

# Penang Statistics

## Quarter 2, 2008



Submitted to the Penang State Government  
by  
Socio-Economic & Environmental Research Institute  
10 Brown Road, 10350 Penang  
Tel: (04) 228 3306 Fax: 226 7042  
E-mail: [seripg@tm.net.my](mailto:seripg@tm.net.my)  
Website: <http://www.seri.com.my>

## CONTENTS

<b>PHYSICAL ATTRIBUTES</b>	
Area and Location	3
<b>DEMOGRAPHY</b>	
Penang: Estimated Population (in '000) and Distribution by Districts	3
Penang: Estimated Population by Sex (in '000)	3
Penang: Estimated Population by Ethnic Group (in '000)	4
<b>ECONOMIC</b>	
Penang: Growth Rate of Gross Regional Product (In 1987 – Constant Prices), 2001-2005	5
<b>EMPLOYMENT</b>	
Penang: Percentage of Employed Persons by Industry (%), 2005 – 2007 (Q4)	5
<b>PRIMARY SECTOR</b>	
<b>AGRICULTURE</b>	
Penang: Agriculture Land use by Crops (In Hectares), 2001-2006	6
<b>LIVESTOCK</b>	
Penang: Livestock Production, 2002– 2007	6
Penang: Production and Value of Livestock, 2006 – 2007	7
<b>FISHERIES</b>	
Penang: Landing Types, Jan – June 2008	7
<b>SECONDARY SECTOR</b>	
<b>MANUFACTURING</b>	
Penang: Approved Manufacturing Projects by Locations, Jan – Mar 2008	8
Penang: Approved Manufacturing Projects By Industry, Jan – Mar 2008	9
Approved Manufacturing Projects By State, Jan – June, 2008	10
<b>TERTIARY SECTOR</b>	
<b>UTILITIES</b>	
<b>WATER</b>	
Penang: Water Output And Consumption ('000) cubic metres, 2000 – 2008 ( Jan-June)	10
Penang: Daily Water Supply, 2007– 2008 (Jan-June)	11
<b>ELECTRICITY</b>	
Penang: Power Demand & Supply, 2007 – 2008	12
<b>TELECOMMUNICATIONS</b>	
Direct Exchange Line (DEL) Penetration Rate by State, 2007 (Q1-Q4)	12
Internet Dial-Up Penetration Rate by State, 2006 & 2007 (Q4)	13
Broadband Penetration Rate by State, 2007 (Q4)	14
Number of Hotspot Locations by State, 2006-2007 (Q4)	15
<b>TRANSPORT</b>	
<b>ROAD TRANSPORT</b>	
New Motor Vehicle Registration, 2008	16
Motor Vehicle Re-registration, 2008	16
<b>TRADE</b>	
<b>TRADE BALANCE</b>	
Export, Import & Balance of Trade, 2007(Oct-Dec) and 2008 (Jan-June) (RM million)	17
<b>LOGISTIC</b>	
<b>AIRPORT</b>	
Aircraft Movement, Jan-June 2008 (Arrival & Departure)	18

Number of Passengers (Domestic & International), Jan-June 2008	18
Cargo Handled (Domestic & International), Jan-June 2008	19
<b>PORT</b>	
Annual Number of Shipcalls, Jan-June 2008	19
Gross Registered Tonnage (Domestic & Foreign), Jan-June 2008	19
Type of Cargo Handled, Jan-June 2008	20
<b>TOURISM</b>	
Penang: Average Occupancy Rate and Estimated Total Visitor Arrivals, 2005-2007	20
<b>PROPERTY</b>	
Penang: House Price Index, 1999 – 2007	20
Penang: Number of Transactions by Price Range for the Principal Property Sub-Sectors, 2007 & 2007	21
Penang: Value of Transactions by Price Range for the Principal Property Sub-Sectors, 2006 & 2007 (in RM million)	22
<b>EDUCATION</b>	
Penang: Number of Schools, Students & Teachers At The Pre-School Level, Jan-Mar 2008	23
Penang: Number of Schools, Students & Teachers At The Primary Level, Jan-Mar 2008	23
Penang: Number of Schools, Students & Teachers At The Secondary Level, Jan-Mar 2008	23
Penang: Number of Students Taking Public Exams and Passing Rates, 2006 – 2007	23
<b>HEALTH</b>	
Penang: Life Expectancy at Birth, 2006-2007	24
Penang: Health Man Power, 2006-2007	24
10 Principal Causes Of Deaths In Penang Government Hospitals, 2006-2007	24
Penang: Number of Beds, Bed Occupancy Rate (BOR) & Average Length of Stay (ALOS) for Government Hospitals, 2006-2007	25
<b>SELECTED NATIONAL STATISTICS</b>	
Malaysia: Gross Domestic Product by Sector	25
Malaysia: Currency Exchange Rates	25
Malaysia: National Indices & Employment Data	26
Malaysia: Federal Government Accounts	26
Malaysia: Producer Price Index	27
Malaysia: Consumer Price Index	28
Malaysia: Index of Industrial Production	28

**Disclaimer :**

*All data are correct at the time of publication and are subject to adjustments and revision by the respective sources. The Socio-economic & Environmental Research Institute (SERI) will not be responsible for any loss or damage caused by the usage of any information obtained from this publication.*

## PHYSICAL ATTRIBUTES

<b>Area:</b>		
	<b>State of Penang</b>	<b>1,030 sq km</b>
	Timur Laut	119 sq km
	Barat Daya	173 sq km
	Seberang Perai Utara	262 sq km
	Seberang Perai Tengah	235 sq km
	Seberang Perai Selatan	241 sq km
<b>Location:</b>		
	Latitudes	5°8' - 5°35'
	Longitudes	100°8' - 100°32'

## DEMOGRAPHY

### Penang: Estimated Population (in '000) and Distribution by Districts

District	2005	2006	2007	2008
	(estimate)	(estimate)	(estimate)	(estimate)
Timur Laut	483.0	486.6	494.0	502.3
Barat Daya	195.5	201.5	205.9	210.5
Seberang Perai Utara	288.0	292.8	297.2	302.0
Seberang Perai Tengah	356.0	362.4	369.4	376.9
Seberang Perai Selatan	146.3	149.1	152.0	155.2
<b>State of Penang</b>	<b>1,468.8</b>	<b>1,492.4</b>	<b>1,518.5</b>	<b>1,546.8</b>

Source: Department of Statistics, Malaysia

Note: Slight discrepancies may occur due to rounding.

### Penang: Estimated Population by Sex (in '000)

Gender	2005	2006	2007	2008
	(estimate)	(estimate)	(estimate)	(estimate)
Male	727.3	738.2	750.4	763.6
Female	741.5	754.2	768.1	783.2
<b>Total</b>	<b>1,468.8</b>	<b>1,492.4</b>	<b>1,518.5</b>	<b>1,546.8</b>

Source: Department of Statistics, Malaysia

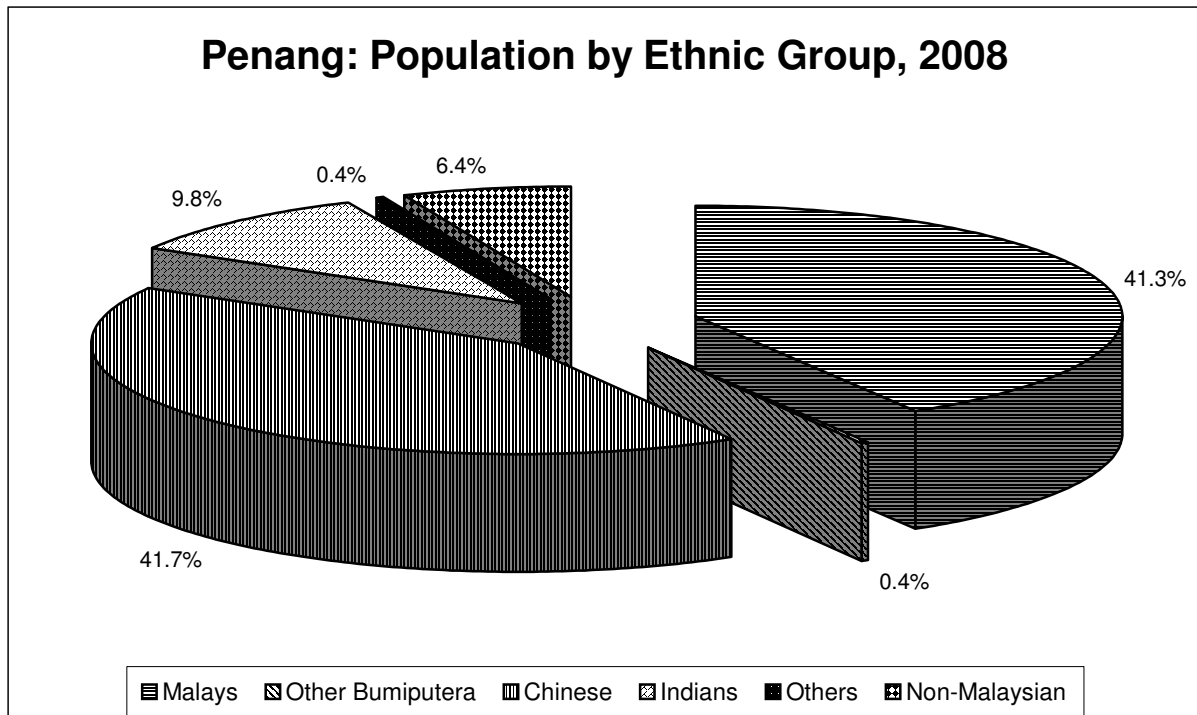
Note: Slight discrepancies may occur due to rounding.

**Penang: Estimated Population by Ethnic Group (in '000)**

Ethnic Group	2005	2006	2007	2008
	(estimate)	(estimate)	(estimate)	(estimate)
Malaysian:	1390.6	1,407.4	1,426.6	1448.2
Malays	600.3	612.3	625.3	639.3
Other Bumiputera	5.3	5.6	6.0	6.2
Chinese	631.8	635.3	639.8	645.3
Indians	147.1	148.0	149.3	151.0
Others	6.1	6.2	6.2	6.4
Non-Malaysian Citizens	78.2	85.0	91.8	98.6
<b>Total</b>	<b>1,468.8</b>	<b>1,492.4</b>	<b>1,518.5</b>	<b>1546.8</b>

Source: Department of Statistics, Malaysia

Note: Slight discrepancies may occur due to rounding.



Source: Department Of Statistics, Penang

## ECONOMIC

### Penang: Growth Rate (%) of Gross Regional Product (In 1987–Constant Prices)

	2001	2002	2003	2004	2005
Agriculture, forestry, fishing	2.1	4.9	4.7	5.7	4.5
Mining & Quarrying	0.3	0.2	-3.0	-6.8	-0.5
Manufacturing	-4.2	6.1	7.2	9.7	6.5
Construction	-1.4	-4.0	2.6	-10.7	-1.1
Tertiary	2.3	5.7	4.4	7.5	7.3
<b>Total</b>	<b>-0.6</b>	<b>5.6</b>	<b>5.4</b>	<b>7.9</b>	<b>6.7</b>

Source: SERI

Note: Please note that SERI has revised the previous GRP growth estimates. The release of the State GRP figures in the 9<sup>th</sup> Malaysia Plan (9MP) as compiled by the Economic Planning Unit (EPU) provides SERI with a point of reference for its GRP projections for the State. SERI's estimates of GRP are compiled and projected based on data available at the State level. To a large extent, it is dependent upon the cooperation of both public and private sectors in voluntary and timely disclosure and reporting of data. However, due to the insufficiency of state level data, SERI has discontinued the estimation of state level's GRP since 2006 and onward.

## EMPLOYMENT

### Penang: Percentage of Employed Persons by Industry (%), 2005 – 2007 (Q4)

Industry	2005	2006	2007 (Q1)	2007 (Q2)	2007 (Q3)	2007 (Q4)
Agriculture, hunting and forestry	1.9	1.6	2.3	1.3	0.8	1.7
Fishing	0.7	0.7	1.0	1.3	1.1	0.6
Mining and quarrying	0.1	0.1	0.0	0.2	0.1	0.1
Manufacturing	36.2	35.3	33.9	33.8	35.6	36.0
Electricity, gas and water supply	0.6	0.9	0.3	0.8	0.6	0.5
Construction	6.8	5.9	6.3	7.1	7.7	7.0
Wholesale and retail trade; repair of motor vehicles, motorcycles and personal and household goods	15.2	16.9	15.9	15.9	15.5	14.6
Hotels and restaurants	7.7	8.9	8.7	9.5	8.5	8.4
Transport, storage and communication	5.7	5.4	4.9	5.1	5.5	5.8
Financial intermediation	2.2	2.1	2.5	2.5	2.1	2.2
Real estate, renting and business activities	3.8	5.7	6.7	4.3	5.6	4.4
Public administration and defense; compulsory social security	5.5	4.1	5.2	4.5	4.5	4.8
Education	5.2	4.7	4.4	5.0	5.5	4.6
Health and social work	2.9	2.5	2.9	2.4	3.0	3.5
Other community, social and personal service	2.7	2.5	2.9	2.6	1.3	3.0
Private households with employed persons	2.9	2.6	2.0	3.7	2.6	2.8
Extra-territorial organisations and bodies	0.0	0.0	0.0	0.0	0.0	0.0
<b>Total</b>	<b>100</b>	<b>100</b>	<b>100</b>	<b>100</b>	<b>100</b>	<b>100</b>

Source: Labour Force Survey, Department of Statistics, Malaysia

Note: Slight discrepancies may occur due to rounding.

# PRIMARY SECTOR

## AGRICULTURE

### Penang: Agriculture Land use by Crops (hectares), 2001-2006

Type	Year					
	2001	2002	2003	2004	2005	2006
Paddy	13,448	13,448	13,448	12,782	12,782	12,782
Fruits	6,830	6,760	6,802	6,872	6,668	6,812
Rubber	12,758	12,758	12,758	11,765	11,177	11,177
Oil Palm	14,821	13,725	14,329	13,868	14,074	13,962
Vegetables	458	423	404	460	481	1,915
Coconut	2,339	2,309	2,313	2,176	2,119	2,195
Cocoa	104	75	75	61	58	10
Cash Crops	247	190	242	309	235	269
Spices	190	196	148	163	169	167
Nutmeg	75	70	38	-	-	-
Others	74	55	21	58	56	50
<b>Total</b>	<b>51,344</b>	<b>50,009</b>	<b>50,578</b>	<b>50,578</b>	<b>47,819</b>	<b>49,339</b>

Source: Derived from the data of the Jabatan Pertanian Negeri Pulau Pinang, Malaysian Palm Oil Berhad (MPOB) and Rubber Industry Smallholders Development Authority (RISDA)

Note: Slight discrepancies may occur due to rounding.

## LIVESTOCK

### Penang: Livestock Production, 2002-2007

Type	Year					
	2002	2003	2004	2005	2006	2007
Meat ( '000 Metric Tonnes)						
Cattle & Buffalo	1.01	0.99	0.91	0.78	0.97	0.97
Goat & Sheep	0.03	0.03	0.02	0.02	0.01	0.01
Chicken & Duck	50.7	73.86	50	66.72	65.99	66.88
Pig	20.34	19.89	18.18	16.97	15.94	16.56
<b>Total</b>	<b>72.08</b>	<b>94.77</b>	<b>69.11</b>	<b>84.49</b>	<b>82.91</b>	<b>82.91</b>

Source: Department of Veterinary Services, Penang

### Penang: Production and Value of Livestock, 2006 – 2007

Commodity	2006			2007		
	Production (Metric Tonnes)	Value (RM Million)	%	Production (Metric Tonnes)	Value (RM Million)	%
<b>Meat</b>						
Cow	929.88	11.07	2.14	925.49	11.01	2.09
Buffalo	43.54	0.52	0.1	53.55	0.64	0.12
Goat/Lamb	8.43	0.1	0.02	8.57	0.10	0.02
Pig	15,935.49	106.11	20.52	16,558.81	110.27	20.89
Chicken	63,540.70	292.29	56.52	64,440.38	296.43	56.16
Duck	2,447.44	11.87	2.3	2,443.61	11.85	2.25
Quail	10.3	0.09	0.02	84.00	0.73	0.14
Rabbit	0.17	0	0	0.17	0	0
<b>Eggs</b>						
Chicken	379,671,940	87.32	16.89	386,029,970	88.79	16.82
Duck	14,840,000	7.42	1.43	14,840,000	7.42	1.41
Quail	0	0	0	2,000,000	0.24	0.05
<b>Milk</b>						
Fresh milk	455,440	0.34	0.07	455,440	0.34	0.06
	<b>Total</b>	<b>517.13</b>	<b>100</b>	<b>Total</b>	<b>527.48</b>	<b>100.00</b>

Source: Livestock Survey 2005 & 2006, Department of Veterinary Services, Penang

## FISHERIES

### Penang: Landing Types, Jan – June, 2008

	Fish		Prawns		Trash Fish (ikan baja)		Cockles	
	Metric Tonnes	RM (million)	Metric Tonnes	RM (million)	Metric Tonnes	RM (million)	Metric Tonnes	RM (million)
Jan	1,211.00	8.20	317.06	7.09	938.86	0.46	400.30	0.48
Feb	1,363.18	9.57	356.22	6.79	1,095.89	0.61	1,349.08	1.61
Mar	1,288.18	8.69	327.84	5.97	1,119.12	0.55	1,220.63	1.46
Apr	1,715.07	11.17	317.56	5.68	1,160.32	0.77	906.17	1.09
May	1,695.16	10.48	294.41	5.85	1,218.39	0.84	742.62	0.89
June	2,333.15	12.32	289.26	5.66	1,209.97	0.86	761.27	0.91

Source: Department of Fisheries, Penang



## SECONDARY SECTOR MANUFACTURING

### Penang: Approved Manufacturing Projects by Locations, Jan-Mac, 2008

Location	TOTAL				
	Number	Employment	Domestic Investment (RM)	Foreign Investment (RM)	Total Capital Investment (RM)
Prai IE	3	1,485	2,960,001,000	107,929,732	3,067,930,732
Prai FTZ	3	221	2,341,906	2,001,480	4,343,386
Butterworth	3	107	9,686,139	0	9,686,139
Bayan Lepas I IE	1	16	0	55,000,000	55,000,000
Bayan Lepas Ph I FTZ	1	14	200	1,999,800	2,000,000
Bayan Lepas Ph III FTZ	2	104	3,356,667	176,667	3,533,334
Other Areas	4	198	8,681,791	12,117,895	20,799,686
Bayan Lepas Ph IV FTZ	3	123	10,944,700	6,390,300	17,335,000
Bukit Minyak S.Prai Tengah	2	138	50,439,000	0	50,439,000
Permatang Pauh	1	2,063	1,138,000,000	.	1,138,000,000
Seberang Jaya	2	354	0	183,915,000	183,915,000
Seberang Prai	4	421	50,751,374	92,469,627	143,221,001
<b>TOTAL</b>	<b>29</b>	<b>5,244</b>	<b>4,234,202,777</b>	<b>462,000,501</b>	<b>4,696,203,278</b>

Source: Malaysian Industrial Development Authority (MIDA) Penang

Note: Slight discrepancies may occur due to rounding. Data is subject to adjustments and revisions by MIDA.

**Penang: Approved Manufacturing Projects by Industry, Jan – Mar, 2008**

Industry	TOTAL				
	Number	Employment	Domestic Investment (RM)	Foreign Investment (RM)	Total Capital Investment (RM)
Basic Metal Products	3	1,198	2,994,878,902	350,900	2,995,229,802
Transport Equipment	2	2,121	1,141,572,337	0	1,141,572,337
Electronics & Electrical Products	10	713	4,356,867	244,901,870	249,258,737
Chemical & Chemical Products	3	486	50,439,000	106,326,930	156,765,930
Machinery Manufacturing	1	179	0	92,118,727	92,118,727
Scientific & Measuring Equipment	2	129	6,107,500	16,622,594	22,730,094
Food Manufacturing	1	97	20,012,274	0	20,012,274
Paper, Printing & Publishing	1	81	7,979,491	0	7,979,491
Fabricated Metal Products	4	105	6,674,500	282,800	6,957,300
Furniture & Fixtures	2	135	2,181,906	1,396,680	3,578,586
<b>TOTAL</b>	<b>29</b>	<b>5,244</b>	<b>4,234,202,777</b>	<b>462,000,501</b>	<b>4,696,203,278</b>

Source: Malaysian Industrial Development Authority (MIDA) Penang

Note: Slight discrepancies may occur due to rounding. Data is subject to adjustments and revisions by MIDA.

**Approved Manufacturing Projects By State, Jan-June, 2008**

State	No.	Domestic Investment (RM)	Foreign Investment (RM)	Total Proposed Capital Investment (RM)
Sarawak	18	522,623,612	12,545,269,962	13,067,893,574
Selangor D.E.	129	917,251,563	4,966,295,063	5,883,546,626
Pulau Pinang	71	4,573,812,601	947,577,383	5,521,389,984
Kedah D.A.	24	148,893,400	2,141,767,465	2,290,660,865
Johor D.T.	72	772,885,301	1,371,790,614	2,144,675,915
Perak D.R.	22	262,742,077	684,086,775	946,828,852
Negeri Sembilan D.K.	13	686,389,853	76,543,777	762,933,630
Sabah	22	386,100,231	244,070,185	630,170,416
Terengganu D.I.	5	473,500,000	50,108,259	523,608,259
Pahang D.M.	13	376,110,130	50,575,070	426,685,200
W.P. - Kuala Lumpur	9	90,018,240	23,438,350	113,456,590
Melaka	16	56,570,030	52,176,199	108,746,229
Perlis I.K.	1	0	91,250,000	91,250,000
Kelantan D.N.	1	0	16,000,000	16,000,000
W.P.- Labuan	1	9,795,046	445,462	10,240,508
<b>TOTAL</b>	<b>417</b>	<b>9,276,692,084</b>	<b>23,261,394,564</b>	<b>32,538,086,648</b>

Source: Malaysian Industrial Development Authority (MIDA) Penang

Note: Slight discrepancies may occur due to rounding. Data is subject to adjustments and revisions by MIDA.

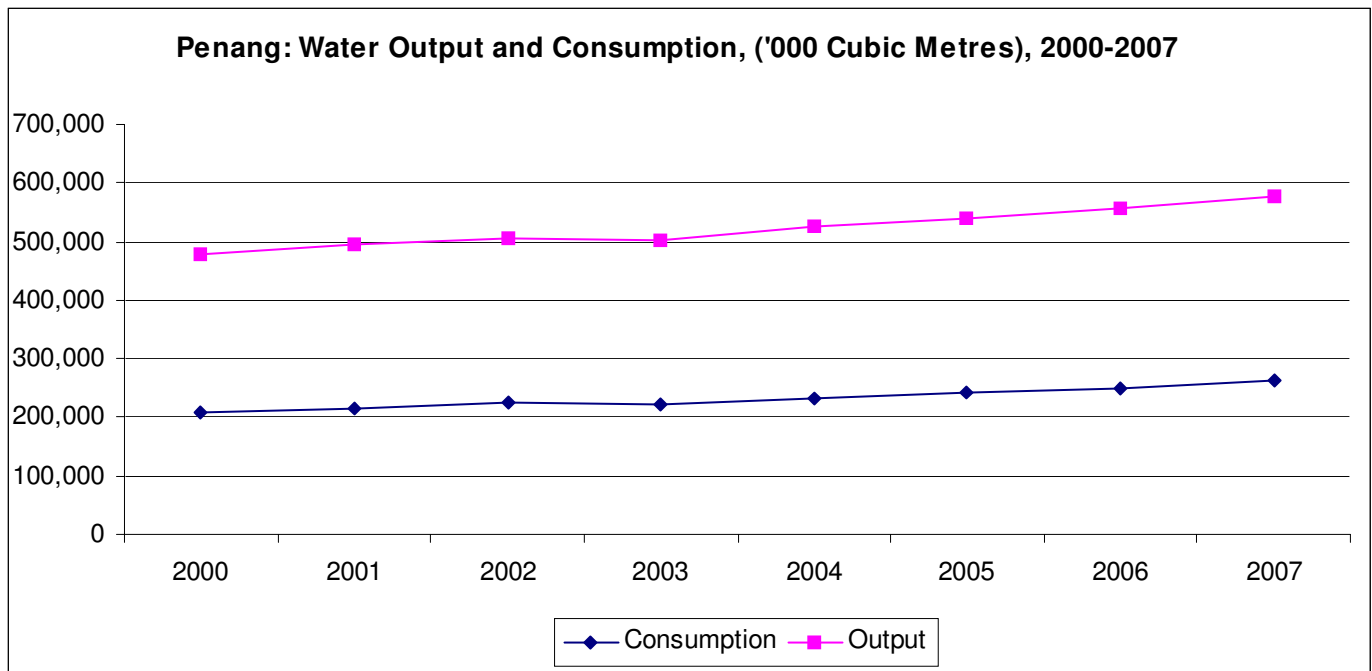
## TERTIARY SECTOR UTILITIES

### WATER

#### Penang: Water Output And Consumption ('000 cubic Metres), 2000–2008 (Jan-June)

Year	Output	% Increase	Consumption	% Increase
2000	271,258	5.4%	208,183	6.3%
2001	278,395	2.6%	216,380	3.9%
2002	280,161	0.6%	224,632	3.8%
2003	277,066	-1.1%	223,390	-0.6%
2004	292,858	5.7%	233,057	4.3%
2005	298,985	2.1%	240,999	3.4%
2006	306,578	2.5%	249,439	3.5%
2007	315,717	5.6%	262,476	8.9%
<b>2008 (Jan-June)</b>	<b>163,874</b>	<b>5.4%</b>	<b>138,705</b>	<b>6.4%</b>

Source: Derived from data provided by Perbadanan Bekalan Air Pulau Pinang Sdn Bhd (PBA)



### Penang: Daily Water Supply, 2007 – 2008 (Jan-June)

	2007			2008 (Jan-June)		
	Penang Island	Seberang Perai	Penang State	Penang Island	Seberang Perai	Penang State
No. of Treatment Plants	5	4	9	6	4	10
Max. Capacity of Treatment Plants (cu.m/day)	316,182	956,818	1,273,000	316,389	956,818	1,273,207
Average Daily Production (cu.m)	396,953	468,024	864,977	411,669	488,738	900,407
Average Daily Consumption (cu.m)	342,265	376,847	719,112	369,388	392,727	762,115
No. of Services (consumers)	227,154	234,173	461,327	231,796	237,603	469,399
Daily Consumption (cu.m)						
Per Consumer	1.51	1.61	1.56	1.59	1.65	1.62
Per Industrial Consumer	5.79	4.76	5.28	6.46	4.85	5.66
Per Domestic Consumer	0.96	1.09	1.04	1.00	1.15	1.08

Source: Derived from data provided by Perbadanan Bekalan Air Pulau Pinang Sdn Bhd(PBA)

## ELECTRICITY

### Penang: Power Demand & Supply, 2000 - 2008

Year	Maximum Demand (MW)	Installed Capacity (MW)	Excess Capacity %
2000	950	2,518	62%
2001	1,012	2,828	64%
2002	1,049	2,666	61%
2003	1,085	2,788	61%
2004	1,108	2,795	60%
2005	1,121	2,957	62%
2006	1,202	3,254	63%
2007	1,284	3,294	61%
2008	1,361	3,294	59%

Note: Excluding demand of 132kV customers supplied via direct 132kV connection

Source: Tenaga Nasional Berhad, Penang

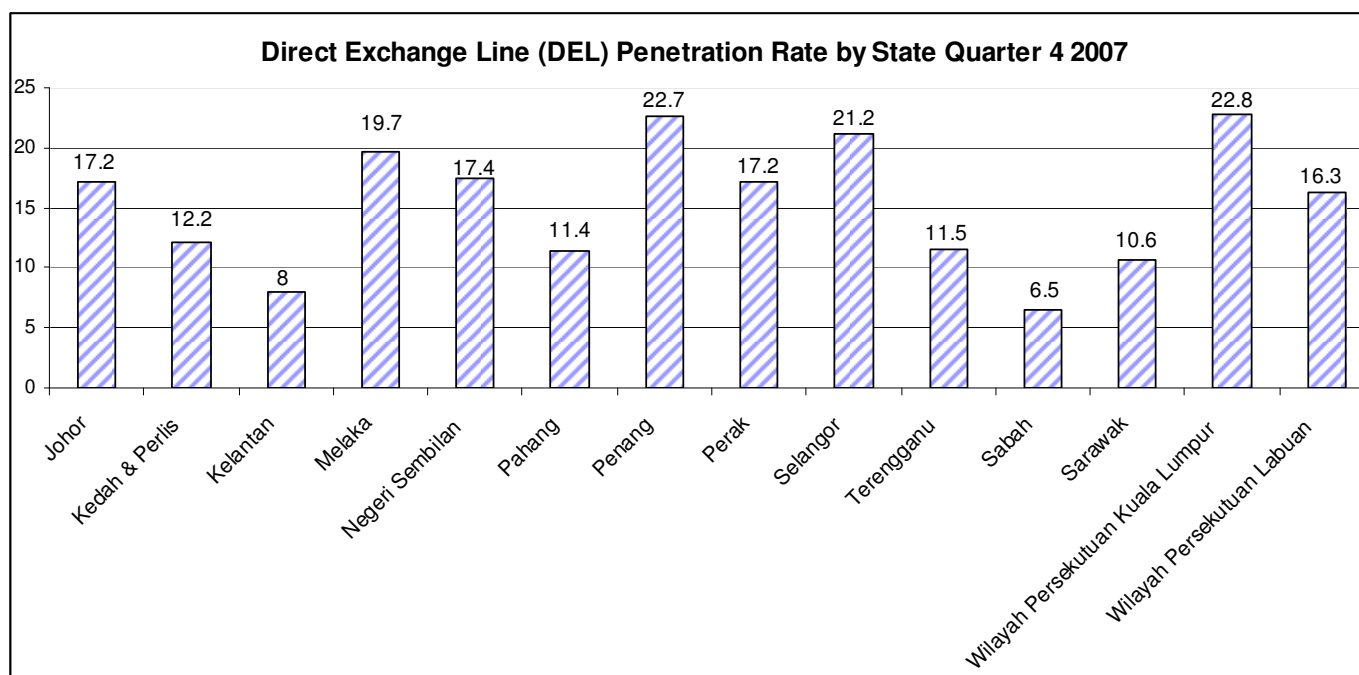
## TELECOMMUNICATIONS

### Direct Exchange Line (DEL) Penetration Rate by State, 2007 (Q1-Q4)

State	2007 (Q1)	2007 (Q2)	2007 (Q3)	2007 (Q4)
Johor	17.5	17.4	17.3	17.2
Kedah & Perlis	12.8	12.4	12.3	12.2
Kelantan	8.2	8.2	8.1	8.0
Melaka	19.9	19.9	19.8	19.7
Negeri Sembilan	17.7	17.7	17.6	17.4
Pahang	11.9	11.6	11.5	11.4
<b>Penang</b>	<b>23.1</b>	<b>23.0</b>	<b>22.9</b>	<b>22.7</b>
Perak	17.6	17.5	17.4	17.2
Selangor	21.4	21.3	21.3	21.2
Terengganu	11.9	11.8	11.7	11.5
Sabah	23.0	6.5	6.5	6.5
Sarawak	16.3	10.8	10.7	10.6
Wilayah Persekutuan Kuala Lumpur	6.5	22.9	22.8	22.8
Wilayah Persekutuan Labuan	10.8	16.3	16.3	16.3

Note: Direct Exchange Line (DEL) connects a customer's equipment to the Public Switched telephone Network (PSTN) and has a dedicated port on a telephone exchange. The penetration rate refers to the total DELs to residential as well business.

Source: Malaysian Communications and Multimedia Commission (MCMC)

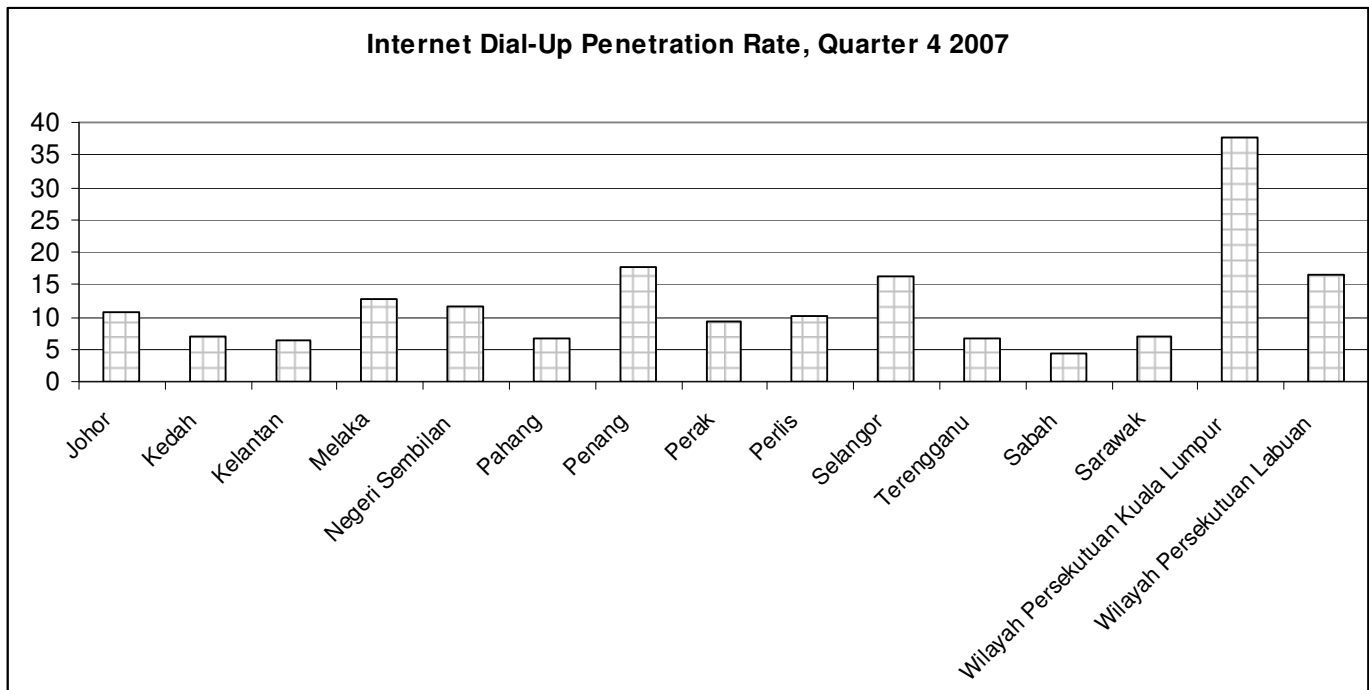


Source: Malaysian Communications and Multimedia Commission (MCMC)

### Internet Dial-Up Penetration Rate by State, 2006 & 2007 (Q4)

State	2006	2007 (Q4)
Johor	10.6	10.8
Kedah	7.0	7.1
Kelantan	6.4	6.4
Melaka	12.5	12.7
Negeri Sembilan	11.5	11.6
Pahang	6.5	6.7
<b>Penang</b>	<b>17.3</b>	<b>17.8</b>
Perak	9.1	9.3
Perlis	10.3	10.1
Selangor	15.4	16.1
Terengganu	6.6	6.7
Sabah	4.3	4.3
Sarawak	6.8	7.0
Wilayah Persekutuan Kuala Lumpur	36.2	37.8
Wilayah Persekutuan Labuan	16.7	16.6

Source: Malaysian Communications and Multimedia Commission (MCMC), PIKOM



Source: Malaysian Communications and Multimedia Commission (MCMC), PIKOM

### Broadband Penetration Rate by State, 2007 (Q4)

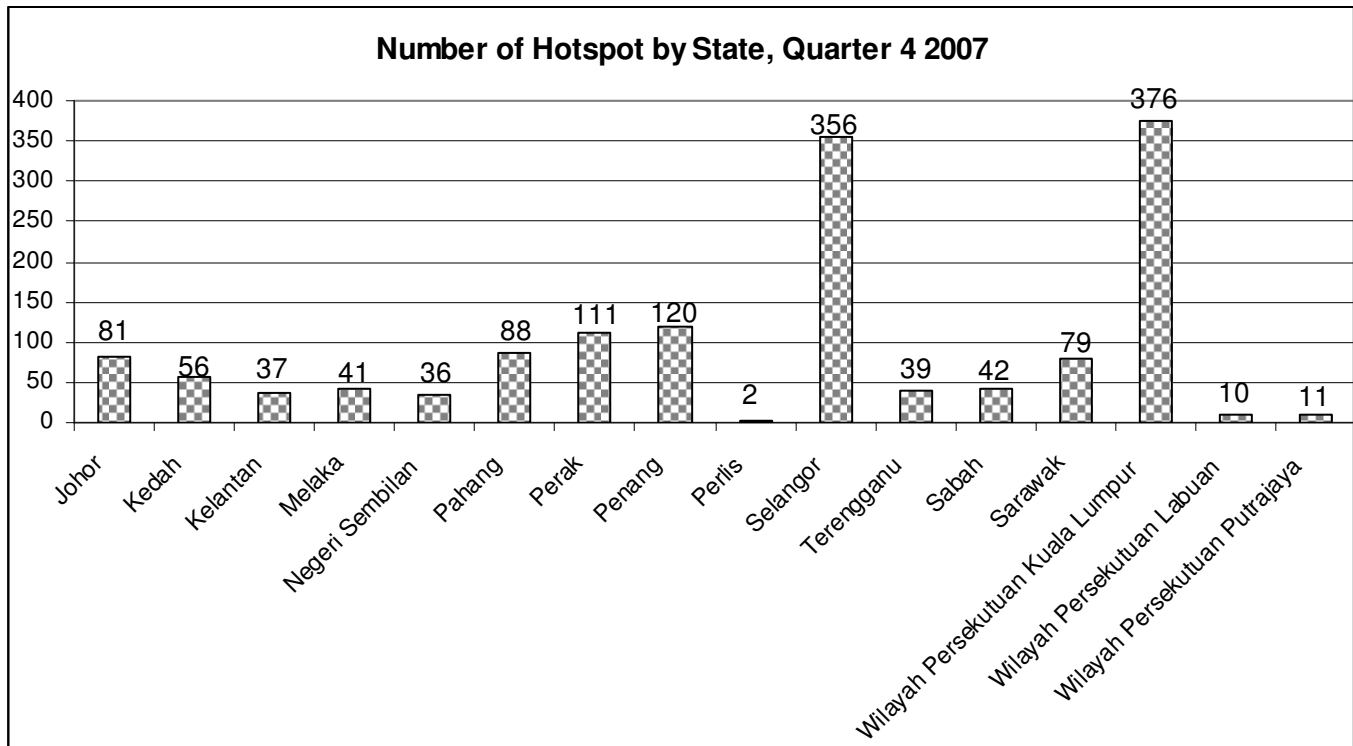
State	Broadband Penetration Rate per 100 Households by State, 2007 (Q4)
Johor	3.5
Kedah	1.9
Kelantan	1.0
<b>Penang</b>	<b>6.8</b>
Negeri Sembilan	2.9
Pahang	1.7
Melaka	3.9
Perak	2.7
Perlis	1.6
Selangor	6.1
Terengganu	1.6
Sabah	2.6
Sarawak	2.3
Wilayah Persekutuan Kuala Lumpur	11.8
Wilayah Persekutuan Labuan	3.9

Source: Malaysian Communications and Multimedia Commission (MCMC)

**Number of Hotspot Locations by State, 2006-2007 (Q4)**

State	2006	Quarter 4, 2007
Johor	94	81
Kedah	31	56
Kelantan	30	37
Melaka	34	41
Negeri Sembilan	31	36
Pahang	80	88
Perak	43	111
<b>Penang</b>	<b>94</b>	<b>120</b>
Perlis	-	2
Selangor	352	356
Terengganu	35	39
Sabah	44	42
Sarawak	75	79
Wilayah Persekutuan Kuala Lumpur	395	376
Wilayah Persekutuan Labuan	9	10
Wilayah Persekutuan Putrajaya	11	11

Source: Malaysian Communications and Multimedia Commission (MCMC)



Source: Malaysian Communications and Multimedia Commission (MCMC)



## ROAD TRANSPORT

### New Motor Vehicle Registration, 2008

Month	Region	Motorcycle	Private passenger car	Taxi	Bus	Hire cars	Lorry & van	Others	Total
Jan	Penang	5,565	4,624	5	12	9	262	66	10,543
	Malaysia	54,277	45,279	378	117	168	3,506	2,159	105,884
Feb	Penang	4,627	3,586	5	6	2	260	43	8,529
	Malaysia	42,742	37,306	269	92	180	3,174	1,405	85,168
Mar	Penang	4,468	4,385	5	4	14	252	51	9,179
	Malaysia	44,596	44,997	364	94	266	3,771	1,663	95,752
Apr	Penang	4,810	4,855	11	3	3	315	63	10,060
	Malaysia	45,946	48,784	354	104	105	4,326	1,879	102,498
May	Penang	4,326	4,636	5	11	3	282	74	9,337
	Malaysia	42,046	47,589	300	120	1,052	4,002	1,735	96,844
June	Penang	4,869	4,551	2	13	5	285	70	9,795
	Malaysia	51,188	47,894	317	118	1,136	4,104	1,806	106,563

Source: Derived from the statistics provided by Jabatan Pengangkutan Jalan, Malaysia

### Motor Vehicle Re-registration, 2008

Month	Region	Motorcycle	Private passenger car	Bus	Taxi	Hire cars	Lorry & van	Others	Total
Jan	Penang	985,697	733,428	5,150	3,358	447	54,800	16,943	1,799,823
	Malaysia	7,999,160	7,467,535	62,417	72,653	12,397	874,337	434,752	16,923,251
Feb	Penang	990,043	736,744	5,160	3,365	449	55,026	16,981	1,807,768
	Malaysia	8,040,147	7,503,621	62,497	72,824	12,486	877,063	435,987	17,004,625
Mar	Penang	994,868	741,328	5,168	3,377	461	55,282	17,033	1,817,517
	Malaysia	8,087,522	7,550,964	62,644	73,099	12,645	880,680	437,653	17,105,207
Apr	Penang	999,514	746,208	5,173	3,394	462	55,560	17,093	1,827,404
	Malaysia	8,132,510	7,601,435	62,797	73,327	12,962	884,473	439,322	17,206,826
May	Penang	1,003,650	750,685	5,179	3,404	463	55,809	17,161	1,836,651
	Malaysia	8,173,081	7,648,260	62,949	73,572	13,521	887,868	440,867	17,300,118
June	Penang	1,009,263	755,651	5,197	3,402	465	56,123	17,240	1,847,341
	Malaysia	8,230,319	7,700,380	63,122	73,755	14,572	891,996	442,749	17,416,893

Source: Derived from the statistics provided by Jabatan Pengangkutan Jalan, Malaysia

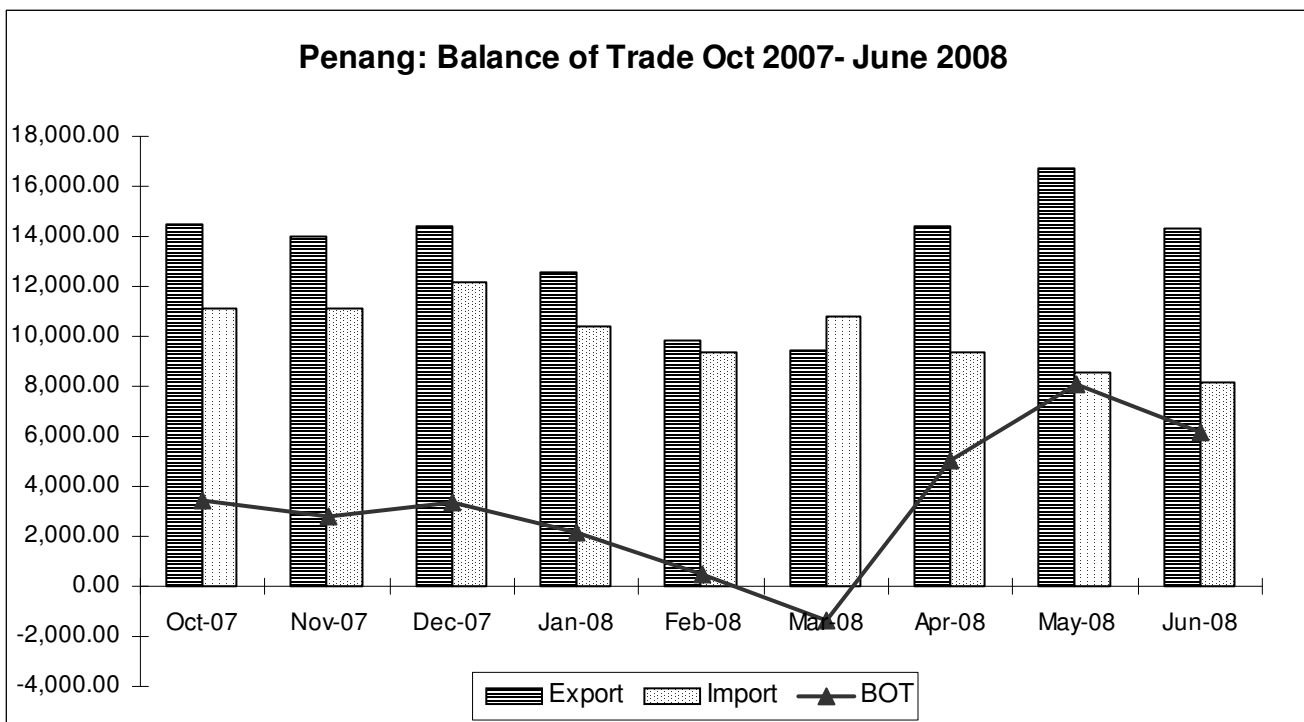
# TRADE

## TRADE BALANCE

**Export, Import and Balance of Trade, 2007 (Oct-Dec) and 2008 (Jan-June)  
(RM million)**

2007	MALAYSIA			PENANG		
	Export	Import	BOT	Export	Import	BOT
Oct	54,872.66	46,279.39	8,593.27	14,510.84	11,134.26	3,426.95
Nov	54,457.71	44,063.28	10,394.43	13,969.27	11,083.41	2,835.02
Dec	54,161.36	44,750.11	9,411.25	14,406.16	12,181.23	3,322.75
<b>TOTAL</b>	<b>605,153.24</b>	<b>504,813.80</b>	<b>100,339.44</b>	<b>164,201.30</b>	<b>117,992.06</b>	<b>35,376.38</b>
2008	MALAYSIA			PENANG		
	Export	Import	BOT	Export	Import	BOT
Jan	53,038.77	43,316.93	9,721.84	12,542.08	10,411.38	2,130.70
Feb	47,076.67	37,972.19	9,104.48	9,875.95	9,361.99	513.95
Mar	51,682.59	43,682.92	7,999.37	9,418.87	10,766.44	(1,347.57)
Apr	55,791.37	43,477.40	12,313.98	14,408.46	9,374.82	5,033.64
May	61,073.91	45,597.99	15,475.92	16,700.40	8,596.83	8,103.57
June	58,303.87	45,449.97	12,853.90	14,313.64	8,175.26	6,138.37
<b>TOTAL</b>	<b>326,966.89</b>	<b>259,497.41</b>	<b>67,469.49</b>	<b>77,259.40</b>	<b>56,686.73</b>	<b>26,571.67</b>

Source: Department of Statistics, Malaysia



Source: Derived from data provided by Department of Statistics, Malaysia

## LOGISTICS

### PENANG AIRPORT

#### Aircraft Movement per annum, Jan-June 2008 (Arrival)

Month	No. of Movement
Jan	1,581
Feb	1,503
Mar	1,627
Apr	1,663
May	1,731
June	1,658
<b>2008 (Jan-June)</b>	<b>9,763</b>

Source: Derived from series of Airport Statistics, Malaysia Airports Berhad

#### Aircraft Movement per annum, Jan – June 2008 (Departure)

Month	No. of Movement
Jan	1,587
Feb	1,511
Mar	1,629
Apr	1,657
May	1,735
June	1,662
<b>2008 (Jan-June)</b>	<b>9,781</b>

Source: Derived from series of Airport Statistics, Malaysia Airports Berhad

#### Number of Passengers (Domestic & International) Jan-June 08

Month	No. of Passengers		
	Domestic	International	Total
Jan	146,092	113,623	259,715
Feb	155,285	132,045	287,330
Mar	162,998	140,089	303,087
Apr	148,034	123,363	271,397
May	153,029	129,096	282,125
June	155,543	123,230	278,773
<b>2008(Jan-June)</b>	<b>920,981</b>	<b>761,716</b>	<b>1,682,697</b>

Source: Derived from series of Airport Statistics, Malaysia Airports Berhad

**Cargo Handled (Domestic & International) Jan-June 2008**

Month	Cargo Handled (in kgs)		
	Domestic	International	Total
Jan	2,200,579	15,378,294	17,578,873
Feb	1,642,657	13,554,597	15,197,253
Mar	2,008,208	15,863,593	17,871,801
Apr	2,064,119	14,937,904	17,002,023
May	2,088,099	14,445,209	16,533,308
June	3,199,166	12,312,264	15,511,429
<b>2008(Jan-Mar)</b>	<b>13,202,828</b>	<b>86,491,176</b>	<b>99,694,004</b>

Source: Derived from series of Airport Statistics, Malaysia Airports Berhad.

**PENANG PORT****Annual Number of Ship calls, Jan-June 2008**

Month	Domestic	Foreign	Total
Jan	245	211	456
Feb	334	210	544
Mar	241	236	477
Apr	298	218	516
May	242	172	414
June	301	226	527
<b>Total</b>	<b>1,661</b>	<b>1,273</b>	<b>2,934</b>

Source: Derived from the statistics provided by Penang Port Sdn Bhd

**Gross Registered Tonnage (Domestic & Foreign), Jan-June 2008**

2008	Domestic	Foreign	Total
Jan	1,878,902	1,454,545	3,333,447
Feb	1,705,066	1,335,862	3,040,928
Mar	1,490,525	1,345,034	2,835,559
Apr	2,004,056	1,500,387	3,504,443
May	1,363,026	1,250,249	2,613,275
June	1,703,001	1,540,999	3,244,000
<b>Total</b>	<b>10,144,576</b>	<b>8,427,076</b>	<b>18,571,652</b>

Source: Derived from the statistics provided by Penang Port Sdn Bhd

**Type of Cargo Handled, Jan-June 2008**

Year	General Cargo	(million freight tonnes)			Total	Container
		Dry Bulk	Liquid Bulk	Containerised		(TEUs)
Jan	143,448	227,613	279,287	1,337,774	1,988,122	73,791
Feb	106,206	226,033	286,599	1,198,355	1,817,193	69,012
Mar	174,742	240,599	342,033	1,412,170	2,169,544	83,045
Apr	94,152	229,405	397,573	1,582,637	2,303,767	76,653
May	147,068	397,873	309,613	1,460,459	2,315,013	79,277
June	148,546	263,188	468,372	1,787,229	2,667,335	82,655
<b>Total</b>	<b>814,162</b>	<b>1,584,711</b>	<b>2,083,477</b>	<b>8,778,624</b>	<b>13,260,974</b>	<b>464,433</b>

Source: Derived from the statistics provided by Penang Port Sdn Bhd

**TOURISM****Penang: Average Occupancy Rate and Estimated Total Visitor Arrivals, 2005 – 2007**

	2005	2006	2007
Average Occupancy Rate	60.2%	67.9%	65.30%
Average Occupancy Rate for Beach Hotels	55.0%	60.6%	57.40%
Average Occupancy for City Hotels	63.4%	71.9%	70.20%
Estimated Total Visitor Arrivals for the State	3.09 mil	3.08 mil	3.44 mil
Estimated Domestic Share	63.0%	62.5%	58.50%
Estimated International Share	37.0%	37.5%	41.50%

Source: SERI

**PROPERTY****Penang: House Price Index, 1999 - 2007**

Year	Indices				
	Terraced	High-Rise	Detached	Semi-Detached	All Houses
Weight (2000=100)	38.1	50.7	2.9	8.4	100.0
<b>1999</b>	99.3	98.7	95.5	93.2	97.8
<b>2000</b>	100.0	100.0	100.0	100.0	100.0
<b>2001</b>	102.9	108.7	85.5	93.2	102.9
<b>2002</b>	115.6	65.1	97.6	96.0	102.6
<b>2003</b>	118.3	124.7	95.3	91.4	115.5
<b>2004</b>	124.1	124.5	94.7	102.3	119.0
<b>2005</b>	129.7	127.8	98.6	108.3	123.6
<b>2006</b>	133.1	131.9	106.3	101.4	125.9
<b>2007</b>	142.1	137.3	99.3	105.7	131.8

Source: : Jabatan Penilaian dan Perkhidmatan Harta

**Penang: Number of Transactions by Price Range for the Principal Property Sub-Sectors, 2006 & 2007**

Price Range (RM)	Year	Residential	Commercial	Industrial	Agricultural	Development	Others	Total
0 - 25,000	2006	540	23	2	271	294	7	1,137
	2007	470	36	2	257	338	0	1,103
25,001 - 50,000	2006	1,095	56	6	187	249	5	1,598
	2007	1,123	40	18	227	238	0	1,646
50,000 - 75,000	2006	2,138	127	10	111	132	2	2,520
	2007	2,017	95	9	121	150	0	2,392
75,001 - 100,000	2006	2,340	108	3	97	123	3	2,674
	2007	1,719	72	5	102	130	0	2,208
100,001 - 150,000	2006	3,341	257	12	112	151	2	3,875
	2007	2,892	254	10	141	143	0	3,440
150,001 - 200,000	2006	2,112	271	33	96	100	2	2,614
	2007	1,972	261	51	82	143	0	2,509
200,001 - 250,000	2006	1,184	271	31	33	60	2	1,581
	2007	1,125	240	54	57	88	0	1,564
250,001 - 500,000	2006	2,001	655	248	99	238	4	3,245
	2007	2,196	715	231	136	258	0	3,536
500,001 - 1,000,000	2006	555	227	100	58	161	2	1,103
	2007	867	306	104	71	208	0	1,556
1,000,001 & Above	2006	133	61	73	26	234	3	530
	2007	243	118	91	41	259	0	752
<b>Total</b>	<b>2006</b>	<b>15,439</b>	<b>2,056</b>	<b>518</b>	<b>1,090</b>	<b>1,742</b>	<b>32</b>	<b>20,877</b>
	<b>2007</b>	<b>14,624</b>	<b>2,137</b>	<b>575</b>	<b>1,235</b>	<b>1,955</b>	<b>0</b>	<b>20,526</b>

Source: Jabatan Penilaian dan Perkhidmatan Harta

**Penang: Value of Transactions by Price Range for the Principal Property Sub-Sectors, 2006 & 2007 (in RM million)**

Price Range (RM)	Year	Residential	Commercial	Industrial	Agricultural	Development	Others	Total
0 - 25,000	2006	11.32	0.40	0.03	3.37	3.98	0.07	19.17
	2007	10.79	0.46	0.02	3.39	4.50	0.00	19.16
25,001 - 50,000	2006	44.68	2.34	0.21	6.99	9.00	0.17	63.40
	2007	46.60	1.57	0.68	8.45	8.85	0.00	66.15
50,000 - 75,000	2006	139.50	8.03	0.64	7.01	8.18	0.13	163.47
	2007	130.72	5.97	0.57	7.71	9.53	0.00	154.49
75,001 - 100,000	2006	205.17	9.72	0.29	8.50	10.87	0.25	234.80
	2007	151.92	6.54	0.43	9.06	11.63	0.00	179.58
100,001 - 150,000	2006	424.75	33.28	1.58	14.26	18.53	0.29	492.70
	2007	368.28	32.71	1.27	17.59	18.40	0.00	438.25
150,001 - 200,000	2006	367.40	48.62	5.96	17.00	17.64	0.35	456.97
	2007	343.93	46.66	9.10	14.50	26.04	0.00	440.24
200,001 - 250,000	2006	268.58	61.66	7.21	7.58	13.69	0.45	359.17
	2007	257.03	55.80	12.52	12.68	20.08	0.00	358.11
250,001 - 500,000	2006	693.52	224.19	86.81	35.35	85.88	1.32	1,127.07
	2007	753.53	253.15	81.48	47.66	95.25	0.00	1,241.06
500,001 - 1,000,000	2006	369.11	150.76	63.49	41.70	115.60	1.45	742.12
	2007	591.58	203.91	66.55	51.03	146.10	0.00	1,059.18
1,000,001 & Above	2006	216.18	257.03	266.74	55.07	1,031.33	4.32	1,830.66
	2007	441.15	664.10	364.44	80.44	1,048.01	0.00	2,598.13
<b>Total</b>	<b>2006</b>	<b>2,740.21</b>	<b>796.04</b>	<b>432.94</b>	<b>196.83</b>	<b>1,314.69</b>	<b>8.81</b>	<b>5,489.54</b>
	<b>2007</b>	<b>3,105.52</b>	<b>1,270.87</b>	<b>537.06</b>	<b>252.51</b>	<b>1,388.39</b>	<b>0.00</b>	<b>6,554.35</b>

Source: Jabatan Penilaian dan Perkhidmatan Harta

## EDUCATION

### Penang: Number of Schools, Students & Teachers at the Pre – School Level, Jan-Mar 2008

Type of School	No. of Schools	No. of Students	No. of Teachers
Awam	140	5,762	246
Swasta	406	22,350	1,218
<b>Total</b>	<b>546</b>	<b>28,112</b>	<b>1,464</b>

*Source: Jabatan Pendidikan Negeri, Pulau Pinang*

### Penang: Number of Schools, Students & Teachers at the Primary Level, Jan-Mar 2008

Type of School	No. of Schools	No. of Students	No. of Teachers
SK	142	95,636	6,349
SJK (C)	90	56,848	3,025
SJK (T)	28	6,785	444
SK Khas	3	138	65
<b>Total</b>	<b>263</b>	<b>159,407</b>	<b>9,883</b>

*Source: Jabatan Pendidikan Negeri, Pulau Pinang*

### Penang: Number of Schools, Students & Teachers at the Secondary Level, Jan-Mar 2008

Type of School	No. of Schools	No. of Students	No. of Teachers
SM ( Asrama Penuh)	1	666	68
SM Khas	1	162	45
SM Vokasional \$ Teknik	6	3,658	447
SM Agama	4	2,605	236
<b>Total</b>	<b>12</b>	<b>7,091</b>	<b>796</b>

*Source: Jabatan Pendidikan Negeri, Pulau Pinang*

### Penang: Number of Students Taking Public Exams and Passing Rates, 2006- 2007

	No. of Students		No. of Passes		Passing Rate (%)	
	2006	2007	2006	2007	2006	2007
UPSR	24,834	25,157	16,770	17,236	67.53	68.51
PMR	20,886	21,327	13,771	14,585	65.93	68.39
SPM	18,269	19,475	15,526	17,299	85.85	88.99
STPM	3,365	3,516	3,183	3,334	96.31	96.05

*Source: Jabatan Pendidikan Negeri, Pulau Pinang*



## HEALTH

### Penang: Life Expectancy at Birth, 2006-2007

	2006	2007
Male	71.8	71.9
Female	76.3	76.4

Source: Penang State Health Department

### Penang: Health Man Power, 2006-2007

Post	2006		2007	
	No. of Post	Post Filled	No. of Post	Post Filled
<b>Total Number of State Health Department Man Power</b>	<b>9,316</b>	<b>8,090</b>	<b>9,873</b>	<b>8,368</b>
<b>Professional</b>				
Medical Officer	966	681	1,126	722
Dental Officer	87	66	95	65
Pharmacist	122	101	201	107
<b>Paramedic</b>				
Assistant Environmental Health Officer	116	103	146	117
Staff Nurse	2,165	2,066	2,415	2,125
Medical Laboratory Assistant	202	193	221	192
Medical Assistant	438	382	479	377
Dental Nurse	158	135	176	135
Dental Technician	34	28	36	32
Community Nurse	697	677	797	706
Assistant Nurse	192	117	171	102

Source: Penang State Health Department

### 10 Principal Causes Of Deaths In Penang Government Hospitals, 2006-2007

Main Causes of Deaths		2006		2007	
		No. of Deaths	%	No. of Deaths	%
1	Diseases of the Circulatory System	707	25.42%	830	29.69%
2	Certain Infectious and Parasitic Diseases	487	17.51%	552	19.74%
3	Diseases of the Respiratory System	367	13.20%	408	14.59%
4	Neoplasm	357	12.84%	397	14.20%
5	Diseases of the Digestive System	156	5.61%	182	6.51%
6	Diseases of the Genitourinary	166	5.97%	171	6.12%
7	Transport Accidents	163	5.86%	130	4.65%
8	Certain Conditions Originating in the Perinatal Period	76	2.73%	56	2.00%
9	Congenital malformations, Deformations and Chromosomal Abnormalities	50	1.80%	37	1.32%
10	Symptoms, signs and Abnormal Clinical and Laboratory, not elsewhere Classified	64	2.30%	33	1.18%
	<b>Total Hospital Deaths</b>	<b>2,781</b>	<b>100.00%</b>	<b>2,796</b>	<b>100.00%</b>

Source: Penang State Health Department

### Penang: Number of Beds, Bed Occupancy Rate (BOR) & Average Length of Stay (ALOS) for Government Hospitals, 2007

Hospital	No. of Bed	B.O.R	A.L.O.S
Hospital Pulau Pinang	1,090	74.54%	5.14
Hospital Seberang Jaya	314	93.09%	3.06
Hospital Bukit Mertajam	242	47.25%	3.30
Hospital Sungai Bakap	105	52.10%	2.94
Hospital Kepala Batas	108	67.31%	3.97
Hospital Balik Pulau	71	66.64%	7.04
<b>Total</b>	<b>1,930</b>	<b>72.22%</b>	<b>4.19</b>

Source: Penang State Health Department

## SELECTED NATIONAL STATISTICS

### Malaysia: Gross Domestic Product by Sector

Component	RM Million				
	Q1/07	Q2/07	Q3/07	Q4/07	Q1/08
National Accounts (GDP) at Current Prices	144,064	153,937	165,724	176,709	174,636
Agriculture, Forestry and Fishing	13,543	14,958	17,108	18,929	19,827
Mining and Quarrying	18,747	22,840	23,117	28,076	27,953
Manufacturing	41,983	43,686	47,380	47,671	47,458
Electricity, Gas and Water	3,879	4,182	4,203	4,124	4,155
Construction	3,893	4,377	4,367	4,581	4,361
Wholesale and Retail Trade, Hotel and Restaurants	18,436	19,486	21,703	23,459	21,725
Transport, storage and Communication	10,176	10,436	10,728	10,956	11,192
Finance, Insurance, real estate and business services	19,683	19,834	20,293	21,134	21,564
Other Services	7,420	7,695	7,836	7,946	7,948
Government Services	9,548	9,835	12,128	12,901	11,816
Less : Imputed bank service charges	4,685	4,829	4,724	4,574	4,976
Plus : import duties	1,444	1,435	1,585	1,507	1,613
National Accounts (GDP) at 2000 price	119,845	123,661	129,548	131,162	128,820
Agriculture, Forestry and Fishing	8,963	9,313	10,077	9,914	9,425
Mining and Quarrying	10,417	10,643	10,688	11,139	10,969
Manufacturing	36,255	37,536	39,624	38,748	38,851
Electricity, Gas and Water	3,636	3,855	3,866	3,816	3,799
Construction	3,511	3,913	3,890	3,918	3,711
Wholesale and Retail Trade, Hotel and Restaurants	16,470	17,298	19,095	20,276	18,585
Transport, storage and Communication	9,128	9,358	9,580	9,725	9,955
Finance, Insurance, real estate and business services	19,170	19,553	20,227	20,607	21,375
Other Services	6,921	7,154	7,251	7,330	7,293
Government Services	8,324	8,574	8,718	9,362	8,565
Less : Imputed bank service charges	4,835	4,865	4,929	5,063	5,208
Plus : import duties	1,344	1,329	1,459	1,389	1,499

Source: Bank Negara Malaysia

Note: Data is subject to adjustments and revisions by Bank Negara Malaysia

### Malaysia: Currency Exchange Rates

Period (RM as at)	USD	GBP	EUR	AUD	JPY100	SGD
30 June 08	3.2665	6.5114	5.1565	3.1401	3.0749	2.3995

Source: Currency Converter, <http://www.bnm.gov.my/index.php>, Bank Negara Malaysia

**Malaysia: National Indices & Employment Data**

	Unit Description	Latest Period	Latest Data	Previous Period
Industrial Production Index	2000=100	May / 08	139.9	137.5
Employment	(million persons)	Q4 / 07	10.666	10.627
Employment	% of labour force	Q4 / 07	97.0	96.9
Unemployment	(million persons)	Q4 / 07	0.333	0.341
Unemployment	% of labour force	Q4 / 07	3.0	3.1
Average salaries and wages per employee in manufacturing sector	RM per month	May / 08	1,882.4	1,887.1
Consumer Price Index	2005=100	Jun / 08	113.4	109.1
Producer Price Index	2000=100	Jun / 08	149.5	145.4

*Source: Bank Negara Malaysia*

**Malaysia: Federal Government Accounts**

Component	RM Million	
	2005	2006
Public Sector Operations		
General Government		
Revenue	94,961	101,955
Operating Expenditure	106,633	117,721
NPFE's Operating Surplus	84,973	100,670
Public Sector Current Account	73,301	84,904
Net Development Expenditure	64,451	86,534
Public Sector Overall Balance	8,850	-1,630
Domestic Financing	2,376	9,723
Bank	-8,226	2,235
Non-Bank	10,602	7,488
Foreign Borrowing	-11,226	-8,093

*Source: Bank Negara Malaysia*

**Malaysia: Producer Price Index**

2000=100

Section	Weights	January - December	
		Contribution to PPI growth (%)	
		2006	2007
<b>Domestic Economy</b>	<b>100.00</b>	<b>5.1%</b>	<b>6.7%</b>
Food and live animals	5.27	3.1%	8.5%
Beverages and Tobacco	1.02	5.8%	-0.4%
Crude materials, inedible excepts fuels	4.38	14.5%	14.1%
Mineral fuels, lubricants and related materials	11.86	11.0%	3.0%
Animals and vegetable oils and fats	3.80	-0.3%	46.7%
Chemical and related products n.e.s	5.07	3.4%	3.6%
Manufactured goods, classified chiefly by materials	10.84	3.7%	4.7%
Machinery and transport equipment	50.49	3.5%	4.6%
Miscellaneous manufactures article	6.89	3.5%	1.5%
Commodities and transaction not classified elsewhere in the SITC	0.40	13.4%	12.3%
<b>Local Production</b>	<b>65.60</b>	<b>6.7%</b>	<b>7.5%</b>
<b>Imports</b>	<b>34.40</b>	<b>2.2%</b>	<b>4.7%</b>

Source: Department of Statistics, Malaysia

## Malaysia: Consumer Price Index

2005=100

Period	All groups	Food & non-alcoholic beverages	Alcoholic beverages & tobacco	Clothing & footwear	Housing, water, electricity, gas & other fuels	Furnishings, household equipment & routine	Health	Transport	Communication	Recreation services and culture	Education	Restaurant & hotels	Miscellaneous goods and services
<b>2007</b>													
Jan	105.1	106.0	110.3	98.3	102.2	101.8	103.1	113.2	97.8	100.8	103.1	105.0	102.4
Feb	105.1	105.9	110.3	97.2	102.5	101.7	103.2	113.2	97.7	100.9	103.2	104.9	102.6
Mar	105.0	105.4	110.3	97.5	102.5	102.0	103.2	113.4	97.6	100.7	103.3	105.4	102.6
Apr	105.0	105.4	110.3	97.6	102.5	102.0	103.4	113.4	97.5	100.7	103.3	105.7	102.8
May	105.1	105.4	110.3	97.7	102.8	102.0	103.5	113.4	97.4	100.7	103.3	106.1	102.9
June	105.3	105.7	110.3	97.7	102.8	102.1	103.6	113.6	97.3	102.8	103.4	107.2	102.8
July	105.7	106.1	120.0	97.2	102.8	102.3	103.7	113.6	97.3	103.0	103.4	108.0	102.9
Aug	105.9	106.4	120.1	96.8	103.1	102.3	103.7	113.6	97.2	103.1	103.5	108.6	103.0
Sept	106.0	106.7	120.1	97.6	103.1	102.4	104.0	113.7	97.3	103.1	103.5	109.0	103.4
Oct	106.1	107.0	120.1	96.7	103.1	102.4	104.1	113.7	97.2	103.0	103.5	109.1	103.6
Nov	106.8	108.5	120.1	97.3	103.3	102.7	104.3	113.8	97.2	103.2	103.5	110.3	104.5
Dec	107.1	109.4	120.1	96.5	103.3	102.7	104.5	113.9	97.1	103.2	103.6	111.0	104.5
<b>2008</b>													
Jan	107.5	110.1	120.2	96.9	103.4	103.0	114.3	114.3	97.0	103.3	104.6	112.0	105.4
Feb	107.9	110.7	120.2	97.3	103.9	103.3	105.0	114.3	97.0	103.5	105.4	112.6	106.0
Mar	107.9	110.6	120.2	96.6	103.9	103.5	105.1	114.3	97.0	103.4	105.5	112.9	106.4

Source: Department of Statistics, Malaysia

## Malaysia: Index of Industrial Production

Period	All Divisions	Mining	Electricity	Manufacturing
Weight	100.0	23.37	5.96	70.67
<b>2007</b>				
Jan	132.5	117.2	154.3	135.8
Feb	124.4	105.6	138.7	129.5
Mar	135.5	116.1	162.9	139.7
Apr	131.2	110.7	158.4	135.7
May	137.0	116.5	165.5	141.3
June	136.7	111.6	156.9	143.3
July	139.0	115.0	164.6	144.7
Aug	138.7	111.8	163.2	145.5
Sept	139.5	112.4	158.1	146.9
Oct	137.2	119.8	160.1	141.1
Nov	139.4	116.0	159.4	145.4
Dec	136.3	114.7	158.4	141.6
<b>2008</b>				
Weight	100.0	23.70	5.96	70.67
Jan	142.8	121.9	165.9	147.8
Feb	132.8	111.0	149.3	138.6
Mar	140.3	118.2	161.2	145.9
Apr	136.9	110.3	164.7	143.3

Note: Data from 2007–2008 refers to Consumer Price Index (2000=100) for Malaysia.

Source: Department of Statistics, Malaysia