

# Penang Statistics

## Quarter 2, 2007



Submitted to the Penang State Government  
by  
Socio-Economic & Environmental Research Institute  
10 Brown Road, 10350 Penang  
Tel: (04) 228 3306 Fax: 226 7042  
E-mail: [seripg@tm.net.my](mailto:seripg@tm.net.my)  
Website: <http://www.seri.com.my>

## CONTENTS

<b>PHYSICAL ATTRIBUTES</b>	
Area, Location & Climate	3
<b>DEMOGRAPHY</b>	
Penang: Estimated Population (in '000) and Distribution by Districts	3
Penang: Estimated Population by Gender (in '000)	3
Penang: Estimated Population by Ethnic Group (in '000)	4
<b>ECONOMIC</b>	
Penang: Growth Rate of Gross Regional Product (In 1987 – Constant Prices)	5
<b>EMPLOYMENT</b>	
Penang: Percentage of Employed Persons by Industry (%), 2001 – 2005	5
<b>PRIMARY SECTOR</b>	
<b>AGRICULTURE</b>	
Penang: Agriculture Land use by Crops (In Hectares), 2001-2005	6
<b>LIVESTOCK</b>	
Penang: Livestock Production, 2001 - 2005	6
Penang: Production and Value of Livestock, 2004 - 2005	7
<b>FISHERIES</b>	
Penang: Landings of Marine Fish, Jan – June, 2007	7
<b>SECONDARY SECTOR</b>	
<b>MANUFACTURING</b>	
Penang: Approved Projects by Locations, January – June 2007	8
Penang: Approved Manufacturing Projects By Industry, January – June 2007	9
Approved Manufacturing Projects And Investment By State, January – June, 2007	9
<b>TERTIARY SECTOR</b>	
<b>UTILITIES</b>	
<b>WATER</b>	
Penang: Water Output And Consumption ('000) cubic metres), 1999 – 2007	10
Penang: Daily Water Supply, 2006 - 2007	11
<b>ELECTRICITY</b>	
Penang: Electricity Supplied and Consumed	11
Penang: Power Demand & Supply, 2000 - 2010	11
<b>TELECOMMUNICATIONS</b>	
Direct Exchange Line (DEL) Penetration Rate by State, 2007	12
Internet Dial-Up Penetration Rate by State, 2007	13
Broadband Penetration Rate, 2007	14
Number of Hotspot Locations by State, 2007	15
<b>TRANSPORT</b>	
<b>ROAD TRANSPORT</b>	
New Motor Vehicle Registration, 2006	16
Motor Vehicle Re-registration, 2006	16
<b>TRADE</b>	
<b>TRADE BALANCE</b>	
Export, Import & Balance of Trade, 2005 - 2006 (RM million)	17

**AIRPORT**

Aircraft Movement per annum, 2007	18
Number of Passengers (Domestic & International) per annum, 2007	18
Cargo Handled (Domestic & International) per annum, 2007	19

**PORT**

Annual Number of Shipcalls, 1990 – 2006	21
Gross Registered Tonnage (Domestic & Foreign), 1990 – 2006	21
Type of Cargo Handled, 1990 – 2006	22

**TOURISM**

Penang: Average Occupancy Rate, Number of Registered Guests and Estimated Total Visitor Arrivals, 2001 – 2006	23
---	----

**PROPERTY**

Penang: House Price Index, 1999-2006	23
Penang: Number of Transactions by Price Range for the Principal Property Sub-Sectors, 2005 & 2006	23
Penang: Value of Transactions by Price Range for the Principal Property Sub-Sectors, 2005 & 2006 (in RM million)	24

**EDUCATION**

Penang: Number of Schools, Students & Teachers At The Primary Level, 2007	25
Penang: Number of Schools, Students & Teachers At The Secondary Level, 2007	25
Penang: Numbers of Schools, Students & Teachers At The Pre-School 2007	25

**HEALTH**

Penang: Ratio of Medical Professionals-Population As , 2007	
Penang: Health Facilities,As, 2007	25
Penang: Number of Beds, Bed Occupancy Rate (BOR) & Average Length of Stay (ALOS) for Government Hospitals, As, 2007	27
Penang: HIV / AIDS (Total Identified Cases),As, 2007	27

**SELECTED NATIONAL STATISTICS**

Malaysia: Gross Domestic Product by Sector	28
Malaysia: Currency Exchange Rates	28
Malaysia: National Indices & Employment Data	28
Malaysia: Federal Government Accounts	29
Malaysia: Producer Price Index	29
Malaysia: Consumer Price Index	30
Malaysia: Index of Industrial Production	31

*Disclaimer :*

*All data are correct at the time of publication and are subject to adjustments and revision by the respective sources. The Socio-economic & Environmental Research Institute (SERI) will not be responsible for any loss or damage caused by the usage of any information obtained from this publication.*

## PHYSICAL ATTRIBUTES

### Area:

<b>State of Penang</b>	<b>1,030 sq km</b>
Timur Laut	119 sq km
Barat Daya	173 sq km
Seberang Perai Utara	262 sq km
Seberang Perai Tengah	235 sq km
Seberang Perai Selatan	241 sq km

### Location:

Latitudes	5°8' - 5°35'
Longitudes	100°8' - 100°32'

## DEMOGRAPHY

### Penang: Estimated Population (in '000) and Distribution by Districts

District	1991	2000	2004	2005	2006
	(census)	(census)	(estimate)	(estimate)	(estimate)
Timur Laut	395.7	444.9	476.2	483.0	486.6
Barat Daya	122.8	169.4	191.3	195.5	201.5
Seberang Perai Utara	224.6	259.8	283.4	288.0	292.8
Seberang Perai Tengah	236.3	313.6	348.8	356.0	362.4
Seberang Perai Selatan	84.8	125.7	143.1	146.3	149.1
<b>State of Penang</b>	<b>1,064.2</b>	<b>1,313.4</b>	<b>1,442.8</b>	<b>1,468.8</b>	<b>1,492.4</b>

Source: State Population Report, Penang, 1991, Department of Statistics (DOS), Malaysia; Population and Housing Census of Malaysia 2000: Population Distribution and Basic Demographic Characteristics, DOS, Malaysia; DOS, Penang.

Note: Slight discrepancies may occur due to rounding.

### Penang: Estimated Population by Sex (in '000)

Gender	1991	2000	2004	2005	2006
	(census)	(census)	(estimate)	(estimate)	(estimate)
Male	526.0	654.1	715.2	727.3	738.2
Female	538.1	659.4	727.6	741.5	754.2
<b>Total</b>	<b>1,064.2</b>	<b>1,313.4</b>	<b>1,442.8</b>	<b>1,468.8</b>	<b>1,492.4</b>

Source: State Population Report, Penang, 1991, DOS, Malaysia; Population and Housing Census of Malaysia 2000: Population Distribution and Basic Demographic Characteristics, DOS, Malaysia; DOS, Malaysia; DOS, Penang.

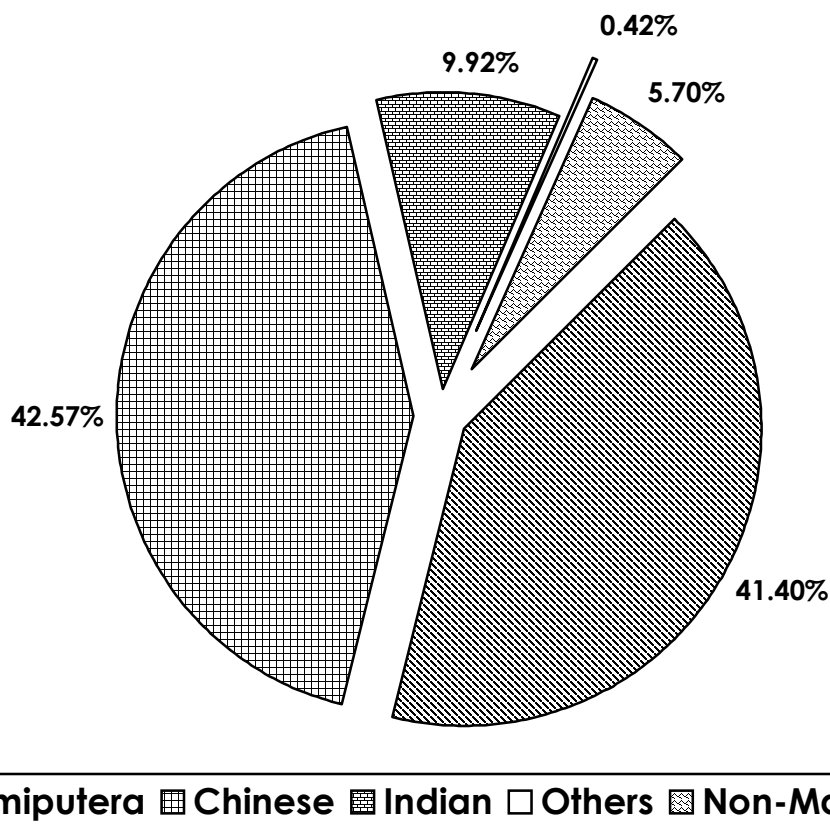
Note: Slight discrepancies may occur due to rounding.

**Penang: Estimated Population by Ethnic Group (in '000)**

Ethnic Group	1991	2000	2004	2005	2006
	(census)	(census)	(estimate)	(estimate)	(estimate)
Malaysian:	1,048.3	1,265.1	1,370.1	1390.6	1,407.4
Malays	405.4	533.1	587.3	600.3	612.3
Other Bumiputera	1.1	3.9	5.0	5.3	5.6
Chinese	523.2	588.7	626.4	631.8	635.3
Indians	112.8	133.9	145.4	147.1	148.0
Others	5.8	5.4	6.0	6.1	6.2
Non-Malaysian Citizens	15.9	48.4	72.7	78.2	85.0
<b>Total</b>	<b>1,064.2</b>	<b>1,313.4</b>	<b>1,442.8</b>	<b>1,468.8</b>	<b>1,492.4</b>

Source: State Population Report, Penang, 1991, DOS, Malaysia; Population and Housing Census of Malaysia 2000: Population Distribution and Basic Demographic Characteristics, DOS, Malaysia; DOS, Penang.  
 Note: Slight discrepancies may occur due to rounding.

**Population By Ethnic Group, 2006**



Source: Department Of Statistics, Penang

## ECONOMIC

### Penang: Growth Rate of Gross Regional Product (In 1987 – Constant Prices)

(RM Million)	2001	2002	2003	2004	2005
Agriculture, forestry, fishing	2.1	4.9	4.7	5.7	4.5
Mining & Quarrying	0.3	0.2	-3.0	-6.8	-0.5
Manufacturing	-4.2	6.1	7.2	9.7	6.5
Construction	-1.4	-4.0	2.6	-10.7	-1.1
Tertiary	2.3	5.7	4.4	7.5	7.3
<b>Total</b>	<b>-0.6</b>	<b>5.6</b>	<b>5.4</b>	<b>7.9</b>	<b>6.7</b>

Source: SERI

Note: Please note that SERI has revised the previous GDP growth estimates. The release of the State GRP figures in the 9<sup>th</sup> Malaysia Plan (9MP) as compiled by the Economic Planning Unit (EPU) provides SERI with a point of reference for its GRP projections for the State. SERI's estimates of GRP are compiled and projected based on data available at the State level. To a large extent, it is dependent upon the cooperation of both public and private sectors in voluntary and timely disclosure and reporting of data.

## EMPLOYMENT

### Penang: Percentage of Employed Persons by Industry (%), 2001 - 2005

Industry	2001	2002	2003	2004	2005
Agriculture, hunting and forestry	1.5	1.8	1.2	2.4	1.9
Fishing	0.7	0.6	0.8	1.5	0.7
Mining and quarrying	0.2	0.0	0.1	0.1	0.1
Manufacturing	40.8	40.4	37.1	37.7	36.2
Electricity, gas and water supply	0.5	0.4	0.5	0.4	0.6
Construction	6.4	7.0	6.6	7.1	6.8
Wholesale and retail trade; repair of motor vehicles, motorcycles and personal and household goods	15.6	16.0	16.4	15.0	15.2
Hotels and restaurants	7.4	6.8	8.6	8.2	7.7
Transport, storage and communication	4.7	5.3	5.3	5.5	5.7
Financial intermediation	2.3	2.6	2.3	2.2	2.2
Real estate, renting and business activities	4.4	4.3	4.5	4.2	3.8
Public administration and defense; compulsory social security	4.2	3.9	4.2	3.5	5.5
Education	4.2	4.2	4.7	5.0	5.2
Health and social work	2.8	2.6	2.6	1.9	2.9
Other community, social and personal service	2.0	1.9	2.1	2.2	2.7
Private households with employed persons	2.4	2.3	2.9	3.1	2.9
Extra-territorial organisations and bodies	0.0	0.0	0.0	0.0	0.0
<b>Total</b>	<b>100.0</b>	<b>100.0</b>	<b>100.0</b>	<b>100.0</b>	<b>100.0</b>

Source: Labour Force Survey, DOS, Malaysia

Note: Slight discrepancies may occur due to rounding.

# PRIMARY SECTOR

## AGRICULTURE

**Penang: Agriculture Landuse by Crops (hectares), 2001-2005**

Type	Year				
	2001	2002	2003	2004	2005
Rubber	12,758	12,758	12,758	11,765	11,177
Oil Palm	14,821	13,725	14,329	13,868	14,074
Paddy	13,448	13,448	13,448	12,782	12,782
Coconut	2,339	2,309	2,313	2,175	2,119
Cocoa	104	75	75	61	58
Vegetables	458	423	404	460	481
Fruits	6,830	6,760	6,802	6,872	6,668
Cloves	190	196	148	163	169
Nutmeg	75	70	38	-	-
Cash Crops	247	190	242	309	235
Others	74	55	21	58	56
<b>Total</b>	<b>51,344</b>	<b>50,009</b>	<b>50,578</b>	<b>48,513</b>	<b>47,819</b>

Source: Derived from data from the Jabatan Pertanian Negeri Pulau Pinang, MPOB and RISDA

Note: Slight discrepancies may occur due to rounding.

## LIVESTOCK

**Penang: Livestock Production, 2001-2005**

Type	Year				
	2001	2002	2003	2004	2005
Meat ( '000 Metric Tons)					
Cattle & Buffalo	1.10	1.01	0.99	0.91	0.78
Goat & Sheep	0.04	0.03	0.03	0.02	0.02
Chicken & Ducks	48.67	50.70	73.86	50.00	64.30
<b>Total</b>	<b>49.81</b>	<b>51.74</b>	<b>74.88</b>	<b>50.93</b>	<b>65.1</b>

Source: Department of Veterinary Services, Penang

**Penang: Production and Value of Livestock, 2004 – 2005**

Commodity	2004			2005		
	Production (Metric Tonnes)	Value (RM Million)	%	Production (Metric Tonnes)	Value (RM Million)	%
<b>Meat</b>						
Cow	848.94	10.10	2.41	731.00	8.7	1.84
Buffalo	57.69	0.69	0.16	37.44	0.45	0.09
Goat / Lamb	21.82	0.26	0.06	15.35	0.18	0.04
Pig	18,176.50	99.06	23.67	16,936.27	92.3	19.51
Chicken	49,583.88	228.09	54.50	64,283.26	295.7	62.50
Duck	414.57	2.01	0.48	2,437.31	11.82	2.50
Quail	12.07	0.11	0.03	69.6	0.61	0.13
Rabbit	1.60	0.02	0.00	0.00	0.00	0.00
<b>Eggs</b>	(No. of eggs)					
Chicken	284,998,820	71.25	17.03	294,412,860	58.88	12.45
Duck	10,848,000	4.34	1.04	16,440,000	4.11	0.87
Quail	20,120,000	2.21	0.53	0	0.00	0.00
<b>Milk</b>	(Liter)					
Fresh milk	455,440	0.34	0.08	455,440	0.34	0.07
	<b>Total</b>	418.48	100.00	<b>Total</b>	473.10	100.00

Source: Livestock Survey 2003 & 2004, Department of Veterinary Services, Penang

**FISHERIES****Penang: Landings of Marine Fish, Jan – June, 2007**

Month	Quantity (‘000 tonnes)	Value (RM million)
January	2,503.41	13,412,277.47
February	2,710.09	14,716,104.54
March	2,684.77	14,262,055.98
April	3,233.74	17,489,673.77
May	2,982.25	14,966,525.64
June	2,421.76	12,581,796.47
<b>Total</b>	<b>16,536.01</b>	<b>87,428,433.86</b>

Source: Department of Fisheries, Penang



## SECONDARY SECTOR MANUFACTURING

### Penang: Approved Manufacturing Projects by Locations, January – June, 2007

Location	TOTAL Number	Employment	Domestic Investment (RM)	Foreign Investment (RM)	Total Capital Investment (RM)
Prai IE	10	2610	841,906,002	92,288,440	938,194,442
Prai FTZ	2	18	0	4,570,000	4,570,000
Mak Mandin IE	2	42	4,276,000	0	4,276,000
Butterworth	7	406	29,219,778	773,760	29,993,538
Bayan Lepas Ph I IE	1	102	36,410,509	241,906	36,652,415
Bayan Lepas Ph I FTZ	4	99	55,139,676	90,880,000	86,019,676
Bayan Lepas Ph III FTZ	1	8	916,000	1,374,000	2,290,000
Other Areas	9	544	39,976,156	87,859,283	127,835,439
Bayan Lepas Ph IV FTZ	6	311	56,130,319	60,419,496	116,549,815
Prai IV IE	1	98	13,757,386	0	13,757,386
Bayan Lepas	7	574	3,638,769	762,565,338	766,204,107
Bukit Mertajam	7	403	26,233,300	13,300	26,246,600
Bukit Minyak S.Prai Tengah	3	288	15,234,385	0	15,234,385
Jelutong	1	24	2,300,000	0	2,300,000
Permatang Tinggi	1	60	2,122,000	0	2,122,000
Prai IV	3	71	2,402,610	2,072,000	4,474,610
Seberang Prai	5	203	20,775,000	27,672,000	48,447,000
Teluk Kumbar	1	13	3,821,066	0	3,821,066
<b>Total</b>	<b>71</b>	<b>5874</b>	<b>1,154,258,956</b>	<b>1,074,729,523</b>	<b>2,228,988,479</b>

Source: MIDA Penang

Note: Slight discrepancies may occur due to rounding. Data is subject to adjustments and revisions by MIDA.

**Penang: Approved Manufacturing Projects by Industry, January – June, 2007**

Industry	Number	Employment	Domestic Investment (RM)	Foreign Investment(RM)	Total Capital Investment(RM)
Food Manufacturing	2	178	18,018,663	773,760	18,792,423
Textiles & Textile Products	1	94	4,653,000	47,000	4,700,000
Wood & Wood Products	3	138	17,208,100	3,732,900	20,941,000
Furniture & Fixtures	3	172	6,616,438	0	6,616,438
Paper, Printing & Publishing	1	16	2,591,500	0	2,591,500
Chemical & Chemical Products	1	52	10,048,000	15,072,000	25,120,000
Plastic Products	4	180	22,256,633	4,570,000	26,826,633
Basic Metals Products	6	912	866,257,386	44,700,000	910,957,386
Fabricated Metal Products	17	285	18,563,035	7,204,142	25,767,177
Machinery Manufacturing	15	608	108,982,428	63,563,702	172,546,130
Electronics & Electrical Products	13	2,451	60,470,386	873,172,589	933,642,975
Transport Equipment	3	486	6,118,002	1,893,430	8,011,432
Scientific & Measuring Equipment	1	96	0	60,000,000	60,000,000
Miscellaneous	1	206	12,475,385	0	12,475,385
<b>Total</b>	<b>71</b>	<b>5,874</b>	<b>1,154,258,956</b>	<b>1,074,729,523</b>	<b>2,228,988,479</b>

Source: MIDA Penang

Note: Slight discrepancies may occur due to rounding. Data is subject to adjustments and revisions by MIDA.

## Approved Manufacturing Projects By State, January – June, 2007

State	Number	Employment	Domestic Investment(RM)	Foreign Investment (RM)
W.P Kuala Lumpur	6	286	31,683,334	32,556,384
Selangor	157	12,669	1,579,386,216	2,640,048,192
Pulau Pinang	71	5,874	1,154,258,956	1,074,729,523
Perak	28	2,742	258,968,543	156,225,550
Johor	96	17,845	1,283,143,096	4,625,307,845
Negeri Sembilan	19	1,931	123,910,444	1,411,124,237
Melaka	14	570	51,389,267	24,488,318
Kedah	24	2,246	7,535,185,518	3,924,331,393
Pahang	12	623	305,145,683	113,917,538
Kelantan	5	1,104	16,815,000	0
Terengganu	5	786	1,287,121,522	284,154,000
Perlis	1	0	0	0
Sabah	22	1,112	429,631,711	177,186,050
Sarawak	9	837	271,841,760	7,545,240
<b>Total</b>	<b>469</b>	<b>48,625</b>	<b>14,328,481,050</b>	<b>14,471,614,270</b>

Source: MIDA Penang

Note: Slight discrepancies may occur due to rounding. Data is subject to adjustments and revisions by MIDA.

## TERTIARY SECTOR

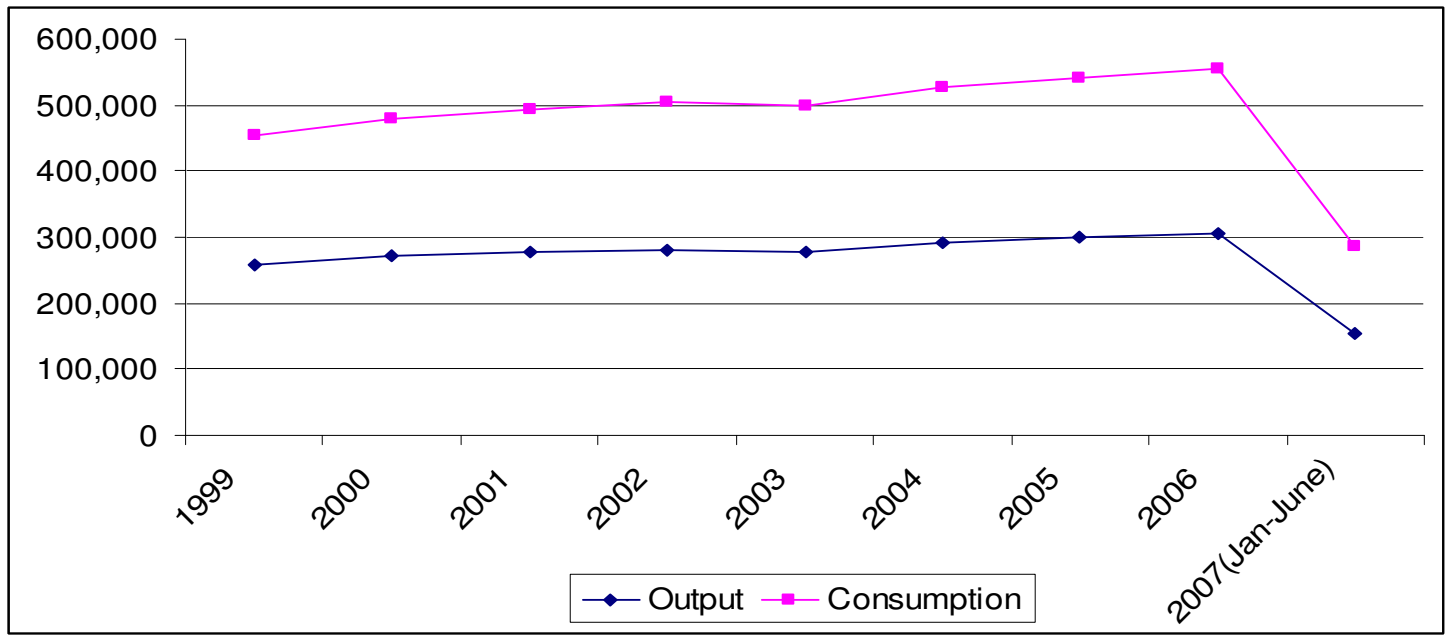
### UTILITIES

#### WATER

#### Penang: Water Output And Consumption ('000 cubic Metres), 1999 - 2007

Year	Output	% Increase	Consumption	% Increase
1999	257,307	4.8%	195,801	0.1%
2000	271,258	5.4%	208,183	6.3%
2001	278,395	2.6%	216,380	3.9%
2002	280,161	0.6%	224,632	3.8%
2003	277,066	-1.1%	223,390	-0.6%
2004	292,858	5.7%	233,057	4.3%
2005	298,985	2.1%	240,999	3.4%
2006	306,578	2.5%	249,439	3.5%
<b>2007(Jan-June)</b>	<b>155,455</b>	<b>2.1%</b>	<b>130,355</b>	<b>5.9%</b>

Source: Derived from data provided by Perbadanan Bekalan Air Pulau Pinang Sdn Bhd (PBA)



### Penang: Daily Water Supply, 2006 – 2007

	2006			2007 (As At June)		
	Penang Island	Seberang Perai	Penang State	Penang Island	Seberang Perai	Penang State
No. of Treatment Plants	5	4	9	5	4	9
Max. Capacity of Treatment Plants (cu.m/day)	309,364	956,818	1,266,182	309,364	956,818	1,266,182
Average Daily Production (cu.m)	87,742	753,721	841,463	108,662	750,207	858,869
Average Daily Consumption (cu.m)	329,806	650,503	680,309	344,244	375,951	720,195
No. of Services (consumers)	217,117	222,513	439,630	223,307	230,475	453,782
Daily Consumption (cu.m)						
Per Consumer	1.52	1.58	1.55	1.54	1.63	1.59
Per Industrial Consumer	5.97	4.68	5.32	5.92	4.83	5.38
Per Domestic Consumer	1.01	1.10	1.06	1.01	1.14	1.08

Source: Derived from data provided by Perbadanan Bekalan Air Pulau Pinang Sdn Bhd(PBA)

**ELECTRICITY****Penang: Electricity Supplied and Consumed**

Transaction	2006 (Jan – Mar)
<b>Total Supply (GWh)</b>	<b>2,111,440</b>
Consumption of Electricity (Gwh)	
Own Consumption by Private Installation (GWh)	<b>1.966</b>
Distribution by Public Installation by Types of Consumers (GWh)	
Domestic	297,149
Commercial	444,601
Industrial	1,219,814
Public Lighting	9,907
<b>Total</b>	<b>1,971,471</b>
Electricity Exported	<b>0</b>
Losses in Transmissions and Statistical Discrepancies	<b>138,003</b>

Note: Excluding demand of 132kV customers supplied via direct 132kV connection

Source: Tenaga Nasional Berhad, Penang

**Penang: Power Demand & Supply, 2000 - 2010**

Year	Maximum Demand (MW)	Installed Capacity (MW)	Excess Capacity %
2000	950	2,518	62%
2001	1,012	2,828	64%
2002	1,049	2,666	61%
2003	1,085	2,788	61%
2004	1,108	2,795	60%
2005	1,121	2,957	62%
2006	1,202	3,254	63%
2007*	1,284	3,294	61%
2008*	1,361	3,294	59%
2009*	1,437	3,267	56%
2010*	1,529	3,267	53%

Note: Excluding demand of 132kV customers supplied via direct 132kV connection

\* projections which allow for excess capacity to be monitored

Source: Tenaga Nasional Berhad, Penang

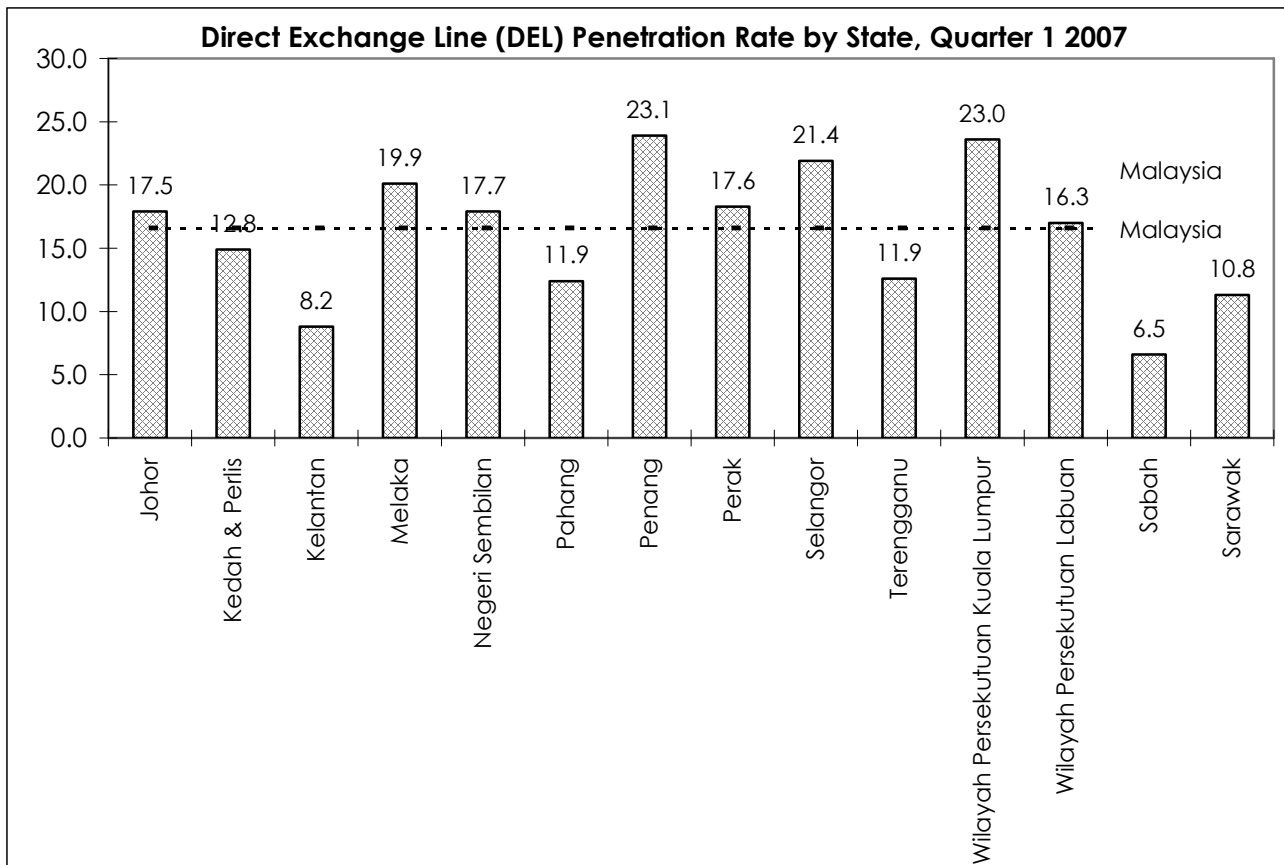
## TELECOMMUNICATIONS

### Direct Exchange Line (DEL) Penetration Rate by State, 2007

State	2006	2007 (Q1)
Johor	17.4	17.5
Kedah & Perlis	12.9	12.8
Kelantan	8.2	8.2
Melaka	20.0	19.9
Negeri Sembilan	17.5	17.7
Pahang	11.8	11.9
<b>Penang</b>	<b>23.2</b>	<b>23.1</b>
Perak	17.8	17.6
Selangor	21.0	21.4
Terengganu	12.0	11.9
Wilayah Persekutuan Kuala Lumpur	22.6	23.0
Wilayah Persekutuan Labuan	16.2	16.3
Sabah	6.4	6.5
Sarawak	10.9	10.8

Note: Direct Exchange Line (DEL) connects a customer's equipment to the Public Switched telephone Network (PSTN) and has a dedicated port on a telephone exchange. The penetration rate refers to the total DELs to residential as well business.

Source: Malaysian Communications and Multimedia Commission (MCMC)

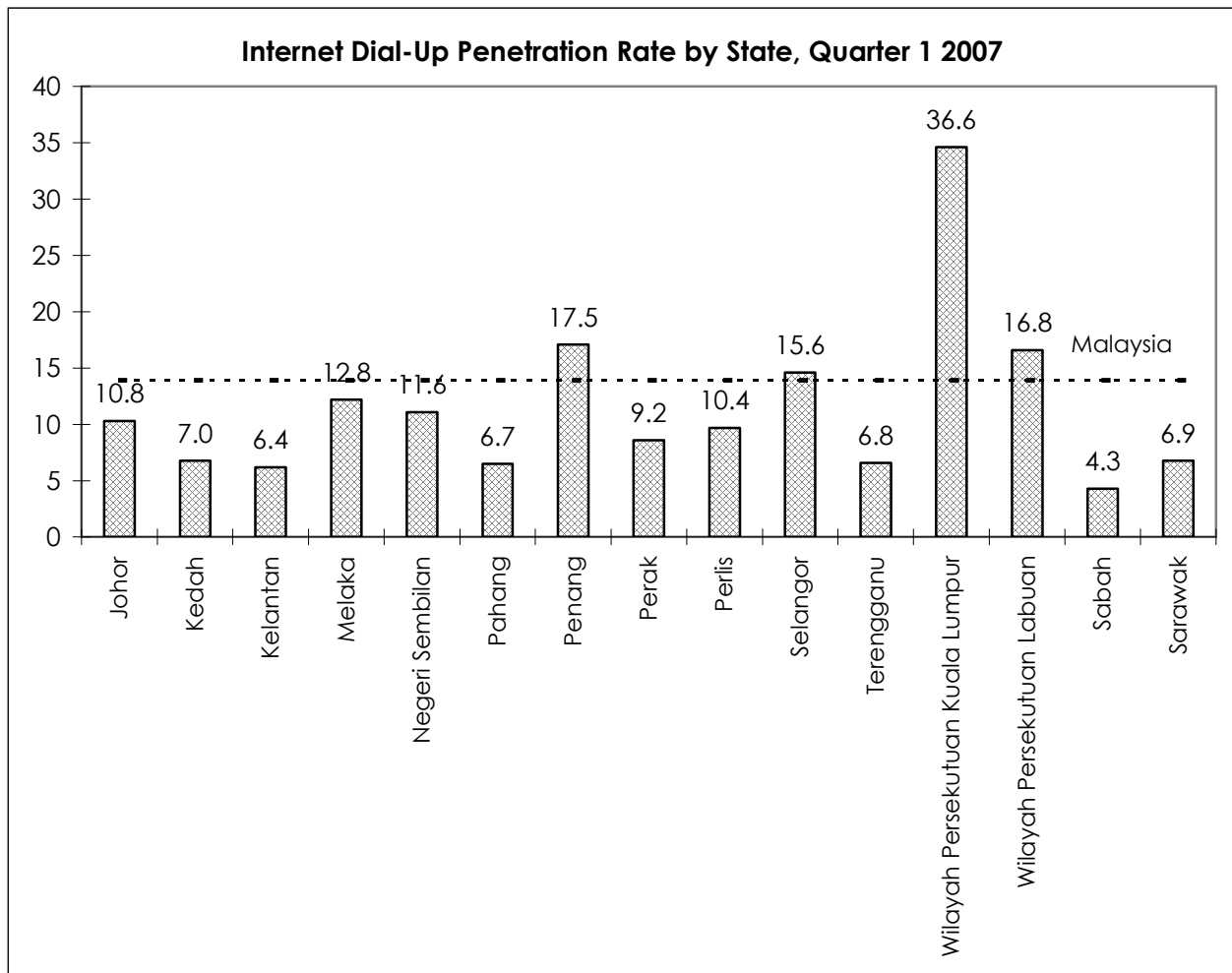


Source: Malaysian Communications and Multimedia Commission (MCMC)

### Internet Dial-Up Penetration Rate by State, 2007

State	2006	2007 (Q1)
Johor	10.6	10.8
Kedah	7.0	7.0
Kelantan	6.4	6.4
Melaka	12.5	12.8
Negeri Sembilan	11.5	11.6
Pahang	6.5	6.7
<b>Penang</b>	<b>17.3</b>	<b>17.5</b>
Perak	9.1	9.2
Perlis	10.3	10.4
Selangor	15.4	15.6
Terengganu	6.6	6.8
Wilayah Persekutuan Kuala Lumpur	36.2	36.6
Wilayah Persekutuan Labuan	16.7	16.8
Sabah	4.3	4.3
Sarawak	6.8	6.9

Source: Malaysian Communications and Multimedia Commission (MCMC), PIKOM



Source: Malaysian Communications and Multimedia Commission (MCMC), PIKOM

**Broadband Penetration Rate per 100 Households by State, 2007 (Q1)**

State	Broadband Penetration Rate per 100 Households by State, 2007 (Q1)
Selangor	19.8
Johor	9.3
Wilayah Persekutuan Kuala Lumpur	34.5
<b>Penang</b>	<b>21.3</b>
Perak	7.3
Sabah	4.9
Kedah	5.4
Sarawak	7.2
Pahang	4.6
Negeri Sembilan	7.6
Kelantan	3.2
Melaka	10.7
Terengganu	4.6
Perlis	3.8
Wilayah Persekutuan Labuan	10.8

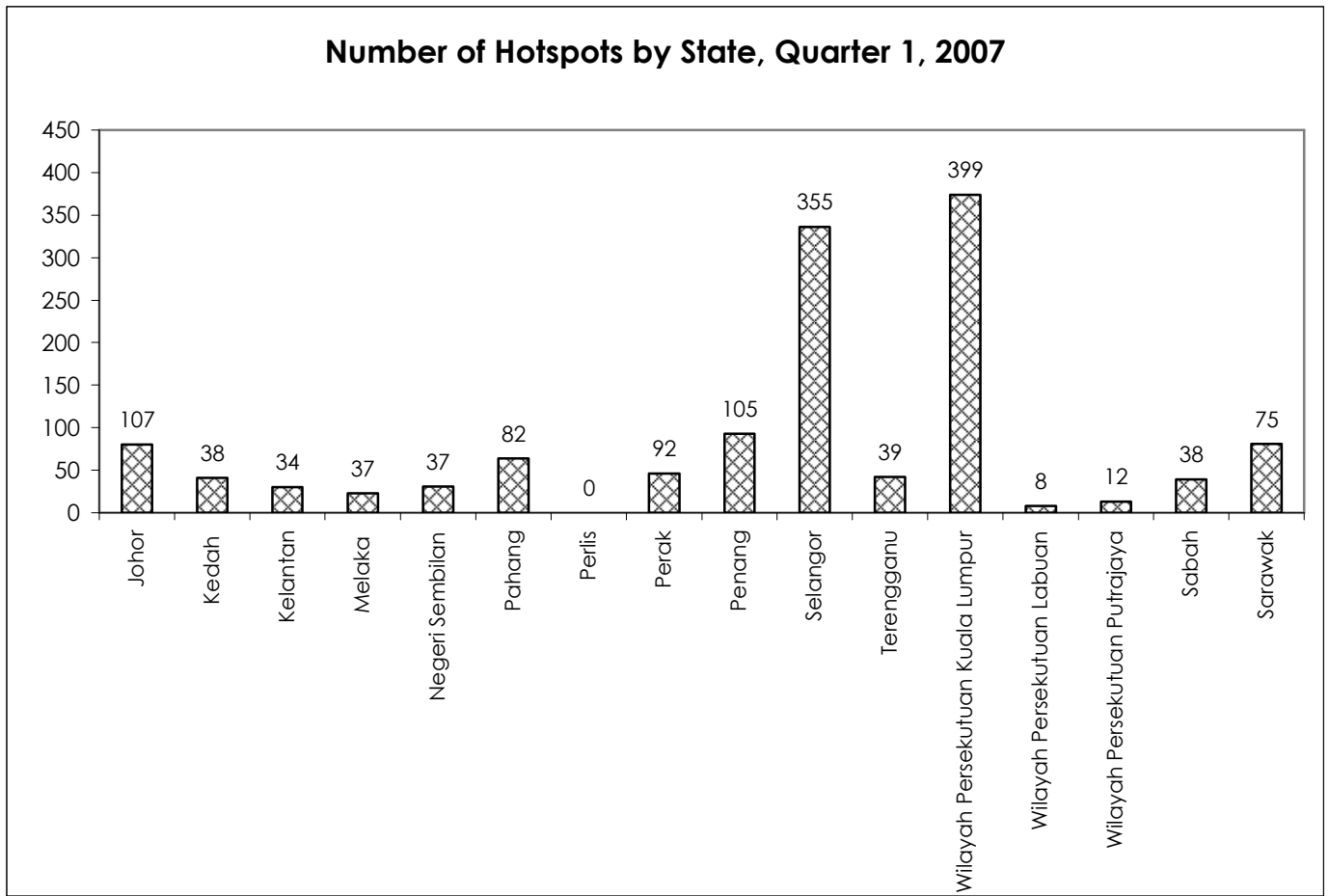
Source: MCMC

**Number of Hotspot Locations by State, 2006-2007**

State	2006	Quarter 1, 2007
Johor	94	104
Kedah	31	38
Kelantan	30	34
Melaka	34	37
Negeri Sembilan	31	37
Pahang	80	82
Perak	43	92
<b>Penang</b>	<b>94</b>	<b>105</b>
Selangor	352	355
Terengganu	35	39
Wilayah Persekutuan Kuala Lumpur	395	399
Wilayah Persekutuan Labuan	9	9
Wilayah Persekutuan Putrajaya	11	12
Sabah	44	38
Sarawak	75	75

Source: Malaysian Communications and Multimedia Commission (MCMC)





Source: Malaysian Communications and Multimedia Commission (MCMC)

# ROAD TRANSPORT

## New Motor Vehicle Registration, 2006

Month	Region	Motorcycle	Private Passenger Car	Taxi	Bus	Lorry & Van	Hire Cars	Others	Total
January	Penang	4,344	3,874	15	3	0	172	65	8,473
	Malaysia	38,865	38,728	154	384	150	2,547	1,104	81,932
February	Penang	4,247	3,336	3	6	2	134	63	7,791
	Malaysia	38,125	32,533	75	381	243	2,109	1,063	74,619
March	Penang	5,217	4,510	7	11	4	211	40	9,910
	Malaysia	46,114	43,697	184	553	225	3,307	1,533	95,613
April	Penang	4,470	4,197	9	7	6	213	53	8,955
	Malaysia	38,113	38,591	140	377	126	2,869	1,153	81,369
May	Penang	4,196	4,357	10	11	4	323	63	8,964
	Malaysia	37,723	41,842	196	436	151	3,029	1,456	84,833
June	Penang	3,904	4,439	4	15	8	284	56	8,710
	Malaysia	35,144	39,928	172	460	221	3,165	1,401	80,491
July	Penang	4,102	4,131	5	16	0	259	34	8,547
	Malaysia	38,567	38,422	116	272	264	3,063	1,352	82,056
August	Penang	4,248	4,807	12	30	17	246	40	9,400
	Malaysia	40,164	45,094	153	389	281	3,211	1,449	90,741
September	Penang	3,963	3,961	12	20	7	240	66	8,269
	Malaysia	38,085	40,327	319	397	234	3,347	1,632	84,341
October	Penang	3,322	3,096	6	10	9	163	42	6,648
	Malaysia	33,682	33,898	181	260	203	2,906	1,471	72,601
November	Penang	3,703	3,606	2	11	0	278	36	7,636
	Malaysia	31,898	31,886	147	295	159	3,097	2,901	70,383
December	Penang	3,853	4,090	5	11	0	199	54	8,212
	Malaysia	32,181	33,348	202	433	157	3,027	3,186	72,534

Source: Derived from the statistics provided by Jabatan Pengangkutan Jalan, Malaysia

**Motor Vehicle Re-registration, 2006**

Month	Region	Motorcycle	Private Passenger Car	Taxi	Bus	Lorry & Van	Hire Cars	Others	Total
January	Penang	883,808	637,135	3,064	4,788	49,749	391	15,620	1,594,555
	Malaysia	7,053,972	6,515,799	67,760	57,620	807,562	11,532	394,667	14,908,912
February	Penang	887,372	640,308	3,068	4,793	49,846	391	15,673	1,601,451
	Malaysia	7,087,002	6,547,578	67,975	57,718	809,195	11,566	395,502	14,976,536
March	Penang	892,309	644,696	3,075	4,804	50,038	386	15,707	1,611,015
	Malaysia	7,130,901	6,590,796	68,323	57,970	812,041	11,359	396,730	15,068,120
April	Penang	896,781	648,917	3,080	4,813	50,231	387	15,768	1,619,977
	Malaysia	7,169,081	6,630,207	68,557	58,130	814,532	11,280	397,760	15,149,547
May	Penang	901,156	653,465	3,086	4,822	50,533	386	15,840	1,629,288
	Malaysia	7,208,531	6,674,419	68,840	58,365	817,297	11,211	399,179	15,237,842
June	Penang	904,881	657,773	3,097	4,829	50,796	395	15,893	1,637,664
	Malaysia	7,242,177	6,713,730	69,130	58,576	819,920	11,272	400,345	15,315,150
July	Penang	909,200	662,067	3,116	4,832	51,048	395	15,938	1,646,596
	Malaysia	7,282,896	6,754,569	69,263	58,749	822,776	11,419	401,637	15,401,309
August	Penang	913,370	666,907	3,151	4,846	51,272	414	15,962	1,655,922
	Malaysia	7,322,243	6,800,398	69,520	58,945	825,532	11,547	402,999	15,491,184
September	Penang	917,205	670,724	3,167	4,863	51,485	417	16,025	1,663,886
	Malaysia	7,359,310	6,839,990	69,747	59,300	828,414	11,534	404,580	15,572,875
October	Penang	920,790	673,924	3,179	4,873	51,638	415	16,067	1,670,886
	Malaysia	7,394,456	6,875,430	69,924	59,535	831,135	11,548	406,066	15,648,094
November	Penang	924,525	677,681	3,190	4,875	51,867	380	16,129	1,678,647
	Malaysia	7,426,589	6,908,361	70,102	59,731	833,922	11,577	408,922	15,719,204
December	Penang	928,280	681,748	3,198	4,885	52,050	369	16,212	1,686,742
	Malaysia	7,458,128	6,941,996	70,409	59,991	836,579	11,638	411,991	15,790,732

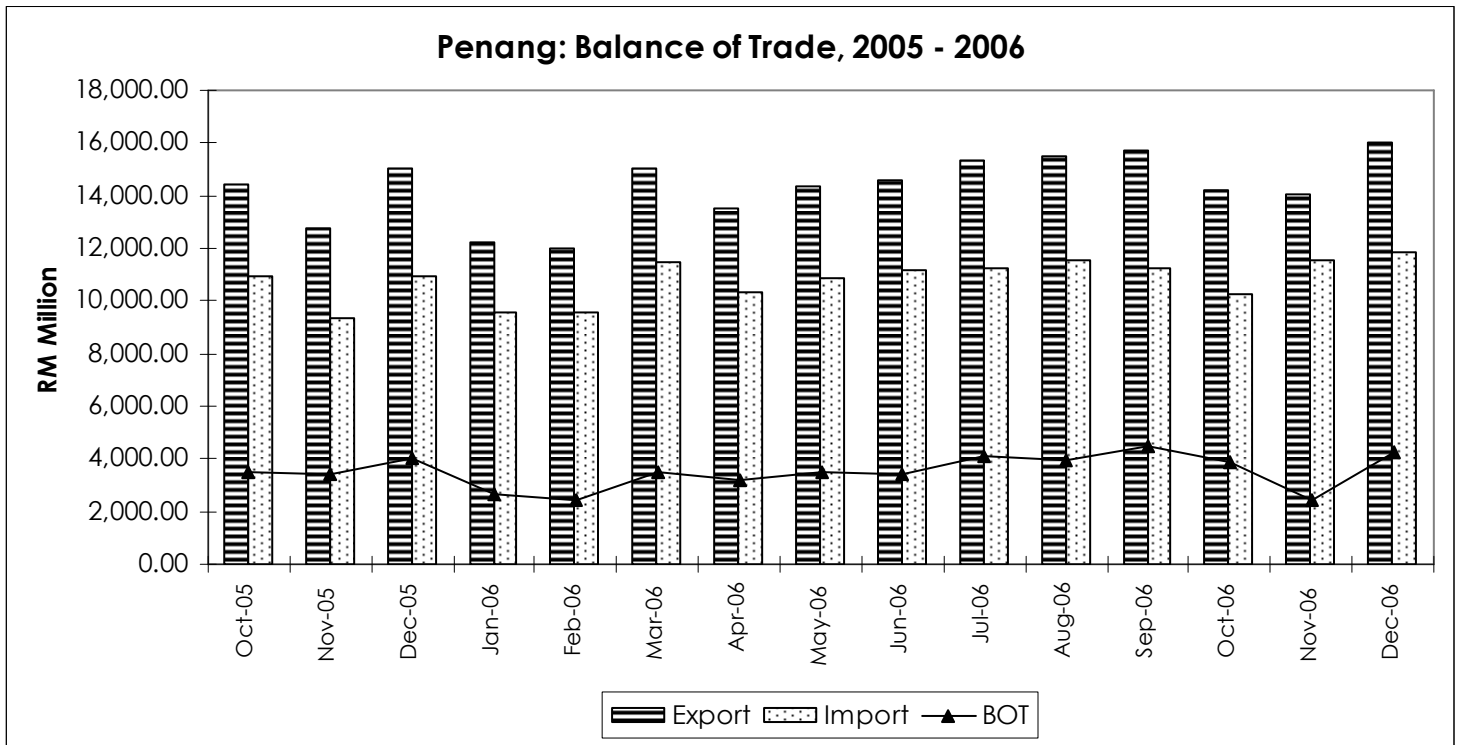
Source: Derived from the statistics provided by Jabatan Pengangkutan Jalan, Malaysia

**TRADE****TRADE BALANCE**

2005	MALAYSIA			PENANG		
	Export	Import	BOT	Export	Import	BOT
Oct	49,722.99	39,203.45	10,519.54	14,416.95	10,954.49	3,462.47
Nov	43,424.36	34,791.96	8,632.40	12,778.53	9,338.35	3,440.18
Dec	49,467.72	40,037.39	9,430.33	15,000.75	10,946.75	4,053.99
<b>TOTAL</b>	<b>142,615.07</b>	<b>114,032.8</b>	<b>28,582.27</b>	<b>42,196.23</b>	<b>31,239.59</b>	<b>10,956.64</b>
2006	MALAYSIA			PENANG		
	Export	Import	BOT	Export	Import	BOT
Jan	43,160.77	34,344.14	8,816.62	12,232.83	9,585.37	2,647.45
Feb	42,269.38	34,884.31	7,385.07	12,012.51	9,567.31	2,445.20
Mar	51,275.35	41,695.35	9,580.00	15,010.92	11,502.72	3,508.21
Apr	45,711.36	39,083.74	6,627.62	13,505.33	10,335.76	3,169.56
Mei	48,239.37	40,250.06	7,989.31	14,320.82	10,838.77	3,482.04
Jun	49,218.57	40,979.47	8,239.11	14,607.07	11,188.45	3,418.62
July	50,525.92	41,489.78	9,036.13	15,316.91	11,241.11	4,075.80
Aug	53,444.15	43,345.28	10,098.86	15,488.79	11,508.43	3,980.36
Sept	53,119.83	42,881.29	10,238.54	15,719.05	11,252.49	4,466.56
Oct	48,052.35	38,625.22	9,427.13	14,182.70	10,289.48	3,893.21
Nov	51,423.24	42,249.35	9,173.89	14,018.89	11,551.53	2,467.37
Dec	52,525.19	40,944.54	11,580.65	16,055.78	11,838.25	4,217.53
<b>TOTAL</b>	<b>588,965.48</b>	<b>480,772.54</b>	<b>108,192.95</b>	<b>172,471.63</b>	<b>130,699.69</b>	<b>41,771.91</b>

Source: Department of Statistics, Malaysia

Note: Data for 2006 is preliminary. Data is subject to adjustments and revisions by DOS.



Source: Derived from data provided by Department of Statistics, Malaysia

## PENANG AIRPORT

### Aircraft Movement per annum, Jan-June 2007 ( Arrival )

Month	No. of Movement
January	1,293
February	1,143
March	1,351
April	1,541
May	1,618
June	1,572
<b>2007 (Jan-June)</b>	<b>8,518</b>

Source: Derived from series of Airport Statistics, Malaysia Airports Berhad

### Aircraft Movement per annum, Jan - June 2007 ( Departure )

Month	No. of Movement
January	1,267
February	1,141
March	1,353
April	1,543
May	1,614
June	1,573
<b>2007 (Jan-June)</b>	<b>8,511</b>

Source: Derived from series of Airport Statistics, Malaysia Airports Berhad

**Number of Passengers (Domestic & International) Jan-June 2007**

Month	No. of Passengers (millions)		
	Domestic	International	Total
January	116,609	115,952	232,561
February	102,574	97,677	200,251
March	135,224	122,427	257,651
April	133,107	119,127	252,234
May	134,631	125,194	259,825
June	142,338	129,800	272,138
<b>2007(Jan-June)</b>	<b>710,177</b>	<b>764,483</b>	<b>1,474,660</b>

Source: Derived from series of Airport Statistics, Malaysia Airports Berhad

**Cargo Handled (Domestic & International) Jan-June 2007**

Month	Cargo Handled (in '000 metric tones)		
	Domestic	International	Total
January	1,706,317	14,515,705	16,222,022
February	1,807,011	13,735,300	15,542,311
March	2,248,014	15,768,347	18,016,361
April	2,424,063	14,707,717	17,131,780
May	1,890,649	12,616,649	14,507,298
June	2,024,033	15,097,774	17,121,807
<b>2007(Jan-June)</b>	<b>12,100,087</b>	<b>86,441,492</b>	<b>98,541,579</b>

Source: Derived from series of Airport Statistics, Malaysia Airports Berhad.

**PENANG PORT****Annual Number of Ship calls, 1990 - 2006**

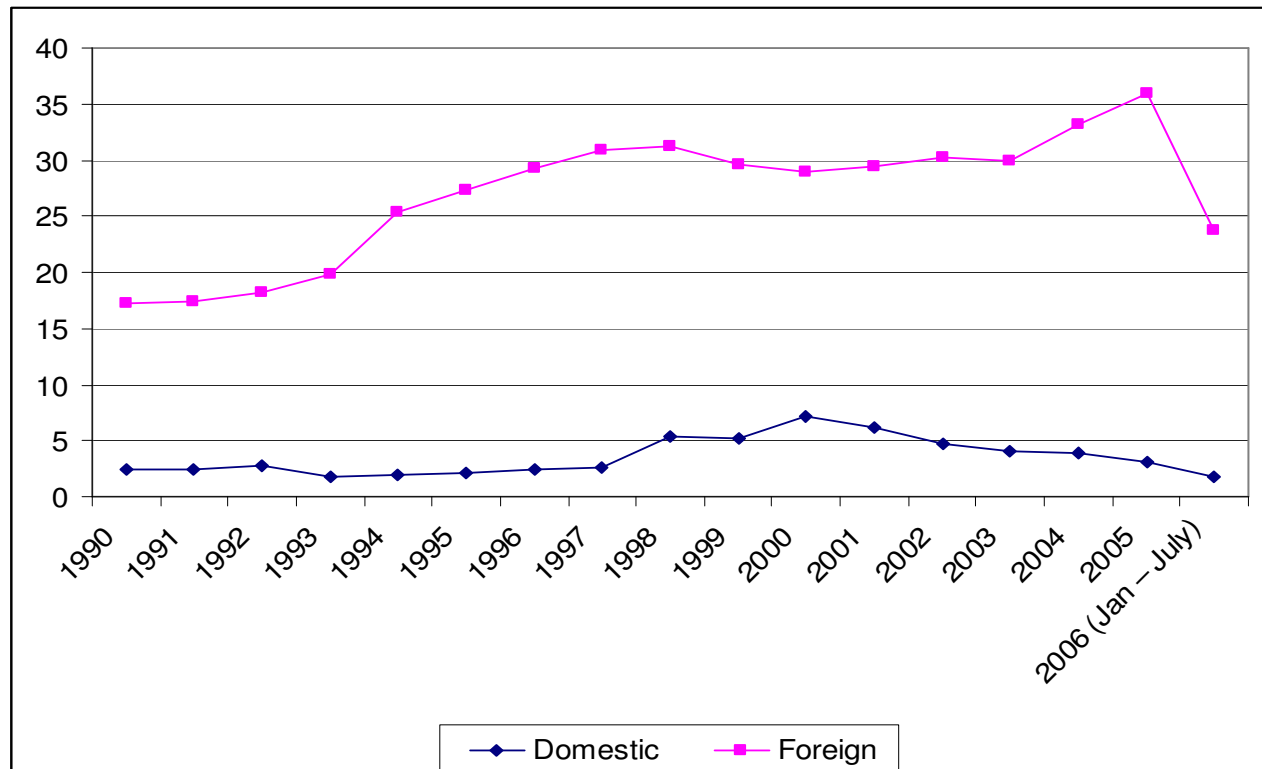
Year	Domestic	Foreign	Total
1990	2,437	3,091	5,528
1991	2,750	3,051	5,801
1992	3,058	3,208	6,266
1993	1,327	4,716	6,043
1994	1,379	4,820	6,199
1995	1,443	5,022	6,465
1996	1,416	5,117	6,533
1997	1,725	5,346	7,071
1998	2,553	5,072	7,625
1999	2,635	4,736	7,371
2000	3,250	4,013	7,263
2001	3,019	4,399	7,418
2002	2,824	4,748	7,572
2003	2,220	4,199	6,419
2004	3,182	3,831	7,013
2005	2,400	3,822	6,222
<b>2006 (Jan - July)</b>	<b>1,390</b>	<b>2,449</b>	<b>3,839</b>

Source: Derived from the statistics provided by Penang Port Sdn Bhd

**Gross Registered Tonnage (Domestic & Foreign) in Million, 1990 - 2006**

Year	Domestic	Foreign	Total
1990	2.38	14.78	17.16
1991	2.41	15.05	17.46
1992	2.81	15.33	18.14
1993	1.75	18.02	19.77
1994	1.95	23.40	25.35
1995	2.06	25.26	27.32
1996	2.43	26.76	29.19
1997	2.59	28.23	30.82
1998	5.29	25.93	31.22
1999	5.18	24.35	29.53
2000	7.09	21.87	28.96
2001	6.11	23.37	29.48
2002	4.72	25.58	30.29
2003	4.14	25.80	29.94
2004	3.95	29.16	33.10
2005	3.11	32.83	35.94
<b>2006 (Jan – July)</b>	<b>1.76</b>	<b>22.06</b>	<b>23.82</b>

Source: Derived from the statistics provided by Penang Port Sdn Bhd



Source: Derived from the statistics provided by Penang Port Sdn Bhd

**Type of Cargo Handled, 1990 - 2006**

Year	General Cargo	(million freight tonnes)			Total	Container
		Dry Bulk	Liquid Bulk	Containerised		
1990	2.21	2.06	2.73	3.85	10.85	222,441
1991	2.02	2.31	2.94	4.79	12.06	251,849
1992	1.99	2.46	3.14	5.63	13.22	303,367
1993	1.96	2.90	3.28	6.22	14.36	330,915
1994	1.93	2.60	3.31	7.29	15.14	386,182
1995	2.12	2.99	3.46	8.10	16.67	433,474
1996	2.11	3.20	3.52	8.67	17.50	454,765
1997	2.59	3.37	4.11	9.62	19.69	506,863
1998	1.67	2.23	3.86	8.69	16.45	510,307
1999	1.85	2.77	3.99	10.15	18.76	566,409
2000	1.84	3.46	4.11	11.06	20.47	635,423
2001	2.00	3.75	4.10	10.61	20.45	604,294
2002	2.07	4.00	4.39	11.34	21.80	634,042
2003	1.89	4.08	4.18	12.24	22.39	688,171
2004	1.81	3.73	4.38	13.50	23.42	772,024
2005	1.79	3.80	4.11	13.87	23.57	795,289
<b>2006 (As at Nov)</b>	<b>1.53</b>	<b>3.60</b>	<b>3.57</b>	<b>9.6</b>	<b>18.27</b>	<b>773,637</b>

Source: Derived from the statistics provided by Penang Port Sdn Bhd



## TOURISM

### Penang: Average Occupancy Rate, Number of Registered Guests and Estimated Total Visitor Arrivals, 2002 - 2006

	2002	2003	2004	2005	2006
Average Occupancy Rate	53.9%	49.8%	60.2%	60.2%	67.9%
Average Occupancy Rate for Beach Hotels	54.1%	46.7%	60.5%	55.0%	60.6%
Average Occupancy for City Hotels	53.8%	51.9%	60.0%	63.4%	71.9%
Estimated Total Visitor Arrivals for the State	3.42 mil	3.03 mil	3.52 mil	3.09 mil	3.08 mil
Estimated Domestic Share	47.9%	61.7%	56.6%	63.0%	62.5%
Estimated International Share	52.1%	38.3%	43.4%	37.0%	37.5%

Source: PDC Consultancy Sdn. Bhd. (Formerly known as DCT Consultancy Services Sdn. Bhd.) & SERI

\* It should be noted that the decline in visitor arrivals in general and international visitor arrivals in particular in 2006 compared to 2005 was partly due to the different basis of estimation for the two periods. Thus, the two sets of figures are deemed incompatible due to the different bases of estimation for the two periods.

## PROPERTY

### Penang: House Price Index, 1999-2006

Year	Indices				
	All House	Terraced	High-Rise	Detached	Semi-Detached
Weight (2000=100)	100.0	38.1	50.7	2.9	8.4
<b>1999</b>	97.8	99.3	98.7	95.5	93.2
<b>2000</b>	100.0	100.0	100.0	100.0	100.0
<b>2001</b>	102.9	102.9	108.7	85.5	93.2
<b>2002</b>	102.6	115.6	95.1	97.6	96.0
<b>2003</b>	115.5	118.3	124.7	95.3	91.4
<b>2004</b>	119.0	124.1	124.5	94.7	102.3
<b>2005</b>	123.6	129.7	127.8	98.6	108.3
<b>2006</b>	125.9	133.1	131.9	106.3	101.4

Source: The Malaysian House Price Index

### Penang: Number of Transactions by Price Range for the Principal Property Sub-Sectors, 2005 & 2006

Price Range (RM)	Year	Residential	Commercial	Industrial	Agricultural	Development	Others	Total
0 - 25,000	2005	504	44	1	224	319	8	1100
	2006	540	23	2	271	294	7	1137
25,001 - 50,000	2005	1747	206	2	149	303	12	2419
	2006	1095	56	6	187	249	5	1598
50,000 - 75,000	2005	2445	109	2	98	112	2	2768
	2006	2138	127	10	111	132	2	2520
75,001 - 100,000	2005	2665	105	7	98	107	4	2986
	2006	2340	108	3	97	123	3	2674
100,001 - 150,000	2005	3697	273	22	94	131	10	4227
	2006	3343	267	12	112	151	2	2875
150,001 - 200,000	2005	2404	292	44	71	114	3	2928
	2006	2112	271	33	96	100	2	2614
200,001 - 250,000	2005	1486	362	50	45	88	4	2035
	2006	1184	271	31	33	60	2	1581
250,001 - 500,000	2005	2330	761	243	107	256	10	3707
	2006	2001	655	248	99	238	4	3245
500,001 - 1,000,000	2005	621	264	97	42	164	8	1196
	2006	555	227	100	58	161	2	1103
1,000,001 & Above	2005	112	65	62	22	211	2	474
	2006	133	67	73	26	234	3	530
<b>Total</b>	<b>2005</b>	<b>18011</b>	<b>2481</b>	<b>530</b>	<b>950</b>	<b>1805</b>	<b>63</b>	<b>23840</b>
	<b>2006</b>	<b>15439</b>	<b>2056</b>	<b>518</b>	<b>1090</b>	<b>1742</b>	<b>32</b>	<b>20877</b>

Source: Jabatan Penilaian dan Perkhidmatan Harta

### Penang: Value of Transactions by Price Range for the Principal Property Sub-Sectors, 2005 & 2006 (in RM million)

Price Range (RM)	Year	Residential	Commercial	Industrial	Agricultural	Development	Others	Total
0 - 25,000	2005	10.94	0.77	0.02	2.90	4.07	0.12	18.82
	2006	11.32	0.40	0.03	3.37	3.98	0.07	19.17
25,001 - 50,000	2005	67.98	8.51	0.08	5.69	11.52	0.41	94.19
	2006	44.68	2.34	0.21	6.99	9.00	0.17	63.40
50,000 - 75,000	2005	159.16	7.01	0.12	6.18	6.98	0.14	179.59
	2006	139.50	8.03	0.64	7.01	8.18	0.13	163.47
75,001 - 100,000	2005	234.86	9.27	0.63	8.76	9.56	0.34	263.43
	2006	205.17	9.72	0.29	8.50	10.87	0.25	234.80
100,001 - 150,000	2005	467.53	35.54	2.92	11.68	16.31	1.31	535.28
	2006	424.75	33.28	1.58	14.26	18.53	0.29	492.70
150,001 - 200,000	2005	417.93	52.45	8.01	12.46	19.90	0.54	511.29
	2006	367.40	48.62	5.96	17.00	17.64	0.35	456.97
200,001 - 250,000	2005	336.51	82.90	11.48	10.19	20.05	0.91	562.03
	2006	268.58	61.66	7.21	7.58	13.69	0.45	359.17
250,001 - 500,000	2005	800.78	266.83	84.57	36.03	92.24	3.87	1284.32
	2006	693.52	224.19	86.81	35.35	85.88	1.32	1127.07
500,001 - 1,000,000	2005	415.92	171.71	66.58	27.91	117.75	5.22	805.09
	2006	369.11	150.76	63.49	41.70	115.60	1.45	742.12
1,000,001 & Above	2005	190.34	147.20	213.85	39.65	750.75	6.24	1348.03
	2006	216.18	257.03	266.74	55.07	1031.33	4.32	1830.66
<b>Total</b>	<b>2005</b>	<b>3101.96</b>	<b>782.19</b>	<b>388.26</b>	<b>161.46</b>	<b>1049.13</b>	<b>19.10</b>	<b>5502.09</b>
	<b>2006</b>	<b>2740.21</b>	<b>796.04</b>	<b>432.94</b>	<b>196.83</b>	<b>1314.69</b>	<b>8.81</b>	<b>5489.54</b>

Source: Jabatan Penilaian dan Perkhidmatan Harta

## EDUCATION

### Penang: Number of Schools, Students & Teachers at the Primary Level, June 2007

Type of School	No. of Schools	No. of Students	No. of Teachers
<b>SK/SRK</b>	142	95745	5880
<b>SJK (C)</b>	90	57723	3013
<b>SJK (T)</b>	28	6547	433
<b>SK Khas</b>	3	555	101
<b>Total</b>	<b>263</b>	<b>160570</b>	<b>9427</b>

Source: Jabatan Pendidikan Negeri, Pulau Pinang

### Penang: Number of Schools, Students & Teachers at the Secondary Level, June 2007

Type of School	No. of Schools	No. of Students	No. of Teachers
<b>SM (Asrama Penuh)</b>	1	669	68
<b>SM Khas</b>	1	164	47
<b>SJM Vokasional &amp; Teknik</b>	6	3731	445
<b>SM Agama</b>	4	2634	236
<b>SM Harian</b>	97	108446	6771
<b>Total</b>	<b>109</b>	<b>115644</b>	<b>7567</b>

Source: Jabatan Pendidikan Negeri, Pulau Pinang

### Penang: Number of Schools, Students & Teachers at Pre –School Level, June 2007

Type of School	No. of Schools	No. of Students	No. of Teachers
<b>Public</b>	205	4830	205
<b>Private</b>	-	-	-
<b>Total</b>	<b>205</b>	<b>4830</b>	<b>205</b>

Source: Jabatan Pendidikan Negeri, Pulau Pinang

## HEALTH

### Penang: Ratio of Medical Professionals – Population As, 2007

Professional / Year	Total	Ratio
Medical Officer	1498	1:996
Dental Officer	194	1:7693
Nurse	2859	1:522

Source: Penang State Health Department

### Penang: Health Facilities April-May, 2007

	April-May
Government Hospital	6
Private Hospital	16
Private Maternity Home	8
Hospice	2
Mother & Child Health Care**	6
Health Centre*	26
Rural Clinics	62

\* Inclusive of Polyclinic & Hospitals' Outpatient Department

\*\* Inclusive of MCH Clinic located in Health Clinic Building

Source: Penang State Health Department

### Penang: Number of Beds, Bed Occupancy Rate (BOR) & Average Length of Stay (ALOS) for Government Hospitals, April - May 2007

Hospital	April - May 2007				
	Beds	BOR (%)		ALOS (%)	
		April	May	April	May
Hospital Pulau Pinang	1090	72.56	75.16	5.21	5.08
RHSP (Hospital Seberang Jaya)	314	92.45	93.56	3.19	3.16
RHSP (Hospital Bukit Mertajam)	242	45.80	47.65	3.25	3.16
Hospital Sungai Bakap	105	51.46	45.68	2.95	2.81
Hospital Balik Pulau	108	71.60	75.65	6.22	7.97
Hospital Kepala Batas	71	68.06	72.16	3.94	4.45

Source: Penang State Health Department

### Penang: HIV/AIDS , April - May, 2007

	Death	Identified
HIV	0	98
AIDS	12	21

Source: Penang State Health Department

## SELECTED NATIONAL STATISTICS

### Malaysia: Gross Domestic Product by Sector

Component	RM Million				
	Q1/06	Q2/06	Q3/06	Q4/06	Q1/07
National Accounts (GDP) at Current Prices	129,499	133,815	141,360	140,906	144,064
Agriculture, Forestry and Fishing	11,270	12,183	13,787	12,710	13,543
Mining and Quarrying	21,252	21,060	22,970	20,963	18,747
Manufacturing	39,888	41,189	42,419	43,398	41,983
Electricity, Gas and Water	3,666	3,947	4,054	3,953	3,879
Construction	3,523	3,895	3,880	3,903	3,893
Wholesale and Retail Trade, Hotel and Restaurants	16,882	17,040	18,292	18,675	18,436
Transport, storage and Communication	8,274	8,459	8,770	8,892	10,176
Finance, Insurance, real estate and business services	13,782	14,780	15,192	15,556	19,683
Other Services	7,598	7,772	7,952	8,082	7,420
Government Services	8,454	9,003	9,581	10,146	9,548
Less : Imputed bank service charges	6,529	6,925	7,006	6,727	4,685
Plus : import duties	1,438	1,414	1,471	1,355	1,444
National Accounts (GDP) at 2000 price	66,348	68,212	70,743	71,921	119,845
Agriculture, Forestry and Fishing	5,335	5,762	6,163	5,760	8,963
Mining and Quarrying	4,444	4,091	4,400	4,562	10,417
Manufacturing	21,440	22,099	22,397	22,604	36,255
Electricity, Gas and Water	2,734	2,861	2,940	2,866	3,636
Construction	1,646	1,820	1,811	1,820	3,511
Wholesale and Retail Trade, Hotel and Restaurants	9,766	9,810	10,422	10,729	16,470
Transport, storage and Communication	5,930	6,019	6,217	6,336	9,128
Finance, Insurance, real estate and business services	10,141	10,751	10,960	11,283	19,170
Other Services	5,182	5,268	5,366	5,438	6,921
Government Services	4,773	5,083	5,394	5,713	8,324
Less : Imputed bank service charges	6,147	6,423	6,431	6,213	4,835
Plus : import duties	1,105	1,071	1,104	1,026	1,344

Source: Bank Negara Malaysia

Note: Data is subject to adjustments and revisions by Bank Negara Malaysia

### Malaysia: Exchange Rates

Period (RM as at)	USD	GBP	EUR	AUD	JPY100	SGD
30 Mar '07	3.4560	6.7867	4.6105	2.7912	2.930	2.2781

Source: Currency Converter, <http://www.bnm.gov.my/index.php>, Bank Negara Malaysia

### Malaysia: National Indices & Employment Data

Unit Description	Latest Period	Latest Data	Previous Period	
Industrial Production Index	2000=100	Jun/07	136.5	137.0
Employment	(million persons)	Q1/07	10.461	10.408
Employment	% of labour force	Q1/07	96.6	97.0
Unemployment	(million persons)	Q1/07	0.365	0.319
Unemployment	% of labour force	Q1/07	3.4	3.0
Average salaries and wages per employee in manufacturing sector	RM per month	Jun/07	1,798.5	1,777.1
Consumer Price Index	2005=100	Jul/07	105.7	105.3
Producer Price Index	1989=100	Jun/07	132.5	132.6

Source: Bank Negara Malaysia

## Malaysia: Federal Government Accounts

Component	RM Million	
	2004	2005
Public Sector Operations		
General Government		
Revenue	95,034	94,961
Operating Expenditure	101,026	106,633
NPFE's Operating Surplus	81,252	84,973
Public Sector Current Account	75,260	73,301
Net Development Expenditure	56,716	64,451
Public Sector Overall Balance	18,544	8,850
Domestic Financing	-16,578	2,376
Bank	-40,045	-8,226
Non-Bank	23,467	10,602
Foreign Borrowing	-1,966	-11,226

Source: Bank Negara Malaysia

## Malaysia: Producer Price Index

1989 = 100

Section	Weights	2005	January - February Average		
			2005	2006	% Change
Food & Live Animals Chiefly for Food	14.88	141.1	140.0	141.8	1.3
Beverages and Tobacco	2.08	170.6	169.9	172.0	1.2
Crude Materials, Inedible Except Fuels	17.96	137.0	132.4	146.6	10.7
Mineral Fuel / Lubricants & Related Materials	18.82	274.4	230.8	311.1	34.8
Animal & Vegetable Oils & Fats	8.47	172.7	167.1	173.3	3.7
Chemicals & Related Products N.E.S.	4.42	127.3	127.0	125.1	-1.5
Manufactured Goods Classified Chiefly by Material	10.82	128.6	128.1	128.7	0.5
Machinery & Transport Equipment	18.35	110.9	110.5	110.6	0.1
Miscellaneous Manufactured Articles	3.61	131.8	130.6	132.6	1.5
Commodities & Transactions N.E.C. in the S.I.T.C.	0.59	130.1	130.1	130.6	0.4
<b>Total</b>	<b>100.00</b>	<b>160.8</b>	<b>150.9</b>	<b>169.5</b>	<b>12.3</b>

Source: The Malaysian Economy in Brief, March 2006, Department of Statistics, Malaysia

## Malaysia: Consumer Price Index

2005=100

Period	All groups	Food & non-alcoholic beverages	Alcoholic beverages & tobacco	Clothing & footwear	Housing, water, electricity, gas & other fuels	Furnishings, household equipment & routine	Health	Transport	Communication	Recreation services and culture	Education	Restaurant & hotels	Miscellaneous goods and services
<b>2003</b>	93.4	99.3	100.8	96.9	95.0	97.4	93.4	99.3	100.8	96.9	95.0	97.4	93.4
<b>2004</b>	94.1	100.0	99.9	98.2	96.6	98.7	94.1	100.0	99.9	98.2	96.6	98.7	94.1
<b>2005</b>	100.0	100.0	100.0	100.0	100.0	100.0	100.0	100.0	100.0	100.0	100.0	100.0	100.0
<b>2006</b>													
Jan	101.8	102.8	105.1	98.8	100.5	100.7	101.4	103.6	99.5	100.4	100.8	102.3	101.3
Feb	101.9	102.6	105.2	99.8	100.7	100.8	101.6	103.6	99.4	100.8	101.1	102.5	101.7
Mar	103.4	102.3	105.2	98.6	101.2	100.8	101.6	113.2	99.2	100.7	101.2	102.9	101.5
Apr	103.4	102.3	105.2	99.6	101.2	101.0	101.7	112.2	98.9	100.7	101.3	103.2	102.0
May	103.6	102.9	105.3	99.4	101.4	101.0	101.9	112.2	98.7	100.7	101.3	103.5	103.2
June	103.8	103.3	105.3	98.8	101.7	101.1	102.0	112.3	98.5	100.7	101.6	103.8	102.6
July	104.0	103.7	105.4	99.3	101.7	101.2	102.3	112.3	98.4	100.9	101.7	104.0	102.5
Aug	103.9	103.5	105.4	97.9	101.9	101.1	102.4	112.4	98.3	100.8	101.9	104.2	102.6
Sept	104.1	103.6	110.3	98.9	101.9	101.3	102.6	112.5	98.2	100.8	102.0	104.3	102.6
Oct	104.1	103.9	110.3	97.4	101.9	101.4	102.6	112.5	98.1	100.8	102.0	104.3	102.0
Nov	104.4	104.5	110.3	98.5	102.1	101.5	102.8	112.5	98.0	100.8	102.1	104.5	102.4
Dec	104.6	105.0	11.4	97.2	102.2	101.5	102.9	112.5	97.9	100.7	102.5	104.7	102.5
<b>2007</b>													
Jan	105.1	106.0	110.3	98.3	102.2	101.8	103.1	113.2	97.8	100.8	103.1	105.0	102.4
Feb	105.9	110.3	97.2	102.5	101.7	103.2	113.2	97.7	100.9	103.2	104.9	102.6	105.9
Mar	105.4	110.3	97.5	102.5	102.0	103.2	113.4	97.6	100.7	103.3	105.4	102.6	105.4

Note: Data from 2003 – 2007 refers to Consumer Price Index (2005=100) for Malaysia.

Source: Department of Statistics, Malaysia

## Malaysia: Index of Industrial Production

2000 = 100

Period	All Divisions	Mining	Electricity	Manufacturing	Export-Oriented Industries	Domestic-oriented Industries					
Weight	100.0	23.37	5.96	70.67	0.80	0.20					
<b>2000</b>	100.0	100.0	100.0	100.0	100.0	100.0					
<b>2001</b>	96.7	103.1	108.7	93.5	91.3	102.5					
<b>2002</b>	101.2	104.9	119.9	98.4	95.7	109.0					
<b>2003</b>	110.5	110.5	126.8	109.1	107.9	114.0					
<b>2004</b>	122.5	117.0	137.2	123.0	123.8	119.9					
<b>2005</b>	127.5	117.6	145.1	129.3	130.8	123.2					
<b>2006</b>											
Jan	130.2	120.5	142.7	132.4	135.1	121.8					
Feb	123.8	108.7	138.9	127.5	130.1	117.2					
Mar	138.9	121.6	158.2	142.9	146.0	130.7					
Apr	130.3	110.7	152.3	135.0	137.3	125.8					
May	133.1	103.9	155.0	140.9	142.1	136.2					
June	135.4	108.8	152.2	142.7	144.1	137.4					
July	136.8	114.4	158.8	142.3	143.2	138.6					
Aug	138.2	114.4	159.0	144.3	145.1	141.3					
Sept	136.0	111.3	154.3	142.6	142.9	141.4					
Oct	132.3	120.3	149.0	134.8	136.3	129.0					
Nov	136.6	115.7	154.3	142.0	143.3	136.6					
Dec	137.5	121.2	155.3	141.3	143.4	133.1					
<b>2007</b>											
Jan	132.5	117.2	154.3	135.7	137.8	127.8					
Feb	123.0	105.6	139.2	127.4	129.2	120.3					
<b>Export-Oriented Industries</b>											
Period	Total	Electronic & Electrical	Of Which		Chemicals & Chemical Products	Petroleum Products	Textiles & Wearing Apparel	Wood & Wood Products	Rubber Products	Off-Estate Processing	Others
			Electronics	Electricals							
<b>2006</b>											
Jan	135.1	133.2	155.0	90.6	154.7	162.0	86.7	112.5	123.3	101.6	96.3
Feb	130.1	132.9	148.8	101.9	137.3	149.3	80.6	99.4	127.7	112.7	94.5
Mar	146.0	150.4	172.4	107.4	144.7	171.0	86.3	114.8	143.6	133.0	121.1
Apr	137.3	137.2	157.2	98.1	148.6	150.5	85.8	109.7	147.5	138.1	118.9
May	142.1	137.6	155.8	102.0	163.8	154.4	105.9	117.8	144.2	145.0	126.8
Jun	144.1	145.4	167.8	101.6	160.2	154.6	90.1	112.1	140.5	138.2	129.6
July	143.2	141.7	166.4	93.4	160.4	157.6	89.4	113.3	148.5	145.0	129.1
Aug	145.6	142.1	166.1	95.4	165.0	159.6	92.4	119.4	150.2	158.4	129.4
Sept	142.9	143.6	165.1	101.8	148.8	153.1	88.7	119.4	149.9	164.3	132.1
Oct	136.3	127.6	146.7	90.4	155.7	170.3	79.5	116.2	142.6	144.0	120.9
Nov	143.3	139.4	158.8	101.7	154.0	167.4	97.2	116.1	151.0	157.8	120.3
Dec	143.4	141.4	163.6	98.0	153.3	176.6	86.2	121.2	147.5	121.6	109.9
<b>2007</b>											
Jan	137.8	132.1	152.2	92.9	158.5	165.2	78.1	110.7	163.2	119.3	115.5
Feb	129.2	122.9	141.6	86.4	148.9	159.4	75.2	108.7	146.5	106.3	110.5



Period	Domestic-Oriented Industries								
	Total	Non-metallic Mineral Products	Iron and steel	Food Manufacturing	Transport Equipment	Fabricated Metal Products	Paper Products	Beverages	Tobacco Products
<b>2006</b>									
Jan	121.8	109.0	96.3	119.4	162.6	121.9	119.0	155.2	81.0
Feb	117.2	100.3	92.7	119.1	146.4	131.3	120.9	120.8	74.3
Mar	130.7	115.6	106.1	132.8	161.6	156.0	120.5	86.0	98.7
Apr	125.8	113.7	102.1	129.9	154.7	148.5	111.6	88.5	80.1
May	136.2	120.0	109.1	136.0	156.2	172.1	144.1	83.7	81.9
Jun	137.4	118.9	114.6	144.6	156.0	159.6	146.1	109.5	95.7
July	138.6	123.0	112.2	147.9	149.7	162.1	145.8	130.4	96.2
Aug	140.6	121.1	111.5	159.9	147.9	166.6	145.4	126.8	95.9
Sept	141.4	125.3	112.9	153.3	154.4	169.4	144.8	116.5	78.5
Oct	129.0	117.6	109.5	134.5	130.8	160.4	139.0	96.9	58.0
Nov	136.6	120.0	130.0	140.5	137.5	165.4	142.9	126.4	79.7
Dec	133.1	117.8	125.1	140.2	128.6	166.8	134.6	117.7	77.2
<b>2007</b>									
Jan	127.8	109.1	111.9	142.5	112.8	161.2	139.5	141.2	88.7
Feb	120.3	99.1	102.2	134.3	109.7	158.1	139.2	101.2	72.2

Source: Department of Statistics, Malaysia

Note: Under the new Industrial Production Index (2000=100), LNG processing has been reclassified as petroleum products (previously classified as chemicals and chemical products). Petroleum products have now been categorized under export-oriented industries (previously: domestic-oriented industries).