

# Penang Statistics

## Quarter 1, 2007



Submitted to the Penang State Government  
by  
Socio-Economic & Environmental Research Institute  
10 Brown Road, 10350 Penang  
Tel: (04) 228 3306 Fax: 226 7042  
E-mail: seripg@tm.net.my  
Website: <http://www.seri.com.my>

**CONTENTS**

<b>PHYSICAL ATTRIBUTES</b>	
Area, Location & Climate	3
<b>DEMOGRAPHY</b>	
Penang: Estimated Population (in '000) and Distribution by Districts	3
Penang: Estimated Population by Sex (in '000)	3
Penang: Estimated Population by Ethnic Group (in '000)	4
<b>ECONOMIC</b>	
Penang: Growth Rate of Gross Regional Product (In 1987 – Constant Prices)	5
<b>EMPLOYMENT</b>	
Penang: Percentage of Employed Persons by Industry (%), 2001 – 2005	5
<b>PRIMARY SECTOR</b>	
<b>AGRICULTURE</b>	
Penang: Agriculture Land use by Crops (In Hectares), 2001-2005	6
<b>LIVESTOCK</b>	
Penang: Livestock Production, 2001 - 2005	6
Penang: Production and Value of Livestock, 2004 - 2005	7
<b>FISHERIES</b>	
Penang: Landings of Marine Fish, 1995 - 2006	7
<b>SECONDARY SECTOR</b>	
<b>MANUFACTURING</b>	
Penang: Approved Projects by Locations, January – March 2007	8
Penang: Approved Manufacturing Projects By Industry, January – March 2007	9
Approved Manufacturing Projects And Investment By State, January – March, 2007	9
<b>TERTIARY SECTOR</b>	
<b>UTILITIES</b>	
<b>WATER</b>	
Penang: Water Output And Consumption ('000) cubic metres), 1991 - 2006	10
Penang: Daily Water Supply, 2005 - 2006	11
<b>ELECTRICITY</b>	
Penang: Electricity Supplied and Consumed	11
Penang: Power Demand & Supply, 2000 - 2010	11
<b>TELECOMMUNICATIONS</b>	
Direct Exchange Line (DEL) Penetration Rate by State, 2003 - 2005	12
Internet Dial-Up Penetration Rate by State, 2003 - 2005	13
Percentage Share of Hand Phone Subscriber Base, 2005	14
Number of Hotspot Locations by State, 2005 - 2006	15
<b>TRANSPORT</b>	
<b>ROAD TRANSPORT</b>	
New Motor Vehicle Registration, 2006	16
Motor Vehicle Re-registration, 2006	16
<b>TRADE</b>	
<b>TRADE BALANCE</b>	
Export, Import & Balance of Trade, 2005 - 2006 (RM million)	17

**AIRPORT**

Aircraft Movement per annum, 1991 - 2006	18
Number of Passengers (Domestic & International) per annum, 1991 - 2006	18
Cargo Handled (Domestic & International) per annum, 1991 - 2006	19

**PORT**

Annual Number of Shipcalls, 1990 – 2006	21
Gross Registered Tonnage (Domestic & Foreign), 1990 – 2006	21
Type of Cargo Handled, 1990 – 2006	22

**TOURISM**

Penang: Average Occupancy Rate, Number of Registered Guests and Estimated Total Visitor Arrivals, 2001 – 2005	23
---	----

**PROPERTY**

Penang: House Price Index, 1988 - 2003	23
Penang: Number of Transactions by Price Range for the Principal Property Sub-Sectors, 2004 & 2005	23
Penang: Value of Transactions by Price Range for the Principal Property Sub-Sectors, 2004 & 2005 (in RM million)	24

**EDUCATION**

Penang: Number of Schools, Students & Teachers At The Primary Level, Jan 2005	25
Penang: Number of Schools, Students & Teachers At The Secondary Level, Jan 2005	25
Penang: Number of Students Taking Public Exams and Passing Rates, 2004 - 2005	25
Penang: Number of Private Education Institutions (as of 31 December 2004)	25

**HEALTH**

Penang: Ratio of Medical Professionals-Population As , 2007	
Penang: Health Facilities, January – March, 2007	25
Penang: Number of Beds, Bed Occupancy Rate (BOR) & Average Length of Stay (ALOS) for Government Hospitals, June 200	27
Penang: HIV / AIDS (Total Identified Cases), 1999 – 2006	27

**SELECTED NATIONAL STATISTICS**

Malaysia: Gross Domestic Product by Sector (Current Prices & 1987 Prices)	28
Malaysia: Currency Exchange Rates	28
Malaysia: National Indices & Employment Data	28
Malaysia: Federal Government Accounts	29
Malaysia: Producer Price Index	29
Malaysia: Consumer Price Index	30
Malaysia: Index of Industrial Production	31

*Disclaimer :*

*All data are correct at the time of publication and are subject to adjustments and revision by the respective sources. The Socio-economic & Environmental Research Institute (SERI) will not be responsible for any loss or damage caused by the usage of any information obtained from this publication.*

## PHYSICAL ATTRIBUTES

### Area:

<b>State of Penang</b>	<b>1,030 sq km</b>
Timur Laut	119 sq km
Barat Daya	173 sq km
Seberang Perai Utara	262 sq km
Seberang Perai Tengah	235 sq km
Seberang Perai Selatan	241 sq km

### Location:

Latitudes	5°8' - 5°35'
Longitudes	100°8' - 100°32'

## DEMOGRAPHY

### Penang: Estimated Population (in '000) and Distribution by Districts

District	1991	2000	2004	2005	2006
	(census)	(census)	(estimate)	(estimate)	(estimate)
Timur Laut	395.7	444.9	476.2	483.0	486.6
Barat Daya	122.8	169.4	191.3	195.5	201.5
Seberang Perai Utara	224.6	259.8	283.4	288.0	292.8
Seberang Perai Tengah	236.3	313.6	348.8	356.0	362.4
Seberang Perai Selatan	84.8	125.7	143.1	146.3	149.1
<b>State of Penang</b>	<b>1,064.2</b>	<b>1,313.4</b>	<b>1,442.8</b>	<b>1,468.8</b>	<b>1,492.4</b>

Source: State Population Report, Penang, 1991, Department of Statistics (DOS), Malaysia; Population and Housing Census of Malaysia 2000: Population Distribution and Basic Demographic Characteristics, DOS, Malaysia; DOS, Penang.

Note: Slight discrepancies may occur due to rounding.

### Penang: Estimated Population by Sex (in '000)

Gender	1991	2000	2004	2005	2006
	(census)	(census)	(estimate)	(estimate)	(estimate)
Male	526.0	654.1	715.2	727.3	738.2
Female	538.1	659.4	727.6	741.5	754.2
<b>Total</b>	<b>1,064.2</b>	<b>1,313.4</b>	<b>1,442.8</b>	<b>1,468.8</b>	<b>1,492.4</b>

Source: State Population Report, Penang, 1991, DOS, Malaysia; Population and Housing Census of Malaysia 2000: Population Distribution and Basic Demographic Characteristics, DOS, Malaysia; DOS, Malaysia; DOS, Penang.

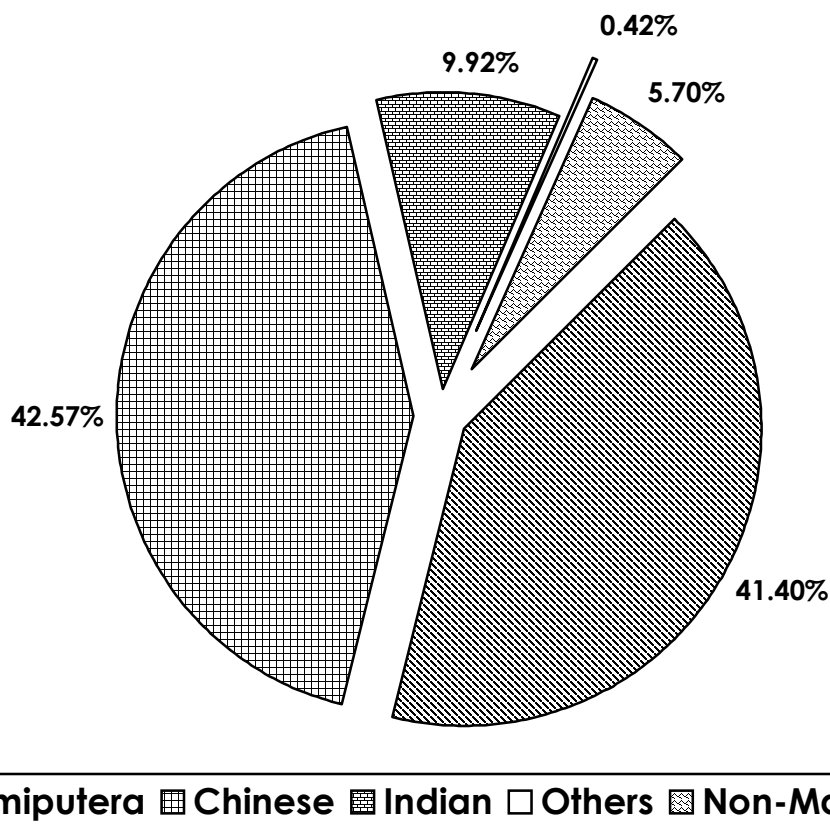
Note: Slight discrepancies may occur due to rounding.

**Penang: Estimated Population by Ethnic Group (in '000)**

Ethnic Group	1991	2000	2004	2005	2006
	(census)	(census)	(estimate)	(estimate)	(estimate)
Malaysian:	1,048.3	1,265.1	1,370.1	1390.6	1,407.4
Malays	405.4	533.1	587.3	600.3	612.3
Other Bumiputera	1.1	3.9	5.0	5.3	5.6
Chinese	523.2	588.7	626.4	631.8	635.3
Indians	112.8	133.9	145.4	147.1	148.0
Others	5.8	5.4	6.0	6.1	6.2
Non-Malaysian Citizens	15.9	48.4	72.7	78.2	85.0
<b>Total</b>	<b>1,064.2</b>	<b>1,313.4</b>	<b>1,442.8</b>	<b>1,468.8</b>	<b>1,492.4</b>

Source: State Population Report, Penang, 1991, DOS, Malaysia; Population and Housing Census of Malaysia 2000: Population Distribution and Basic Demographic Characteristics, DOS, Malaysia; DOS, Penang.  
 Note: Slight discrepancies may occur due to rounding.

**Population By Ethnic Group, 2006**



Source: Department Of Statistics, Penang

## ECONOMIC

### Penang: Growth Rate of Gross Regional Product (In 1987 – Constant Prices)

(RM Million)	2001	2002	2003	2004	2005
Agriculture, forestry, fishing	2.1	4.9	4.7	5.7	4.5
Mining & Quarrying	0.3	0.2	-3.0	-6.8	-0.5
Manufacturing	-4.2	6.1	7.2	9.7	6.5
Construction	-1.4	-4.0	2.6	-10.7	-1.1
Tertiary	2.3	5.7	4.4	7.5	7.3
<b>Total</b>	<b>-0.6</b>	<b>5.6</b>	<b>5.4</b>	<b>7.9</b>	<b>6.7</b>

Source: SERI

Note: Please note that SERI has revised the previous GDP growth estimates. The release of the State GRP figures in the 9<sup>th</sup> Malaysia Plan (9MP) as compiled by the Economic Planning Unit (EPU) provides SERI with a point of reference for its GRP projections for the State. SERI's estimates of GRP are compiled and projected based on data available at the State level. To a large extent, it is dependent upon the cooperation of both public and private sectors in voluntary and timely disclosure and reporting of data.

## EMPLOYMENT

### Penang: Percentage of Employed Persons by Industry (%), 2001 - 2005

Industry	2001	2002	2003	2004	2005
Agriculture, hunting and forestry	1.5	1.8	1.2	2.4	1.9
Fishing	0.7	0.6	0.8	1.5	0.7
Mining and quarrying	0.2	0.0	0.1	0.1	0.1
Manufacturing	40.8	40.4	37.1	37.7	36.2
Electricity, gas and water supply	0.5	0.4	0.5	0.4	0.6
Construction	6.4	7.0	6.6	7.1	6.8
Wholesale and retail trade; repair of motor vehicles, motorcycles and personal and household goods	15.6	16.0	16.4	15.0	15.2
Hotels and restaurants	7.4	6.8	8.6	8.2	7.7
Transport, storage and communication	4.7	5.3	5.3	5.5	5.7
Financial intermediation	2.3	2.6	2.3	2.2	2.2
Real estate, renting and business activities	4.4	4.3	4.5	4.2	3.8
Public administration and defense; compulsory social security	4.2	3.9	4.2	3.5	5.5
Education	4.2	4.2	4.7	5.0	5.2
Health and social work	2.8	2.6	2.6	1.9	2.9
Other community, social and personal service	2.0	1.9	2.1	2.2	2.7
Private households with employed persons	2.4	2.3	2.9	3.1	2.9
Extra-territorial organisations and bodies	0.0	0.0	0.0	0.0	0.0
<b>Total</b>	<b>100.0</b>	<b>100.0</b>	<b>100.0</b>	<b>100.0</b>	<b>100.0</b>

Source: Labour Force Survey, DOS, Malaysia

Note: Slight discrepancies may occur due to rounding.

## PRIMARY SECTOR

### AGRICULTURE

**Penang: Agriculture Landuse by Crops (hectares), 2001-2005**

Type	Year				
	2001	2002	2003	2004	2005
Rubber	12,758	12,758	12,758	11,765	11,177
Oil Palm	14,821	13,725	14,329	13,868	14,074
Paddy	13,448	13,448	13,448	12,782	12,782
Coconut	2,339	2,309	2,313	2,175	2,119
Cocoa	104	75	75	61	58
Vegetables	458	423	404	460	481
Fruits	6,830	6,760	6,802	6,872	6,668
Cloves	190	196	148	163	169
Nutmeg	75	70	38	-	-
Cash Crops	247	190	242	309	235
Others	74	55	21	58	56
<b>Total</b>	<b>51,344</b>	<b>50,009</b>	<b>50,578</b>	<b>48,513</b>	<b>47,819</b>

Source: Derived from data from the Jabatan Pertanian Negeri Pulau Pinang, MPOB and RISDA

Note: Slight discrepancies may occur due to rounding.

## LIVESTOCK

**Penang: Livestock Production, 2001-2005**

Type	Year				
	2001	2002	2003	2004	2005
Meat ('000 Metric Tons)					
Cattle & Buffalo	1.10	1.01	0.99	0.91	0.78
Goat & Sheep	0.04	0.03	0.03	0.02	0.02
Chicken & Ducks	48.67	50.70	73.86	50.00	64.30
<b>Total</b>	<b>49.81</b>	<b>51.74</b>	<b>74.88</b>	<b>50.93</b>	<b>65.1</b>

Source: Department of Veterinary Services, Penang

**Penang: Production and Value of Livestock, 2004 – 2005**

Commodity	2004			2005		
	Production (Metric Tonnes)	Value (RM Million)	%	Production (Metric Tonnes)	Value (RM Million)	%
<b>Meat</b>						
Cow	848.94	10.10	2.41	731.00	8.7	1.84
Buffalo	57.69	0.69	0.16	37.44	0.45	0.09
Goat / Lamb	21.82	0.26	0.06	15.35	0.18	0.04
Pig	18,176.50	99.06	23.67	16,936.27	92.3	19.51
Chicken	49,583.88	228.09	54.50	64,283.26	295.7	62.50
Duck	414.57	2.01	0.48	2,437.31	11.82	2.50
Quail	12.07	0.11	0.03	69.6	0.61	0.13
Rabbit	1.60	0.02	0.00	0.00	0.00	0.00
<b>Eggs</b> (No. of eggs)						
Chicken	284,998,820	71.25	17.03	294,412,860	58.88	12.45
Duck	10,848,000	4.34	1.04	16,440,000	4.11	0.87
Quail	20,120,000	2.21	0.53	0	0.00	0.00
<b>Milk</b> (Liter)						
Fresh milk	455,440	0.34	0.08	455,440	0.34	0.07
	<b>Total</b>	418.48	100.00	<b>Total</b>	473.10	100.00

Source: Livestock Survey 2003 & 2004, Department of Veterinary Services, Penang

**FISHERIES****Penang: Landings of Marine Fish, 2007**

Month	Quantity ('000 tonnes)	Value (RM million)
<b>January</b>	2,503.41	13,412,277.47
<b>February</b>	2,710.09	14,716,104.54
<b>March</b>	2,684.77	14,262,055.98
<b>Total</b>	<b>7,898.27</b>	<b>42,390,436.99</b>

Source: Department of Fisheries, Penang



## SECONDARY SECTOR MANUFACTURING

### Penang: Approved Manufacturing Projects by Locations, January – March, 2007

Location	TOTAL Number	Employment	Domestic Investment (RM)	Foreign Investment (RM)	Total Capital Investment (RM)
Prai IE	4	1,956	7,786,002	60,138,498	67,924,500
Prai FTZ	1	10	0	4,570,000	4,570,000
Mak Mandin IE	1	18	2,306,000	0	2,306,000
Butterworth	3	75	3,746,100	0	3,746,100
Bayan Lepas Ph I FTZ	3	13	0	30,880,000	30,880,000
Other Areas	3	190	23,959,633	47,000	24,006,633
Bayan Lepas Ph IV FTZ	1	24	622,400	0	622,400
Bayan Lepas	3	35	1,489,000	1,791,200	3,280,200
Bukit Mertajam	4	237	21,346,600	0	21,346,600
Bukit Minyak S.Prai Tengah	2	275	13,991,385	0	13,991,385
Jelutong	1	24	2,300,000	0	2,300,000
Teluk Kumbar	1	13	3,821,066	0	3,821,066
<b>TOTAL</b>	<b>27</b>	<b>2,870</b>	<b>81,368,186</b>	<b>97,426,698</b>	<b>178,794,884</b>

Source: MIDA Penang

Note: Slight discrepancies may occur due to rounding. Data is subject to adjustments and revisions by MIDA.

**Penang: Approved Manufacturing Projects by Industry, January – March, 2007**

Industry	Number	Employment	Domestic Investment (RM)	Foreign Investment(RM)	Total Capital Investment(RM)
Textiles & Textile Products	1	94	4,653,000	47,000	4,700,000
Paper, Printing & Publishing	1	16	2,591,500	0	2,591,500
Plastic Products	2	93	17,786,633	4,570,000	22,356,633
Basic Metal Products	1	151	14,200,000	0	14,200,000
Fabricated Metal Products	8	213	10,908,266	1,780,200	12,688,466
Machinery & Equipment	7	152	13,713,000	2,891,000	16,604,000
Electronics & Electrical Products	4	1,539	622,400	86,245,068	86,867,468
Transport Equipment	2	406	4,418,002	1,893,430	6,311,432
Miscellaneous	1	206	12,475,385	0	12,475,385
<b>Total</b>	<b>27</b>	<b>2,870</b>	<b>81,368,186</b>	<b>97,426,698</b>	<b>178,794,884</b>

Source: MIDA Penang

Note: Slight discrepancies may occur due to rounding. Data is subject to adjustments and revisions by MIDA.

**Approved Manufacturing Projects By State, January – March, 2007**

State	Number	Employment	Domestic Investment(RM)	Foreign Investment (RM)
Selangor D.E.	70	7,023	746,435,393	877,045,290
<b>Pulau Pinang</b>	<b>27</b>	<b>2,870</b>	<b>81,368,186</b>	<b>97,426,698</b>
Perak D.R.	13	1,136	101,961,508	70,753,430
Johor D.T.	42	4,722	878,899,762	1,610,149,168
Negeri Sembilan D.K.	8	414	88,269,740	166,921,118
Melaka	7	206	16,456,166	3,679,318
Kedah D.A.	8	1,261	28,111,253	588,474,298
Pahang D.M.	7	363	147,189,731	113,917,538
Terengganu D.I.	3	534	17,285,522	273,990,000
Perlis I.K.	1	0	0	0
Sabah	11	290	270,607,730	164,739,157
Sarawak	4	454	84,567,760	7,545,240
<b>TOTAL</b>	<b>201</b>	<b>19,273</b>	<b>2,461,152,751</b>	<b>3,974,641,255</b>

Source: MIDA Penang

Note: Slight discrepancies may occur due to rounding. Data is subject to adjustments and revisions by MIDA.

# TERTIARY SECTOR

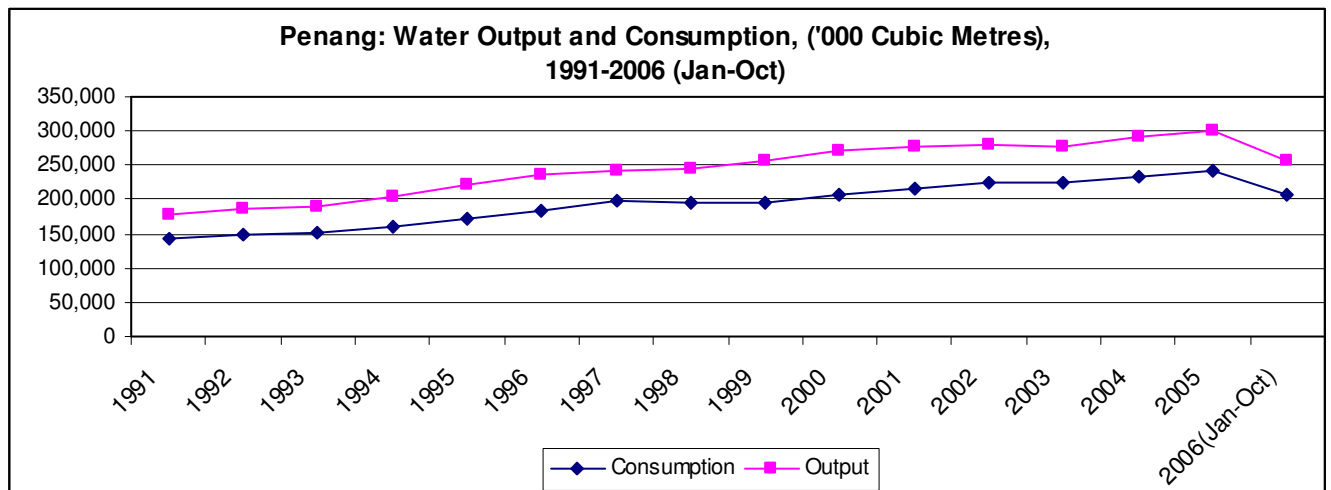
## UTILITIES

### WATER

**Penang: Water Output And Consumption ('000 cubic Metres), 1991 - 2006**

Year	Output	% Increase	Consumption	% Increase
1991	177,829	-	141,866	-
1992	185,413	4.3%	147,424	3.9%
1993	188,685	1.8%	152,477	3.4%
1994	204,006	8.1%	159,598	4.7%
1995	220,550	8.1%	172,321	8.0%
1996	236,124	7.1%	184,541	7.1%
1997	242,531	2.7%	198,038	7.3%
1998	245,425	1.2%	195,668	-1.2%
1999	257,307	4.8%	195,801	0.1%
2000	271,258	5.4%	208,183	6.3%
2001	278,395	2.6%	216,380	3.9%
2002	280,161	0.6%	224,632	3.8%
2003	277,066	-1.1%	223,390	-0.6%
2004	292,858	5.7%	233,057	4.3%
2005	298,985	2.1%	240,999	3.4%
<b>2006(Jan-Oct)</b>	<b>255,563</b>	<b>2.30%</b>	<b>207,782</b>	<b>3.3%</b>

Source: Derived from data provided by Perbadanan Bekalan Air Pulau Pinang Sdn Bhd (PBAPP)



**Penang: Daily Water Supply, 2005 – 2006**

	2005			2006 (As At October)		
	Penang Island	Seberang Perai	Penang State	Penang Island	Seberang Perai	Penang State
No. of Treatment Plants	5	4	9	5	4	9
Max. Capacity of Treatment Plants (cu.m/day)	309,429	956,370	1,265,799	309,364	956,818	1,266,182
Average Daily Production (cu.m)	96,002	723,134	819,136	99,670	740,999	840,669
Average Daily Consumption (cu.m)	316,055	344,215	660,271	329,177	354,318	683,495
No. of Services (consumers)	212,523	218,136	430,659	219,082	225,304	444,386
Daily Consumption (cu.m)						
Per Consumer	1.49	1.58	1.53	1.50	1.57	1.54
Per Industrial Consumer	5.72	4.74	5.23	5.74	4.72	5.23
Per Domestic Consumer	1.01	1.10	1.05	1.00	1.10	1.06

Source: Derived from data provided by Perbadanan Bekalan Air Pulau Pinang Sdn Bhd

**ELECTRICITY****Penang: Electricity Supplied and Consumed**

Transaction	2006 (Jan – Mar)
<b>Total Supply (GWh)</b>	<b>2,111,440</b>
Consumption of Electricity (Gwh)	
Own Consumption by Private Installation (GWh)	<b>1,966</b>
Distribution by Public Installation by Types of Consumers (GWh)	
Domestic	297,149
Commercial	444,601
Industrial	1,219,814
Public Lighting	9,907
<b>Total</b>	<b>1,971,471</b>
Electricity Exported	<b>0</b>
Losses in Transmissions and Statistical Discrepancies	<b>138,003</b>

Note: Excluding demand of 132kV customers supplied via direct 132kV connection

Source: Tenaga Nasional Berhad, Penang

**Penang: Power Demand & Supply, 2000 - 2010**

Year	Maximum Demand (MW)	Installed Capacity (MW)	Excess Capacity %
2000	950	2,518	62%
2001	1,012	2,828	64%
2002	1,049	2,666	61%
2003	1,085	2,788	61%
2004	1,108	2,795	60%
2005	1,121	2,957	62%
2006	1,202	3,254	63%
2007	1,284	3,294	61%
2008	1,361	3,294	59%
2009	1,437	3,267	56%
2010	1,529	3,267	53%

Note: Excluding demand of 132kV customers supplied via direct 132kV connection

Source: Tenaga Nasional Berhad, Penang

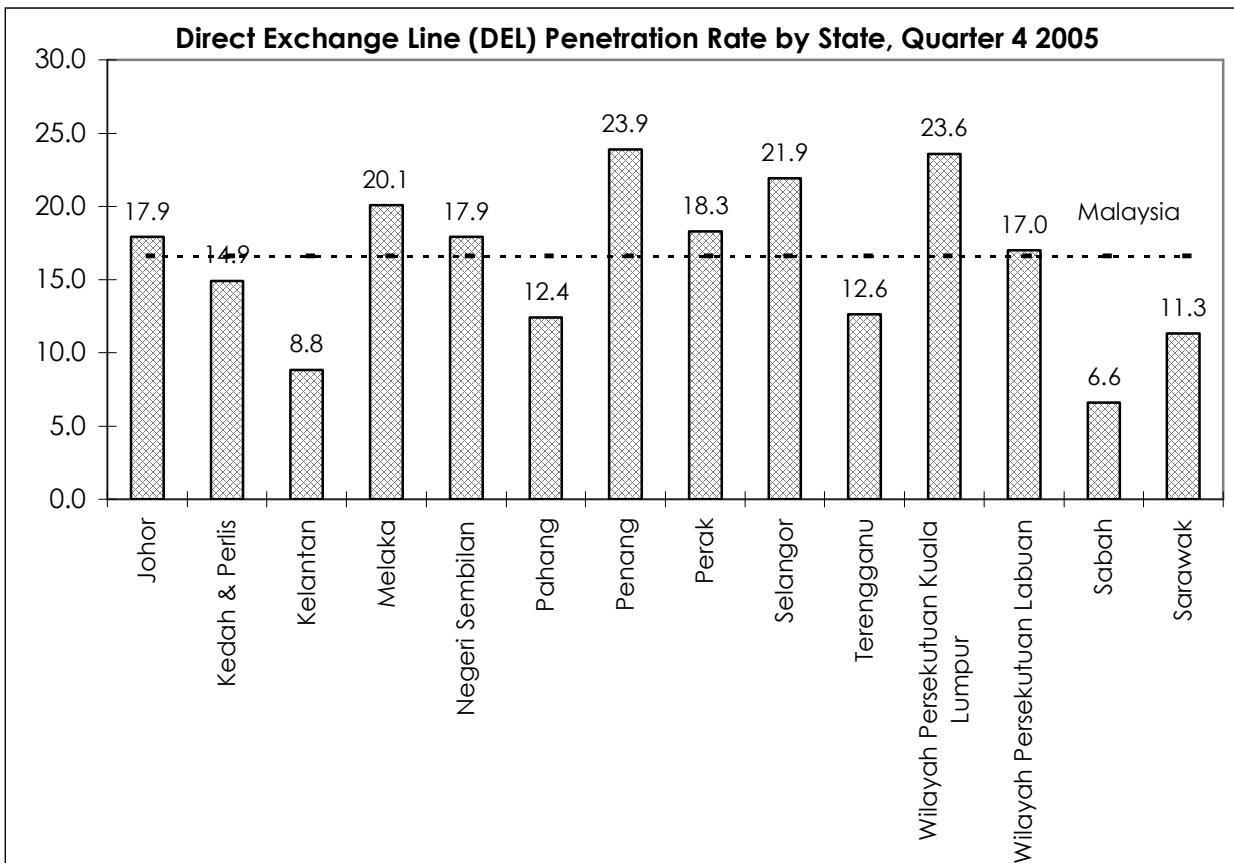
## TELECOMMUNICATIONS

### Direct Exchange Line (DEL) Penetration Rate by State, 2003 - 2005

State	2003	2004	2005			
			Quarter 1	Quarter 2	Quarter 3	Quarter 4
Johor	19.5	18.5	18.3	18.0	17.9	17.9
Kedah & Perlis	15.2	14.3	13.6	13.4	13.6	14.9
Kelantan	10.1	9.2	9.0	8.9	8.8	8.8
Melaka	22.2	20.4	20.3	20.1	20.1	20.1
Negeri Sembilan	19.2	18.2	18.2	18.0	18.0	17.9
Pahang	13.7	12.8	12.8	12.6	12.5	12.4
<b>Penang</b>	<b>25.9</b>	<b>24.2</b>	<b>24.2</b>	<b>23.9</b>	<b>23.9</b>	<b>23.9</b>
Perak	20.0	19.4	18.9	18.4	18.4	18.3
Selangor	23.6	21.9	22.2	22.0	22.0	21.9
Terengganu	13.8	12.9	12.7	12.5	12.5	12.6
Wilayah Persekutuan Kuala Lumpur	25.9	24.6	24.2	23.9	23.7	23.6
Wilayah Persekutuan Labuan	17.7	17.0	16.9	16.9	16.5	17.0
Sabah	7.2	6.7	6.7	6.6	6.5	6.6
Sarawak	12.2	11.5	11.4	11.4	11.3	11.3
<b>Malaysia</b>	<b>18.1</b>	<b>17.2</b>	<b>16.8</b>	<b>16.5</b>	<b>16.5</b>	<b>16.6</b>

Note: Direct Exchange Line (DEL) connects a customer's equipment to the Public Switched telephone Network (PSTN) and has a dedicated port on a telephone exchange. The penetration rate refers to the total DELs to residential as well business.

Source: Malaysian Communications and Multimedia Commission (MCMC)

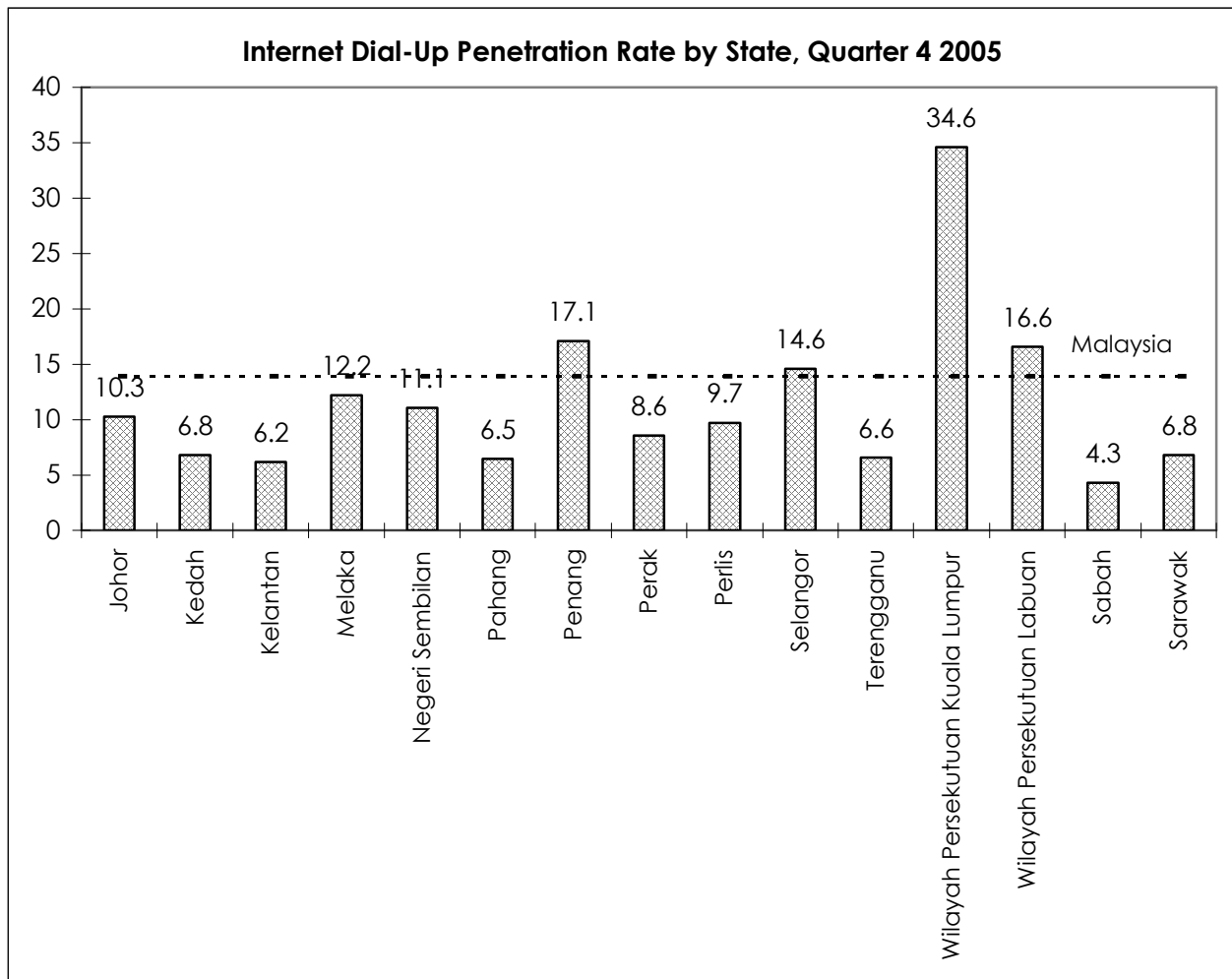


Source: Malaysian Communications and Multimedia Commission (MCMC)

### Internet Dial-Up Penetration Rate by State, 2003 - 2005

State	2003	2004	2005			
			Quarter 1	Quarter 2	Quarter 3	Quarter 4
Johor	9.6	9.9	10.1	10.2	10.2	10.3
Kedah	6.3	6.6	6.6	6.7	6.7	6.8
Kelantan	6.9	6.7	6.2	6.2	6.2	6.2
Melaka	11.5	11.8	11.9	12	12.1	12.2
Negeri Sembilan	10.5	10.8	10.9	11	11.1	11.1
Pahang	6.7	6.3	6.4	6.4	6.4	6.5
<b>Penang</b>	<b>15.8</b>	<b>16.3</b>	<b>16.6</b>	<b>16.7</b>	<b>17.1</b>	<b>17.1</b>
Perak	8.0	8.5	8.6	8.7	8.5	8.6
Perlis	8.3	9.3	9.4	9.5	9.7	9.7
Selangor	14.2	14.3	14.5	14.6	14.6	14.6
Terengganu	6.6	6.5	6.5	6.6	6.6	6.6
Wilayah Persekutuan Kuala Lumpur	32.8	34.5	34.2	34.5	34.6	34.6
Wilayah Persekutuan Labuan	17.8	16.6	16.5	16.6	16.6	16.6
Sabah	3.6	4.2	4.2	4.3	4.3	4.3
Sarawak	6.2	6.7	6.7	6.7	6.8	6.8
<b>Malaysia</b>	<b>11.4</b>	<b>12.7</b>	<b>13.2</b>	<b>13.7</b>	<b>13.8</b>	<b>13.9</b>

Source: Malaysian Communications and Multimedia Commission (MCMC), PIKOM

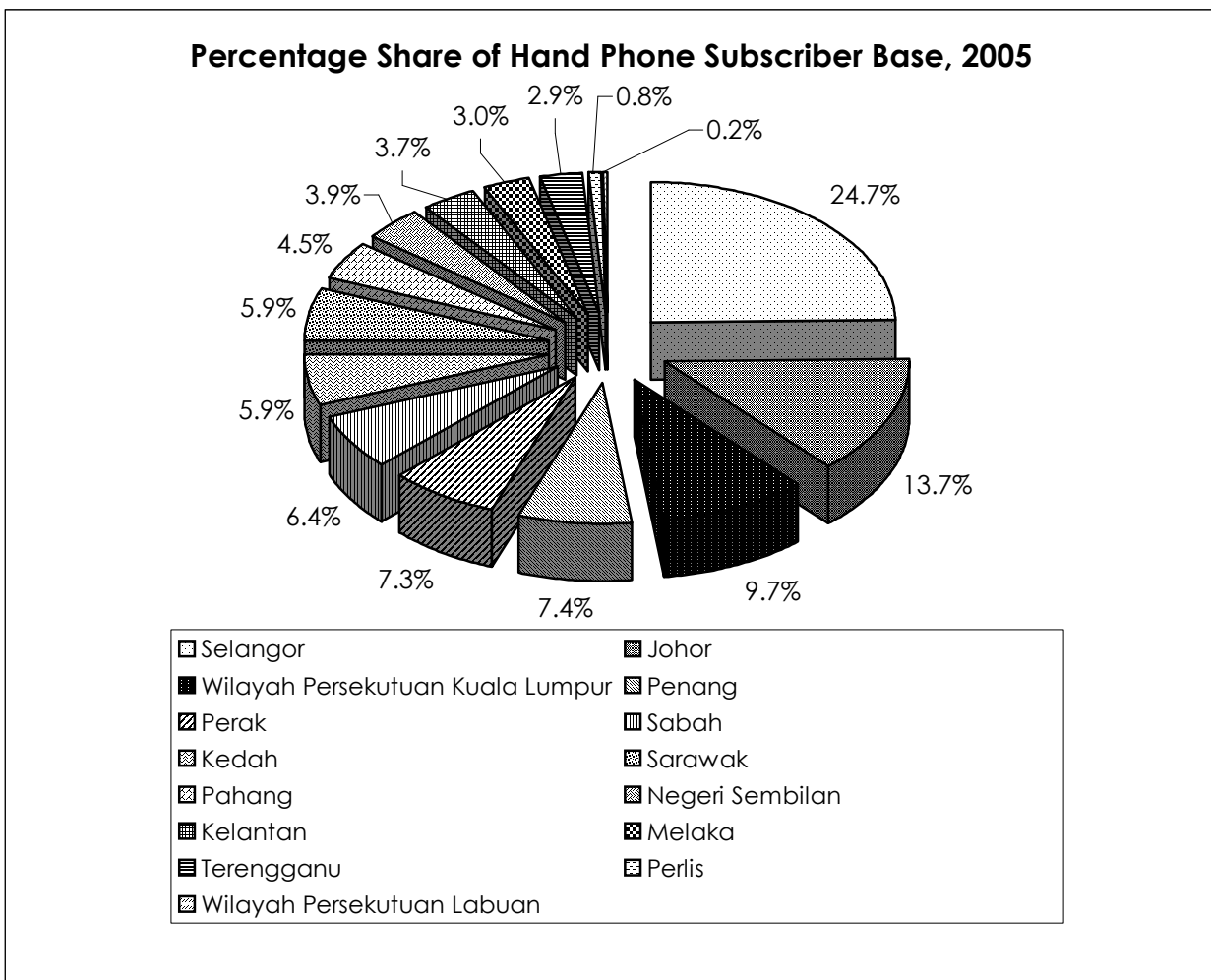


Source: Malaysian Communications and Multimedia Commission (MCMC), PIKOM

### Percentage Share of Hand Phone Subscriber Base, 2005

State	Percentage Share of Hand Phone Subscriber Base
Selangor	24.7
Johor	13.7
Wilayah Persekutuan Kuala Lumpur	9.7
<b>Penang</b>	<b>7.4</b>
Perak	7.3
Sabah	6.4
Kedah	5.9
Sarawak	5.9
Pahang	4.5
Negeri Sembilan	3.9
Kelantan	3.7
Melaka	3.0
Terengganu	2.9
Perlis	0.8
Wilayah Persekutuan Labuan	0.2

Source: MCMC (Derived from Hand Phone Users Survey 2005)



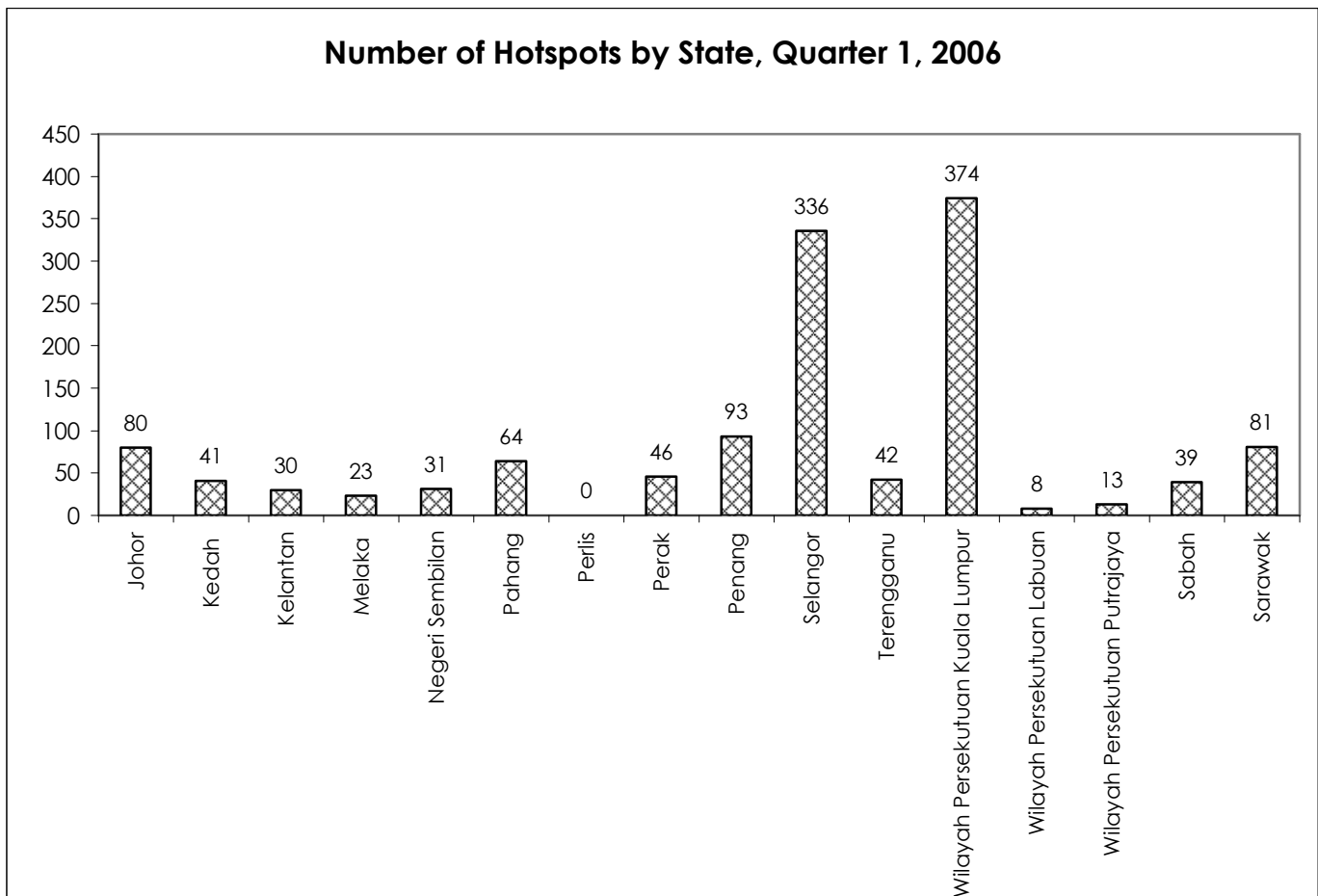
Source: MCMC (Derived from Hand Phone Users Survey 2005)

### Number of Hotspot Locations by State, 2005 - 2006

State	2005	Quarter 1, 2006
Johor	79	80
Kedah	36	41
Kelantan	30	30
Melaka	20	23
Negeri Sembilan	24	31
Pahang	58	64
Perlis	0	0
Perak	44	46
<b>Penang</b>	<b>88</b>	<b>93</b>
Selangor	319	336
Terengganu	43	42
Wilayah Persekutuan Kuala Lumpur	352	374
Wilayah Persekutuan Labuan	9	8
Wilayah Persekutuan Putrajaya	13	13
Sabah	37	39
Sarawak	75	81

Source: Malaysian Communications and Multimedia Commission (MCMC)

### Number of Hotspots by State, Quarter 1, 2006



Source: Malaysian Communications and Multimedia Commission (MCMC)



# ROAD TRANSPORT

## New Motor Vehicle Registration, 2006

Month	Region	Motorcycle	Private Passenger Car	Taxi	Bus	Lorry & Van	Hire Cars	Others	Total
January	Penang	4,344	3,874	15	3	0	172	65	8,473
	Malaysia	38,865	38,728	154	384	150	2,547	1,104	81,932
February	Penang	4,247	3,336	3	6	2	134	63	7,791
	Malaysia	38,125	32,533	75	381	243	2,109	1,063	74,619
March	Penang	5,217	4,510	7	11	4	211	40	9,910
	Malaysia	46,114	43,697	184	553	225	3,307	1,533	95,613
April	Penang	4,470	4,197	9	7	6	213	53	8,955
	Malaysia	38,113	38,591	140	377	126	2,869	1,153	81,369
May	Penang	4,196	4,357	10	11	4	323	63	8,964
	Malaysia	37,723	41,842	196	436	151	3,029	1,456	84,833
June	Penang	3,904	4,439	4	15	8	284	56	8,710
	Malaysia	35,144	39,928	172	460	221	3,165	1,401	80,491
July	Penang	4,102	4,131	5	16	0	259	34	8,547
	Malaysia	38,567	38,422	116	272	264	3,063	1,352	82,056
August	Penang	4,248	4,807	12	30	17	246	40	9,400
	Malaysia	40,164	45,094	153	389	281	3,211	1,449	90,741
September	Penang	3,963	3,961	12	20	7	240	66	8,269
	Malaysia	38,085	40,327	319	397	234	3,347	1,632	84,341
October	Penang	3,322	3,096	6	10	9	163	42	6,648
	Malaysia	33,682	33,898	181	260	203	2,906	1,471	72,601
November	Penang	3,703	3,606	2	11	0	278	36	7,636
	Malaysia	31,898	31,886	147	295	159	3,097	2,901	70,383
December	Penang	3,853	4,090	5	11	0	199	54	8,212
	Malaysia	32,181	33,348	202	433	157	3,027	3,186	72,534

Source: Derived from the statistics provided by Jabatan Pengangkutan Jalan, Malaysia

**Motor Vehicle Re-registration, 2006**

Month	Region	Motorcycle	Private Passenger Car	Taxi	Bus	Lorry & Van	Hire Cars	Others	Total
January	Penang	883,808	637,135	3,064	4,788	49,749	391	15,620	1,594,555
	Malaysia	7,053,972	6,515,799	67,760	57,620	807,562	11,532	394,667	14,908,912
February	Penang	887,372	640,308	3,068	4,793	49,846	391	15,673	1,601,451
	Malaysia	7,087,002	6,547,578	67,975	57,718	809,195	11,566	395,502	14,976,536
March	Penang	892,309	644,696	3,075	4,804	50,038	386	15,707	1,611,015
	Malaysia	7,130,901	6,590,796	68,323	57,970	812,041	11,359	396,730	15,068,120
April	Penang	896,781	648,917	3,080	4,813	50,231	387	15,768	1,619,977
	Malaysia	7,169,081	6,630,207	68,557	58,130	814,532	11,280	397,760	15,149,547
May	Penang	901,156	653,465	3,086	4,822	50,533	386	15,840	1,629,288
	Malaysia	7,208,531	6,674,419	68,840	58,365	817,297	11,211	399,179	15,237,842
June	Penang	904,881	657,773	3,097	4,829	50,796	395	15,893	1,637,664
	Malaysia	7,242,177	6,713,730	69,130	58,576	819,920	11,272	400,345	15,315,150
July	Penang	909,200	662,067	3,116	4,832	51,048	395	15,938	1,646,596
	Malaysia	7,282,896	6,754,569	69,263	58,749	822,776	11,419	401,637	15,401,309
August	Penang	913,370	666,907	3,151	4,846	51,272	414	15,962	1,655,922
	Malaysia	7,322,243	6,800,398	69,520	58,945	825,532	11,547	402,999	15,491,184
September	Penang	917,205	670,724	3,167	4,863	51,485	417	16,025	1,663,886
	Malaysia	7,359,310	6,839,990	69,747	59,300	828,414	11,534	404,580	15,572,875
October	Penang	920,790	673,924	3,179	4,873	51,638	415	16,067	1,670,886
	Malaysia	7,394,456	6,875,430	69,924	59,535	831,135	11,548	406,066	15,648,094
November	Penang	924,525	677,681	3,190	4,875	51,867	380	16,129	1,678,647
	Malaysia	7,426,589	6,908,361	70,102	59,731	833,922	11,577	408,922	15,719,204
December	Penang	928,280	681,748	3,198	4,885	52,050	369	16,212	1,686,742
	Malaysia	7,458,128	6,941,996	70,409	59,991	836,579	11,638	411,991	15,790,732

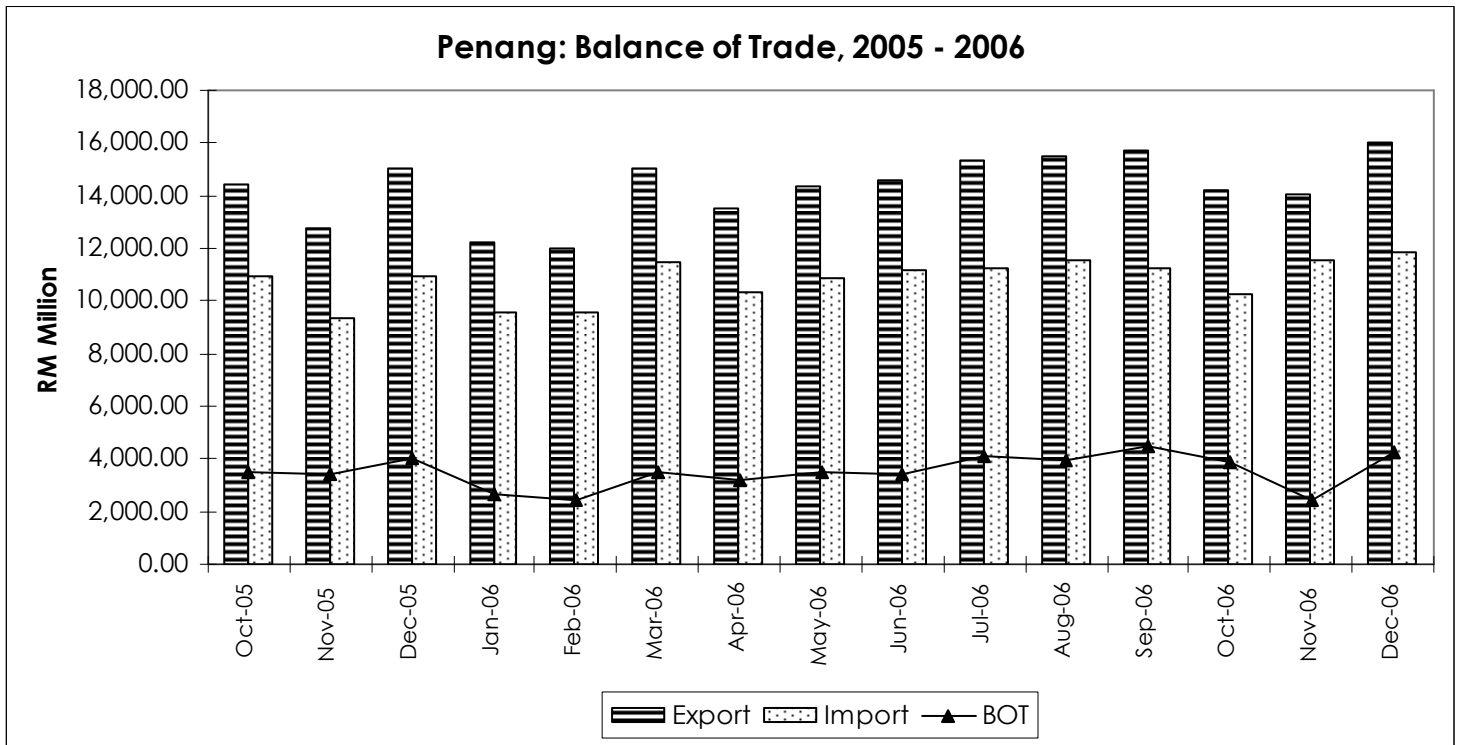
Source: Derived from the statistics provided by Jabatan Pengangkutan Jalan, Malaysia

**TRADE****TRADE BALANCE**

2005	MALAYSIA			PENANG		
	Export	Import	BOT	Export	Import	BOT
Oct	49,722.99	39,203.45	10,519.54	14,416.95	10,954.49	3,462.47
Nov	43,424.36	34,791.96	8,632.40	12,778.53	9,338.35	3,440.18
Dec	49,467.72	40,037.39	9,430.33	15,000.75	10,946.75	4,053.99
<b>TOTAL</b>	<b>142,615.07</b>	<b>114,032.8</b>	<b>28,582.27</b>	<b>42,196.23</b>	<b>31,239.59</b>	<b>10,956.64</b>
2006	MALAYSIA			PENANG		
	Export	Import	BOT	Export	Import	BOT
Jan	43,160.77	34,344.14	8,816.62	12,232.83	9,585.37	2,647.45
Feb	42,269.38	34,884.31	7,385.07	12,012.51	9,567.31	2,445.20
Mar	51,275.35	41,695.35	9,580.00	15,010.92	11,502.72	3,508.21
Apr	45,711.36	39,083.74	6,627.62	13,505.33	10,335.76	3,169.56
Mei	48,239.37	40,250.06	7,989.31	14,320.82	10,838.77	3,482.04
Jun	49,218.57	40,979.47	8,239.11	14,607.07	11,188.45	3,418.62
July	50,525.92	41,489.78	9,036.13	15,316.91	11,241.11	4,075.80
Aug	53,444.15	43,345.28	10,098.86	15,488.79	11,508.43	3,980.36
Sept	53,119.83	42,881.29	10,238.54	15,719.05	11,252.49	4,466.56
Oct	48,052.35	38,625.22	9,427.13	14,182.70	10,289.48	3,893.21
Nov	51,423.24	42,249.35	9,173.89	14,018.89	11,551.53	2,467.37
Dec	52,525.19	40,944.54	11,580.65	16,055.78	11,838.25	4,217.53
<b>TOTAL</b>	<b>588,965.48</b>	<b>480,772.54</b>	<b>108,192.95</b>	<b>172,471.63</b>	<b>130,699.69</b>	<b>41,771.91</b>

Source: Department of Statistics, Malaysia

Note: Data for 2005 is preliminary. Data is subject to adjustments and revisions by DOS.



Source: Derived from data provided by Department of Statistics, Malaysia

## PENANG AIRPORT

### Aircraft Movement per annum, Jan – March 2007 ( Arrival )

Month	No. of Movement
January	1,293
February	1,143
March	1,351
2007 (Jan-March)	3,787

Source: Derived from series of Airport Statistics, Malaysia Airports Berhad

### Aircraft Movement per annum, Jan – March 2007 ( Departure )

Month	No. of Movement
January	1,267
February	1,141
March	1,353
2007 (Jan-March)	3,761

Source: Derived from series of Airport Statistics, Malaysia Airports Berhad

**Number of Passengers (Domestic & International) Jan-March 2007**

Month	No. of Passengers (millions)		
	Domestic	International	Total
January	116,609	115,952	232,561
February	102,574	97,677	200,251
March	135,224	122,427	257,651
<b>2007(Jan-March)</b>	<b>354,407</b>	<b>336,056</b>	<b>690,463</b>

Source: Derived from series of Airport Statistics, Malaysia Airports Berhad

**Cargo Handled (Domestic & International) Jan-March 2007**

Month	Cargo Handled (in '000 metric tones)*		
	Domestic	International	Total
January	1,706,317	14,515,705	16,222,022
February	1,807,011	13,735,300	15,542,311
March	2,248,014	15,768,347	18,016,361
<b>2007(Jan-March)</b>	<b>5,761,342</b>	<b>44,019,352</b>	<b>49,780,694</b>

Source: Derived from series of Airport Statistics, Malaysia Airports Berhad.

**PENANG PORT****Annual Number of Ship calls, 1990 - 2006**

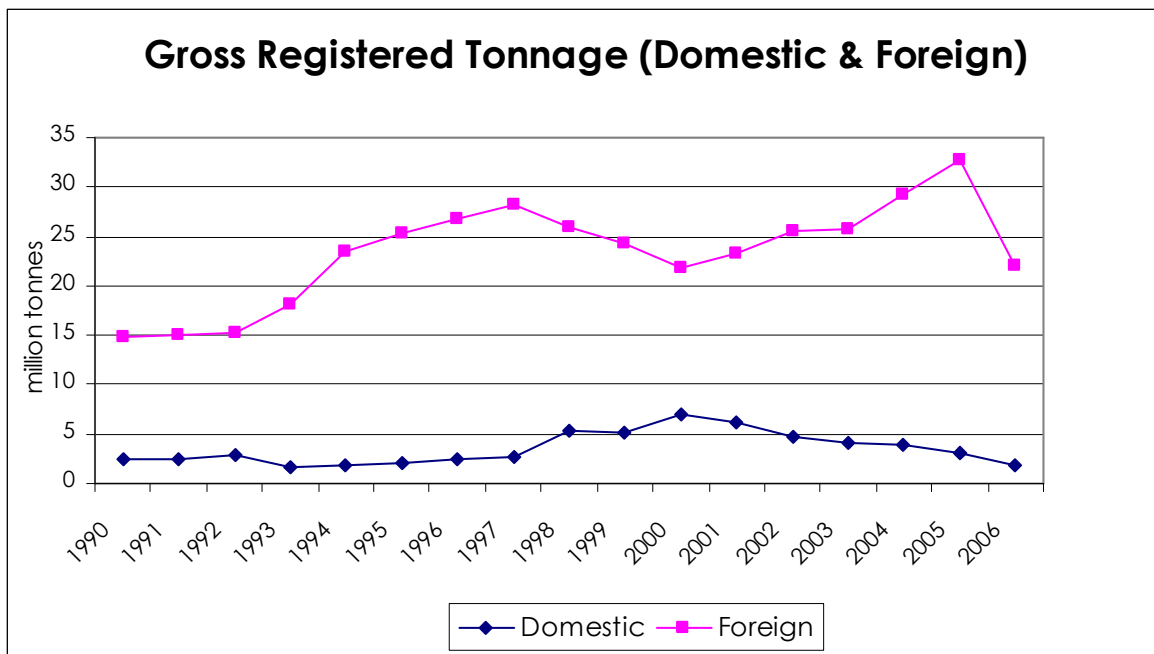
Year	Domestic	Foreign	Total
1990	2,437	3,091	5,528
1991	2,750	3,051	5,801
1992	3,058	3,208	6,266
1993	1,327	4,716	6,043
1994	1,379	4,820	6,199
1995	1,443	5,022	6,465
1996	1,416	5,117	6,533
1997	1,725	5,346	7,071
1998	2,553	5,072	7,625
1999	2,635	4,736	7,371
2000	3,250	4,013	7,263
2001	3,019	4,399	7,418
2002	2,824	4,748	7,572
2003	2,220	4,199	6,419
2004	3,182	3,831	7,013
2005	2,400	3,822	6,222
2005 (Jan – July)	1,401	2,166	3,567
<b>2006 (Jan – July)</b>	<b>1,390</b>	<b>2,449</b>	<b>3,839</b>

Source: Derived from the statistics provided by Penang Port Sdn Bhd

**Gross Registered Tonnage (Domestic & Foreign) in Million, 1990 - 2006**

Year	Domestic	Foreign	Total
1990	2.38	14.78	17.16
1991	2.41	15.05	17.46
1992	2.81	15.33	18.14
1993	1.75	18.02	19.77
1994	1.95	23.40	25.35
1995	2.06	25.26	27.32
1996	2.43	26.76	29.19
1997	2.59	28.23	30.82
1998	5.29	25.93	31.22
1999	5.18	24.35	29.53
2000	7.09	21.87	28.96
2001	6.11	23.37	29.48
2002	4.72	25.58	30.29
2003	4.14	25.80	29.94
2004	3.95	29.16	33.10
2005	3.11	32.83	35.94
2005 (Jan – July)	1.76	18.03	19.79
<b>2006 (Jan – July)</b>	<b>1.76</b>	<b>22.06</b>	<b>23.82</b>

Source: Derived from the statistics provided by Penang Port Sdn Bhd



Source: Derived from the statistics provided by Penang Port Sdn Bhd

**Type of Cargo Handled, 1990 - 2006**

Year	General Cargo	(million freight tonnes)			Total	Container
		Dry Bulk	Liquid Bulk	Containerised		
1990	2.21	2.06	2.73	3.85	10.85	222,441
1991	2.02	2.31	2.94	4.79	12.06	251,849
1992	1.99	2.46	3.14	5.63	13.22	303,367
1993	1.96	2.90	3.28	6.22	14.36	330,915
1994	1.93	2.60	3.31	7.29	15.14	386,182
1995	2.12	2.99	3.46	8.10	16.67	433,474
1996	2.11	3.20	3.52	8.67	17.50	454,765
1997	2.59	3.37	4.11	9.62	19.69	506,863
1998	1.67	2.23	3.86	8.69	16.45	510,307
1999	1.85	2.77	3.99	10.15	18.76	566,409
2000	1.84	3.46	4.11	11.06	20.47	635,423
2001	2.00	3.75	4.10	10.61	20.45	604,294
2002	2.07	4.00	4.39	11.34	21.80	634,042
2003	1.89	4.08	4.18	12.24	22.39	688,171
2004	1.81	3.73	4.38	13.50	23.42	772,024
2005	1.79	3.80	4.11	13.87	23.57	795,289
<b>2006 (As at Nov)</b>	<b>1.53</b>	<b>3.60</b>	<b>3.57</b>	<b>9.6</b>	<b>18.27</b>	<b>773,637</b>

Source: Derived from the statistics provided by Penang Port Sdn Bhd

## TOURISM

### Penang: Average Occupancy Rate, Number of Registered Guests and Estimated Total Visitor Arrivals, 2002 - 2006

	2002	2003	2004	2005	2006
Average Occupancy Rate	53.9%	49.8%	60.2%	60.2%	67.9%
Average Occupancy Rate for Beach Hotels	54.1%	46.7%	60.5%	55.0%	60.6%
Average Occupancy for City Hotels	53.8%	51.9%	60.0%	63.4%	71.9%
Estimated Total Visitor Arrivals for the State	3.42 mil	3.03 mil	3.52 mil	3.09 mil	3.08 mil
Estimated Domestic Share	47.9%	61.7%	56.6%	63.0%	62.5%
Estimated International Share	52.1%	38.3%	43.4%	37.0%	37.5%

Source: PDC Consultancy Sdn. Bhd. (Formerly known as DCT Consultancy Services Sdn. Bhd.) & SERI

\* It should be noted that the decline in visitor arrivals in general and international visitor arrivals in particular in 2006 compared to 2005 was partly due to the different basis of estimation for the two periods. Thus, the two sets of figures are deemed incompatible due to the different bases of estimation for the two periods.

## PROPERTY

### Penang: House Price Index, 1988 - 2003

Year	Indices				
	Terraced	High-Rise	Detached	Semi-Detached	All Houses
Weight (2000=100)	38.1	50.7	2.9	8.4	100.0
<b>1988*</b>	90.0	77.9	72.9	87.2	87.7
<b>1989*</b>	92.0	88.1	77.5	92.5	92.2
<b>1990*</b>	100.0	100.0	100.0	100.0	100.0
<b>1991*</b>	110.6	117.6	118.2	111.3	111.7
<b>1992*</b>	113.9	125.5	135.1	116.0	115.7
<b>1993*</b>	118.5	132.7	145.2	125.3	124.3
<b>1994*</b>	126.0	145.0	162.5	143.3	132.5
<b>1995*</b>	149.7	160.0	180.9	151.1	145.0
<b>1996*</b>	153.7	156.4	197.2	170.0	152.1
<b>1997*</b>	165.7	170.8	206.1	184.6	169.2
<b>1998*</b>	157.7	162.7	179.2	167.3	159.4
<b>1999*</b>	161.0	163.4	173.4	169.3	165.4
<b>1999</b>	99.3	98.7	95.5	93.2	97.8
<b>2000**</b>	100.0	100.0	100.0	100.0	100.0
<b>2001</b>	102.9	108.7	85.5	93.2	102.9
<b>2002</b>	115.6	95.1	97.6	96.0	102.6
<b>2003</b>	118.3	124.7	95.3	91.4	115.5

Source: The Malaysian House Price Index

\* - Indices with 1990 as the base year

\*\* - New Base year for the revised IHRM 2000



### Penang: Number of Transactions by Price Range for the Principal Property Sub-Sectors, 2004 & 2005

Price Range (RM)	Year	Residential	Commercial	Industrial	Agricultural	Development	Others	Total
0 - 25,000	2004	560	20	1	80	218	16	895
	2005	504	44	1	224	319	8	1,100
25,001 - 50,000	2004	1,719	33	5	106	239	13	2,115
	2005	1,747	206	2	149	303	12	2,419
50,000 - 75,000	2004	2,864	40	10	51	174	4	3,143
	2005	2,445	109	2	98	112	2	2,768
75,001 - 100,000	2004	3,019	110	9	58	129	11	3,336
	2005	2,665	105	7	98	107	4	2,986
100,001 - 150,000	2004	3,958	238	33	62	140	8	4,439
	2005	3,697	273	22	94	131	10	4,227
150,001 - 200,000	2004	2,419	309	45	45	129	5	2,952
	2005	2,404	292	44	71	114	3	2,928
200,001 - 250,000	2004	1,441	282	72	33	79	2	1,909
	2005	1,486	362	50	45	88	4	2,035
250,001 - 500,000	2004	2,552	738	251	76	266	9	3,892
	2005	2,330	761	243	107	256	10	3,707
500,001 - 1,000,000	2004	538	274	68	30	188	11	1,109
	2005	621	264	97	42	164	8	1,196
1,000,001 & Above	2004	135	57	74	28	200	8	502
	2005	112	65	62	22	211	2	474
<b>Total</b>	<b>2004</b>	<b>19,205</b>	<b>2,101</b>	<b>568</b>	<b>569</b>	<b>1,762</b>	<b>87</b>	<b>24,292</b>
	<b>2005</b>	<b>18,011</b>	<b>2,481</b>	<b>530</b>	<b>950</b>	<b>1,805</b>	<b>63</b>	<b>23,840</b>

Source: Jabatan Penilaian dan Perkhidmatan Harta

### Penang: Value of Transactions by Price Range for the Principal Property Sub-Sectors, 2004 & 2005 (in RM million)

Price Range (RM)	Year	Residential	Commercial	Industrial	Agricultural	Development	Others	Total
0 - 25,000	2004	12.77	0.27	0.00	1.04	3.13	0.22	17.43
	2005	10.94	0.77	0.02	2.90	4.07	0.12	18.82
25,001 - 50,000	2004	70.50	1.27	0.19	3.99	9.20	0.45	85.60
	2005	67.98	8.51	0.08	5.69	11.52	0.41	94.19
50,000 - 75,000	2004	185.15	2.65	0.65	3.22	11.05	0.26	202.98
	2005	159.16	7.01	0.12	6.18	6.98	0.14	179.59
75,001 - 100,000	2004	269.02	9.89	0.83	4.95	11.49	0.93	297.11
	2005	234.86	9.27	0.63	8.76	9.56	0.34	263.42
100,001 - 150,000	2004	501.63	30.66	4.26	7.73	17.54	1.02	562.84
	2005	467.53	35.54	2.92	11.68	16.31	1.31	535.29
150,001 - 200,000	2004	421.40	55.38	8.14	8.16	23.09	0.82	516.99
	2005	417.93	52.45	8.01	12.46	19.90	0.54	511.29
200,001 - 250,000	2004	325.72	64.92	16.81	7.48	17.91	0.45	433.29
	2005	336.51	82.90	11.48	10.19	20.05	0.91	462.04
250,001 - 500,000	2004	866.61	257.02	85.36	28.20	95.16	3.15	1,335.50
	2005	800.78	266.83	84.57	36.03	92.24	3.87	1,284.32
500,001 - 1,000,000	2004	353.82	178.77	46.36	21.11	132.05	7.21	739.32
	2005	415.92	171.71	66.58	27.91	117.75	5.22	805.09
1,000,001 & Above	2004	230.98	94.43	291.77	66.33	767.01	11.59	1,462.11
	2005	190.34	147.20	213.85	39.65	750.75	6.24	1,348.03
<b>Total</b>	<b>2004</b>	<b>3,237.60</b>	<b>695.26</b>	<b>454.37</b>	<b>152.21</b>	<b>1,087.63</b>	<b>26.10</b>	<b>5,653.17</b>
	<b>2005</b>	<b>3,101.95</b>	<b>782.19</b>	<b>388.26</b>	<b>161.45</b>	<b>1,049.13</b>	<b>19.10</b>	<b>5,502.08</b>

Source: Jabatan Penilaian dan Perkhidmatan Harta

## EDUCATION

### Penang: Number of Schools, Students & Teachers at the Primary Level, Jan 2005

Type of School	No. of Schools	Enrolment		No. of Students	No. of Classes	No. of Teachers	Non-Teaching Staff
		Male	Female				
SK	113	38,595	36,104	74,699	2,300	4,276	579
SRK	29	8,720	8,123	16,843	510	1,019	141
SJK (C)	90	29,543	27,737	57,280	1,682	2,975	461
SJK (T)	28	2,893	3,025	5,918	223	400	108
SK Khas	3	80	69	149	29	54	19
<b>Total</b>	<b>263</b>	<b>79,831</b>	<b>75,058</b>	<b>154,889</b>	<b>4,744</b>	<b>8,724</b>	<b>1,308</b>

Source: Jabatan Pendidikan Negeri, Pulau Pinang

### Penang: Number of Schools, Students & Teachers at the Secondary Level, Jan 2005

Type of School	No. of Schools	Enrolment		No. of Students	No. of Classes	No. of Teachers	Non-Teaching Staff
		Male	Female				
SMK	96	51,704	52,749	104,453	3,233	6,294	1,025
SMT	6	1,396	739	2,135	105	442	107
SMKA	4	1,210	1,526	2,736	97	226	58
SM Khas	1	95	73	168	19	44	18
SMBP	1	373	240	613	24	64	34
SM + SR (Special Model)	1	456	466	922	33	74	17
<b>Total</b>	<b>109</b>	<b>55,234</b>	<b>55,793</b>	<b>111,027</b>	<b>3,511</b>	<b>7,144</b>	<b>1,259</b>

Source: Jabatan Pendidikan Negeri, Pulau Pinang

### Penang: Number of Students Taking Public Exams and Passing Rates, 2004 - 2005

	No. of Students		No. of Passes		Passing Rate (%)	
	2004	2005	2004	2005	2004	2005
UPSR	23,521	24,125	15,210	16,202	64.7	67.2
PMR	19,600	20,677	12,677	14,394	64.6	69.6
SPM	18,354	20,644	15,968	n.a	87.0	n.a
STPM	3,725	3,899	3,567	n.a	95.8	n.a

Source: Jabatan Pendidikan Negeri, Pulau Pinang

### Penang: Number of Private Education Institutions (as of 31 December 2005)

Type of Institution	No. of Institutions	No. of Students	No. of Teachers
Private Primary Schools	2	125	21
Private Secondary Schools	4	355	38
Private Religious Primary Schools	0	0	0
Private Religious Secondary Schools	0	0	0
Chinese Independent Schools	5	2,781	195
International Schools	3	1,349	102
Expatriate Schools	2	273	35
Special Need Schools	3	334	44
Language Centres	0	0	0
Computer Centres	8	358	25
Tuition Centres	29	1,418	116
Skills Training Centres	120	6,100	542
Kindergartens	24	154	48
<b>Total Private Education Institutions</b>	<b>525</b>	<b>34,097</b>	<b>2,160</b>

Note: Including assistant teachers

Source: Jabatan Pendidikan Swasta, Malaysia

## HEALTH

### Penang: Ratio of Medical Professionals – Population As, 2007

Professional / Year	Total	Ratio
Medical Officer	1498	1:996
Dental Officer	194	1:7693
Nurse	2859	1:522

Source: Penang State Health Department

### Penang: Health Facilities January – March, 2007

	January- March
Government Hospital	6
Private Hospital	16
Private Maternity Home	8
Hospice	2
Mother & Child Health Care**	6
Health Centre*	26
Rural Clinics	62

\* Inclusive of Polyclinic & Hospitals' Outpatient Department

\*\* Inclusive of MCH Clinic located in Health Clinic Building

Source: Penang State Health Department

### Penang: Number of Beds, Bed Occupancy Rate (BOR) & Average Length of Stay (ALOS) for Government Hospitals, January – February 2007

Hospital	January – February 2007				
	Beds	BOR (%)		ALOS (%)	
		Jan	Feb	Jan	Feb
Hospital Pulau Pinang	1090	73.21	72.17	5.21	5.13
RHSP (Hospital Seberang Jaya)	314	95.08	87.33	3.24	3.20
RHSP (Hospital Bukit Mertajam)	242	41.51	47.09	3.24	3.61
Hospital Sungai Bakap	105	49.74	51.60	2.99	2.91
Hospital Balik Pulau	108	62.34	68.01	7.93	7.73
Hospital Kepala Batas	71	73.54	72.65	4.37	4.42
<b>Total</b>	<b>1930</b>	<b>71.14</b>	<b>70.24</b>	<b>4.32</b>	<b>4.33</b>

Source: Penang State Health Department

### Penang: HIV/AIDS , January – March, 2007

	Death	Identified
HIV	0	98
AIDS	12	21

Source: Penang State Health Department

## SELECTED NATIONAL STATISTICS

### Malaysia: Gross Domestic Product by Sector (Current Prices & 1987 Prices)

Component	RM Million				
	Q4/05	Q1/06	Q2/06	Q3/06	Q4/06
National Accounts (GDP) at Current Prices	130,458	129,499	133,815	141,360	140,906
Agriculture, Forestry and Fishing	11,023	11,270	12,183	13,787	12,710
Mining and Quarrying	20,454	21,252	21,060	22,970	20,963
Manufacturing	39,944	39,888	41,189	42,419	43,398
Electricity, Gas and Water	3,583	3,666	3,947	4,054	3,953
Construction	3,881	3,523	3,895	3,880	3,903
Wholesale and Retail Trade, Hotel and Restaurants	17,520	16,882	17,040	18,292	18,675
Transport, storage and Communication	8,289	8,274	8,459	8,770	8,892
Finance, Insurance, real estate and business services	13,860	13,782	14,780	15,192	15,556
Other Services	7,638	7,598	7,772	7,952	8,082
Government Services	9,135	8,454	9,003	9,581	10,146
Less : Imputed bank service charges	6,232	6,529	6,925	7,006	6,727
Plus : import duties	1,365	1,438	1,414	1,471	1,355
National Accounts (GDP) at 1987 Prices	68,072	66,348	68,212	70,743	71,921
Agriculture, Forestry and Fishing	5,410	5,335	5,762	6,163	5,760
Mining and Quarrying	4,475	4,444	4,091	4,400	4,562
Manufacturing	21,681	21,440	22,099	22,397	22,604
Electricity, Gas and Water	2,686	2,734	2,861	2,940	2,866
Construction	1,809	1,646	1,820	1,811	1,820
Wholesale and Retail Trade, Hotel and Restaurants	10,201	9,766	9,810	10,422	10,729
Transport, storage and Communication	5,932	5,930	6,019	6,217	6,336
Finance, Insurance, real estate and business services	10,417	10,141	10,751	10,960	11,283
Other Services	5,194	5,182	5,268	5,366	5,438
Government Services	5,158	4,773	5,083	5,394	5,713
Less : Imputed bank service charges	5,936	6,147	6,423	6,431	6,213
Plus : import duties	1,044	1,105	1,071	1,104	1,026

Source: Bank Negara Malaysia

Note: Data is subject to adjustments and revisions by Bank Negara Malaysia

### Malaysia: Exchange Rates

Period (RM as at)	USD	GBP	EUR	AUD	JPY100	SGD
30 Mar '07	3.4560	6.7867	4.6105	2.7912	2.930	2.2781

Source: Currency Converter, <http://www.bnm.gov.my/index.php>, Bank Negara Malaysia

### Malaysia: National Indices & Employment Data

Unit Description	Latest Period	Latest Data	Previous Period	
Industrial Production Index	2000=100	Mar-07	10.40	10.42
Employment	(million persons)	Q4/2006	10.408	10.422
Employment	% of labour force	Q4/2006	97.0	96.9
Unemployment	(million persons)	Q4/2006	0.319	0.336
Unemployment	% of labour force	Q4/2006	3.0	3.1
Average salaries and wages per employee in manufacturing sector	RM per month	Mar-07	1,794.3	1,796.7
Consumer Price Index	2005=100	Apr-2007	105.0	105.0
Producer Price Index	1989=100	Mar-2006	130.6	129.9

Source: Bank Negara Malaysia

## Malaysia: Federal Government Accounts

Component	RM Million	
	2004	2005
Public Sector Operations		
General Government		
Revenue	95,034	94,961
Operating Expenditure	101,026	106,633
NPFE's Operating Surplus	81,252	84,973
Public Sector Current Account	75,260	73,301
Net Development Expenditure	56,716	64,451
Public Sector Overall Balance	18,544	8,850
Domestic Financing	-16,578	2,376
Bank	-40,045	-8,226
Non-Bank	23,467	10,602
Foreign Borrowing	-1,966	-11,226

Source: Bank Negara Malaysia

## Malaysia: Producer Price Index

1989 = 100

Section	Weights	2005	January - February Average		
			2005	2006	% Change
Food & Live Animals Chiefly for Food	14.88	141.1	140.0	141.8	1.3
Beverages and Tobacco	2.08	170.6	169.9	172.0	1.2
Crude Materials, Inedible Except Fuels	17.96	137.0	132.4	146.6	10.7
Mineral Fuel / Lubricants & Related Materials	18.82	274.4	230.8	311.1	34.8
Animal & Vegetable Oils & Fats	8.47	172.7	167.1	173.3	3.7
Chemicals & Related Products N.E.S.	4.42	127.3	127.0	125.1	-1.5
Manufactured Goods Classified Chiefly by Material	10.82	128.6	128.1	128.7	0.5
Machinery & Transport Equipment	18.35	110.9	110.5	110.6	0.1
Miscellaneous Manufactured Articles	3.61	131.8	130.6	132.6	1.5
Commodities & Transactions N.E.C. in the S.I.T.C.	0.59	130.1	130.1	130.6	0.4
<b>Total</b>	<b>100.00</b>	<b>160.8</b>	<b>150.9</b>	<b>169.5</b>	<b>12.3</b>

Source: The Malaysian Economy in Brief, March 2006, Department of Statistics, Malaysia

## Malaysia: Consumer Price Index

2005=100

Period	All groups	Food & non-alcoholic beverages	Alcoholic beverages & tobacco	Clothing & footwear	Housing, water, electricity, gas & other fuels	Furnishings, household equipment & routine	Health	Transport	Communication	Recreation services and culture	Education	Restaurant & hotels	Miscellaneous goods and services
<b>2003</b>	93.4	99.3	100.8	96.9	95.0	97.4	93.4	99.3	100.8	96.9	95.0	97.4	93.4
<b>2004</b>	94.1	100.0	99.9	98.2	96.6	98.7	94.1	100.0	99.9	98.2	96.6	98.7	94.1
<b>2005</b>	100.0	100.0	100.0	100.0	100.0	100.0	100.0	100.0	100.0	100.0	100.0	100.0	100.0
<b>2006</b>													
Jan	101.8	102.8	105.1	98.8	100.5	100.7	101.4	103.6	99.5	100.4	100.8	102.3	101.3
Feb	101.9	102.6	105.2	99.8	100.7	100.8	101.6	103.6	99.4	100.8	101.1	102.5	101.7
Mar	103.4	102.3	105.2	98.6	101.2	100.8	101.6	113.2	99.2	100.7	101.2	102.9	101.5
Apr	103.4	102.3	105.2	99.6	101.2	101.0	101.7	112.2	98.9	100.7	101.3	103.2	102.0
May	103.6	102.9	105.3	99.4	101.4	101.0	101.9	112.2	98.7	100.7	101.3	103.5	103.2
June	103.8	103.3	105.3	98.8	101.7	101.1	102.0	112.3	98.5	100.7	101.6	103.8	102.6
July	104.0	103.7	105.4	99.3	101.7	101.2	102.3	112.3	98.4	100.9	101.7	104.0	102.5
Aug	103.9	103.5	105.4	97.9	101.9	101.1	102.4	112.4	98.3	100.8	101.9	104.2	102.6
Sept	104.1	103.6	110.3	98.9	101.9	101.3	102.6	112.5	98.2	100.8	102.0	104.3	102.6
Oct	104.1	103.9	110.3	97.4	101.9	101.4	102.6	112.5	98.1	100.8	102.0	104.3	102.0
Nov	104.4	104.5	110.3	98.5	102.1	101.5	102.8	112.5	98.0	100.8	102.1	104.5	102.4
Dec	104.6	105.0	11.4	97.2	102.2	101.5	102.9	112.5	97.9	100.7	102.5	104.7	102.5
<b>2007</b>													
Jan	105.1	106.0	110.3	98.3	102.2	101.8	103.1	113.2	97.8	100.8	103.1	105.0	102.4
Feb	105.9	110.3	97.2	102.5	101.7	103.2	113.2	97.7	100.9	103.2	104.9	102.6	105.9
Mar	105.4	110.3	97.5	102.5	102.0	103.2	113.4	97.6	100.7	103.3	105.4	102.6	105.4

Note: Data from 2003 – 2007 refers to Consumer Price Index (2005=100) for Malaysia.

Source: Department of Statistics, Malaysia

## Malaysia: Index of Industrial Production

2000 = 100

Period	All Divisions	Mining	Electricity	Manufacturing	Export-Oriented Industries	Domestic-oriented Industries					
Weight	100.0	23.37	5.96	70.67	0.80	0.20					
<b>2000</b>	100.0	100.0	100.0	100.0	100.0	100.0					
<b>2001</b>	96.7	103.1	108.7	93.5	91.3	102.5					
<b>2002</b>	101.2	104.9	119.9	98.4	95.7	109.0					
<b>2003</b>	110.5	110.5	126.8	109.1	107.9	114.0					
<b>2004</b>	122.5	117.0	137.2	123.0	123.8	119.9					
<b>2005</b>	127.5	117.6	145.1	129.3	130.8	123.2					
<b>2006</b>											
Jan	130.2	120.5	142.7	132.4	135.1	121.8					
Feb	123.8	108.7	138.9	127.5	130.1	117.2					
Mar	138.9	121.6	158.2	142.9	146.0	130.7					
Apr	130.3	110.7	152.3	135.0	137.3	125.8					
May	133.1	103.9	155.0	140.9	142.1	136.2					
June	135.4	108.8	152.2	142.7	144.1	137.4					
July	136.8	114.4	158.8	142.3	143.2	138.6					
Aug	138.2	114.4	159.0	144.3	145.1	141.3					
Sept	136.0	111.3	154.3	142.6	142.9	141.4					
Oct	132.3	120.3	149.0	134.8	136.3	129.0					
Nov	136.6	115.7	154.3	142.0	143.3	136.6					
Dec	137.5	121.2	155.3	141.3	143.4	133.1					
<b>2007</b>											
Jan	132.5	117.2	154.3	135.7	137.8	127.8					
Feb	123.0	105.6	139.2	127.4	129.2	120.3					
<b>Export-Oriented Industries</b>											
Period	Total	Electronic & Electrical	Of Which		Chemicals & Chemical Products	Petroleum Products	Textiles & Wearing Apparel	Wood & Wood Products	Rubber Products	Off-Estate Processing	Others
			Electronics	Electricals							
<b>2006</b>											
Jan	135.1	133.2	155.0	90.6	154.7	162.0	86.7	112.5	123.3	101.6	96.3
Feb	130.1	132.9	148.8	101.9	137.3	149.3	80.6	99.4	127.7	112.7	94.5
Mar	146.0	150.4	172.4	107.4	144.7	171.0	86.3	114.8	143.6	133.0	121.1
Apr	137.3	137.2	157.2	98.1	148.6	150.5	85.8	109.7	147.5	138.1	118.9
May	142.1	137.6	155.8	102.0	163.8	154.4	105.9	117.8	144.2	145.0	126.8
Jun	144.1	145.4	167.8	101.6	160.2	154.6	90.1	112.1	140.5	138.2	129.6
July	143.2	141.7	166.4	93.4	160.4	157.6	89.4	113.3	148.5	145.0	129.1
Aug	145.6	142.1	166.1	95.4	165.0	159.6	92.4	119.4	150.2	158.4	129.4
Sept	142.9	143.6	165.1	101.8	148.8	153.1	88.7	119.4	149.9	164.3	132.1
Oct	136.3	127.6	146.7	90.4	155.7	170.3	79.5	116.2	142.6	144.0	120.9
Nov	143.3	139.4	158.8	101.7	154.0	167.4	97.2	116.1	151.0	157.8	120.3
Dec	143.4	141.4	163.6	98.0	153.3	176.6	86.2	121.2	147.5	121.6	109.9
<b>2007</b>											
Jan	137.8	132.1	152.2	92.9	158.5	165.2	78.1	110.7	163.2	119.3	115.5
Feb	129.2	122.9	141.6	86.4	148.9	159.4	75.2	108.7	146.5	106.3	110.5

Period	Domestic-Oriented Industries								
	Total	Non-metallic Mineral Products	Iron and steel	Food Manufacturing	Transport Equipment	Fabricated Metal Products	Paper Products	Beverages	Tobacco Products
<b>2006</b>									
Jan	121.8	109.0	96.3	119.4	162.6	121.9	119.0	155.2	81.0
Feb	117.2	100.3	92.7	119.1	146.4	131.3	120.9	120.8	74.3
Mar	130.7	115.6	106.1	132.8	161.6	156.0	120.5	86.0	98.7
Apr	125.8	113.7	102.1	129.9	154.7	148.5	111.6	88.5	80.1
May	136.2	120.0	109.1	136.0	156.2	172.1	144.1	83.7	81.9
Jun	137.4	118.9	114.6	144.6	156.0	159.6	146.1	109.5	95.7
July	138.6	123.0	112.2	147.9	149.7	162.1	145.8	130.4	96.2
Aug	140.6	121.1	111.5	159.9	147.9	166.6	145.4	126.8	95.9
Sept	141.4	125.3	112.9	153.3	154.4	169.4	144.8	116.5	78.5
Oct	129.0	117.6	109.5	134.5	130.8	160.4	139.0	96.9	58.0
Nov	136.6	120.0	130.0	140.5	137.5	165.4	142.9	126.4	79.7
Dec	133.1	117.8	125.1	140.2	128.6	166.8	134.6	117.7	77.2
<b>2007</b>									
Jan	127.8	109.1	111.9	142.5	112.8	161.2	139.5	141.2	88.7
Feb	120.3	99.1	102.2	134.3	109.7	158.1	139.2	101.2	72.2

Source: Department of Statistics, Malaysia

Note: Under the new Industrial Production Index (2000=100), LNG processing has been reclassified as petroleum products (previously classified as chemicals and chemical products). Petroleum products have now been categorized under export-oriented industries (previously: domestic-oriented industries).