

Penang Statistics

Quarter 4, 2006



Submitted to the Penang State Government
by

Socio-Economic & Environmental Research Institute
10 Brown Road, 10350 Penang
Tel: (04) 228 3306 Fax: 226 7042
E-mail: seripg@tm.net.my
Website: <http://www.seri.com.my>

CONTENTS

PHYSICAL ATTRIBUTES	
Area, Location & Climate	3
DEMOGRAPHY	
Penang: Estimated Population (in '000) and Distribution by Districts	3
Penang: Estimated Population by Sex (in '000)	3
Penang: Estimated Population by Ethnic Group (in '000)	4
ECONOMIC	
Penang: Growth Rate of Gross Regional Product (In 1987 – Constant Prices)	5
EMPLOYMENT	
Penang: Percentage of Employed Persons by Industry (%), 2001 – 2005	5
PRIMARY SECTOR	
AGRICULTURE	
Penang: Agriculture Areas (In Hectares), 1998 - 2003	6
LIVESTOCK	
Penang: Livestock Survey, 2002 - 2004	6
Penang: Production and Value of Livestock, 2003 - 2004	7
FISHERIES	
Penang: Landings of Marine Fish, 1995 - 2006	7
Penang: Aquaculture Production and Value, 1995 - 2006	8
SECONDARY SECTOR	
MANUFACTURING	
Penang: Approved Manufacturing Projects, Employment & Capital Investment, 1995 - 2006	8
Penang: Approved Manufacturing Projects By Industry, 2004 - 2006	9
Approved Manufacturing Projects And Investment By State, 2004 - 2006	9
TERTIARY SECTOR	
UTILITIES	
WATER	
Penang: Water Output And Consumption ('000) cubic metres), 1991 - 2006	10
Penang: Daily Water Supply, 2005 - 2006	11
ELECTRICITY	
Penang: Electricity Supplied and Consumed	11
Penang: Power Demand & Supply, 2000 - 2010	11
TELECOMMUNICATIONS	
Direct Exchange Line (DEL) Penetration Rate by State, 2003 - 2005	12
Internet Dial-Up Penetration Rate by State, 2003 - 2005	13
Percentage Share of Hand Phone Subscriber Base, 2005	14
Number of Hotspot Locations by State, 2005 - 2006	15
TRANSPORT	
ROAD TRANSPORT	
New Motor Vehicle Registration, 2006	16
Motor Vehicle Re-registration, 2006	16
TRADE	
TRADE BALANCE	
Export, Import & Balance of Trade, 2005 - 2006 (RM million)	17

AIRPORT	
Aircraft Movement per annum, 1991 - 2006	18
Number of Passengers (Domestic & International) per annum, 1991 - 2006	18
Cargo Handled (Domestic & International) per annum, 1991 - 2006	19
PORT	
Annual Number of Shipcalls, 1990 – 2006	21
Gross Registered Tonnage (Domestic & Foreign), 1990 – 2006	21
Type of Cargo Handled, 1990 – 2006	22
TOURISM	
Penang: Average Occupancy Rate, Number of Registered Guests and Estimated Total Visitor Arrivals, 2001 – 2005	23
PROPERTY	
Penang: House Price Index, 1988 - 2003	23
Penang: Number of Transactions by Price Range for the Principal Property Sub-Sectors, 2004 & 2005	23
Penang: Value of Transactions by Price Range for the Principal Property Sub-Sectors, 2004 & 2005 (in RM million)	24
EDUCATION	
Penang: Number of Schools, Students & Teachers At The Primary Level, Jan 2005	25
Penang: Number of Schools, Students & Teachers At The Secondary Level, Jan 2005	25
Penang: Number of Students Taking Public Exams and Passing Rates, 2004 - 2005	25
Penang: Number of Private Education Institutions (as of 31 December 2004)	25
HEALTH	
Life Expectancy at Birth (Malaysia)	26
Life Expectancy at Birth (Penang)	25
Vital Statistics of Penang (per thousand), 1995 – 2006	25
Penang: Ratio of Medical Professionals-Population, 1996 – 2005	25
Penang: Health Facilities, 1999 – 2006	25
Penang: Number Of Hospital Beds (Government & Private) and Ratio of Hospital Beds to Population, June 2006	26
Penang: Number of Beds, Bed Occupancy Rate (BOR) & Average Length of Stay (ALOS) for Government Hospitals, June 2006	27
Penang: HIV / AIDS (Total Identified Cases), 1999 – 2006	27
Penang: 10 Main Causes of Hospital Deaths (Government), 2005	27
SELECTED NATIONAL STATISTICS	
Malaysia: Gross Domestic Product by Sector (Current Prices & 1987 Prices)	28
Malaysia: Currency Exchange Rates	28
Malaysia: National Indices & Employment Data	28
Malaysia: Federal Government Accounts	29
Malaysia: Producer Price Index	29
Malaysia: Consumer Price Index	30
Malaysia: Index of Industrial Production	31

Disclaimer :

All data are correct at the time of publication and are subject to adjustments and revision by the respective sources. The Socio-economic & Environmental Research Institute (SERI) will not be responsible for any loss or damage caused by the usage of any information obtained from this publication.

PHYSICAL ATTRIBUTES

Area:

State of Penang	1,030 sq km
Timur Laut	119 sq km
Barat Daya	173 sq km
Seberang Perai Utara	262 sq km
Seberang Perai Tengah	235 sq km
Seberang Perai Selatan	241 sq km

Location:

Latitudes	5°8' - 5°35'
Longitudes	100°8' - 100°32'

DEMOGRAPHY

Penang: Estimated Population (in '000) and Distribution by Districts

District	1991	2000	2004	2005	2006
	(census)	(census)	(estimate)	(estimate)	(estimate)
Timur Laut	395.7	444.9	476.2	483.0	486.6
Barat Daya	122.8	169.4	191.3	195.5	201.5
Seberang Perai Utara	224.6	259.8	283.4	288.0	292.8
Seberang Perai Tengah	236.3	313.6	348.8	356.0	362.4
Seberang Perai Selatan	84.8	125.7	143.1	146.3	149.1
State of Penang	1,064.2	1,313.4	1,442.8	1,468.8	1,492.4

Source: State Population Report, Penang, 1991, Department of Statistics (DOS), Malaysia; Population and Housing Census of Malaysia 2000: Population Distribution and Basic Demographic Characteristics, DOS, Malaysia; DOS, Penang.

Note: Slight discrepancies may occur due to rounding.

Penang: Estimated Population by Sex (in '000)

Gender	1991	2000	2004	2005	2006
	(census)	(census)	(estimate)	(estimate)	(estimate)
Male	526.0	654.1	715.2	727.3	738.2
Female	538.1	659.4	727.6	741.5	754.2
Total	1,064.2	1,313.4	1,442.8	1,468.8	1,492.4

Source: State Population Report, Penang, 1991, DOS, Malaysia; Population and Housing Census of Malaysia 2000: Population Distribution and Basic Demographic Characteristics, DOS, Malaysia; DOS, Malaysia; DOS, Penang.

Note: Slight discrepancies may occur due to rounding.

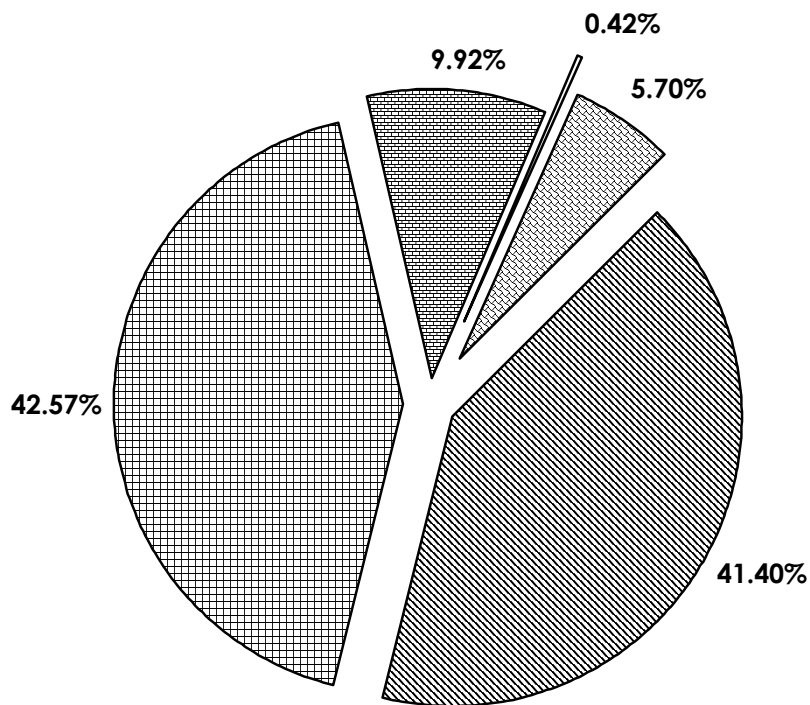
Penang: Estimated Population by Ethnic Group (in '000)

Ethnic Group	1991	2000	2004	2005	2006
	(census)	(census)	(estimate)	(estimate)	(estimate)
Malaysian:	1,048.3	1,265.1	1,370.1	1390.6	1,407.4
Malays	405.4	533.1	587.3	600.3	612.3
Other Bumiputera	1.1	3.9	5.0	5.3	5.6
Chinese	523.2	588.7	626.4	631.8	635.3
Indians	112.8	133.9	145.4	147.1	148.0
Others	5.8	5.4	6.0	6.1	6.2
Non-Malaysian Citizens	15.9	48.4	72.7	78.2	85.0
Total	1,064.2	1,313.4	1,442.8	1,468.8	1,492.4

Source: State Population Report, Penang, 1991, DOS, Malaysia; Population and Housing Census of Malaysia 2000: Population Distribution and Basic Demographic Characteristics, DOS, Malaysia; DOS, Penang.

Note: Slight discrepancies may occur due to rounding.

Population By Ethnic Group, 2006



■ Bumiputera ■ Chinese ■ Indian □ Others ■ Non-Malaysian

Source: Department Of Statistics, Penang

ECONOMIC

Penang: Growth Rate of Gross Regional Product (In 1987 – Constant Prices)

(RM Million)	2001	2002	2003	2004	2005
Agriculture, forestry, fishing	2.1	4.9	4.7	5.7	4.5
Mining & Quarrying	0.3	0.2	-3.0	-6.8	-0.5
Manufacturing	-4.2	6.1	7.2	9.7	6.5
Construction	-1.4	-4.0	2.6	-10.7	-1.1
Tertiary	2.3	5.7	4.4	7.5	7.3
Total	-0.6	5.6	5.4	7.9	6.7

Source: SERI

Note: Please note that SERI has revised the previous GDP growth estimates. The release of the State GRP figures in the 9th Malaysia Plan (9MP) as compiled by the Economic Planning Unit (EPU) provides SERI with a point of reference for its GRP projections for the State. SERI's estimates of GRP are compiled and projected based on data available at the State level. To a large extent, it is dependent upon the cooperation of both public and private sectors in voluntary and timely disclosure and reporting of data.

EMPLOYMENT

Penang: Percentage of Employed Persons by Industry (%), 2001 - 2005

Industry	2001	2002	2003	2004	2005
Agriculture, hunting and forestry	1.5	1.8	1.2	2.4	1.9
Fishing	0.7	0.6	0.8	1.5	0.7
Mining and quarrying	0.2	0.0	0.1	0.1	0.1
Manufacturing	40.8	40.4	37.1	37.7	36.2
Electricity, gas and water supply	0.5	0.4	0.5	0.4	0.6
Construction	6.4	7.0	6.6	7.1	6.8
Wholesale and retail trade; repair of motor vehicles, motorcycles and personal and household goods	15.6	16.0	16.4	15.0	15.2
Hotels and restaurants	7.4	6.8	8.6	8.2	7.7
Transport, storage and communication	4.7	5.3	5.3	5.5	5.7
Financial intermediation	2.3	2.6	2.3	2.2	2.2
Real estate, renting and business activities	4.4	4.3	4.5	4.2	3.8
Public administration and defense; compulsory social security	4.2	3.9	4.2	3.5	5.5
Education	4.2	4.2	4.7	5.0	5.2
Health and social work	2.8	2.6	2.6	1.9	2.9
Other community, social and personal service	2.0	1.9	2.1	2.2	2.7
Private households with employed persons	2.4	2.3	2.9	3.1	2.9
Extra-territorial organisations and bodies	0.0	0.0	0.0	0.0	0.0
Total	100.0	100.0	100.0	100.0	100.0

Source: Labour Force Survey, DOS, Malaysia

Note: Slight discrepancies may occur due to rounding.

PRIMARY SECTOR

AGRICULTURE

Penang: Agriculture Areas (hectares), 2001-2005

Type	Year				
	2001	2002	2003	2004	2005
Rubber	2,116	2,280	2,340	2,673	3,107
Oil Palm	14,821	13,725	14,329	13,868	14,074
Paddy	13,448	12,554	13,448	12,782	12,782
Coconut	2,339	2,309	2,313	2,175	2,119
Cocoa	104	75	75	61	58
Vegetables	458	423	404	460	481
Fruits	6,830	6,760	6,802	6,872	6,668
Cloves	190	196	148	163	169
Nutmeg	75	70	38	-	-
Cash Crops	247	190	242	309	235
Others	74	55	21	58	56
Total	40,702	38,638	40,159	39,442	39,749

Source: Derived from data from the Jabatan Pertanian Negeri Pulau Pinang, MPOB and RISDA

Note: Slight discrepancies may occur due to rounding.

LIVESTOCK

Penang: Livestock Survey, 2002-2004

Type of livestock	2002		2003		2004	
	No. of Livestock Farmers	No. of Livestock	No. of Livestock Farmers	No. of Livestock	No. of Livestock Farmers	No. of Livestock
Buffalo	33	282	34	300	24	351
Cow	893	9,888	896	10,886	837	9,468
Goat	165	3,891	142	3,763	182	4,592
Lamb	27	653	29	695	25	415
Pig	273	298,674	246	297,923	235	292,130
Chicken	368	9,601,730	454	14,177,026	357	9,496,590
Duck	42	266,335	49	456,100	31	159,000
Quail	15	80,000	2	9,600	7	67,600

Source: Livestock Survey , 2002 , 2003 & 2004 Department of Veterinary Services, Penang

Penang: Production and Value of Livestock, 2004 – 2005

Commodity	2004			2005		
	Production (Metric Tonnes)	Value (RM Million)	%	Production (Metric Tonnes)	Value (RM Million)	%
Meat						
Cow	848.94	10.10	2.41	731.00	8.7	1.84
Buffalo	57.69	0.69	0.16	37.44	0.45	0.09
Goat / Lamb	21.82	0.26	0.06	15.35	0.18	0.04
Pig	18,176.50	99.06	23.67	16,936.27	92.3	19.51
Chicken	49,583.88	228.09	54.50	64,283.26	295.7	62.50
Duck	414.57	2.01	0.48	2,437.31	11.82	2.50
Quail	12.07	0.11	0.03	69.6	0.61	0.13
Rabbit	1.60	0.02	0.00	0.00	0.00	0.00
Eggs	(No. of eggs)					
Chicken	284,998,820	71.25	17.03	294,412,860	58.88	12.45
Duck	10,848,000	4.34	1.04	16,440,000	4.11	0.87
Quail	20,120,000	2.21	0.53	0	0.00	0.00
Milk	(Liter)					
Fresh milk	455,440	0.34	0.08	455,440	0.34	0.07
	Total	418.48	100.00	Total	473.10	100.00

Source: Livestock Survey 2003 & 2004, Department of Veterinary Services, Penang

FISHERIES**Penang: Landings of Marine Fish, 1995 - 2006**

Year	Quantity ('000 tonnes)	Value (RM million)
1995	46.18	151.24
1996	37.61	154.88
1997	37.53	158.79
1998	35.47	189.18
1999	34.79	137.84
2000	35.90	148.27
2001	35.07	139.27
2002	31.99	130.10
2003	32.21	147.48
2004	30.76	121.49
2005	20.05	90.90
2006 (Jan – Sept)	22.69	159.21

Source: Department of Fisheries, Penang

Penang: Aquaculture Production and Value, 1995 – 2006

Year	Freshwater Pond Aquaculture		Brackishwater Cage Culture		Cockle Culture		Brackishwater Pond Culture	
	MT	RM Mil	MT	RM Mil	MT ('000)	RM Mil	MT	RM Mil
1995	31.10	0.12	1,105.10	15.29	15.30	7.61	606.37	10.91
1996	76.30	0.25	1,090.69	13.43	16.43	8.13	835.65	13.98
1997	108.01	0.38	1,145.67	14.61	13.11	9.59	643.05	11.96
1998	106.96	0.41	1,836.16	17.7	13.17	9.14	957.12	15.08
1999	110.68	0.33	1,247.42	14.45	13.99	9.73	498.76	8.82
2000	236.49	0.67	1,313.56	19.14	13.12	9.18	407.96	7.57
2001	191.39	0.60	2,093.25	28.84	11.6	8.12	778.02	12.74
2002	270.42	0.81	2,308.53	33.04	9.05	6.33	780.19	14.82
2003	348.99	1.04	2,617.44	41.92	9.42	6.60	859.01	17.33
2004	721.82	2.01	2,089.11	36.95	8.06	7.99	1,060.39	17.71
2005	966.81	2.33	1,895.29	32.73	10.99	10.67	1,378.60	20.24
2006 (Jan – Aug)	700.47	1.70	1,983.87	34.27	8.88	8.88	862.40	13.30

MT= Metric Tonnes

Source: Department of Fisheries, Penang

SECONDARY SECTOR

MANUFACTURING

Penang: Approved Manufacturing Projects, Employment & Capital Investment, 1995 - 2006

Year	Approved Projects			Potential Employment	Capital Investment (RM Million)
	Malaysia	Penang	% of national		
1995	898	89	9.9	13,779	1,606.65
1996	782	97	12.4	11,993	3,185.40
1997	759	90	11.9	9,736	1,449.10
1998	844	104	12.3	10,911	2,685.29
1999	725	95	13.1	14,928	4,777.80
2000	798	132	16.5	15,327	4,459.60
2001	928	124	13.4	14,630	3,837.30
2002	792	110	13.9	13,487	2,398.30
2003	965	137	14.2	9,890	1,923.00
2004	1,101	144	13.1	9,235	2,030.15
2005	1,026	148	14.4	21,904	4,808.18
2006	1,077	156	14.0	13,539	5,350.7

Source: MIDA Penang

Note: Slight discrepancies may occur due to rounding. Data is subject to adjustments and revisions by MIDA.

Penang: Approved Manufacturing Projects by Industry, 2004 - 2006

Industry	No. of Projects			Investment (RM million)		
	2004	2005	2006	2004	2005	2006
Electrical & Electronic	54	61	48	1,258.6	3,771.3	3,555.7
Basic Metal Products	3	9	8	19.7	94.0	129.6
Chemicals & Chemical Products	7	6	7	129.7	52.8	215.0
Fabricated Metal Products	21	23	31	127.7	73.1	285.3
Food Manufacturing	6	3	8	137.9	6.9	23.8
Machinery Manufacturing	17	19	18	139.1	135.6	178.7
Non-Metallic Mineral Products	1	1	1	6.2	8.4	4.7
Others	2	1	2	4.8	8.3	14.5
Paper, Printing & Publishing	7	4	2	69.6	12.6	68.0
Petroleum & Petrochemical Products	1	-	3	16.1	-	602.1
Plastic Products	9	8	6	42.2	426.0	119.3
Rubber Products	2	2	2	10.9	10.9	0.4
Scientific & Measurement Equipment	5	4	4	31.3	161.5	17.1
Textile & Garment	0	1	3	-	4.4	48.6
Transport Equipment	5	4	4	2.4	41.2	48.3
Wood & Wood Products	1	-	1	7.1	-	9.4
Beverages & Tobacco	0	2	1	-	1.1	0.8
Furniture & Fixtures	2	-	7	18.3	-	29.5
Leather & Leather Products	1	-	-	8.5	-	-
TOTAL	144	148	156	2,030.3	4,808.2	5,350.7

Source: MIDA Penang

Note: Slight discrepancies may occur due to rounding. Data is subject to adjustments and revisions by MIDA.

Approved Manufacturing Projects and Investment by State, 2004 - 2006

State	No. of Projects			Investment (RM Million)		
	2004	2005	2006	2004	2005	2006
F.T.-Kuala Lumpur	26	20	18	163.8	149.5	503.9
F.T.-Labuan	-	2	3	-	20.3	2,222.9
Selangor	335	335	331	6,050.3	8,467.4	5,253.6
Pulau Pinang	144	148	156	2,030.3	4,808.2	5,350.7
Perak	54	52	6	1,316.0	1,397.4	1,181.3
Johor	256	234	221	3,987.1	8,291.3	7,638.3
Negeri Sembilan	44	26	37	1,054.3	351.6	1,799.9
Melaka	56	52	55	1,194.1	1,039.0	1,401.1
Kedah	65	44	59	5,245.4	1,763.4	9,880.2
Pahang	18	18	33	994.7	2,203.2	1,792.6
Kelantan	9	8	6	106.6	124.9	47.1
Terengganu	5	8	7	138.4	327.7	2,933.8
Perlis	1	2	3	0.5	31.4	61.2
Sabah	40	41	75	338.5	1,204.5	5,068.8
Sarawak	45	34	31	5,901.2	859.7	857.8
Undecided	3	2	-	252.4	17.2	-
Total	1,101	1,026	1,077	28,773.5	31,056.7	45,993.0

Source: MIDA Penang

Note: Slight discrepancies may occur due to rounding. Data is subject to adjustments and revisions by MIDA.

TERTIARY SECTOR

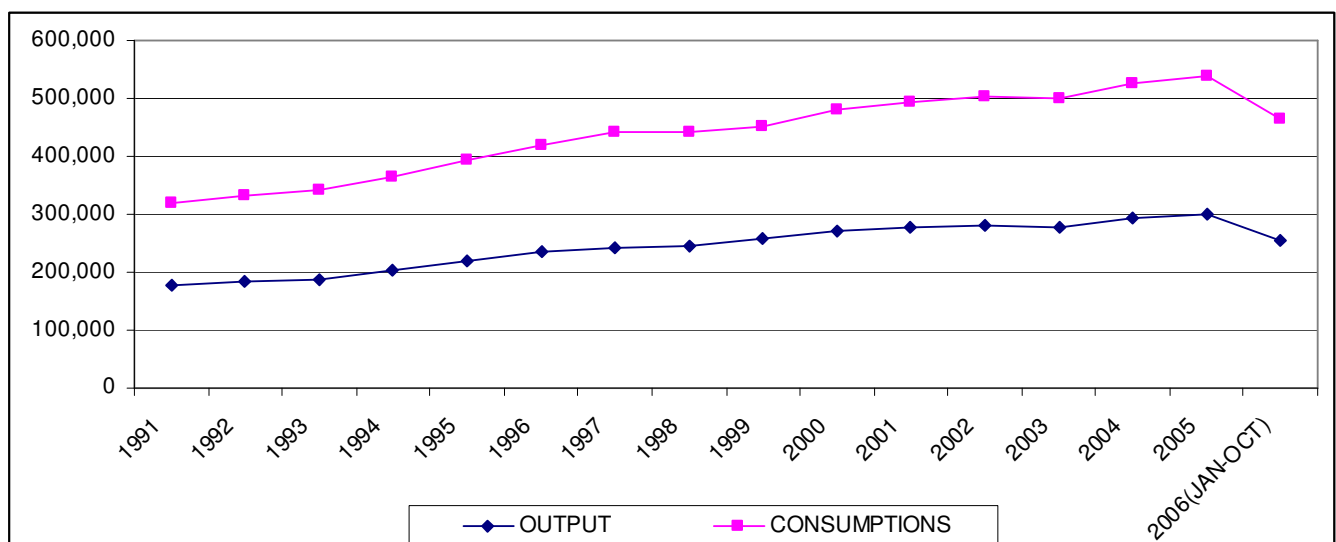
UTILITIES

WATER

Penang: Water Output And Consumption ('000 cubic Metres), 1991 - 2006

Year	Output	% Increase	Consumption	% Increase
1991	177,829	-	141,866	-
1992	185,413	4.3%	147,424	3.9%
1993	188,685	1.8%	152,477	3.4%
1994	204,006	8.1%	159,598	4.7%
1995	220,550	8.1%	172,321	8.0%
1996	236,124	7.1%	184,541	7.1%
1997	242,531	2.7%	198,038	7.3%
1998	245,425	1.2%	195,668	-1.2%
1999	257,307	4.8%	195,801	0.1%
2000	271,258	5.4%	208,183	6.3%
2001	278,395	2.6%	216,380	3.9%
2002	280,161	0.6%	224,632	3.8%
2003	277,066	-1.1%	223,390	-0.6%
2004	292,858	5.7%	233,057	4.3%
2005	298,985	2.1%	240,999	3.4%
2006(Jan-Oct)	255,563	2.30%	207,782	3.3%

Source: Derived from data provided by Perbadanan Bekalan Air Pulau Pinang Sdn Bhd (PBAPP)



Source: Derived from data provided by Perbadanan Bekalan Air Pulau Pinang Sdn Bhd

Penang: Daily Water Supply, 2005 – 2006

	2005			2006 (As At October)		
	Penang Island	Seberang Perai	Penang State	Penang Island	Seberang Perai	Penang State
No. of Treatment Plants	5	4	9	5	4	9
Max. Capacity of Treatment Plants (cu.m/day)	309,429	956,370	1,265,799	309,364	956,818	1,266,182
Average Daily Production (cu.m)	96,002	723,134	819,136	99,670	740,999	840,669
Average Daily Consumption (cu.m)	316,055	344,215	660,271	329,177	354,318	683,495
No. of Services (consumers)	212,523	218,136	430,659	219,082	225,304	444,386
Daily Consumption (cu.m)						
Per Consumer	1.49	1.58	1.53	1.50	1.57	1.54
Per Industrial Consumer	5.72	4.74	5.23	5.74	4.72	5.23
Per Domestic Consumer	1.01	1.10	1.05	1.00	1.10	1.06

Source: Derived from data provided by Perbadanan Bekalan Air Pulau Pinang Sdn Bhd

ELECTRICITY**Penang: Electricity Supplied and Consumed**

Transaction	2006 (Jan – Mar)
Total Supply (GWh)	2,111,440
Consumption of Electricity (Gwh)	
Own Consumption by Private Installation (GWh)	1,966
Distribution by Public Installation by Types of Consumers (GWh)	
Domestic	297,149
Commercial	444,601
Industrial	1,219,814
Public Lighting	9,907
Total	1,971,471
Electricity Exported	0
Losses in Transmissions and Statistical Discrepancies	138,003

Note: Excluding demand of 132kV customers supplied via direct 132kV connection

Source: Tenaga Nasional Berhad, Penang

Penang: Power Demand & Supply, 2000 - 2010

Year	Maximum Demand (MW)	Installed Capacity (MW)	Excess Capacity %
2000	950	2,518	62%
2001	1,012	2,828	64%
2002	1,049	2,666	61%
2003	1,085	2,788	61%
2004	1,108	2,795	60%
2005	1,121	2,957	62%
2006	1,202	3,254	63%
2007	1,284	3,294	61%
2008	1,361	3,294	59%
2009	1,437	3,267	56%
2010	1,529	3,267	53%

Note: Excluding demand of 132kV customers supplied via direct 132kV connection

Source: Tenaga Nasional Berhad, Penang

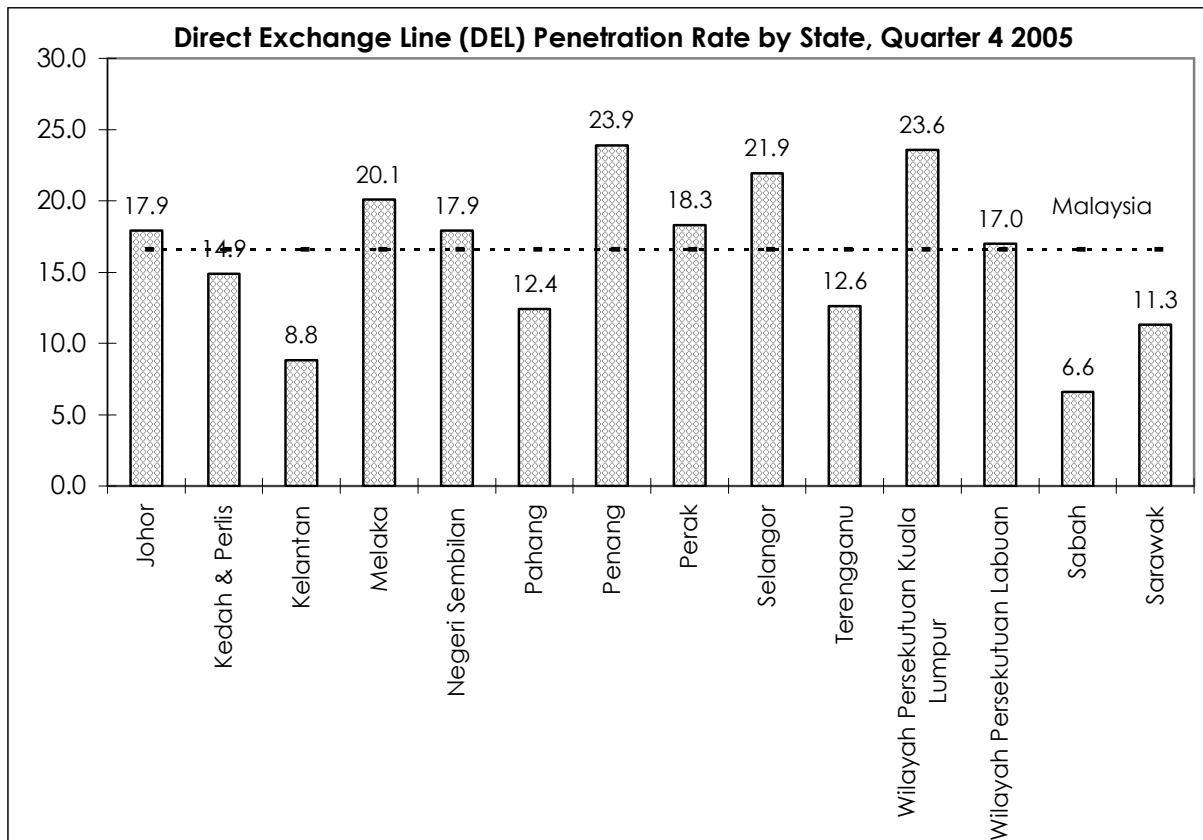
TELECOMMUNICATIONS

Direct Exchange Line (DEL) Penetration Rate by State, 2003 - 2005

State	2003	2004	2005			
			Quarter 1	Quarter 2	Quarter 3	Quarter 4
Johor	19.5	18.5	18.3	18.0	17.9	17.9
Kedah & Perlis	15.2	14.3	13.6	13.4	13.6	14.9
Kelantan	10.1	9.2	9.0	8.9	8.8	8.8
Melaka	22.2	20.4	20.3	20.1	20.1	20.1
Negeri Sembilan	19.2	18.2	18.2	18.0	18.0	17.9
Pahang	13.7	12.8	12.8	12.6	12.5	12.4
Penang	25.9	24.2	24.2	23.9	23.9	23.9
Perak	20.0	19.4	18.9	18.4	18.4	18.3
Selangor	23.6	21.9	22.2	22.0	22.0	21.9
Terengganu	13.8	12.9	12.7	12.5	12.5	12.6
Wilayah Persekutuan Kuala Lumpur	25.9	24.6	24.2	23.9	23.7	23.6
Wilayah Persekutuan Labuan	17.7	17.0	16.9	16.9	16.5	17.0
Sabah	7.2	6.7	6.7	6.6	6.5	6.6
Sarawak	12.2	11.5	11.4	11.4	11.3	11.3
Malaysia	18.1	17.2	16.8	16.5	16.5	16.6

Note: Direct Exchange Line (DEL) connects a customer's equipment to the Public Switched telephone Network (PSTN) and has a dedicated port on a telephone exchange. The penetration rate refers to the total DELs to residential as well business.

Source: Malaysian Communications and Multimedia Commission (MCMC)

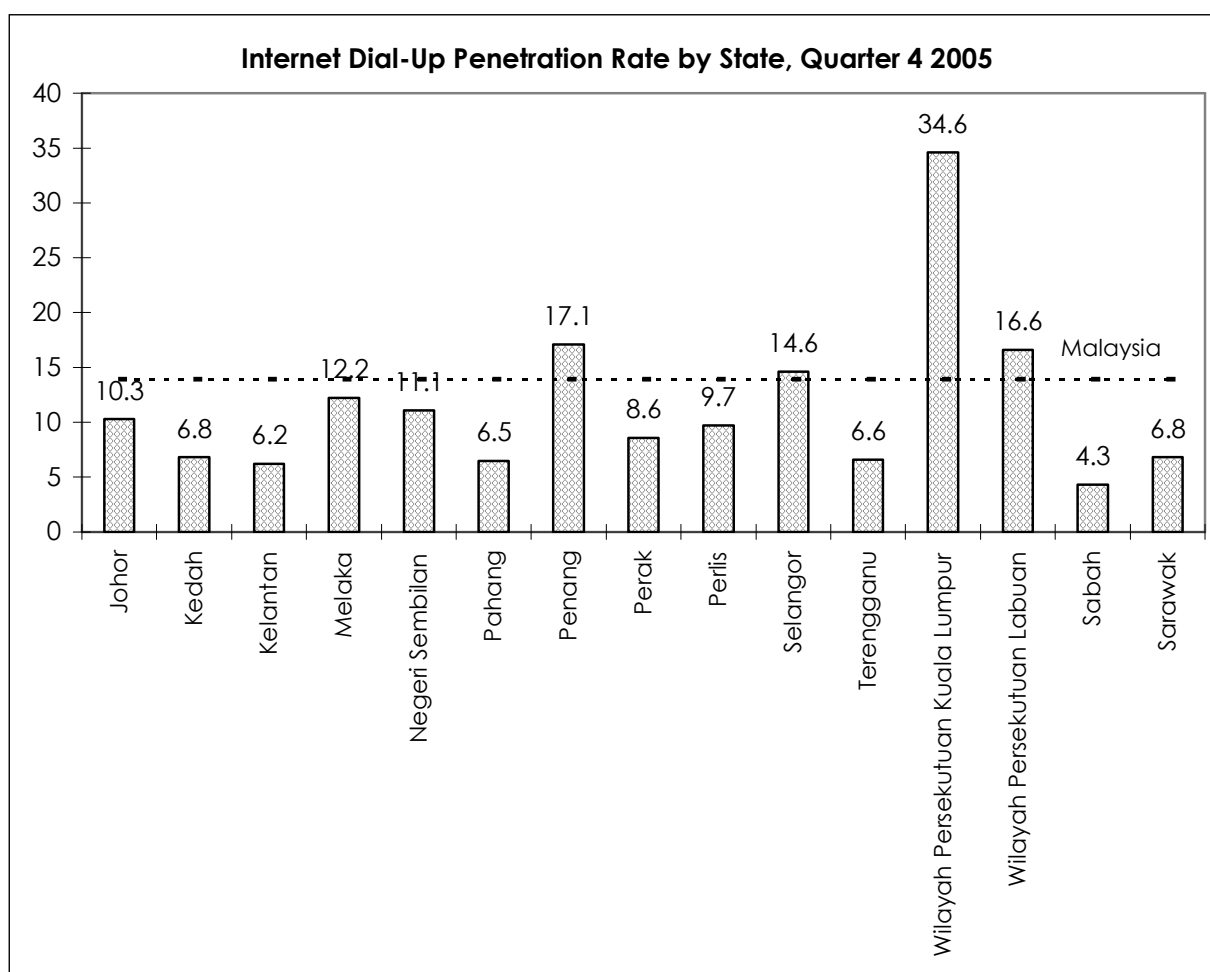


Source: Malaysian Communications and Multimedia Commission (MCMC)

Internet Dial-Up Penetration Rate by State, 2003 - 2005

State	2003	2004	2005			
			Quarter 1	Quarter 2	Quarter 3	Quarter 4
Johor	9.6	9.9	10.1	10.2	10.2	10.3
Kedah	6.3	6.6	6.6	6.7	6.7	6.8
Kelantan	6.9	6.7	6.2	6.2	6.2	6.2
Melaka	11.5	11.8	11.9	12	12.1	12.2
Negeri Sembilan	10.5	10.8	10.9	11	11.1	11.1
Pahang	6.7	6.3	6.4	6.4	6.4	6.5
Penang	15.8	16.3	16.6	16.7	17.1	17.1
Perak	8.0	8.5	8.6	8.7	8.5	8.6
Perlis	8.3	9.3	9.4	9.5	9.7	9.7
Selangor	14.2	14.3	14.5	14.6	14.6	14.6
Terengganu	6.6	6.5	6.5	6.6	6.6	6.6
Wilayah Persekutuan Kuala Lumpur	32.8	34.5	34.2	34.5	34.6	34.6
Wilayah Persekutuan Labuan	17.8	16.6	16.5	16.6	16.6	16.6
Sabah	3.6	4.2	4.2	4.3	4.3	4.3
Sarawak	6.2	6.7	6.7	6.7	6.8	6.8
Malaysia	11.4	12.7	13.2	13.7	13.8	13.9

Source: Malaysian Communications and Multimedia Commission (MCMC), PIKOM

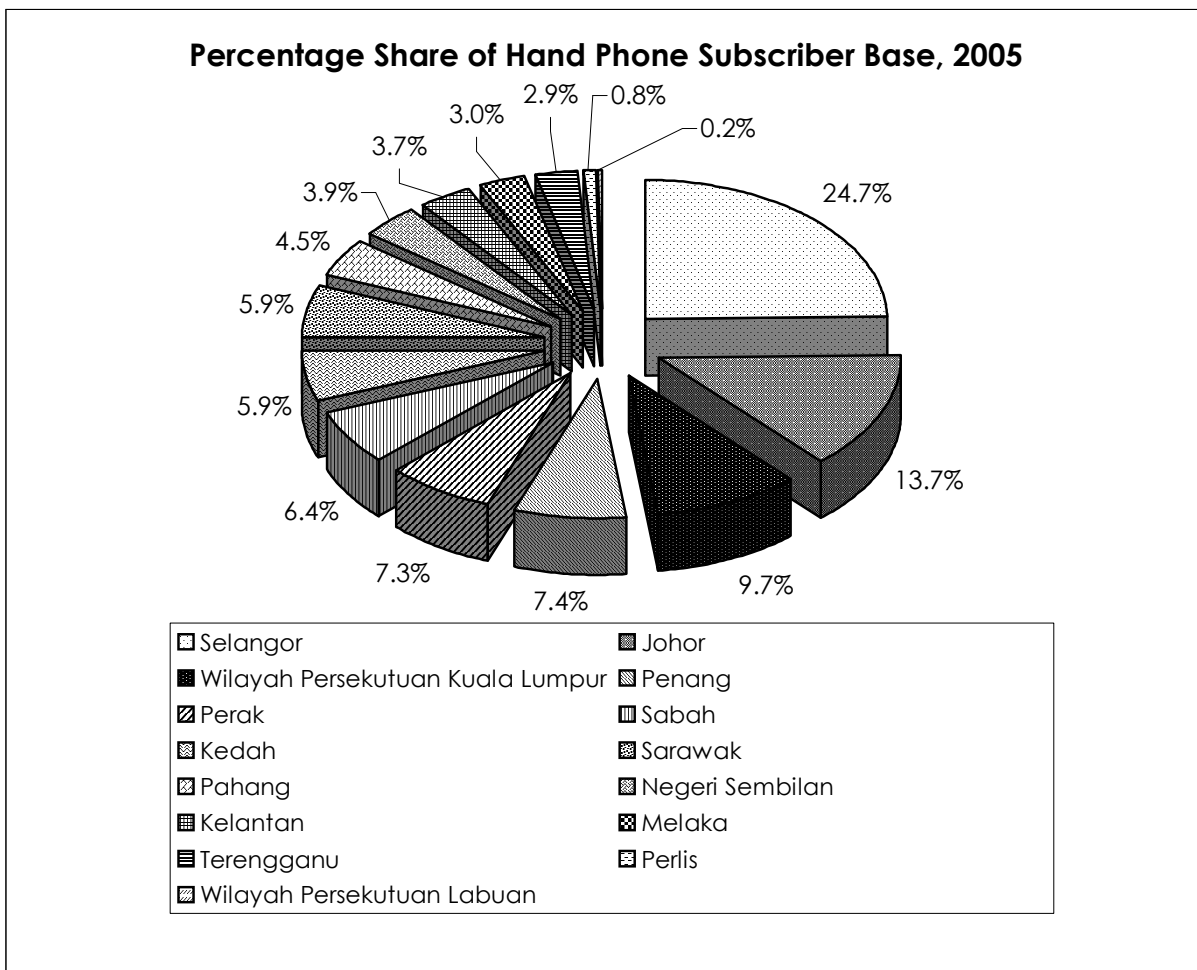


Source: Malaysian Communications and Multimedia Commission (MCMC), PIKOM

Percentage Share of Hand Phone Subscriber Base, 2005

State	Percentage Share of Hand Phone Subscriber Base
Selangor	24.7
Johor	13.7
Wilayah Persekutuan Kuala Lumpur	9.7
Penang	7.4
Perak	7.3
Sabah	6.4
Kedah	5.9
Sarawak	5.9
Pahang	4.5
Negeri Sembilan	3.9
Kelantan	3.7
Melaka	3.0
Terengganu	2.9
Perlis	0.8
Wilayah Persekutuan Labuan	0.2

Source: MCMC (Derived from Hand Phone Users Survey 2005)



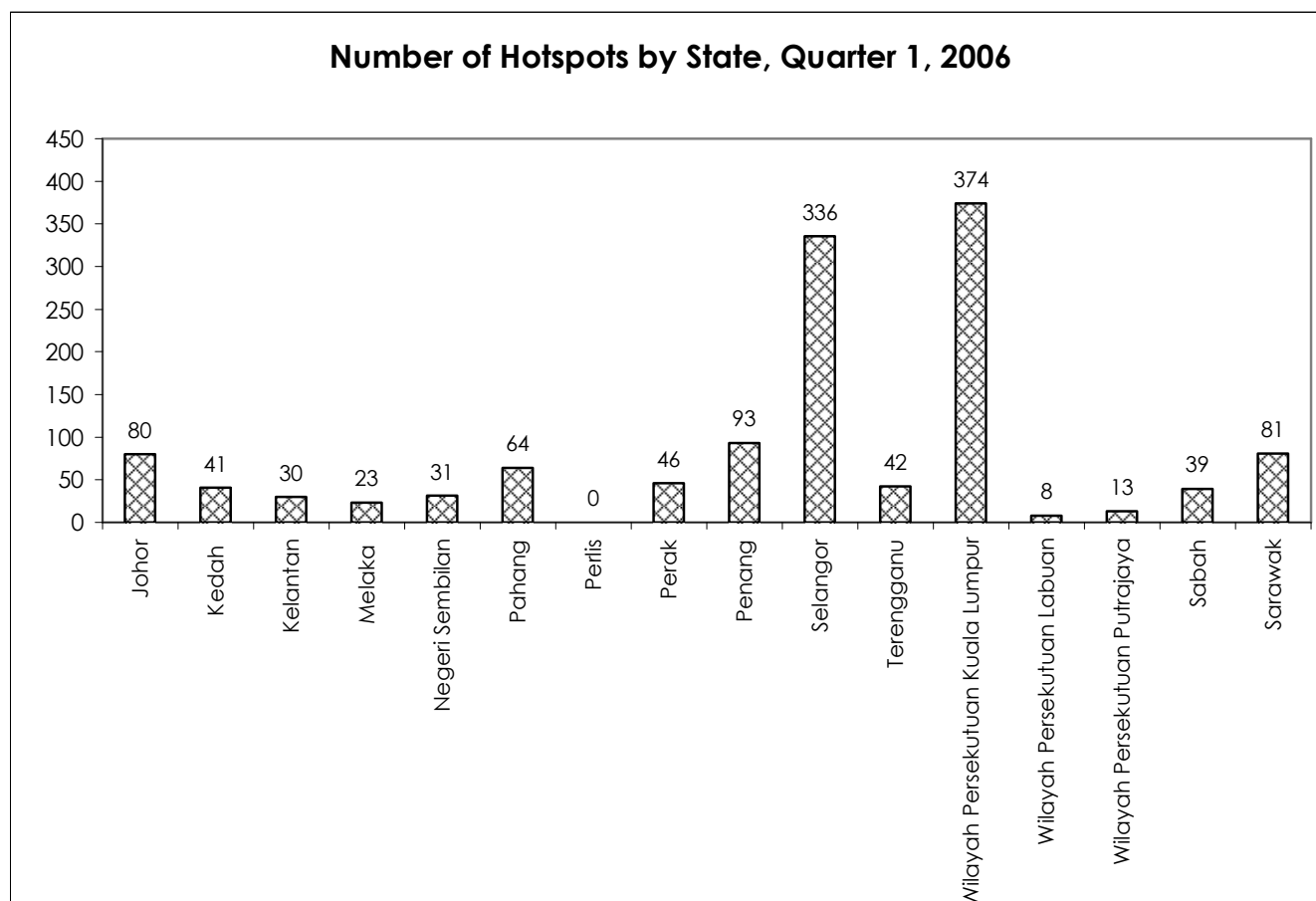
Source: MCMC (Derived from Hand Phone Users Survey 2005)

Number of Hotspot Locations by State, 2005 - 2006

State	2005	Quarter 1, 2006
Johor	79	80
Kedah	36	41
Kelantan	30	30
Melaka	20	23
Negeri Sembilan	24	31
Pahang	58	64
Perlis	0	0
Perak	44	46
Penang	88	93
Selangor	319	336
Terengganu	43	42
Wilayah Persekutuan Kuala Lumpur	352	374
Wilayah Persekutuan Labuan	9	8
Wilayah Persekutuan Putrajaya	13	13
Sabah	37	39
Sarawak	75	81

Source: Malaysian Communications and Multimedia Commission (MCMC)

Number of Hotspots by State, Quarter 1, 2006



Source: Malaysian Communications and Multimedia Commission (MCMC)

ROAD TRANSPORT

New Motor Vehicle Registration, 2006

Month	Region	Motorcycle	Private Passenger Car	Taxi	Bus	Lorry & Van	Hire Cars	Others	Total
January	Penang	4,344	3,874	15	3	0	172	65	8,473
	Malaysia	38,865	38,728	154	384	150	2,547	1,104	81,932
February	Penang	4,247	3,336	3	6	2	134	63	7,791
	Malaysia	38,125	32,533	75	381	243	2,109	1,063	74,619
March	Penang	5,217	4,510	7	11	4	211	40	9,910
	Malaysia	46,114	43,697	184	553	225	3,307	1,533	95,613
April	Penang	4,470	4,197	9	7	6	213	53	8,955
	Malaysia	38,113	38,591	140	377	126	2,869	1,153	81,369
May	Penang	4,196	4,357	10	11	4	323	63	8,964
	Malaysia	37,723	41,842	196	436	151	3,029	1,456	84,833
June	Penang	3,904	4,439	4	15	8	284	56	8,710
	Malaysia	35,144	39,928	172	460	221	3,165	1,401	80,491
July	Penang	4,102	4,131	5	16	0	259	34	8,547
	Malaysia	38,567	38,422	116	272	264	3,063	1,352	82,056
August	Penang	4,248	4,807	12	30	17	246	40	9,400
	Malaysia	40,164	45,094	153	389	281	3,211	1,449	90,741
September	Penang	3,963	3,961	12	20	7	240	66	8,269
	Malaysia	38,085	40,327	319	397	234	3,347	1,632	84,341
October	Penang	3,322	3,096	6	10	9	163	42	6,648
	Malaysia	33,682	33,898	181	260	203	2,906	1,471	72,601
November	Penang	3,703	3,606	2	11	0	278	36	7,636
	Malaysia	31,898	31,886	147	295	159	3,097	2,901	70,383
December	Penang	3,853	4,090	5	11	0	199	54	8,212
	Malaysia	32,181	33,348	202	433	157	3,027	3,186	72,534

Source: Derived from the statistics provided by Jabatan Pengangkutan Jalan, Malaysia

Motor Vehicle Re-registration, 2006

Month	Region	Motorcycle	Private Passenger Car	Taxi	Bus	Lorry & Van	Hire Cars	Others	Total
January	Penang	883,808	637,135	3,064	4,788	49,749	391	15,620	1,594,555
	Malaysia	7,053,972	6,515,799	67,760	57,620	807,562	11,532	394,667	14,908,912
February	Penang	887,372	640,308	3,068	4,793	49,846	391	15,673	1,601,451
	Malaysia	7,087,002	6,547,578	67,975	57,718	809,195	11,566	395,502	14,976,536
March	Penang	892,309	644,696	3,075	4,804	50,038	386	15,707	1,611,015
	Malaysia	7,130,901	6,590,796	68,323	57,970	812,041	11,359	396,730	15,068,120
April	Penang	896,781	648,917	3,080	4,813	50,231	387	15,768	1,619,977
	Malaysia	7,169,081	6,630,207	68,557	58,130	814,532	11,280	397,760	15,149,547
May	Penang	901,156	653,465	3,086	4,822	50,533	386	15,840	1,629,288
	Malaysia	7,208,531	6,674,419	68,840	58,365	817,297	11,211	399,179	15,237,842
June	Penang	904,881	657,773	3,097	4,829	50,796	395	15,893	1,637,664
	Malaysia	7,242,177	6,713,730	69,130	58,576	819,920	11,272	400,345	15,315,150
July	Penang	909,200	662,067	3,116	4,832	51,048	395	15,938	1,646,596
	Malaysia	7,282,896	6,754,569	69,263	58,749	822,776	11,419	401,637	15,401,309
August	Penang	913,370	666,907	3,151	4,846	51,272	414	15,962	1,655,922
	Malaysia	7,322,243	6,800,398	69,520	58,945	825,532	11,547	402,999	15,491,184
September	Penang	917,205	670,724	3,167	4,863	51,485	417	16,025	1,663,886
	Malaysia	7,359,310	6,839,990	69,747	59,300	828,414	11,534	404,580	15,572,875
October	Penang	920,790	673,924	3,179	4,873	51,638	415	16,067	1,670,886
	Malaysia	7,394,456	6,875,430	69,924	59,535	831,135	11,548	406,066	15,648,094
November	Penang	924,525	677,681	3,190	4,875	51,867	380	16,129	1,678,647
	Malaysia	7,426,589	6,908,361	70,102	59,731	833,922	11,577	408,922	15,719,204
December	Penang	928,280	681,748	3,198	4,885	52,050	369	16,212	1,686,742
	Malaysia	7,458,128	6,941,996	70,409	59,991	836,579	11,638	411,991	15,790,732

Source: Derived from the statistics provided by Jabatan Pengangkutan Jalan, Malaysia

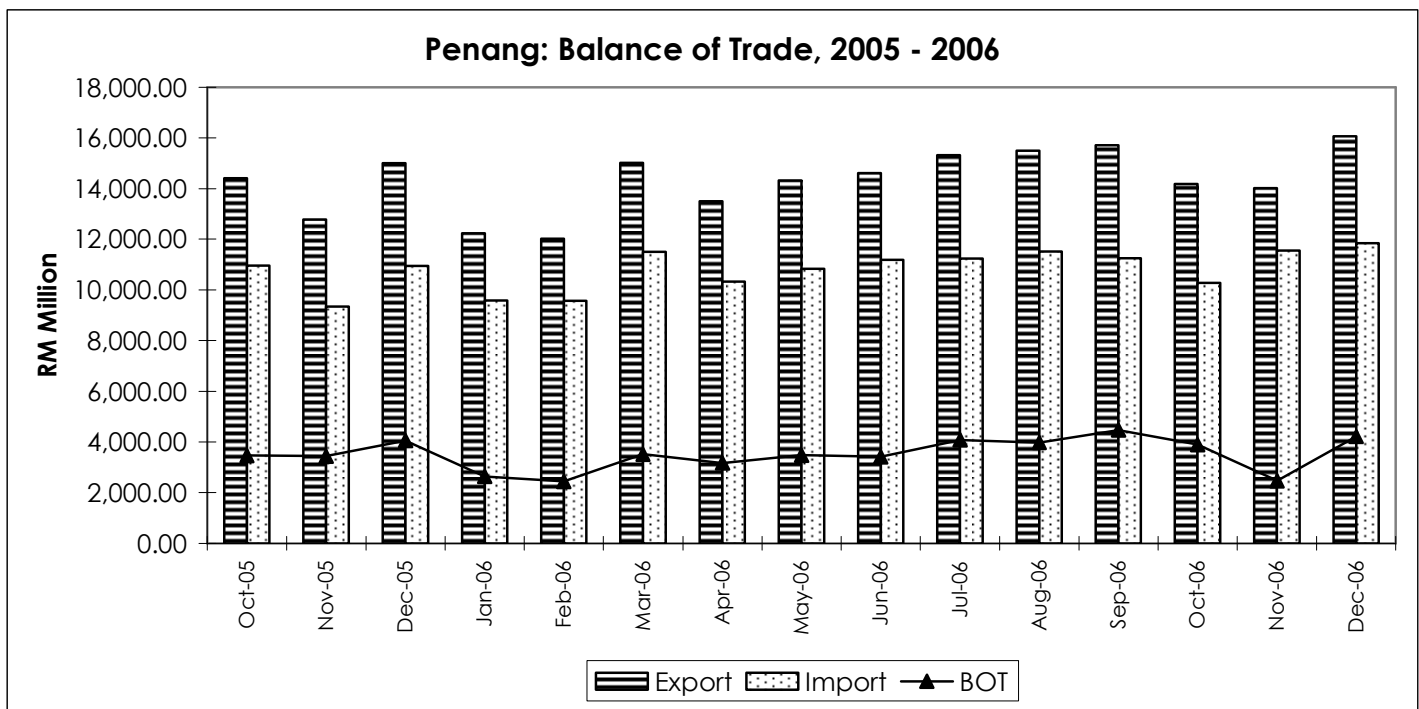
TRADE

TRADE BALANCE

2005	MALAYSIA			PENANG		
	Export	Import	BOT	Export	Import	BOT
Oct	49,722.99	39,203.45	10,519.54	14,416.95	10,954.49	3,462.47
Nov	43,424.36	34,791.96	8,632.40	12,778.53	9,338.35	3,440.18
Dec	49,467.72	40,037.39	9,430.33	15,000.75	10,946.75	4,053.99
TOTAL	142,615.07	114,032.8	28,582.27	42,196.23	31,239.59	10,956.64
2006	MALAYSIA			PENANG		
	Export	Import	BOT	Export	Import	BOT
Jan	43,160.77	34,344.14	8,816.62	12,232.83	9,585.37	2,647.45
Feb	42,269.38	34,884.31	7,385.07	12,012.51	9,567.31	2,445.20
Mar	51,275.35	41,695.35	9,580.00	15,010.92	11,502.72	3,508.21
Apr	45,711.36	39,083.74	6,627.62	13,505.33	10,335.76	3,169.56
Mei	48,239.37	40,250.06	7,989.31	14,320.82	10,838.77	3,482.04
Jun	49,218.57	40,979.47	8,239.11	14,607.07	11,188.45	3,418.62
July	50,525.92	41,489.78	9,036.13	15,316.91	11,241.11	4,075.80
Aug	53,444.15	43,345.28	10,098.86	15,488.79	11,508.43	3,980.36
Sept	53,119.83	42,881.29	10,238.54	15,719.05	11,252.49	4,466.56
Oct	48,052.35	38,625.22	9,427.13	14,182.70	10,289.48	3,893.21
Nov	51,423.24	42,249.35	9,173.89	14,018.89	11,551.53	2,467.37
Dec	52,525.19	40,944.54	11,580.65	16,055.78	11,838.25	4,217.53
TOTAL	588,965.48	480,772.54	108,192.95	172,471.63	130,699.69	41,771.91

Source: Department of Statistics, Malaysia

Note: Data for 2005 is preliminary. Data is subject to adjustments and revisions by DOS.



Source: Derived from data provided by Department of Statistics, Malaysia

PENANG AIRPORT

Aircraft Movement per annum, 1991 - 2006

Year	No. of Movement
1991	30,818
1992	36,826
1993	35,034
1994	35,950
1995	35,556
1996	36,956
1997	35,445
1998	31,816
1999	27,465
2000	27,951
2001	29,102
2002	28,840
2003	26,474
2004	29,182
2005	31,111
2006	29,222

Source: Derived from series of Airport Statistics, Malaysia Airports Berhad

Number of Passengers (Domestic & International) per annum, 1991 - 2006

Year	No. of Passengers (millions)		
	Domestic	International	Total
1991	1.27	0.90	2.17
1992	1.56	1.08	2.64
1993	1.65	1.13	2.78
1994	1.58	1.20	2.78
1995	1.60	1.25	2.85
1996	1.70	1.18	2.88
1997	1.68	1.23	2.91
1998	1.35	1.10	2.45
1999	1.35	1.10	2.45
2000	1.48	1.27	2.74
2001	1.35	1.20	2.55
2002	1.31	1.21	2.51
2003	1.43	1.00	2.43
2004	1.66	1.34	2.99
2005	1.56	1.28	2.83
2005 (Jan - July)	0.89	0.72	1.60
2006 (Jan - July)	0.93	0.84	1.78

Note: Slight discrepancies may arise due to rounding.

Source: Derived from series of Airport Statistics, Malaysia Airports Berhad

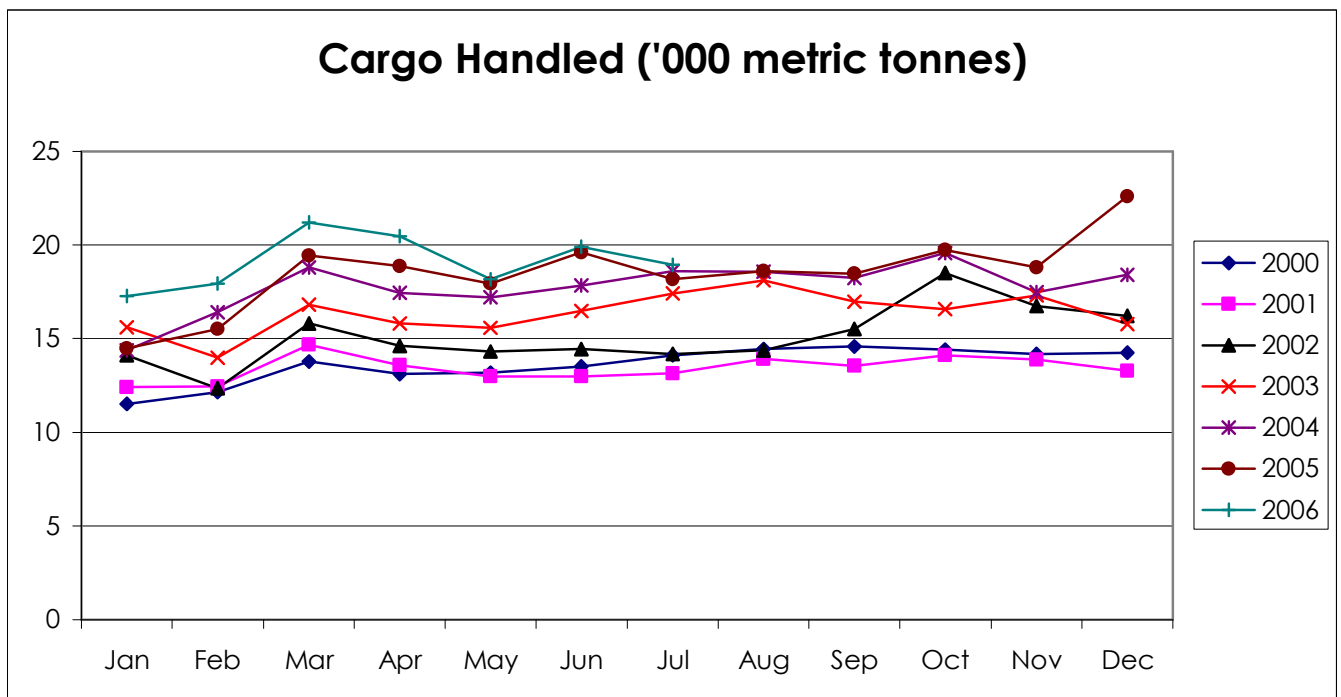
Cargo Handled (Domestic & International) per annum, 1991 – 2006

Year	Cargo Handled (in '000 metric tonnes)*		
	Domestic	International	Total
1991	12.06	25.72	37.78
1992	11.84	30.78	42.62
1993	13.21	33.42	46.63
1994	13.38	47.58	60.96
1995	16.13	70.70	86.83
1996	14.16	82.37	96.53
1997	15.96	106.21	122.17
1998	13.07	125.73	138.80
1999	40.63	104.87	145.50
2000	37.87	125.43	163.30
2001	34.87	126.15	161.02
2002	42.85	138.31	181.16
2003	30.79	165.60	196.39
2004	38.52	174.42	212.94
2005	47.69	174.52	222.20
2005 (Jan – July)	26.26	97.74	123.99
2006 (Jan - July)	19.45	114.49	133.94

*The figures from 1993 onwards are based on new categorization method.

*Note: Slight discrepancies may arise due to rounding.

Source: Derived from series of Airport Statistics, Malaysia Airports Berhad.



Source: Malaysia Airports Berhad

PENANG PORT**Annual Number of Shipcalls, 1990 - 2006**

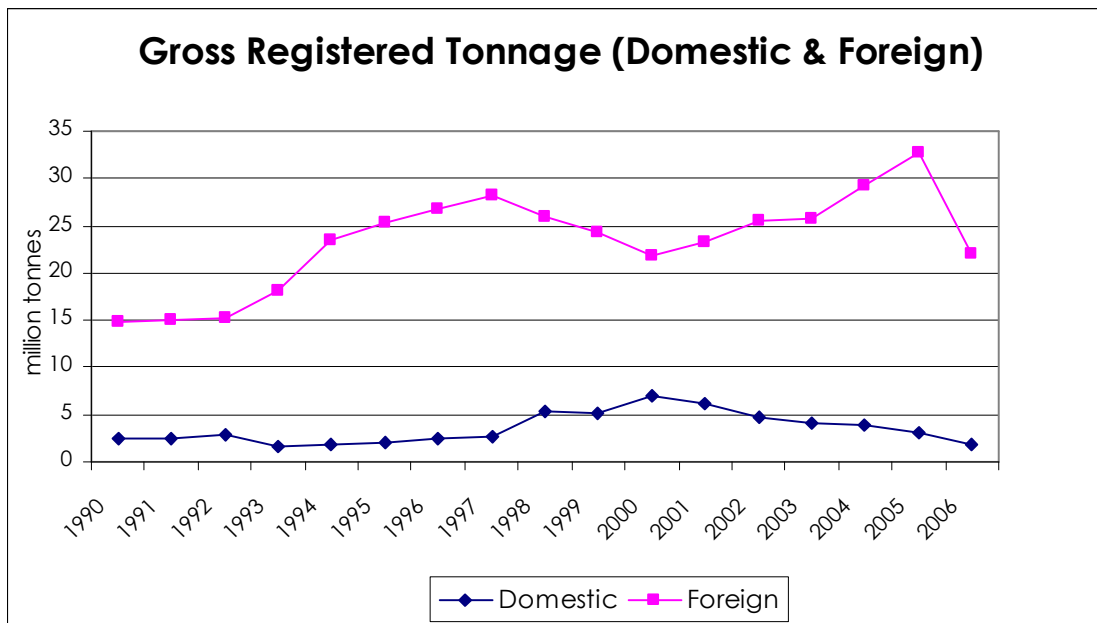
Year	Domestic	Foreign	Total
1990	2,437	3,091	5,528
1991	2,750	3,051	5,801
1992	3,058	3,208	6,266
1993	1,327	4,716	6,043
1994	1,379	4,820	6,199
1995	1,443	5,022	6,465
1996	1,416	5,117	6,533
1997	1,725	5,346	7,071
1998	2,553	5,072	7,625
1999	2,635	4,736	7,371
2000	3,250	4,013	7,263
2001	3,019	4,399	7,418
2002	2,824	4,748	7,572
2003	2,220	4,199	6,419
2004	3,182	3,831	7,013
2005	2,400	3,822	6,222
2005 (Jan – July)	1,401	2,166	3,567
2006 (Jan – July)	1,390	2,449	3,839

Source: Derived from the statistics provided by Penang Port Sdn Bhd

Gross Registered Tonnage (Domestic & Foreign) in Million, 1990 - 2006

Year	Domestic	Foreign	Total
1990	2.38	14.78	17.16
1991	2.41	15.05	17.46
1992	2.81	15.33	18.14
1993	1.75	18.02	19.77
1994	1.95	23.40	25.35
1995	2.06	25.26	27.32
1996	2.43	26.76	29.19
1997	2.59	28.23	30.82
1998	5.29	25.93	31.22
1999	5.18	24.35	29.53
2000	7.09	21.87	28.96
2001	6.11	23.37	29.48
2002	4.72	25.58	30.29
2003	4.14	25.80	29.94
2004	3.95	29.16	33.10
2005	3.11	32.83	35.94
2005 (Jan – July)	1.76	18.03	19.79
2006 (Jan – July)	1.76	22.06	23.82

Source: Derived from the statistics provided by Penang Port Sdn Bhd



Source: Derived from the statistics provided by Penang Port Sdn Bhd

Type of Cargo Handled, 1990 - 2006

Year	General Cargo	(million freight tonnes)			Total	Container
		Dry Bulk	Liquid Bulk	Containerised		
1990	2.21	2.06	2.73	3.85	10.85	222,441
1991	2.02	2.31	2.94	4.79	12.06	251,849
1992	1.99	2.46	3.14	5.63	13.22	303,367
1993	1.96	2.90	3.28	6.22	14.36	330,915
1994	1.93	2.60	3.31	7.29	15.14	386,182
1995	2.12	2.99	3.46	8.10	16.67	433,474
1996	2.11	3.20	3.52	8.67	17.50	454,765
1997	2.59	3.37	4.11	9.62	19.69	506,863
1998	1.67	2.23	3.86	8.69	16.45	510,307
1999	1.85	2.77	3.99	10.15	18.76	566,409
2000	1.84	3.46	4.11	11.06	20.47	635,423
2001	2.00	3.75	4.10	10.61	20.45	604,294
2002	2.07	4.00	4.39	11.34	21.80	634,042
2003	1.89	4.08	4.18	12.24	22.39	688,171
2004	1.81	3.73	4.38	13.50	23.42	772,024
2005	1.79	3.80	4.11	13.87	23.57	795,289
2006 (As at Nov)	1.53	3.60	3.57	9.6	18.27	773,637

Source: Derived from the statistics provided by Penang Port Sdn Bhd

TOURISM

Penang: Average Occupancy Rate, Number of Registered Guests and Estimated Total Visitor Arrivals, 2002 - 2006

	2002	2003	2004	2005	2006
Average Occupancy Rate	53.9%	49.8%	60.2%	60.2%	63.9%
Average Occupancy Rate for Beach Hotels	54.1%	46.7%	60.5%	55.0%	56.0%
Average Occupancy for City Hotels	53.8%	51.9%	60.0%	63.4%	68.6%
Estimated Total Visitor Arrivals for the State	3.42 mil	3.03 mil	3.52 mil	3.09 mil	2.74 mil
Estimated Domestic Share	47.9%	61.7%	56.6%	63.0%	67.2%
Estimated International Share	52.1%	38.3%	43.4%	37.0%	32.8%

Source: PDC Consultancy Sdn. Bhd. (Formerly known as DCT Consultancy Services Sdn. Bhd.) & SERI

* It should be noted that the decline in visitor arrivals in general and international visitor arrivals in particular in 2006 compared to 2005 was partly due to the different basis of estimation for the two periods. Thus, the two sets of figures are deemed incompatible due to the different bases of estimation for the two periods.

PROPERTY

Penang: House Price Index, 1988 - 2003

Year	Indices				
	Terraced	High-Rise	Detached	Semi-Detached	All Houses
Weight (2000=100)	38.1	50.7	2.9	8.4	100.0
1988*	90.0	77.9	72.9	87.2	87.7
1989*	92.0	88.1	77.5	92.5	92.2
1990*	100.0	100.0	100.0	100.0	100.0
1991*	110.6	117.6	118.2	111.3	111.7
1992*	113.9	125.5	135.1	116.0	115.7
1993*	118.5	132.7	145.2	125.3	124.3
1994*	126.0	145.0	162.5	143.3	132.5
1995*	149.7	160.0	180.9	151.1	145.0
1996*	153.7	156.4	197.2	170.0	152.1
1997*	165.7	170.8	206.1	184.6	169.2
1998*	157.7	162.7	179.2	167.3	159.4
1999*	161.0	163.4	173.4	169.3	165.4
1999	99.3	98.7	95.5	93.2	97.8
2000**	100.0	100.0	100.0	100.0	100.0
2001	102.9	108.7	85.5	93.2	102.9
2002	115.6	95.1	97.6	96.0	102.6
2003	118.3	124.7	95.3	91.4	115.5

Source: The Malaysian House Price Index

* - Indices with 1990 as the base year

** - New Base year for the revised IHRM 2000

Penang: Number of Transactions by Price Range for the Principal Property Sub-Sectors, 2004 & 2005

Price Range (RM)	Year	Residential	Commercial	Industrial	Agricultural	Development	Others	Total
0 - 25,000	2004	560	20	1	80	218	16	895
	2005	504	44	1	224	319	8	1,100
25,001 - 50,000	2004	1,719	33	5	106	239	13	2,115
	2005	1,747	206	2	149	303	12	2,419
50,000 - 75,000	2004	2,864	40	10	51	174	4	3,143
	2005	2,445	109	2	98	112	2	2,768
75,001 - 100,000	2004	3,019	110	9	58	129	11	3,336
	2005	2,665	105	7	98	107	4	2,986
100,001 - 150,000	2004	3,958	238	33	62	140	8	4,439
	2005	3,697	273	22	94	131	10	4,227
150,001 - 200,000	2004	2,419	309	45	45	129	5	2,952
	2005	2,404	292	44	71	114	3	2,928
200,001 - 250,000	2004	1,441	282	72	33	79	2	1,909
	2005	1,486	362	50	45	88	4	2,035
250,001 - 500,000	2004	2,552	738	251	76	266	9	3,892
	2005	2,330	761	243	107	256	10	3,707
500,001 - 1,000,000	2004	538	274	68	30	188	11	1,109
	2005	621	264	97	42	164	8	1,196
1,000,001 & Above	2004	135	57	74	28	200	8	502
	2005	112	65	62	22	211	2	474
Total	2004	19,205	2,101	568	569	1,762	87	24,292
	2005	18,011	2,481	530	950	1,805	63	23,840

Source: Jabatan Penilaian dan Perkhidmatan Harta

Penang: Value of Transactions by Price Range for the Principal Property Sub-Sectors, 2004 & 2005 (in RM million)

Price Range (RM)	Year	Residential	Commercial	Industrial	Agricultural	Development	Others	Total
0 - 25,000	2004	12.77	0.27	0.00	1.04	3.13	0.22	17.43
	2005	10.94	0.77	0.02	2.90	4.07	0.12	18.82
25,001 - 50,000	2004	70.50	1.27	0.19	3.99	9.20	0.45	85.60
	2005	67.98	8.51	0.08	5.69	11.52	0.41	94.19
50,000 - 75,000	2004	185.15	2.65	0.65	3.22	11.05	0.26	202.98
	2005	159.16	7.01	0.12	6.18	6.98	0.14	179.59
75,001 - 100,000	2004	269.02	9.89	0.83	4.95	11.49	0.93	297.11
	2005	234.86	9.27	0.63	8.76	9.56	0.34	263.42
100,001 - 150,000	2004	501.63	30.66	4.26	7.73	17.54	1.02	562.84
	2005	467.53	35.54	2.92	11.68	16.31	1.31	535.29
150,001 - 200,000	2004	421.40	55.38	8.14	8.16	23.09	0.82	516.99
	2005	417.93	52.45	8.01	12.46	19.90	0.54	511.29
200,001 - 250,000	2004	325.72	64.92	16.81	7.48	17.91	0.45	433.29
	2005	336.51	82.90	11.48	10.19	20.05	0.91	462.04
250,001 - 500,000	2004	866.61	257.02	85.36	28.20	95.16	3.15	1,335.50
	2005	800.78	266.83	84.57	36.03	92.24	3.87	1,284.32
500,001 - 1,000,000	2004	353.82	178.77	46.36	21.11	132.05	7.21	739.32
	2005	415.92	171.71	66.58	27.91	117.75	5.22	805.09
1,000,001 & Above	2004	230.98	94.43	291.77	66.33	767.01	11.59	1,462.11
	2005	190.34	147.20	213.85	39.65	750.75	6.24	1,348.03
Total	2004	3,237.60	695.26	454.37	152.21	1,087.63	26.10	5,653.17
	2005	3,101.95	782.19	388.26	161.45	1,049.13	19.10	5,502.08

Source: Jabatan Penilaian dan Perkhidmatan Harta

EDUCATION

Penang: Number of Schools, Students & Teachers at the Primary Level, Jan 2005

Type of School	No. of Schools	Enrolment		No. of Students	No. of Classes	No. of Teachers	Non-Teaching Staff
		Male	Female				
SK	113	38,595	36,104	74,699	2,300	4,276	579
SRK	29	8,720	8,123	16,843	510	1,019	141
SJK (C)	90	29,543	27,737	57,280	1,682	2,975	461
SJK (T)	28	2,893	3,025	5,918	223	400	108
SK Khas	3	80	69	149	29	54	19
Total	263	79,831	75,058	154,889	4,744	8,724	1,308

Source: Jabatan Pendidikan Negeri, Pulau Pinang

Penang: Number of Schools, Students & Teachers at the Secondary Level, Jan 2005

Type of School	No. of Schools	Enrolment		No. of Students	No. of Classes	No. of Teachers	Non-Teaching Staff
		Male	Female				
SMK	96	51,704	52,749	104,453	3,233	6,294	1,025
SMT	6	1,396	739	2,135	105	442	107
SMKA	4	1,210	1,526	2,736	97	226	58
SM Khas	1	95	73	168	19	44	18
SMBP	1	373	240	613	24	64	34
SM + SR (Special Model)	1	456	466	922	33	74	17
Total	109	55,234	55,793	111,027	3,511	7,144	1,259

Source: Jabatan Pendidikan Negeri, Pulau Pinang

Penang: Number of Students Taking Public Exams and Passing Rates, 2004 - 2005

	No. of Students		No. of Passes		Passing Rate (%)	
	2004	2005	2004	2005	2004	2005
UPSR	23,521	24,125	15,210	16,202	64.7	67.2
PMR	19,600	20,677	12,677	14,394	64.6	69.6
SPM	18,354	20,644	15,968	n.a	87.0	n.a
STPM	3,725	3,899	3,567	n.a	95.8	n.a

Source: Jabatan Pendidikan Negeri, Pulau Pinang

Penang: Number of Private Education Institutions (as of 31 December 2004)

Type of Institution	No. of Institutions	No. of Students	No. of Teachers
Private Primary Schools	2	170	26
Private Secondary Schools	4	380	42
Private Religious Primary Schools	0	0	0
Private Religious Secondary Schools	0	0	0
Chinese Independent Schools	5	2,781	184
International Schools	3	1,209	144
Expatriate Schools	2	293	27
Special Need Schools	3	128	20
Language Centres	8	358	25
Computer Centres	29	1,418	116
Tuition Centres	120	6,100	542
Skills Training Centres	24	154	48
Kindergartens	325	21,106	986*
Total Private Education Institutions	525	34,097	2,160

Note: Including assistant teachers

Source: Jabatan Pendidikan Swasta, Malaysia

HEALTH

Life Expectancy at Birth (Malaysia):

	2002 (Projections)	2003 (Projections)	2004 (Projections)
Male	70.2	70.3	70.4
Female	75.6	75.9	76.2

Source: Department of Statistics, Malaysia

Life Expectancy at Birth (Penang):

	2003
Male	70.4
Female	75.3

Source: Penang State Health Department

Vital Statistics of Penang (per thousand), 1995 - 2006

	1995	1996	1997	1998	1999	2000	2002	2003	2004	2005	June 2006
Crude Birth Rate	24.9	23.6	21.8	20.8	20.9	19.00	18.17	17.76	16.77	16.27	12.7
Crude Death Rate	5.9	6.4	6.2	6.2	6.09	6.00	6.01	5.35	5.66	5.53	3.4
Infant Mortality Rate	7.2	7.5	7.0	6.2	5.55	5.31	6.5	4.8	4.30	3.98	2.39
Prenatal Mortality Rate	9.9	9.5	8.6	8.3	8.97	7.35	9.2	6.6	6.50	8.04	3.64
Neonatal Mortality Rate	5.0	5.3	4.9	4.1	3.98	4.90	4.6	3.8	3.40	3.20	1.62
Toddler Mortality Rate	0.4	0.4	0.3	0.4	0.19	0.15	0.2	0.3	0.10	0.16	0.09
Maternal Mortality Rate	0.3	0.3	0.4	0.5	0.16	0.16	0.6	0.3	0.44	0.41	0.09

Source: Penang State Health Department

Penang: Ratio of Medical Professionals – Population, 1996 - 2005

	1996	1997	1998	1999	2000	2001	2002	2003	2004	2005
Doctor	1:1432	1:1353	1:1244	1:1194	1:1145	1:1031	1:1028	1:1014	1:963	1:840
Dentist	1:1071	1:9258	1:9425	1:8203	1:7871	1:7729	1:8912	1:8335	1:8744	1:7095
Nurse	1:677	1:728	1:689	1:633	1:600	1:577	1:596	1:569	1:531	1:501

Source: Penang State Health Department

Penang: Health Facilities 1999 - 2006

	1999	2000	2002	2003	2004	2005	June 2006
Government Hospital	5	5	5	6	6	6	6
Private Hospital	11	11	11	11	11	11	11
Private Maternity Home	8	8	8	8	8	7	7
Private Medical Centre	6	6	3	6	6	6	6
Mother & Child Health Care	12	12	14	14**	14**	6**	6**
Health Centre	16	16	30*	30*	30*	26*	26*
Rural Clinics	61	61	62	62	62	62	62
Midwives-quarters-cum-clinics	3	3	2	2	2	n.a	n.a

* Inclusive of Polyclinic & Hospitals' Outpatient Department

** Inclusive of MCH Clinic located in Health Clinic Building

n.a Not available

Source: Penang State Health Department

Penang: Number of Hospital Beds (Government & Private) and Ratio of Hospital Beds to Population, June 2006

	Government	Private	Total	Ratio
Total	1,930	1,985	3,915	1:125

Source: Penang State Health Department

Penang: Number of Beds, Bed Occupancy Rate (BOR) & Average Length of Stay (ALOS) for Government Hospitals, June 2006

Hospital	June 2006		
	Beds	BOR	ALOS
Hospital Pulau Pinang	1,090	71.99%	5.19
RHSP (Hospital Seberang Jaya)	314	47.94%	3.22
RHSP (Hospital Bukit Mertajam)	242	47.30%	2.63
Hospital Sungai Bakap	130	60.54%	6.50
Hospital Balik Pulau	71	58.12%	3.95
Hospital Kepala Batas*	108	85.23%	3.07
Total	1,955		

RHSP = Rangkaian Hospital Seberang Perai (A merging hospital which consists of Hospital Seberang Jaya & Hospital Bukit Mertajam, but physically still 2 hospitals)

* Hospital Kepala Batas commenced its services on 1st Jan 2003

Source: Penang State Health Department, series of Penang Health Information and from unpublished sources

Penang: HIV/AIDS (Total Identified Cases), 1999 - 2006

	1999	2000	2001	2002	2003	2004	2005	June 2006
HIV	225	194	215	268	266	308	251	123
AIDS	105(55)	70(52)	69(34)	88(45)	49(20)	59(34)	70(50)	56(27)

Note: () = deaths

Source: Penang State Health Department

Penang: 10 Main Causes of Hospital Deaths (Government), 2005

Ranking	Main Causes of Death	Total Deaths	% of Deaths to Total Hospital Deaths
1	Septicaemia	381	19.58%
2	Malignant Neoplasm	273	14.03%
3	Cerebo-Vascular Diseases	266	13.67%
4	Ischaemic Heart Diseases	223	11.46%
5	Pneumonia	173	8.89%
6	Diseases of Pulmonary Circulation and Other form of hearth diseases	161	8.27%
7	Transport Accident	143	7.35%
8	Diseases of the Digestive System	134	6.89%
9	Renal Failure	130	6.68%
10	Certain Condition Originating in the Perinatal Period	62	3.18%
Total Deaths		1,946	100.00%

Source: Penang State Health Department

SELECTED NATIONAL STATISTICS

Malaysia: Gross Domestic Product by Sector (Current Prices & 1987 Prices)

Component	RM Million				
	Q4/05	Q1/06	Q2/06	Q3/06	Q4/06
National Accounts (GDP) at Current Prices	130,458	129,499	133,815	141,360	140,906
Agriculture, Forestry and Fishing	11,023	11,270	12,183	13,787	12,710
Mining and Quarrying	20,454	21,252	21,060	22,970	20,963
Manufacturing	39,944	39,888	41,189	42,419	43,398
Electricity, Gas and Water	3,583	3,666	3,947	4,054	3,953
Construction	3,881	3,523	3,895	3,880	3,903
Wholesale and Retail Trade, Hotel and Restaurants	17,520	16,882	17,040	18,292	18,675
Transport, storage and Communication	8,289	8,274	8,459	8,770	8,892
Finance, Insurance, real estate and business services	13,860	13,782	14,780	15,192	15,556
Other Services	7,638	7,598	7,772	7,952	8,082
Government Services	9,135	8,454	9,003	9,581	10,146
Less : Imputed bank service charges	6,232	6,529	6,925	7,006	6,727
Plus : import duties	1,365	1,438	1,414	1,471	1,355
National Accounts (GDP) at 1987 Prices	68,072	66,348	68,212	70,743	71,921
Agriculture, Forestry and Fishing	5,410	5,335	5,762	6,163	5,760
Mining and Quarrying	4,475	4,444	4,091	4,400	4,562
Manufacturing	21,681	21,440	22,099	22,397	22,604
Electricity, Gas and Water	2,686	2,734	2,861	2,940	2,866
Construction	1,809	1,646	1,820	1,811	1,820
Wholesale and Retail Trade, Hotel and Restaurants	10,201	9,766	9,810	10,422	10,729
Transport, storage and Communication	5,932	5,930	6,019	6,217	6,336
Finance, Insurance, real estate and business services	10,417	10,141	10,751	10,960	11,283
Other Services	5,194	5,182	5,268	5,366	5,438
Government Services	5,158	4,773	5,083	5,394	5,713
Less : Imputed bank service charges	5,936	6,147	6,423	6,431	6,213
Plus : import duties	1,044	1,105	1,071	1,104	1,026

Source: Bank Negara Malaysia

Note: Data is subject to adjustments and revisions by Bank Negara Malaysia

Malaysia: Exchange Rates

Period	USD	GBP	EUR	AUD	JPY100	SGD
Q1/2005	3.8000	7.1918	4.9909	2.9544	3.6376	2.3240
Q2/2005	3.8000	7.0510	4.7833	2.9199	3.5334	2.2905
Q3/2005	3.7715	6.7339	4.6022	2.8661	3.3911	2.2516
Q4/2005	3.7766	6.6003	4.4892	2.8093	3.2212	2.2377
Q1/2006	3.7256	6.5265	4.4817	2.7505	3.1888	2.2891
Q2/2006	3.6479	6.6691	4.5870	2.7223	3.1899	2.2952
Q3/2006	3.6720	6.8839	4.6809	2.7804	3.1612	2.3252

Source: Bank Negara Malaysia

Malaysia: National Indices & Employment Data

Unit Description	Latest Period	Latest Data	Previous Period	
Industrial Production Index	2000=100	Dec-06	137.6	138.4
Employment	(million persons)	Q3/2006	10.422	10.327
Employment	% of labour force	Q3/2006	96.9	96.6
Unemployment	(million persons)	Q/2006	0.336	0.359
Unemployment	% of labour force	Q3/2006	3.1	3.4
Average salaries and wages per employee in manufacturing sector	RM per month	Dec-06	1,934.5	1,737.5
Consumer Price Index	2005=100	Dec-06	104.6	104.1
Producer Price Index	1989=100	Dec-06	128.7	129.7

Source: Bank Negara Malaysia

Malaysia: Federal Government Accounts

Component	RM Million	
	2004	2005
Public Sector Operations		
General Government		
Revenue	95,034	94,961
Operating Expenditure	101,026	106,633
NPFE's Operating Surplus	81,252	84,973
Public Sector Current Account	75,260	73,301
Net Development Expenditure	56,716	64,451
Public Sector Overall Balance	18,544	8,850
Domestic Financing	-16,578	2,376
Bank	-40,045	-8,226
Non-Bank	23,467	10,602
Foreign Borrowing	-1,966	-11,226

Source: Bank Negara Malaysia

Malaysia: Producer Price Index

1989 = 100

Section	Weights	2005	January - February Average		
			2005	2006	% Change
Food & Live Animals Chiefly for Food	14.88	141.1	140.0	141.8	1.3
Beverages and Tobacco	2.08	170.6	169.9	172.0	1.2
Crude Materials, Inedible Except Fuels	17.96	137.0	132.4	146.6	10.7
Mineral Fuel / Lubricants & Related Materials	18.82	274.4	230.8	311.1	34.8
Animal & Vegetable Oils & Fats	8.47	172.7	167.1	173.3	3.7
Chemicals & Related Products N.E.S.	4.42	127.3	127.0	125.1	-1.5
Manufactured Goods Classified Chiefly by Material	10.82	128.6	128.1	128.7	0.5
Machinery & Transport Equipment	18.35	110.9	110.5	110.6	0.1
Miscellaneous Manufactured Articles	3.61	131.8	130.6	132.6	1.5
Commodities & Transactions N.E.C. in the S.I.T.C.	0.59	130.1	130.1	130.6	0.4
Total	100.00	160.8	150.9	169.5	12.3

Source: The Malaysian Economy in Brief, March 2006, Department of Statistics, Malaysia

Malaysia: Consumer Price Index

2005=100

Period	All groups	Food & non-alcoholic beverages	Alcoholic beverages & tobacco	Clothing & footwear	Housing, water, electricity, gas & other fuels	Furnishings, household equipment & routine	Health	Transport	Communication	Recreation services and culture	Education	Restaurant & hotels	Miscellaneous goods and services
2003	93.4	99.3	100.8	96.9	95.0	97.4	93.4	99.3	100.8	96.9	95.0	97.4	93.4
2004	94.1	100.0	99.9	98.2	96.6	98.7	94.1	100.0	99.9	98.2	96.6	98.7	94.1
2005	100.0	100.0	100.0	100.0	100.0	100.0	100.0	100.0	100.0	100.0	100.0	100.0	100.0
2006													
Jan	101.8	102.8	105.1	98.8	100.5	100.7	101.4	103.6	99.5	100.4	100.8	102.3	101.3
Feb	101.9	102.6	105.2	99.8	100.7	100.8	101.6	103.6	99.4	100.8	101.1	102.5	101.7
Mar	103.4	102.3	105.2	98.6	101.2	100.8	101.6	113.2	99.2	100.7	101.2	102.9	101.5
Apr	103.4	102.3	105.2	99.6	101.2	101.0	101.7	112.2	98.9	100.7	101.3	103.2	102.0
May	103.6	102.9	105.3	99.4	101.4	101.0	101.9	112.2	98.7	100.7	101.3	103.5	103.2
June	103.8	103.3	105.3	98.8	101.7	101.1	102.0	112.3	98.5	100.7	101.6	103.8	102.6
July	104.0	103.7	105.4	99.3	101.7	101.2	102.3	112.3	98.4	100.9	101.7	104.0	102.5
Aug	103.9	103.5	105.4	97.9	101.9	101.1	102.4	112.4	98.3	100.8	101.9	104.2	102.6
Sept	104.1	103.6	110.3	98.9	101.9	101.3	102.6	112.5	98.2	100.8	102.0	104.3	102.6
Oct	104.1	103.9	110.3	97.4	101.9	101.4	102.6	112.5	98.1	100.8	102.0	104.3	102.0
Nov	104.4	104.5	110.3	98.5	102.1	101.5	102.8	112.5	98.0	100.8	102.1	104.5	102.4
Dec	104.6	105.0	111.4	97.2	102.2	101.5	102.9	112.5	97.9	100.7	102.5	104.7	102.5

Note: Data from 2003 – 2006 refers to Consumer Price Index (2005=100) for Malaysia.

Source: Department of Statistics, Malaysia

Malaysia: Index of Industrial Production

2000=100

Period	All Divisions	Mining	Electricity	Manufacturing	Export-Oriented Industries	Domestic-oriented Industries
Weight	100.0	23.37	5.96	70.67	0.80	0.20
2000	100.0	100.0	100.0	100.0	100.0	100.0
2001	96.7	103.1	108.7	93.5	91.3	102.5
2002	101.2	104.9	119.9	98.4	95.7	109.0
2003	110.5	110.5	126.8	109.1	107.9	114.0
2004	122.5	117.0	137.2	123.0	123.8	119.9
2005	127.5	117.6	145.1	129.3	130.8	123.2
2006						
Jan	130.2	120.5	142.7	132.4	135.1	121.8
Feb	123.8	108.7	138.9	127.5	130.1	117.2
Mar	138.9	121.6	158.2	142.9	146.0	130.7
Apr	130.3	110.7	152.3	135.0	137.3	125.8
May	133.1	103.9	155.0	140.9	142.1	136.2
June	135.4	108.8	152.2	142.7	144.1	137.4
July	136.8	114.4	158.8	142.3	143.2	138.6
Aug	138.2	114.4	159.0	144.3	145.1	141.3
Sept	136.0	111.3	154.3	142.6	142.9	141.4
Oct	132.3	120.3	149.0	134.8	136.3	129.0
Nov	136.6	115.7	154.3	142.0	143.3	136.6
Dec	137.5	121.2	155.3	141.3	143.4	133.1

Period	Export-Oriented Industries										
	Total	Electronic & Electrical	Of Which		Chemicals & Chemical Products	Petroleum Products	Textiles & Wearing Apparel	Wood & Wood Products	Rubber Products	Off-Estate Processing	Others
			Electronics	Electricals							
2006											
Jan	135.1	133.2	155.0	90.6	154.7	162.0	86.7	112.5	123.3	101.6	96.3
Feb	130.1	132.9	148.8	101.9	137.3	149.3	80.6	99.4	127.7	112.7	94.5
Mar	146.0	150.4	172.4	107.4	144.7	171.0	86.3	114.8	143.6	133.0	121.1
Apr	137.3	137.2	157.2	98.1	148.6	150.5	85.8	109.7	147.5	138.1	118.9
May	142.1	137.6	155.8	102.0	163.8	154.4	105.9	117.8	144.2	145.0	126.8
Jun	144.1	145.4	167.8	101.6	160.2	154.6	90.1	112.1	140.5	138.2	129.6
July	143.2	141.7	166.4	93.4	160.4	157.6	89.4	113.3	148.5	145.0	129.1
Aug	145.6	142.1	166.1	95.4	165.0	159.6	92.4	119.4	150.2	158.4	129.4
Sept	142.9	143.6	165.1	101.8	148.8	153.1	88.7	119.4	149.9	164.3	132.1
Oct	136.3	127.6	146.7	90.4	155.7	170.3	79.5	116.2	142.6	144.0	120.9
Nov	143.3	139.4	158.8	101.7	154.0	167.4	97.2	116.1	151.0	157.8	120.3
Dec	143.4	141.4	163.6	98.0	153.3	176.6	86.2	121.2	147.5	121.6	109.9
Period	Domestic-Oriented Industries										
	Total	Non-metallic Mineral Products	Iron and steel	Food Manufacturing	Transport Equipment	Fabricated Metal Products	Paper Products	Beverages	Tobacco Products		
2006											
Jan	121.8	109.0	96.3	119.4	162.6	121.9	119.0	155.2	81.0		
Feb	117.2	100.3	92.7	119.1	146.4	131.3	120.9	120.8	74.3		
Mar	130.7	115.6	106.1	132.8	161.6	156.0	120.5	86.0	98.7		
Apr	125.8	113.7	102.1	129.9	154.7	148.5	111.6	88.5	80.1		
May	136.2	120.0	109.1	136.0	156.2	172.1	144.1	83.7	81.9		
Jun	137.4	118.9	114.6	144.6	156.0	159.6	146.1	109.5	95.7		
July	138.6	123.0	112.2	147.9	149.7	162.1	145.8	130.4	96.2		
Aug	140.6	121.1	111.5	159.9	147.9	166.6	145.4	126.8	95.9		
Sept	141.4	125.3	112.9	153.3	154.4	169.4	144.8	116.5	78.5		
Oct	129.0	117.6	109.5	134.5	130.8	160.4	139.0	96.9	58.0		
Nov	136.6	120.0	130.0	140.5	137.5	165.4	142.9	126.4	79.7		
Dec	133.1	117.8	125.1	140.2	128.6	166.8	134.6	117.7	77.2		

Source: Department of Statistics, Malaysia

Note: Under the new Industrial Production Index (2000=100), LNG processing has been reclassified as petroleum products (previously classified as chemicals and chemical products). Petroleum products have now been categorized under export-oriented industries (previously: domestic-oriented industries).