

# Penang Statistics

September 2004



Submitted to the Penang State Government  
by

Socio-Economic & Environmental Research Institute

10 Brown Road, 10350 Penang

Tel: (04) 228 3306 Fax: 226 7042

E-mail: [seripg@tm.net.my](mailto:seripg@tm.net.my)

Website: <http://www.seri.com.my>

## CONTENTS

<b>PHYSICAL ATTRIBUTES</b>	
Area, Location & Climate	3
<b>DEMOGRAPHY</b>	
Penang: Estimated Population (in '000) and Distribution by Districts	3
Penang: Estimated Population by Sex (in '000)	3
Penang: Estimated Population by Ethnic Group (in '000)	4
<b>ECONOMIC</b>	
Penang: Gross Domestic Product (in 1987 - Constant Prices)	5
Penang: Sectoral Share of Gross Regional Product (%)	5
Penang: Gross Regional Product Growth Rates (%)	5
Penang: Gross Domestic Product Per Capita (In Current Prices) and Ratio of State to National Per Capita GDP	5
Penang: Gross Regional Product by Economic Sectors for Quarter 2 2003 & Quarter 2 2004	6
Penang: Relative Growth Rate by Economic Sectors for period Q2 2003 - Q2 2004	6
<b>EMPLOYMENT</b>	
Penang: Employed Persons by Industry, 2001 - 2003 ('000 persons)	6
Penang: Percentage Distribution of Employed Persons by Economic Sectors and Gender, 2002 - 2003	7
Penang: Labour Force Participation Rate by Gender and Ethnic Group (%), 2002 - 2003	7
<b>PRIMARY SECTOR</b>	
<b>AGRICULTURE</b>	
Penang: Agriculture Areas (In Hectares), 1997 - 2002	8
<b>LIVESTOCK</b>	
Penang: Livestock Survey, 2001 - 2003	8
Penang: Production and Value of Livestock, 2002 - 2003	9
<b>FISHERIES</b>	
Penang: Landings of Marine Fish, 1990 - 2004	9
Penang: Aquaculture Production and Value, 1991 - 2004	10
<b>SECONDARY SECTOR</b>	
<b>MANUFACTURING</b>	
Penang: Approved Manufacturing Projects, Employment & Capital Investment, 1990 - 2004	10
Penang: Approved Manufacturing Projects By Industry, 2001 - 2004	11
Approved Manufacturing Projects And Investment By State, 2001 - 2004	11
Penang: Manufacturing Industry - Principal Statistics	12
<b>TERTIARY SECTOR</b>	
<b>UTILITIES</b>	
<b>WATER</b>	
Penang: Water Output And Consumption ('000) cubic metres), 1991 - 2004	14
Penang: Daily Water Supply And Consumption, Jan - June 2004	15
<b>ELECTRICITY</b>	
Penang: Electricity Supplied and Consumed, 1999/2000 - 2003/2004	15
<b>TELECOMMUNICATIONS</b>	
Direct Exchange Line (DEL) Penetration Rate by State, 2003 & 2004	16
Internet Dial-Up Penetration Rate by State, 2003 & 2004	17
<b>TRANSPORT</b>	
<b>ROAD TRANSPORT</b>	
New Motor Vehicle Registration, 2004	18
Motor Vehicle Re-registration, 2004	18

**TRADE****TRADE BALANCE**

Export, Import & Trade Balance, 2003-2004 (RM million) 19

**AIRPORT**

Aircraft Movement per annum, 1991 - 2004 20

Number of Passengers (Domestic & International) per annum, 1991 - 2004 20

Cargo Handled (Domestic & International) per annum, 1991 - 2004 21

**PORT**

Annual Number of Shipcalls, 1990 - 2004 22

Gross Registered Tonnage (Domestic & Foreign), 1990 - 2004 22

Type of Cargo Handled, 1990 - 2004 23

**TOURISM**

Penang: Average Occupancy Rate, Number of Registered Guests and Estimated Total Visitor Arrivals, 2000 - 2003 24

**PROPERTY**

Penang: House Price Index, 1988 - 2003 24

Penang: Number of Property Transactions by Sector, 2002 & 2003 25

Penang: Value of Property Transactions by Sector, 2002 & 2003 (RM Million) 25

Penang: Average Value of Property by Sector, 2002 & 2003 (RM) 25

**EDUCATION**

Penang: Number of Schools, Students & Teachers At The Primary Level, 2001 - 2003 26

Penang: Number of Schools, Students & Teachers At The Secondary Level, 2001 - 2003 26

Penang: Number of Students Taking Public Exams and Passing Rates, 2002 - 2003 26

Penang: Number of Dropouts, 2001 - 2003 26

Penang: Number of Private Education Institutions (as of September 2003) 26

Penang: Number of Private Higher Education Institutions (as of September 2003) 27

Penang: USM - Students Enrolment by Study Programme 27

**HEALTH**

Life Expectancy at Birth (Malaysia) 28

Life Expectancy at Birth (Penang) 28

Vital Statistics of Penang (per thousand), 1994 - 2004 (Jan-June) 28

Penang: Ratio of Medical Professionals -Population, 1994 - 2003 28

Penang: Health Facilities, 1998 - 2004 28

Penang: Number Of Hospital Beds (Government & Private) and Ratio of Hospital Beds to Population, 2004 (Jan - June) 29

Penang: Number of Beds, Bed Occupancy Rate (BOR) & Average Length of Stay (ALOS) for Government Hospitals, 2004 29

Penang: HIV / AIDS (Total Identified Cases), 1999 - 2004 29

Penang: 10 Main Causes of Hospital Deaths (Government), 2003 29

**SELECTED NATIONAL STATISTICS**

Malaysia: Gross Domestic Product by Sector (Current Prices & 1987 Prices) 30

Malaysia: Currency Exchange Rates 30

Malaysia: National Indices & Employment Data 31

Malaysia: Federal Government Accounts 31

Malaysia: Producer Price Index 31

Malaysia: Consumer Price Index 32

Malaysia: Index of Industrial Production 33

*Disclaimer :*

*All data are correct at the time of publication and are subject to adjustments and revision by the respective sources. The Socio-economic & Environmental Research Institute (SERI) will not be responsible for any loss or damage caused by the usage of any information obtained from this publication.*

## PHYSICAL ATTRIBUTES

### Area:

<b>State of Penang</b>	<b>1031 sq km</b>
Penang Island	293 sq km
Seberang Perai	738 sq km

### Location:

Latitudes	5°8' - 5°35'
Longitudes	100°8' - 100°32'

### Climate:

<b>Tropical Monsoon</b>	
Temperature (Day)	27°C - 30°C
Temperature (Night)	22°C - 24°C
Mean Annual Rainfall	267 cm
Relative Humidity	70% - 90%

## DEMOGRAPHY

### Penang: Estimated Population (in '000) and Distribution by Districts

District	1991	2000	2002	2003	2004
	(census)	(census)	(estimate)	(estimate)	(forecast)
Timur Laut	395.7	444.9	466.0	469.4	476.2
Barat Daya	122.8	169.4	181.9	187.2	191.3
Seberang Perai Utara	224.6	259.8	266.1	278.8	283.4
Seberang Perai Tengah	236.3	313.6	337.4	341.8	348.8
Seberang Perai Selatan	84.8	125.7	138.9	139.7	143.1
<b>State of Penang</b>	<b>1,064.2</b>	<b>1,313.4</b>	<b>1,390.3</b>	<b>1,416.9</b>	<b>1,442.8</b>

Source: State Population Report, Penang, 1991, Department of Statistics (DOS), Malaysia; Population and Housing Census of Malaysia 2000: Population Distribution and Basic Demographic Characteristics, DOS, Malaysia; DOS, Penang.

Note: Slight discrepancies may occur due to rounding.

### Penang: Estimated Population by Sex (in '000)

Gender	1991	2000	2003	2004
	(census)	(census)	(estimate)	(forecast)
Male	526.0	654.1	703.2	715.2
Female	538.1	659.4	713.7	727.6
<b>Total</b>	<b>1,064.2</b>	<b>1,313.4</b>	<b>1,416.9</b>	<b>1,442.8</b>

Source: State Population Report, Penang, 1991, DOS, Malaysia; Population and Housing Census of Malaysia 2000: Population Distribution and Basic Demographic Characteristics, DOS, Malaysia; DOS, Malaysia; DOS, Penang.

Note: Slight discrepancies may occur due to rounding.

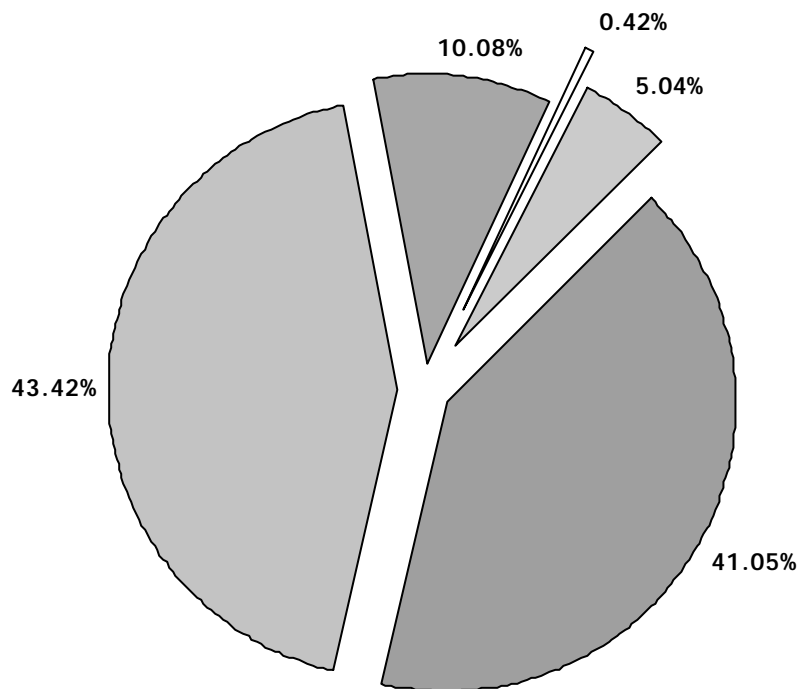
**Penang: Estimated Population by Ethnic Group (in '000)**

<b>Ethnic Group</b>	<b>1991</b>	<b>2000</b>	<b>2003</b>	<b>2004</b>
	(census)	(census)	(estimate)	(forecast)
Malaysian:	526.0	1,265.1	1,349.8	1,370.1
Malays	405.4	533.1	574.5	587.3
Other Bumiputera	1.1	3.9	4.7	5.0
Chinese	523.2	588.7	621.0	626.4
Indians	112.8	133.9	143.8	145.4
Others	5.8	5.4	5.8	6.0
Non-Malaysian Citizens	15.9	48.4	67.2	72.7
<b>Total</b>	<b>1,064.2</b>	<b>1,313.4</b>	<b>1,416.9</b>	<b>1,442.8</b>

Source: State Population Report, Penang, 1991, DOS, Malaysia; Population and Housing Census of Malaysia 2000: Population Distribution and Basic Demographic Characteristics, DOS, Malaysia; DOS, Penang.

Note: Slight discrepancies may occur due to rounding.

**Population By Ethnic Group, 2004**



■ Bumiputera ■ Chinese ■ Indian □ Others ■ Non-Malaysian

Source: Department Of Statistics, Penang

## ECONOMIC

### Penang: Gross Regional Product (In 1987 - Constant Prices)

(RM Million)	1995	2000	2001	2002	2003 (e)	2004(f)
Agri, forestry, fishing	216.3	227.7	267.7	277.36	286.65	287.51
M&Q	162.6	191.1	202.4	196.00	186.98	180.06
Manufacturing	5935.0	7860.0	6,926.3	7,235.90	7,532.57	7,942.34
Construction	439.0	418.2	405.1	369.26	381.45	384.31
Tertiary	6761.4	8510.8	8,971.8	9,423.34	9,847.39	10,389.00
Total	13,515.1	17,207.8	16,773.3	17,501.86	18,235.04	19,183.22
Growth Rate		4.95%	-2.5%	4.3%	4.2%	5.2%

Source: Penang Strategic Development Plan 2 (PSDP2) & SERI

Note: Slight discrepancies may occur due to rounding. Projection for 2004 is based on Q4 2003 data and is subject to adjustments and revision by SERI.

### Penang: Sectoral Share of Gross Regional Product (%)

	1995	2000	2001	2002	2003(e)	2004(f)
Agri, forestry, fishing	1.6	1.3	1.6	1.6	1.6	1.5
M&Q	1.2	1.1	1.2	1.1	1.0	0.9
Manufacturing	43.9	45.7	41.3	41.3	41.3	41.4
Construction	3.3	2.4	2.4	2.1	2.1	2.0
Tertiary	50.0	49.5	53.5	53.8	54.0	54.2
Total	100.0	100.0	100.0	100.00	100.00	100.00

Source: PSDP2 & SERI

### Penang: Gross Regional Product Growth Rates

	1991-1995	1996-2000	2001-2005	2006-2010(f)
Agri, forestry, fishing	-1.10	1.00	2.00	2.30
M&Q	47.40	5.06	2.50	4.10
Manufacturing	11.86	6.46	8.10	8.90
Construction	12.02	-0.14	2.74	4.64
Services	11.15	4.78	6.60	6.70
Total	11.39	5.26	7.20	7.60
GDP at Market Prices	11.41	4.97	6.90	7.30
GDP per capita	9.80	3.90	5.90	6.20

Source: PSDP2

### Penang: Gross Regional Product Per Capita (In Current Prices) and Ratio of State to National Per Capita GDP

(RM)	1990	1995	2000	2001	2002	2003
GRP per capita, Penang	5,246*	13,858	20,327	18,760	20,037	22,294**
Ratio of State to national per capita GDP	1.19	1.35	1.39	1.35	1.36	1.42

Source: Economic Planning Unit & SERI

\* In 1978 prices

\*\* Using Bank Negara Malaysia's ratios of GDP to GNP for national figures (average of 2001 to 2003)

**Penang: Gross Regional Product by Economic Sectors for Quarter 2  
2003 & Quarter 2 2004**

Sectors	Penang Sect Share (%)		Volume (RM Million in 1987 Prices)	
	Q203	Q204	Q203	Q204
Agriculture, Forestry & Fishing	1.6%	1.5%	72	74.9
Mining & Quarrying	1.0%	0.9%	47	44.2
Manufacturing	41.3%	42.4%	1,871	2,061.0
Construction	2.1%	1.8%	95	87.5
Services	54.0%	53.4%	2,446	2,593.3
<b>Sum</b>	<b>100.0%</b>	<b>100.0%</b>	<b>4,531</b>	<b>4,860.8</b>

Source: SERI

**Penang: Relative Growth Rate by Economic Sectors for period Q2 2003  
- Q2 2004**

Sector	Relative Growth Rate
Agriculture, Forestry & Fishing	4.0%
Mining & Quarrying	-5.9%
Manufacturing	10.2%
Construction	-7.9%
Services	6.0%
<b>Total</b>	<b>7.28%</b>

Source: SERI

## EMPLOYMENT

**Penang: Employed Persons by Industry, 2001 - 2003 ('000 persons)**

Industry	2001	2002	2003
Agriculture, hunting and forestry	10.8	11.8	8.3
Fishing	5.3	3.7	5.3
Mining and quarrying	1.3	0.2	0.8
Manufacturing	291.6	259.7	250.5
Electricity, gas and water supply	3.8	2.6	3.7
Construction	45.5	44.8	44.3
Wholesale and retail trade; repair of motor vehicles, motorcycles and personal and household goods	111.3	102.8	110.7
Hotels and restaurants	52.9	43.5	57.9
Transport, storage and communication	33.4	33.9	35.5
Financial intermediation	16.8	16.5	15.2
Real estate, renting and business activities	31.4	27.6	30.5
Public administration and defense; compulsory social security	30.2	25.4	28.0
Education	29.8	26.9	31.9
Health and social work	19.8	17.0	17.7
Other community, social and personal service	14.3	12.0	14.3
Private households with employed persons	16.9	14.7	19.8
Extra-territorial organisations and bodies	0	0	0
<b>Total</b>	<b>714.9</b>	<b>643.1</b>	<b>674.4</b>

Source: Labour Force Survey, DOS, Malaysia

Note: Slight discrepancies may occur due to rounding.

**Penang: Percentage Distribution of Employed Persons by Economic Sectors and Gender, 2002 - 2003**

Industry	2002		2003	
	Male	Female	Male	Female
Agriculture, hunting and forestry	2.7	0.5	1.8	0.4
Fishing	0.9	0.1	1.3	0.0
Mining and quarrying	0.1	0	0.1	0.1
Manufacturing	37.9	44.2	33.8	42.3
Electricity, gas and water supply	0.6	0.1	0.8	0.2
Construction	10.7	1.2	10.3	0.9
Wholesale and retail trade; repair of motor vehicles, motorcycles and personal and household goods	17.6	13.5	18.5	13.3
Hotels and restaurants	6.5	7.2	8.8	8.3
Transport, storage and communication	7.6	1.7	7.3	2.1
Financial intermediation	1.9	3.5	1.9	2.8
Real estate, renting and business activities	4.1	4.6	4.1	5.2
Public administration and defense; compulsory social security	4.8	2.6	5.3	2.5
Education	2.2	7.3	2.8	7.8
Health and social work	0.9	5.3	1.3	4.7
Other community, social and personal service	1.6	2.4	2.1	2.2
Private households with employed persons	0.0	5.8	0.1	7.3
Extra-territorial organizations and bodies	0	0	0	0
<b>Total (%)</b>	<b>100.0</b>	<b>100.0</b>	<b>100.0</b>	<b>100.0</b>
<b>Total ('000 persons)</b>	<b>389.2</b>	<b>253.9</b>	<b>407.5</b>	<b>266.8</b>

Source: Labour Force Survey, DOS, Malaysia

Note: Slight discrepancies may occur due to rounding.

**Penang: Labour Force Participation Rate by Gender and Ethnic Group (%), 2002 - 2003**

	2002			2003		
	Male	Female	Total	Male	Female	Total
Bumiputera	83.6	54.4	68.2	80.1	51.6	65.5
Chinese	83.1	50.3	66.8	80.9	50.7	65.8
Indian	80.9	48.7	65.4	84.7	46.6	66.6
Others	96.6	85.0	91.1	97.3	85.4	90.0
Total	83.8	53.4	68.4	81.6	52.2	66.7

Source: Labour Force Survey, DOS, Malaysia

Note: Slight discrepancies may occur due to rounding.



## PRIMARY SECTOR

### AGRICULTURE

#### Penang: Agriculture Areas (hectares), 1997-2002

Type	Year					
	1997	1998	1999	2000	2001	2002
Rubber	13,487	13,487	13,097	13,013	12,758	12,758
Oil Palm	15,158	15,158	13,182	13,018	12,988	12,988
Padi	14,351	14,351	28,125	28,125	13,448	13,448
Coconut	2,479	2,479	2,481	2,364	2,339	2,309
Cocoa	143	143	141	104	104	75
Vegetables	1,216	1,778	1,711	1,566	1,718	1,545
Fruits	7,096	6,929	7397	7,283	6,830	6,760
Cloves	224	69	87	67	52	41
Nutmeg	168	86	81	82	75	70
Cash Crops	234	474	416	197	247	190
Others	n.a.	n.a.	n.a.	438	87	55
Total	54,556	54,954	66,718	66,257	50,646	50,240

Source: Derived from data from the Jabatan Pertanian Negeri Pulau Pinang

Note: Slight discrepancies may occur due to rounding.

### LIVESTOCK

#### Penang: Livestock Survey, 2001-2003

Type of livestock	2001		2002		2003	
	No. of Livestock Farmers	No. of Livestock	No. of Livestock Farmers	No. of Livestock	No. of Livestock Farmers	No. of Livestock
Buffalo	40	306	33	282	34	300
Cow	866	9,650	893	9,888	896	10,886
Goat	190	4,246	165	3,891	142	3,763
Lamb	69	1,134	27	653	29	695
Pig	296	307,496	273	298,674	246	297,923
Chicken	421	9,342,062	368	9,601,730	454	14,177,026
Duck	45	189,230	42	266,335	49	456,100
Quail	25	110,500	15	80,000	2	9,600

Source: Livestock Survey 2001, 2002 & 2003 Department of Veterinary Services, Penang

## Penang: Production and Value of Livestock, 2002 - 2003

Commodity	2002			2003		
	Production (Metric Tonnes)	Value (RM Million)	%	Production (Metric Tonnes)	Value (RM Million)	%
<b>Meat</b>						
Cow	977.65	11.63	2.79	989.84	11.78	2.15
Buffalo	33.09	0.39	0.09	17.20	0.20	0.04
Goat / Lamb	28.17	0.34	0.08	29.06	0.35	0.06
Pig	20,343.60	110.87	26.58	19,889.59	108.40	19.78
Chicken	50,201.00	230.92	55.35	73,857.00	339.74	61.99
Duck	492.66	2.39	0.57	3,182.11	15.43	2.82
Quail	72.96	0.63	0.15	2.91	0.03	0.01
Rabbit	0.30	0.00	0.00	0.79	0.01	0.00
<b>Eggs</b>	<i>(No. of eggs)</i>			<i>(No. of eggs)</i>		
Chicken	280,846,890	53.36	12.79	350,330,280	70.07	12.78
Duck	28,024,000	6.17	1.48	6,440,000	1.61	0.29
Quail	1,600,000	0.14	0.03	1,356,000	0.12	0.02
<b>Milk</b>	<i>(Liter)</i>			<i>(Liter)</i>		
Fresh milk	455,440	0.34	0.08	455,440.00	0.34	0.06
	<b>Total</b>	417.20	100.00	<b>Total</b>	548.08	100.00

Source: Livestock Survey 2002 & 2003, Department of Veterinary Services, Penang

## FISHERIES

## Penang: Landings of Marine Fish, 1990-2004

Year	Quantity ( <sup>'000</sup> tonnes)	Value (RM million)
1990	52.36	90.54
1991	28.42	91.44
1992	33.77	119.97
1993	33.77	111.43
1994	40.80	130.71
1995	46.18	151.24
1996	37.61	154.88
1997	37.53	158.79
1998	35.47	189.18
1999	34.79	137.84
2000	35.90	148.27
2001	35.07	145.27
2002	31.99	129.89
2003	N/A	N/A
2004 (Jan - Jul)*	19.14	70.46

\* Preliminary Figures

Source: Department of Fisheries, Penang

## Penang: Aquaculture Production and Value, 1991 - 2004

Year	Freshwater Pond Aquaculture		Brackishwater Cage Culture		Cockle Culture		Brackishwater Pond Culture	
	MT	RM Mil	MT	RM Mil	MT ('000)	RM Mil	MT	RM Mil
1991	49.29	0.15	762.46	10.56	8.29	3.22	78.76	0.80
1992	45.06	0.13	862.48	10.39	7.59	2.95	401.8	10.39
1993	54.03	0.16	1,642.93	19.47	14.62	6.47	555.86	6.12
1994	50.44	0.19	1,173.36	16.03	14.59	7.26	567.32	5.92
1995	31.1	0.12	1,105.10	15.29	15.30	7.61	606.37	10.91
1996	76.3	0.25	1,090.69	13.43	16.43	8.13	835.65	13.98
1997	108.01	0.38	1,145.67	14.61	13.11	9.59	643.05	11.96
1998	106.96	0.41	1,836.16	17.7	13.17	9.14	957.12	15.08
1999	110.68	0.33	1,247.42	14.45	13.99	9.73	498.76	8.82
2000	236.49	0.67	1,313.56	19.14	13.12	9.18	407.96	7.57
2001	191.39	0.60	2,093.25	28.84	11.6	8.12	778.02	12.74
2002	270.42	0.81	2,308.53	33.04	9.05	6.33	780.19	14.82
2003*	348.99	1.04	2,617.44	41.92	9.42	6.60	859.01	17.33
2004* (Jan- May)	188.49	0.55	871.36	15.94	3.23	3.16	438.90	7.89

MT= Metric Tonnes

\* Preliminary Figures

Source: Department of Fisheries, Penang

## SECONDARY SECTOR

### MANUFACTURING

## Penang: Approved Manufacturing Projects, Employment &amp; Capital Investment, 1990-2004

Year	Approved Projects			Potential Employment	Capital Investment (RM Million)
	Malaysia	Penang	% of national		
1990	906	132	14.6	24,952	1,867.26
1991	973	125	12.8	22,455	1,525.13
1992	874	119	13.6	14,295	1,096.05
1993	686	87	12.7	10,378	516.82
1994	870	95	10.9	15,203	934.49
1995	898	89	9.9	13,779	1,606.65
1996	782	97	12.4	11,993	3,185.40
1997	759	90	11.9	9,736	1,449.10
1998	844	104	12.3	10,911	2,666.52
1999	725	95	13.1	14,928	4,777.80
2000	798	131	16.5	15,057	4,459.60
2001	928	124	13.4	14,630	3,837.30
2002	792	111	14.0	13,523	2,418.10
2003	965	137	14.2	9,890	1,922.99
2004 (Jan - June)	536	71	13.2	4,890	788.47

Source: MIDA Penang

Note: Slight discrepancies may occur due to rounding. Data is subject to adjustments and revisions by MIDA.

## Penang: Approved Manufacturing Projects by Industry, 2001-2004

Industry	No. of Projects				Investment (RM million)			
	2001	2002	2003	2004 (Jan - June)	2001	2002	2003	2004 (Jan - June)
Electrical & Electronic	60	45	57	33	3,223.4	1,688.5	1,385.4	540.6
Basic Metal Products	4	6	3	3	53.1	90.0	52.0	19.7
Chemicals & Chemical Products	1	6	1	-	4.2	257.7	4.1	-
Fabricated Metal Products	6	10	26	9	30.1	122.9	148.4	80.2
Food Manufacturing	3	4	4	2	33.7	33.6	42.6	11.7
Machinery Manufacturing	10	13	16	8	78.8	46.0	93.6	48.8
Non-Metallic Mineral Products	2	-	-	1	4.5	-	-	6.2
Others	4	2	-	-	63.0	1.4	-	-
Paper, Printing & Publishing	3	5	3	2	81.0	17.9	33.9	21.4
Petroleum & Petrochemical Products	1	-	-	-	69.0	-	-	-
Plastic Products	5	6	10	6	23.6	37.3	25.9	31.4
Rubber Products	5	2	3	-	28.1	9.5	9.8	-
Scientific & Measurement Equipment	2	3	7	3	0.0	37.5	96.8	20.5
Textile & Garment	-	1	2	-	-	8.3	9.1	-
Transport Equipment	4	4	3	3	76.8	16.9	7.7	1.0
Wood & Wood Products	-	1	-	1	-	5.8	-	7.1
Beverages & Tobacco	-	-	1	-	-	-	12.7	-
Furniture & Fixtures	n.a	3	1	-	n.a	45.0	1.0	-
<b>TOTAL</b>	<b>110</b>	<b>111</b>	<b>137</b>	<b>71</b>	<b>3,769.3</b>	<b>2,418.1</b>	<b>1,923.0</b>	<b>788.5</b>

Source: MIDA Penang

Note: Slight discrepancies may occur due to rounding. Data is subject to adjustments and revisions by MIDA.

## Approved Manufacturing Projects and Investment by State, 2001-2004

State	No. of Projects				Investment (RM Million)			
	2001	2002	2003	2004 (Jan - June)	2001	2002	2003	2004 (Jan - June)
<b>Wilayah Persekutuan</b>								
Kuala Lumpur	23	22	20	13	229.4	1,112.6	386.4	42.3
Labuan	1	1	-	-	9.0	12.5	-	-
Selangor	302	238	306	170	5,825.3	3,823.2	5,010.7	1960.0
<b>Pulau Pinang</b>	<b>124</b>	<b>111</b>	<b>137</b>	<b>71</b>	<b>3,837.3</b>	<b>2,418.1</b>	<b>1,993.0</b>	<b>788.5</b>
Perak	48	46	65	27	964.5	452.0	2,825.7	697.2
Johor	191	191	219	130	2,462.7	2,333.4	1,956.8	1174.7
Negeri Sembilan	34	34	46	16	2,309.9	767.8	1,844.1	322.2
Melaka	37	23	37	28	3,453.0	573.2	4,057.7	369.3
Kedah	70	47	49	32	698.5	532.1	879.4	165.7
Pahang	22	13	17	10	347.3	271.3	922.7	517.3
Kelantan	10	6	7	3	181.7	9.5	52.2	71.4
Terengganu	7	4	7	1	15.3	4,740.3	484.8	10.7
Perlis	4	3	3	1	14.1	6.4	30.6	0.5
Sabah	24	20	20	18	4,789.4	348.6	153.5	122.0
Sarawak	31	33	32	16	637.7	476.0	8,568.4	917.5
<b>Total</b>	<b>928</b>	<b>792</b>	<b>965</b>	<b>536</b>	<b>25,774.9</b>	<b>17,876.9</b>	<b>29,096.0</b>	<b>7,159.3</b>

Source: MIDA Penang

Note: Slight discrepancies may occur due to rounding. Data is subject to adjustments and revisions by MIDA.

**Penang: Manufacturing Industry - Principal Statistics**

Industry Description	No. of Establishments			Total Employees		
	1996	1997	1999	1996	1997	1999
Food Products	270	104	110	8,683	7,851	7,549
Oil & Fats	16	12	-	1,128	952	-
Textile & Apparel	197	65	59	20,004	17,984	20,049
Wood Products excluding furniture	67	19	14	2,913	2,058	1,836
Wood-based furniture	61	8	4	675	1,126	817
Paper Products	152	52	44	9,131	9,286	10,865
Chemical Products	58	32	32	4,248	4,439	4,684
Rubber Products	32	16	12	7,390	9,206	6,415
Plastic Products	108	35	26	10,070	10,973	9,223
Non-metallic Mineral Products	40	14	11	1,482	845	1,057
Basic Iron & Steel Industry	84	26	22	5,870	4,919	4,366
Non-Ferrous Metal Products	10	8	6	2,230	2,044	1,574
Fabricated Metal Products	165	42	39	5,744	7,039	5,341
Non-electrical Machinery	113	47	41	17,192	22,251	17,921
Electrical Machinery	132	64	64	117,038	116,845	111,530
Motor Vehicles & Other Transport	26	16	19	3,498	3,166	2,991
Scientific & Optical Equipment	9	10	10	4,288	4,403	4,585
Others	72	39	47	7,161	6,553	6,565
<b>TOTAL</b>	<b>1612</b>	<b>609</b>	<b>545</b>	<b>228,745</b>	<b>231,940</b>	<b>217,368</b>

Source: Derived from data provided by DOS, Penang

Industry Description	Value Added (RM '000)			Value Added per Employee (RM)		
	1996	1997	1999	1996	1997	1999
Food Products	449,794	502,584	553,997	51,802	64,015	73,387
Oil & Fats	84,013	99,709	-	74,480	104,736	-
Textile & Apparel	540,001	636,663	687,076	26,995	35,402	34,270
Wood Products excluding furniture	74,462	54,197	80,101	25,562	26,335	43,628
Wood-based furniture	18,351	27,919	23,182	27,187	24,795	28,375
Paper Products	360,418	415,627	424,755	39,472	44,758	39,094
Chemical Products	410,719	470,238	570,892	96,685	105,933	121,881
Rubber Products	359,762	615,850	528,053	48,682	66,897	82,315
Plastic Products	347,122	429,905	457,081	34,471	39,178	49,559
Non-metallic Mineral Products	71,413	58,627	75,215	48,187	69,381	71,159
Basic Iron & Steel Industry	531,305	443,918	391,706	90,512	90,246	89,717
Non-Ferrous Metal Products	71,446	100,363	87,018	32,039	49,101	55,285
Fabricated Metal Products	281,155	318,476	259,368	48,948	45,244	48,562
Non-electrical Machinery	1,075,660	1,889,346	1,159,172	62,567	84,911	64,682
Electrical Machinery	5,797,228	6,945,405	10,407,228	49,533	59,441	93,313
Motor Vehicles & Other Transport	251,036	302,918	185,494	71,766	95,678	62,017
Scientific & Optical Equipment	144,224	127,978	195,518	33,634	29,066	42,643
Others	190,716	177,179	265,720	26,633	27,038	40,475
<b>TOTAL</b>	<b>11,058,825</b>	<b>13,596,902</b>	<b>16,342,573</b>	<b>48,346</b>	<b>58,622</b>	<b>75,184</b>

Source: Derived from data provided by DOS, Penang

Industry Description	Fixed Assets (RM '000)			Salaries/Wages (RM'000)		
	1996	1997	1999	1996	1997	1999
Food Products	480,079	603,470	710,588	109,617	118,391	126,384
Oil & Fats	109,714	184,952	-	18,925	18,246	-
Textile & Apparel	627,836	518,318	547,554	264,245	243,811	299,196
Wood Products excluding furniture	98,772	83,569	56,057	33,892	24,374	25,035
Wood-based furniture	12,136	34,981	23,799	5,640	12,218	7,140
Paper Products	753,580	815,447	711,264	131,499	145,972	146,634
Chemical Products	1,179,135	1,234,920	1,037,524	87,424	98,121	109,632
Rubber Products	364,477	485,947	234,267	99,216	139,511	93,281
Plastic Products	433,543	727,924	580,155	120,826	145,153	137,438
Non-metallic Mineral Products	121,160	93,703	106,852	21,959	16,110	20,051
Basic Iron & Steel Industry	1,207,705	1,554,768	1,640,004	107,147	100,411	97,295
Non-Ferrous Metal Products	133,676	127,456	124,482	39,402	39,290	33,251
Fabricated Metal Products	499,129	515,000	443,717	68,542	92,627	77,458
Non-electrical Machinery	996,904	1,509,561	1,445,011	254,953	372,526	424,238
Electrical Machinery	4,814,563	6,900,095	7,432,756	1,698,672	1,853,198	2,116,766
Motor Vehicles & Other Transport	162,632	167,354	147,899	58,319	60,443	57,304
Scientific & Optical Equipment	156,939	153,980	158,638	73,872	79,969	94,072
Others	161,055	198,008	265,504	82,089	86,525	76,789
<b>TOTAL</b>	<b>12,313,035</b>	<b>15,909,453</b>	<b>15,666,076</b>	<b>3,276,239</b>	<b>3,646,896</b>	<b>3,954,964</b>

Source: Derived from data provided by DOS, Penang

Industry Description	Tech. Coef. Of Labour			Capital Intensity (RM)		
	1996	1997	1999	1996	1997	1999
Food Products	0.0515	0.050788	0.0333	55,290	76,865	94,130
Oil & Fats	0.0180	0.010606	-	97,264	194,277	-
Textile & Apparel	0.1412	0.121092	0.1308	31,386	28,821	27,311
Wood Products excluding furniture	0.1229	0.115312	0.1264	33,907	40,607	30,532
Wood-based furniture	0.1054	0.132739	0.0988	17,979	31,067	29,130
Paper Products	0.1207	0.132671	0.1298	82,530	87,815	65,464
Chemical Products	0.0542	0.048993	0.0425	277,574	278,198	221,504
Rubber Products	0.0993	0.105401	0.0934	49,320	52,786	36,519
Plastic Products	0.1345	0.137378	0.1301	43,053	66,338	62,903
Non-metallic Mineral Products	0.1053	0.080703	0.1385	81,754	110,891	101,090
Basic Iron & Steel Industry	0.0475	0.049095	0.0573	205,742	316,074	375,631
Non-Ferrous Metal Products	0.0434	0.040056	0.0320	59,944	62,356	79,086
Fabricated Metal Products	0.0868	0.090061	0.0879	86,896	73,164	83,078
Non-electrical Machinery	0.0514	0.047616	0.0417	57,987	67,842	80,632
Electrical Machinery	0.0724	0.074678	0.0558	41,137	59,053	66,644
Motor Vehicles & Other Transport	0.0642	0.069487	0.0902	46,493	52,860	49,448
Scientific & Optical Equipment	0.2173	0.245376	0.2033	36,600	34,972	34,599
Others	0.1179	0.072871	0.1613	22,491	30,216	40,442
<b>TOTAL</b>	<b>0.0736</b>	<b>0.071328</b>	<b>0.0333</b>	<b>53,829</b>	<b>68,593</b>	<b>72,071</b>

Source: Derived from data provided by DOS, Penang

Note: No further survey since 1999

## TERTIARY SECTOR UTILITIES

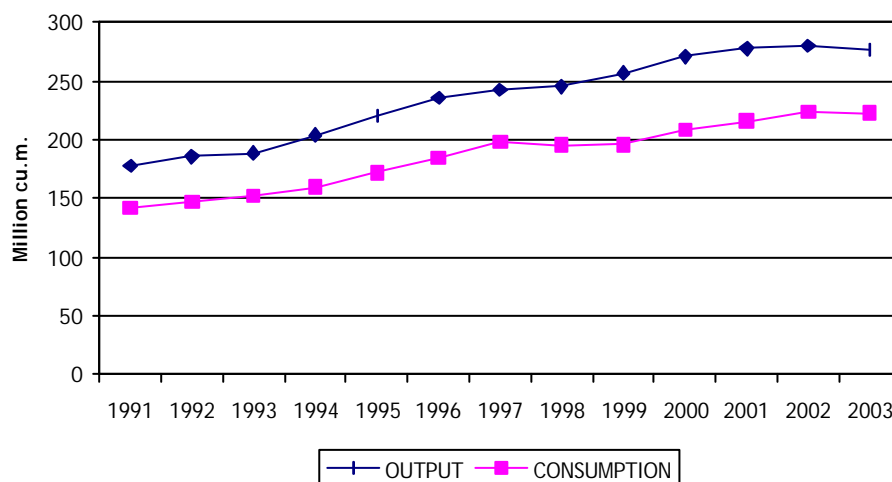
### WATER

**Penang: Water Output And Consumption ('000 cubic Metres), 1991-2004**

Year	Output	% Increase	Consumption	% Increase
1991	177,829	-	141,866	-
1992	185,413	4.3%	147,424	3.9%
1993	188,685	1.8%	152,477	3.4%
1994	204,006	8.1%	159,598	4.7%
1995	220,550	8.1%	172,321	8.0%
1996	236,124	7.1%	184,541	7.1%
1997	242,531	2.7%	198,038	7.3%
1998	245,425	1.2%	195,668	-1.2%
1999	257,307	4.8%	195,801	0.1%
2000	271,258	5.4%	208,183	6.3%
2001	278,395	2.6%	216,380	3.9%
2002	280,161	0.6%	224,632	3.8%
2003	277,066	-1.1%	223,390	-0.6%
2003 (Jan-June)	137,419	6.1%	111,319	1.5%
2004 (Jan-June)	145,814		113,018	

Source: Derived from data provided by Perbadanan Bekalan Air Pulau Pinang Sdn Bhd (PBAPP)

**Penang: Water Consumption and Output**



Source: Derived from data provided by Perbadanan Bekalan Air Pulau Pinang Sdn Bhd

**Penang: Daily Water Supply and Consumption, Jan - June 2004**

	January			February		
	Penang Island	Seberang Perai	Penang State	Penang Island	Seberang Perai	Penang State
No. of Treatment Plants	6	4	10	6	4	10
Max. Capacity of Treatment Plants (cu.m/day)	323,000	843,275	1,166,275	323,000	843,275	1,166,275
Average Daily Production (cu.m)	385,409	412,968	798,377	380,913	413,791	794,704
	<b>January / February</b>					
Average Daily Consumption (cu.m)				299,856	308,516	608,371
No. of Services (consumers)				202,853	203,222	406,075
<b>Daily Consumption (cu.m)</b>						
Per Consumer				1.48	1.52	1.50
Per Industrial Consumer				5.05	4.16	4.61
Per Domestic Consumer				1.08	1.12	1.10
	March			April		
	Penang Island	Seberang Perai	Penang State	Penang Island	Seberang Perai	Penang State
No. of Treatment Plants	6	4	10	6	4	10
Max. Capacity of Treatment Plants (cu.m/day)	323,000	843,275	1,166,275	323,000	843,275	1,166,275
Average Daily Production (cu.m)	374,336	417,651	791,986	373,129	431,052	804,181
	<b>March / April</b>					
Average Daily Consumption (cu.m)				297,880	309,923	607,802
<b>No. of Services (consumers)</b>				203,966	204,790	408,756
Daily Consumption (cu.m)						
Per Consumer				1.46	1.51	1.49
Per Industrial Consumer				5.45	4.52	4.99
Per Domestic Consumer				1.01	1.06	1.04
	May			June		
	Penang Island	Seberang Perai	Penang State	Penang Island	Seberang Perai	Penang State
No. of Treatment Plants	6	4	10	6	4	10
Max. Capacity of Treatment Plants (cu.m/day)	323,000	843,275	1,166,275	323,000	843,275	1,166,275
Average Daily Production (cu.m)	372,537	435,992	808,528	371,851	437,356	809,207
	<b>May / June</b>					
Average Daily Consumption (cu.m)				318,758	327,798	646,557
No. of Services (consumers)				205,174	206,742	411,916
<b>Daily Consumption (cu.m)</b>						
Per Consumer				1.55	1.59	1.57
Per Industrial Consumer				5.73	4.56	5.15
Per Domestic Consumer				1.08	1.14	1.11

Source: Derived from data provided by Perbadanan Bekalan Air Pulau Pinang Sdn Bhd

**ELECTRICITY****Penang: Electricity Supplied and Consumed, 1999/2000 - 2003/2004**

	1999/2000	2000/2001	2001/2002	2002/2003	2003/2004*
Unit Sales Growth	13.63%	7.12%	2.40%	5.77%	n.a
Domestic (GwH)	787,406,661	885,820,883	963,900,938	1,040,953,249	244,928,492
Commercial (GwH)	1,254,205,357	1,375,502,841	1,463,505,369	1,552,649,252	393,209,377
Industrial (GwH)	4,702,024,364	4,961,466,007	4,958,830,792	5,137,875,198	1,383,755,085
Public Lighting	34,382,625	37,929,044	48,606,790	132,276,415	n.a
Total	6,778,019,007	7,260,718,775	7,434,843,889	7,863,754,114	n.a

\* As of November 2003

Source: Tenaga Nasional Berhad, Penang.



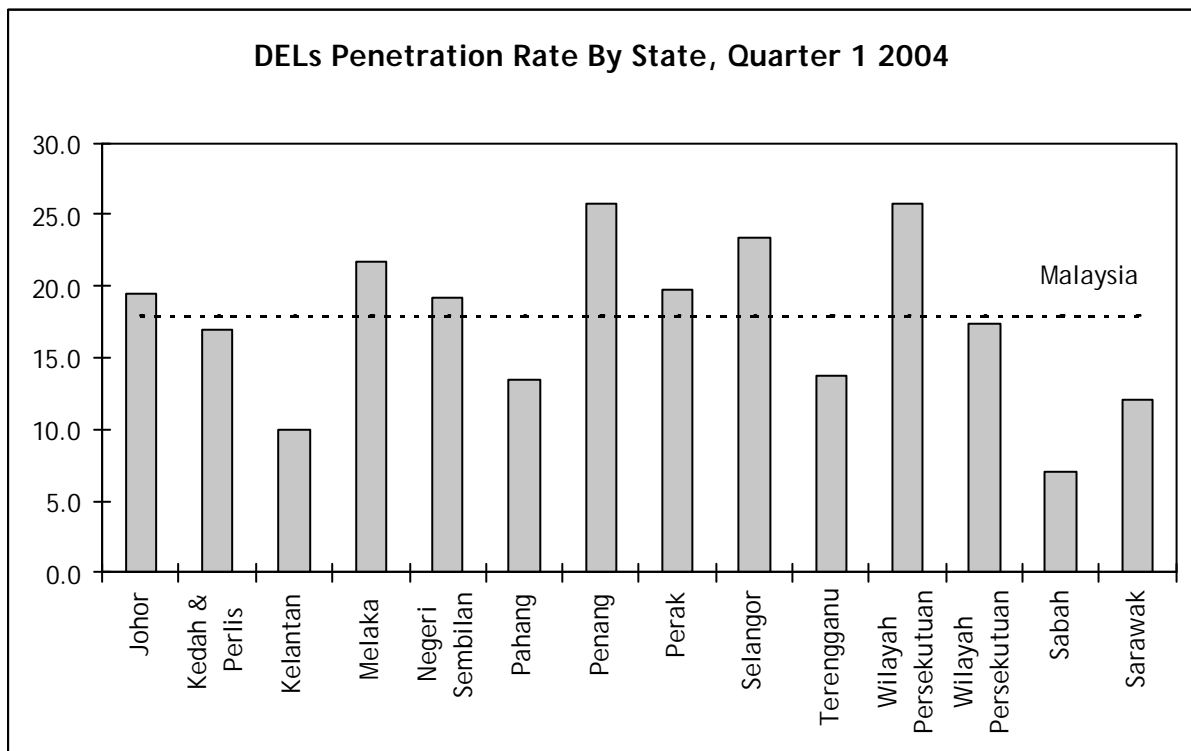
## TELECOMMUNICATIONS

### Direct Exchange Line (DEL) Penetration Rate by State, 2003 & 2004

State	2003	2004
		Quarter 1
Johor	19.5	19.5
Kedah & Perlis	15.2	17.0
Kelantan	10.1	10.0
Melaka	22.2	21.7
Negeri Sembilan	19.2	19.2
Pahang	13.7	13.5
<b>Penang</b>	<b>25.9</b>	<b>25.8</b>
Perak	20.0	19.8
Selangor	23.6	23.4
Terengganu	13.8	13.7
Wilayah Persekutuan Kuala Lumpur	25.9	25.7
Wilayah Persekutuan Labuan	17.7	17.4
Sabah	7.2	7.1
Sarawak	12.2	12.1
<b>Malaysia</b>	<b>18.1</b>	<b>17.9</b>

Note: Direct Exchange Line (DEL) connects a customer's equipment to the Public Switched telephone Network (PSTN) and has a dedicated port on a telephone exchange.

Source: Malaysian Communications and Multimedia Commission (MCMC)

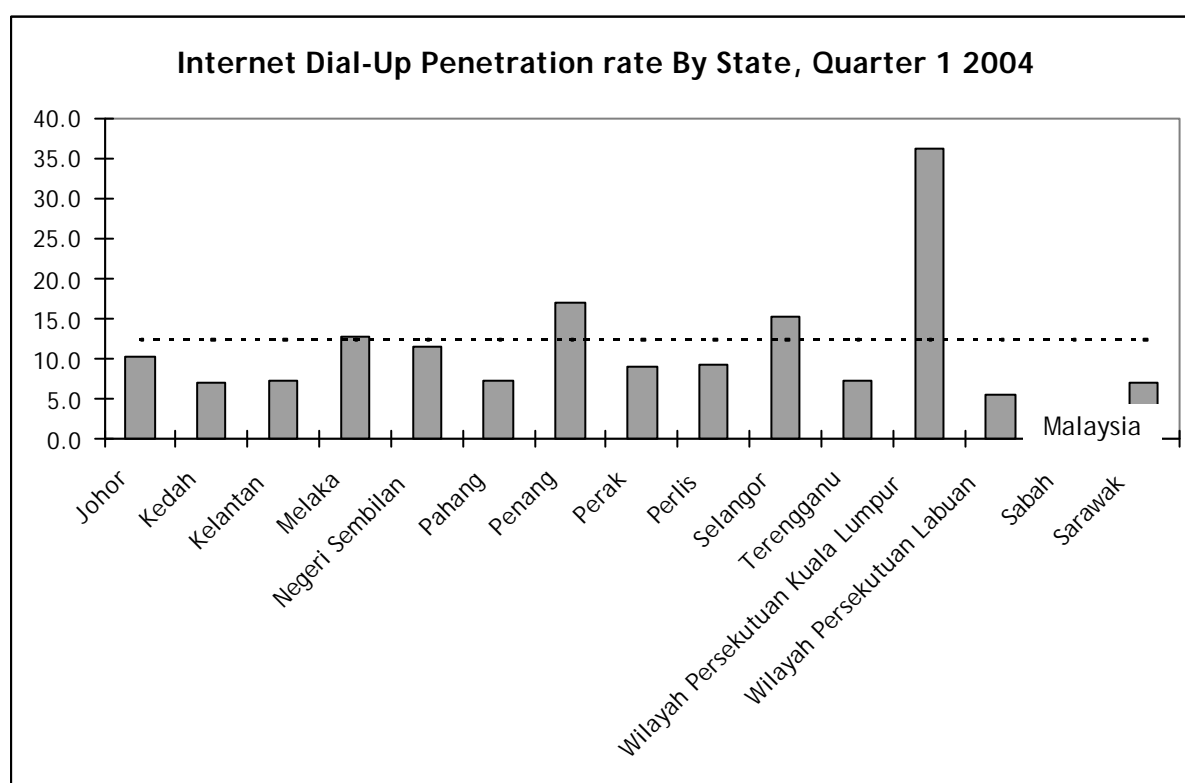


Source: Malaysian Communications and Multimedia Commission (MCMC)

### Internet Dial-Up Penetration Rate by State, 2003 & 2004

State	2003	2004
		Quarter 1
Johor	9.6	10.4
Kedah	6.3	7.1
Kelantan	6.9	7.3
Melaka	11.5	12.8
Negeri Sembilan	10.5	11.5
Pahang	6.7	7.4
<b>Penang</b>	<b>15.8</b>	<b>17.0</b>
Perak	8.0	9.1
Perlis	8.3	9.3
Selangor	14.2	15.3
Terengganu	6.6	7.2
Wilayah Persekutuan Kuala Lumpur	32.8	36.3
Wilayah Persekutuan Labuan	17.8	5.6
Sabah	3.6	4.0
Sarawak	6.2	7.0
<b>Malaysia</b>	<b>11.4</b>	<b>12.4</b>

Source: MCMC, PIKOM



Source: MCMC, PIKOM

## TRANSPORT

### ROAD TRANSPORT

#### New Motor Vehicle Registration, 2004

Month	Region	Motorcycle	Private Passenger Car	Taxi	Bus	Lorry & Van	Hire Car	Others	Total
January	Penang	3,896	3,632	7	6	167	4	53	7,765
	Malaysia	33,936	34,135	363	110	1,981	96	1,016	71,637
February	Penang	3,165	2,968	11	11	109	2	21	6,287
	Malaysia	31,298	28,970	404	87	1,825	104	968	63,656
March	Penang	4,093	4,157	9	7	254	3	43	8,566
	Malaysia	35,914	40,268	531	68	2,943	146	2,002	81,872
April	Penang	4,110	4,035	24	6	205	7	37	8,424
	Malaysia	34,886	39,530	666	90	2,958	94	1,433	79,657
May	Penang	3,725	3,678	29	19	227	9	65	7,752
	Malaysia	31,403	36,024	716	119	2,688	126	1,190	72,266
June	Penang	3,862	4,840	30	28	231	6	72	9,069
	Malaysia	33,858	44,087	897	134	3,189	126	1,173	83,464
July	Penang	4,170	5,126	39	12	242	4	31	9,624
	Malaysia	36,153	47,416	904	118	3,319	100	1,350	89,360

Source: Derived from the statistics provided by Jabatan Pengangkutan Jalan, Malaysia

#### Motor Vehicle Re-registration, 2004

Month	Region	Motorcycle	Private Passenger Car	Taxi	Bus	Lorry & Van	Hire Car	Others	Total
January	Penang	780,571	529,513	2,672	4,173	42,937	383	14,164	1,374,413
	Malaysia	6,199,306	5,463,722	60,882	53,034	742,248	10,181	362,038	12,891,411
February	Penang	784,789	532,657	2,686	4,191	43,084	382	14,177	1,381,966
	Malaysia	6,231,728	5,493,430	61,052	53,156	743,893	10,228	362,931	12,956,418
March	Penang	789,799	536,961	2,693	4,220	43,421	376	14,193	1,391,663
	Malaysia	6,268,665	5,534,427	61,294	53,327	746,682	10,271	364,802	13,039,468
April	Penang	794,797	541,263	2,726	4,238	43,700	381	14,258	1,401,363
	Malaysia	6,304,537	5,574,912	61,616	53,466	749,510	10,293	366,145	13,120,479
May	Penang	798,916	545,068	2,749	4,263	44,038	391	14,355	1,409,780
	Malaysia	6,336,376	5,611,721	62,032	53,628	752,123	10,358	367,216	13,193,454
June	Penang	802,957	549,990	2,776	4,313	44,353	393	14,467	1,419,249
	Malaysia	6,370,460	5,656,612	62,647	53,853	755,151	10,375	368,260	13,277,358
July	Penang	807,829	555,308	2,810	4,344	44,624	395	14,481	1,429,791
	Malaysia	6,407,342	5,704,966	63,176	54,047	758,318	10,379	369,443	13,367,671

Source: Derived from the statistics provided by Jabatan Pengangkutan Jalan, Malaysia

# TRADE

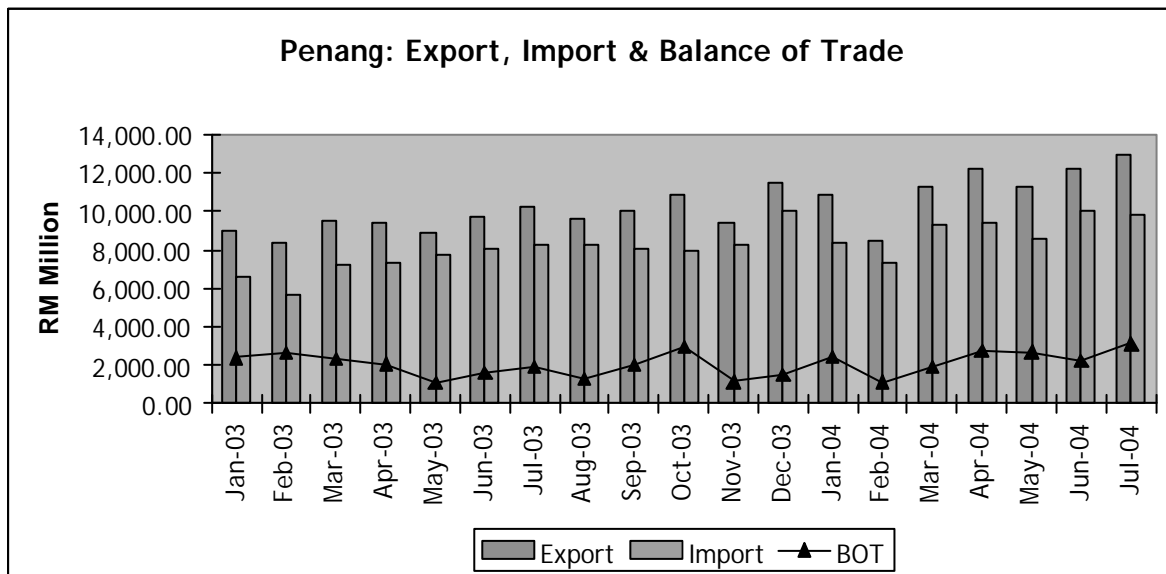
## TRADE BALANCE

### Export, Import & Balance of Trade (BOT), 2003 - 2004 (RM million)

2003	MALAYSIA			PENANG		
	Export	Import	BOT	Export	Import	BOT
Jan	31,644.26	24,583.18	7,061.08	9,035.23	6,636.85	2,398.39
Feb	27,132.66	21,299.64	5,833.02	8,353.40	5,707.24	2,646.17
Mar	33,168.64	25,860.56	7,308.08	9,568.46	7,214.29	2,354.17
Apr	32,223.42	25,476.81	6,746.61	9,429.30	7,374.19	2,055.11
May	31,983.34	25,056.14	6,927.20	8,863.61	7,793.83	1,069.77
Jun	32,526.40	25,045.42	7,480.98	9,681.03	8,071.94	1,609.10
Jul	33,094.07	27,846.40	5,247.67	10,233.08	8,313.72	1,919.37
Aug	33,496.30	25,855.70	7,640.60	9,578.43	8,277.73	1,300.70
Sept	34,462.84	27,478.79	6,984.05	10,034.65	8,018.20	2,016.45
Oct	37,200.56	30,446.89	6,753.66	10,865.53	7,922.61	2,942.92
Nov	33,236.26	26,610.55	6,625.71	9,408.19	8,259.53	1,148.66
Dec	38,713.10	32,186.18	6,526.92	11,514.32	10,017.86	1,496.46
<b>TOTAL</b>	<b>398,881.85</b>	<b>317,746.24</b>	<b>81,135.60</b>	<b>116,565.24</b>	<b>93,607.98</b>	<b>22,957.26</b>
2004	Export	Import	BOT	Export	Import	BOT
Jan	35,243.62	28,755.96	6,487.66	10,819.57	8,362.65	2,456.91
Feb	32,344.71	26,488.19	5,856.52	8,450.24	7,315.57	1,134.67
Mar	40,246.99	33,385.37	6,861.62	11,305.31	9,365.08	1,940.23
Apr	39,656.31	33,542.32	6,113.99	12,225.45	9,459.79	2,765.66
May	38,464.75	31,636.00	6,828.75	11,317.54	8,622.10	2,695.44
June	39,874.82	34,697.94	5,176.88	12,219.61	10,003.31	2,216.30
Jul	42,630.75	35,032.48	7,598.27	12,952.50	9,814.11	3,138.39
<b>TOTAL</b>	<b>268,461.96</b>	<b>223,538.27</b>	<b>44,923.68</b>	<b>79,290.22</b>	<b>62,942.62</b>	<b>16,347.60</b>

Source: Department of Statistics, Malaysia

Note: Data for 2004 is preliminary. Data is subject to adjustments and revisions by DOS.



Source: Derived from data provided by Department of Statistics, Malaysia

**PENANG AIRPORT****Aircraft Movement per annum, 1991-2004**

Year	No. of Movement
1991	30,818
1992	36,826
1993	35,034
1994	35,950
1995	35,556
1996	36,956
1997	35,445
1998	31,816
1999	27,465
2000	27,951
2001	29,102
2002	28,840
2003	26,474
2003 (Jan - July)	15,090
2004 (Jan - July)	16,419

Source: Derived from series of Airport Statistics, Malaysia Airports Berhad

**Number of Passengers (Domestic & International) per annum, 1991-2004**

Year	No. of Passengers (millions)		
	Domestic	International	Total
1991	1.27	0.90	2.17
1992	1.56	1.08	2.64
1993	1.65	1.13	2.78
1994	1.58	1.20	2.78
1995	1.60	1.25	2.85
1996	1.70	1.18	2.88
1997	1.68	1.23	2.91
1998	1.35	1.10	2.45
1999	1.35	1.10	2.45
2000	1.27	1.48	2.74
2001	1.20	1.35	2.55
2002	1.31	1.21	2.51
2003	1.43	1.00	2.43
2003 (Jan - July)	0.69	0.51	1.20
2004 (Jan - July)	0.93	0.74	1.67

Note: Slight discrepancies may arise due to rounding.

Source: Derived from series of Airport Statistics, Malaysia Airports Berhad

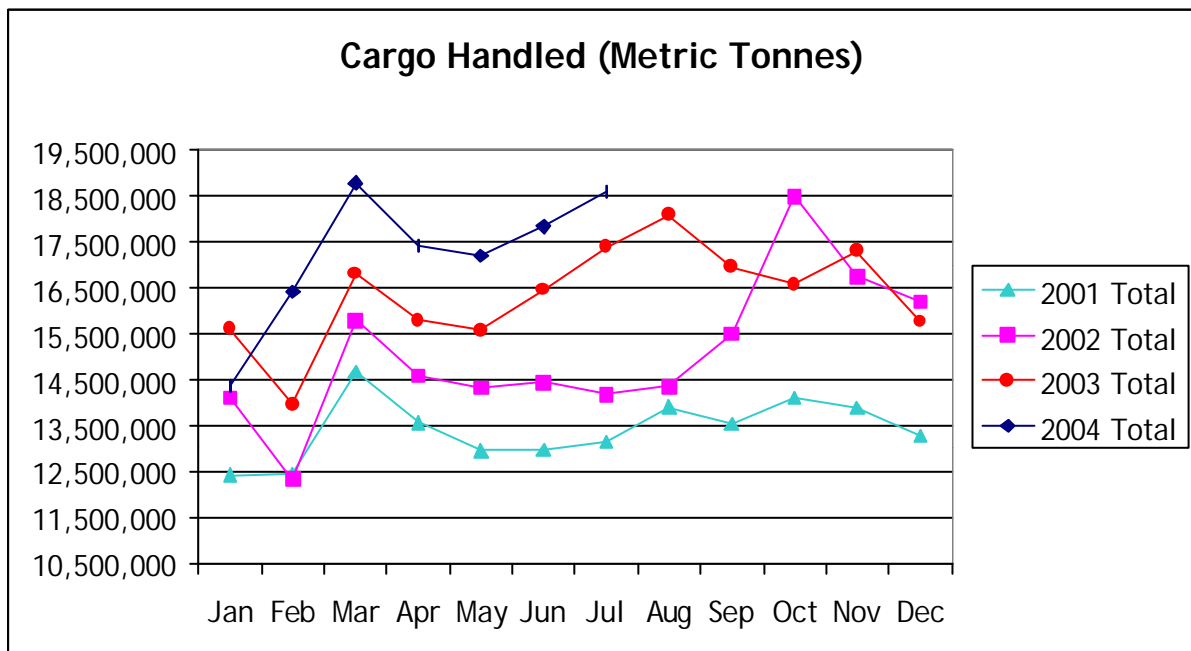
**Cargo Handled (Domestic & International) per annum, 1991-2004**

Year	Cargo Handled (in '000 metric tonnes)*		
	Domestic	International	Total
1991	12.06	25.72	37.78
1992	11.84	30.78	42.62
1993	13.21	33.42	46.63
1994	13.38	47.58	60.96
1995	16.13	70.70	86.83
1996	14.16	82.37	96.53
1997	15.96	106.21	122.17
1998	12.32	124.74	137.06
1999	10.62	133.89	144.51
2000	37.87	125.43	163.30
2001	34.87	126.15	161.02
2002	42.85	138.31	181.16
2003	30.79	165.60	196.39
2003 (Jan - July)	15.77	95.90	111.67
2004 (Jan - July)	19.53	101.15	120.69

\*The figures from 1993 onwards are based on new categorization method.

\*Note: Slight discrepancies may arise due to rounding.

Source: Derived from series of Airport Statistics, Malaysia Airports Berhad.



Source: Malaysia Airports Berhad

**PENANG PORT****Annual Number of Shipcalls, 1990-2004**

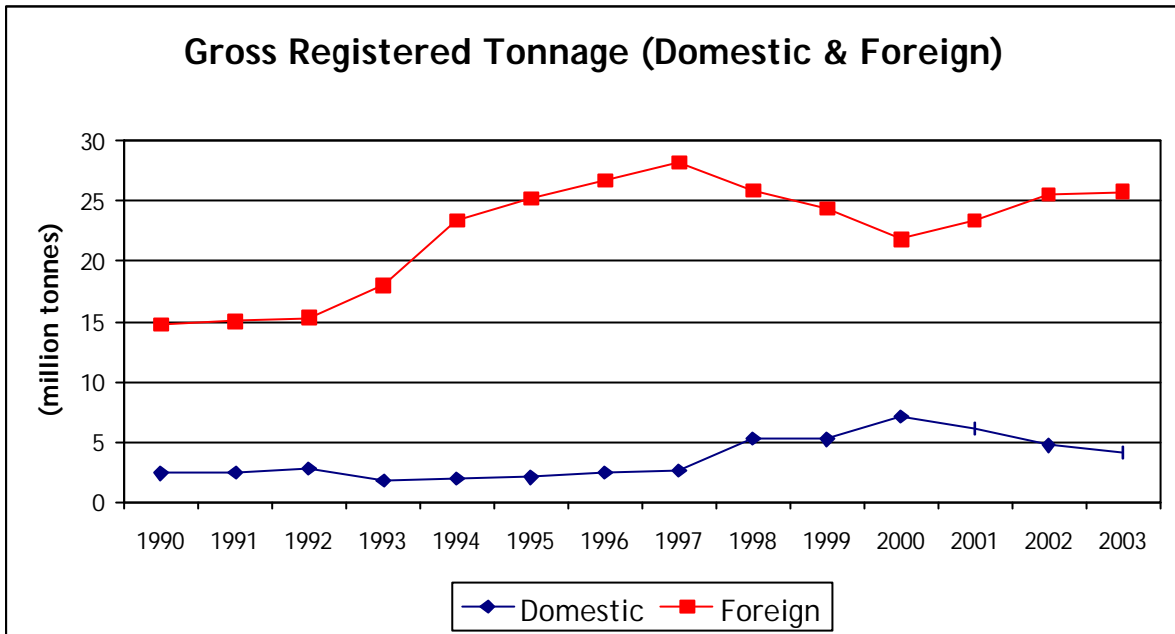
Year	Domestic	Foreign	Total
1990	2,437	3,091	5,528
1991	2,750	3,051	5,801
1992	3,058	3,208	6,266
1993	1,327	4,716	6,043
1994	1,379	4,820	6,199
1995	1,443	5,022	6,465
1996	1,416	5,117	6,533
1997	1,725	5,346	7,071
1998	2,553	5,072	7,625
1999	2,635	4,736	7,371
2000	3,250	4,013	7,263
2001	3,019	4,399	7,418
2002	2,824	4,748	7,572
2003	2,220	4,199	6,419
2003 (Jan - Aug)	1,357	2,902	4,259
2004 (Jan - Aug)	2,026	2,515	4,541

Source: Derived from the statistics provided by Penang Port Sdn Bhd

**Gross Registered Tonnage (Domestic & Foreign) in Million, 1990-2004**

Year	Domestic	Foreign	Total
1990	2.38	14.78	17.16
1991	2.41	15.05	17.46
1992	2.81	15.33	18.14
1993	1.75	18.02	19.77
1994	1.95	23.40	25.35
1995	2.06	25.26	27.32
1996	2.43	26.76	29.19
1997	2.59	28.23	30.82
1998	5.29	25.93	31.22
1999	5.19	24.35	29.54
2000	7.09	21.87	28.96
2001	6.11	23.37	29.48
2002	4.72	25.58	30.29
2003	4.14	25.80	29.94
2003 (Jan - Aug)	2.93	16.74	19.68
2004 (Jan - Aug)	2.69	19.27	21.96

Source: Derived from the statistics provided by Penang Port Sdn Bhd



Source: Derived from the statistics provided by Penang Port Sdn Bhd

### Type of Cargo Handled, 1990-2004

Year	General Cargo	(million freight tonnes)			Total	Container
		Dry Bulk	Liquid Bulk	Containerised		
1990	2.21	2.06	2.73	3.85	10.85	222,441
1991	2.02	2.31	2.94	4.79	12.06	251,849
1992	1.99	2.46	3.14	5.63	13.22	303,367
1993	1.96	2.90	3.28	6.22	14.36	330,915
1994	1.93	2.60	3.31	7.29	15.14	386,182
1995	2.12	2.99	3.46	8.10	16.67	433,474
1996	2.11	3.20	3.52	8.67	17.50	454,765
1997	2.59	3.37	4.11	9.62	19.69	506,863
1998	1.67	2.23	3.86	8.69	16.45	510,307
1999	1.85	2.77	3.99	10.15	18.76	566,409
2000	1.84	3.46	4.11	11.06	20.47	635,423
2001	2.00	3.75	4.10	10.61	20.45	604,294
2002	2.07	4.00	4.39	11.34	21.80	634,042
2003	1.89	4.08	4.18	12.24	22.39	688,171
2003 (Jan-Aug)	1.21	2.59	2.68	7.81	14.29	449,148
2004 (Jan-Aug)	1.25	2.43	2.77	8.79	15.24	506,806

Source: Derived from the statistics provided by Penang Port Sdn Bhd



## TOURISM

### Penang: Average Occupancy Rate, Number of Registered Guests and Estimated Total Visitor Arrivals, 2000-2003

	2000	2001	2002	2003
Average Occupancy Rate	57.4%	54.8%	53.9%	49.8%
Average Occupancy Rate for Beach Hotels	66.7%	57.5%	54.1%	46.7%
Average Occupancy for City Hotels	50.8%	53.0%	53.8%	51.9%
Estimated Total Visitor Arrivals for the State	3,780,000	3,469,943	3,425,308	3,026,619
Estimated Domestic Share	37.9%	44.5%	47.9%	61.7%
Estimated International Share	62.1%	55.5%	52.1%	38.3%

Source: Tourism Development Division, PDC & The Penang Hotel Survey Report, DCT Consultancy Services Sdn. Bhd.

## PROPERTY

### Penang: House Price Index, 1988 - 2003

Year	Indices				
	Terraced	High-Rise	Detached	Semi-Detached	All Houses
Weight (2000=100)	38.1	50.7	2.9	8.4	100.0
1988*	90.0	77.9	72.9	87.2	87.7
1989*	92.0	88.1	77.5	92.5	92.2
1990*	100.0	100.0	100.0	100.0	100.0
1991*	110.6	117.6	118.2	111.3	111.7
1992*	113.9	125.5	135.1	116.0	115.7
1993*	118.5	132.7	145.2	125.3	124.3
1994*	126.0	145.0	162.5	143.3	132.5
1995*	149.7	160.0	180.9	151.1	145.0
1996*	153.7	156.4	197.2	170.0	152.1
1997*	165.7	170.8	206.1	184.6	169.2
1998*	157.7	162.7	179.2	167.3	159.4
1999*	161.0	163.4	173.4	169.3	165.4
1999	99.3	98.7	95.5	93.2	97.8
2000**	100.0	100.0	100.0	100.0	100.0
2001	102.9	108.7	85.5	93.2	102.9
2002	115.6	95.1	97.6	96.0	102.6
2003	118.3	124.7	95.3	91.4	115.5

Source: The Malaysian House Price Index

\* - Indices with 1990 as the base year

\*\* - New Base year for the revised IHRM 2000

**Penang: Number of Property Transactions by Sector, 2002 & 2003**

	Residential		Commercial		Industrial		Agriculture		Development		Others		Total	
	2002	2003	2002	2003	2002	2003	2002	2003	2002	2003	2002	2003	2002	2003
Jan - Mar	2,827	2,903	295	296	75	96	211	307	253	247	14	31	3,675	3,880
Apr - Jun	3,674	3,219	398	331	102	89	262	202	222	270	9	45	4,667	4,156
Jul - Sept	3,366	3,676	326	531	114	126	216	125	271	490	9	47	4,302	4,995
Oct - Dec	2,327	3,379	331	432	116	134	167	63	236	472	14	17	3,191	4,497
Jan - Jun	6,501	6,122	693	627	177	185	473	509	475	517	23	76	8,342	8,036
Jan - Sept	9,867	9,798	1,019	1,158	291	311	689	634	746	1,007	32	123	12,644	13,031
Jan - Dec	12,194	13,177	1,350	1,590	407	445	856	697	982	1,479	46	140	15,835	17,528

Source: Property Market Report, 2003

**Penang: Value of Property Transactions by Sector, 2002 & 2003 (RM Million)**

	Residential		Commercial		Industrial		Agriculture		Development		Others		Total	
	2002	2003	2002	2003	2002	2003	2002	2003	2002	2003	2002	2003	2002	2003
Jan - Mar	431.74	467.53	102.63	135.57	79.92	66.71	20.63	49.08	187.46	114.26	11.95	8.84	834.34	841.99
Apr - Jun	540.44	518.47	155.04	154.36	43.59	49.18	32.77	35.44	134.60	112.44	1.90	9.78	908.33	879.66
Jul - Sept	497.75	615.25	204.79	168.92	56.10	89.28	33.49	25.78	223.22	214.40	3.80	11.34	1,019.15	1,124.97
Oct - Dec	372.25	577.74	95.30	145.68	64.91	89.76	37.12	10.01	98.34	191.02	3.29	2.39	671.20	1,016.59
Jan - Jun	972.18	986.00	257.67	289.93	123.51	115.88	53.40	84.52	322.07	226.70	13.85	18.62	1,742.67	1,721.65
Jan - Sept	1,469.93	1,601.25	462.45	458.85	179.61	205.16	86.89	110.30	545.29	441.10	17.65	29.96	2,761.83	2,846.62
Jan - Dec	1,842.18	2,178.99	557.76	604.53	244.52	294.92	124.01	120.31	643.63	632.11	20.94	32.34	3,433.03	3,863.21

Source: Property Market Report, 2003

**Penang: Average Value of Property by Sector, 2002 & 2003 (RM)**

	Residential		Commercial		Industrial		Agriculture		Development		Others		Total	
	2002	2003	2002	2003	2002	2003	2002	2003	2002	2003	2002	2003	2002	2003
Jan-Mar	152,722	161,049	347,895	458,020	1,065,591	694,860	97,781	159,869	740,966	462,608	853,673	285,265	227,032	217,009
Apr-Jun	147,098	161,066	389,540	466,331	427,354	552,541	125,066	175,467	616,327	416,427	210,813	217,259	194,629	211,660
Jul-Sept	147,876	167,371	628,184	318,122	492,110	708,576	155,041	206,223	823,701	437,542	422,541	241,241	236,902	225,219
Oct-Dec	159,968	170,979	287,921	337,218	559,528	669,844	222,298	158,875	416,685	404,697	234,721	140,306	210,342	226,059
Jan-Jun	149,543	161,058	371,812	432,408	697,793	626,393	112,894	166,059	678,040	438,490	602,119	244,999	208,904	214,243
Jan-Sept	148,975	163,427	453,831	396,245	617,216	659,689	126,107	173,978	730,954	438,029	551,613	243,563	218,430	218,450
Jan-Dec	151,072	165,363	413,153	380,208	600,775	662,747	144,873	172,613	655,427	427,391	455,167	231,024	216,800	220,402

Source: Property Market Report, 2003

## EDUCATION

### Penang: Number of Schools, Students & Teachers at the Primary Level, 2001-2003

Type of School	No. of Schools			No. of Students			No. of Teachers		
	2001	2002	2003	2001	2002	2003	2001	2002	2003
SK/SRK	127	134	139	80,230	83,369	88,562	4,200	4,408	4,929
SRJK(C)	90	90	90	53,808	55,645	56,810	2,607	2,658	2,867
SRJK(T)	28	28	28	4,848	5,079	5,315	346	336	368
SR Khas	3	3	3	164	170	154	45	51	54
<b>Total</b>	<b>248</b>	<b>255</b>	<b>260</b>	<b>139,050</b>	<b>144,263</b>	<b>150,841</b>	<b>7,198</b>	<b>7,453</b>	<b>8,218</b>

Source: Jabatan Pendidikan Negeri, Pulau Pinang

### Penang: Number of Schools, Students & Teachers at the Secondary Level, 2001-2003

Type of School	No. of Schools			No. of Students			No. of Teachers		
	2001	2002	2003	2001	2002	2003	2001	2002	2003
SMK	75	83	89	104,295	102,428	101,877	5,837	6,039	6,186
SM (Asrama Penuh)	1	1	1	624	666	662	72	66	65
SM Khas	1	1	1	197	192	203	44	41	44
SM Vokasional & Teknik	5	6	6	2,299	3,349	3,352	343	374	402
SM Agama	4	4	4	2,958	2,565	2,646	206	215	228
<b>Total</b>	<b>86</b>	<b>95</b>	<b>101</b>	<b>110,373</b>	<b>109,200</b>	<b>108,742</b>	<b>6,502</b>	<b>6,735</b>	<b>6,925</b>

Source: Jabatan Pendidikan Negeri, Pulau Pinang

### Penang: Number of Students Taking Public Exams and Passing Rates, 2002-2003

	No. of Students		No. of Passes		Passing Rate (%)	
	2002	2003	2002	2003	2002	2003
UPSR	22,673	22,855	13,861	14,648	61.2%	64.1%
PMR	19,337	19,227	12,982	18,311	67.0%	95.2%
SPM	19,236	n.a	16,421	n.a	85.4%	n.a
STPM	3,909	n.a	2,967	n.a	98.7%	n.a

Source: Jabatan Pendidikan Negeri, Pulau Pinang

### Penang: Number of Dropouts, 2001-2003

	2001	2002	2003
Primary School Level	78	75	68
Secondary School Level	1,117	1,002	981

Source: Jabatan Pendidikan Negeri, Pulau Pinang

### Penang: Number of Private Education Institutions (as of September 2003)

Type of Institution	Number of Institutions	Number of Students	Number of Teachers
Private Primary Schools	2*	258	38
Private Secondary Schools	3*	516	42
Private Religious Primary Schools	0*	0	0
Private Religious Secondary Schools	0*	0	0
Chinese Independent Schools	5	2,622	244
International Schools	3	1,132	139
Expatriate Schools	2	300	94
Special Need Schools	2	78	15
Kindergartens	287	9,517	1,849
<b>Total Private Education Institutions</b>	<b>304</b>	<b>14,423</b>	<b>2,421</b>

Note: \* - 2002 Data

Source: Jabatan Pendidikan Swasta, Malaysia

**Penang: Number of Private Higher Education Institutions (as of September 2003)**

Type of Institution	Number of Institutions	Number of Students
Private Universities	0	0
University Colleges	0	0
Foreign University Branch Campuses	0	0
Malaysian Branch Campuses Overseas	0	0
Private Colleges	46	17,445
<b>Total Private Higher Education Institutions</b>	<b>46</b>	<b>17,445</b>

Source: *Jabatan Pendidikan Swasta, Malaysia*

**Penang: USM - Students Enrolment by Study Programme**

Programme	Academic Year		
	2000/2001	2001/2002	2002/2003
Physics [Sains Fizik]	331	372	372
Applied Sciences (Physics) [Sains Gunaan (Fizik)]	267	302	406
Biological Sciences [Sains Kajihayat]	350	399	401
Applied Sciences (Biology) [Sains Gunaan (Biologi)]	466	481	467
Chemical Sciences [Sains Kimia]	380	432	447
Applied Sciences (Chemistry) [Sains Gunaan (Kimia)]	306	327	339
Mathematical Sciences [Sains Matematik]	367	401	390
Applied Sciences (Mathematics) [Sains Gunaan (Matematik)]	451	503	534
Science with Education [Sains dgn. Pendidikan]	780	910	952
Pharmaceutical Sciences [Sains Farmasi]	441	439	463
Medical Sciences [Sains Perubatan]	964	961	922
Dental Sciences [Sains Pergigian]	81	117	173
Health Sciences (Biomedicine) [Sains Kesihatan (Bioperubatan)]	36	61	94
Health Sciences (Nursing) [Sains Kesihatan (Kejururawatan)]	20	46	87
Health Sciences (Dietetic) [Sains Kesihatan (Dietetik)]	25	51	86
Science (Forensic Science) [Sains (Sains Forensik)]	30	57	90
Health Sciences (Medical Rays) [Sains Kesihatan (Sinaran Perubatan)]	0	27	58
Computer Sciences [Sains Komputer]	671	657	667
Industrial Technology [Teknologi Industri]	921	942	911
Housing, Building & Planning [Perumahan, Bangunan & Perancangan]	664	689	700
Architecture [Seni Bina]	64	64	63
Civil Engineering [Kejuruteraan Awam]	471	487	453
Electrical & Electronic Engineering [Kejuruteraan Elektrik & Elektronik]	553	561	585
Materials & Mineral Resources Engineering [Kejuruteraan Bahan & Sumber Mineral]	467	483	466
Polymer Engineering [Kejuruteraan Polimer]	0	0	59
Mechanical Engineering [Kejuruteraan Mekanik]	388	387	367
Manufacturing with Management Engineering [Kejuruteraan Pembuatan & Pengurusan]	65	94	117
Chemical Engineering [Kejuruteraan Kimia]	383	353	330
Aerospace Engineering [Kejuruteraan Aeroangkasa]	164	161	168
Humanities [Ilmu Kemanusiaan]	669	704	679
Arts (English Language & Literature Studies) [Sastera (Bahasa Inggeris & Kesusasteraan)]	218	156	99
Arts (Translation & Interpretation) [Sastera (Terjemahan & Intepretasi)]	191	162	172
Social Sciences [Sains Kemasyarakatan]	1,070	1,085	1,009
Arts with Education [Sastera dengan Pendidikan]	1,046	1,054	972
Educational Studies [Ilmu Pendidikan]	311	286	284
Multimedia Education [Pendidikan Multimedia]	0	0	40
TESOL Education [Pendidikan TESOL]	0	0	49
Communication [Komunikasi]	596	637	626
Management [Pengurusan]	902	979	986
Accounting [Perakaunan]	296	369	363
Arts (Art)	135	136	131
Fine Art [Seni Halus]	69	117	124
Music [Seni Muzik]	13	19	24
<b>Total</b>	<b>15,622</b>	<b>16,468</b>	<b>16,725</b>

Source: *Universiti Sains Malaysia, Penang*

## HEALTH

### Life Expectancy at Birth (Malaysia):

	2002 (Projections)	2003 (Projections)	2004 (Projections)
Male	70.7	71.0	71.0
Female	75.3	75.5	76.0

Source: Department of Statistics, Malaysia

### Life Expectancy at Birth (Penang):

	2003
Male	70.4
Female	75.3

Source: Penang State Health Department

### Vital Statistics of Penang (per thousand), 1994-2004 (Jan - June)

	1994	1995	1996	1997	1998	1999	2000	2002	2003	2004
Crude Birth Rate	22.8	24.9	23.6	21.8	20.8	20.9	19.00	18.17	17.76	N/a
Crude Death Rate	6.3	5.9	6.4	6.2	6.2	6.09	6.00	6.01	5.35	N/a
Infant Mortality Rate	8.7	7.2	7.5	7.0	6.2	5.55	5.31	6.5	4.8	1.60
Prenatal Mortality Rate	12.5	9.9	9.5	8.6	8.3	8.97	7.35	9.2	6.6	2.70
Neonatal Mortality Rate	6.3	5.0	5.3	4.9	4.1	3.98	4.90	4.6	3.8	1.30
Toddler Mortality Rate	0.3	0.4	0.4	0.3	0.4	0.19	0.15	0.2	0.3	0.0
Maternal Mortality Rate	0.6	0.3	0.3	0.4	0.5	0.16	0.16	0.6	0.3	0.0

Source: Penang State Health Department

### Penang: Ratio of Medical Professionals - Population, 1994-2003

	1994	1995	1996	1997	1998	1999	2000	2001	2002	2003
Doctor	1:1514	1:1482	1:1432	1:1353	1:1244	1:1194	1:1145	1:1031	1:1028	1:1014
Dentist	1:9365	1:9576	1:8882	1:9258	1:9425	1:8203	1:7871	1:7729	1:8912	1:8335
Nurse	1:713	1:669	1:677	1:728	1:689	1:633	1:600	1:577	1:596	1:569

Source: Penang State Health Department

### Penang: Health Facilities 1998-2004 (Jan - June)

	1998	1999	2000	2002	2003	2004
Government Hospital	5	5	5	5	6	6
Private Hospital	11	11	11	11	11	11
Private Maternity Home	7	8	8	8	8	8
Private Medical Centre	6	6	6	3	6	6
Mother & Child Health Care	12	12	12	14	14**	14**
Health Centre	16	16	16	30*	30*	30*
Rural Clinics	61	61	61	62	62	62
Midwives-quarters-cum-clinics	3	3	3	2	2	2

\* Inclusive of Polyclinic & Hospitals' Outpatient Department

\*\* Inclusive of MCH Clinic located in Health Clinic Building

Source: Penang State Health Department

**Penang: Number of Hospital Beds (Government & Private) and Ratio of Hospital Beds to Population, 2004 (Jan - June)**

Total	Government 1955	Private 1960	Total 3915	Ratio 1:368

Source: Penang State Health Department

**Penang: Number of Beds, Bed Occupancy Rate (BOR) & Average Length of Stay (ALOS) for Government Hospitals, 2004**

Hospital	2004 (Jan - June)		
	Beds	BOR	ALOS
Hospital Pulau Pinang	1,090	62.20	5.33
RHSP (Hospital Seberang Jaya)	314	87.42	3.01
RHSP (Hospital Bukit Mertajam)	242	41.93	3.26
Hospital Sungai Bakap	130	36.39	2.83
Hospital Balik Pulau	71	64.18	6.31
Hospital Kepala Batas*	108	29.84	3.29
<b>Total</b>	<b>1,955</b>	<b>60.31</b>	<b>4.16</b>

RHSP = Rangkaian Hospital Seberang Perai (A merging hospital which consists of Hospital Seberang Jaya & Hospital Bukit Mertajam, but physically still 2 hospitals)

\* Hospital Kepala Batas commenced its services on 1<sup>st</sup> Jan 2003

Source: Penang State Health Department, series of Penang Health Information and from unpublished sources

**Penang: HIV/AIDS (Total Identified Cases), 1999-2004**

	1999	2000	2001	2002	2003	2004 (Jan - June)
HIV	225	194	215	268	266	166
AIDS	105(55)	70(52)	69(34)	88(45)	49(20)	26(16)

Note: ( ) = deaths

Source: Penang State Health Department

**Penang: 10 Main Causes of Hospital Deaths (Government), 2003**

Ranking	Main Causes of Death	Total Deaths	% of Deaths to Total Hospital Deaths
1	Septicaemia	427	17.63%
2	Cerebro-Vascular Diseases	281	11.60%
3	Ischaemic Heart Diseases	266	10.98%
4	Malignant Neoplasm	251	10.36%
5	Transport Accidents	187	7.72%
6	Pneumonia	173	7.14%
7	Diseases of Pulmonary Circulation and other form of Heart Diseases	123	5.08%
8	Diseases of the Digestive System	107	4.42%
9	Renal Failure	78	3.22%
10	Certain Conditions Originating in the Perinatal Period	73	3.01%
	<b>Other Diseases</b>	456	18.83%
	<b>Total Deaths</b>	2,422	100%

Source: Penang State Health Department

## SELECTED NATIONAL STATISTICS

### Malaysia: Gross Domestic Product by Sector (Current Prices & 1987 Prices)

Component	RM Million					
	Q1/03	Q2/03	Q3/03	Q4/03	Q1/04	Q2/04
National Accounts (GDP) at Current Prices	93,712	95,474	100,010	105,004	103,583	109,586
Agriculture, Forestry and Fishing	8,503	9,305	9,931	10,484	9,847	10,916
Mining and Quarrying	10,841	9,616	9,835	10,666	11,864	12,223
Manufacturing	28,450	29,849	31,144	32,977	32,707	35,451
Electricity, Gas and Water	3,091	3,254	3,307	3,259	3,362	3,540
Construction	3,440	3,846	3,840	3,784	3,511	3,837
Wholesale and Retail Trade, Hotel and Restaurants	12,793	12,190	13,341	14,280	13,844	14,037
Transport, storage and Communication	6,363	6,498	6,951	6,976	6,980	7,243
Finance, Insurance, real estate and business services	11,271	11,583	11,785	12,246	11,947	12,533
Other Services	6,417	6,440	6,681	6,824	6,800	6,905
Government Services	6,965	7,375	7,463	7,840	7,231	7,586
Less : Imputed bank service charges	5,956	5,996	5,967	5,972	5,906	6,379
Plus : import duties	1,534	1,514	1,699	1,638	1,396	1,696
National Accounts (GDP) at 1987 Prices	54,541	56,869	59,321	60,944	58,705	61,425
Agriculture, Forestry and Fishing	4,527	5,065	5,444	5,087	4,672	5,228
Mining and Quarrying	4,118	4,137	4,081	4,364	4,358	4,184
Manufacturing	16,384	17,599	18,334	18,996	18,460	19,719
Electricity, Gas and Water	2,300	2,421	2,457	2,423	2,501	2,635
Construction	1,712	1,914	1,909	1,882	1,722	1,881
Wholesale and Retail Trade, Hotel and Restaurants	8,059	7,778	8,450	8,922	8,529	8,560
Transport, storage and Communication	4,778	4,909	5,174	5,156	5,151	5,324
Finance, Insurance, real estate and business services	8,311	8,736	8,875	9,122	8,905	9,355
Other Services	4,528	4,532	4,696	4,804	4,757	4,823
Government Services	4,028	4,265	4,297	4,514	4,155	4,359
Less : Imputed bank service charges	5,453	5,721	5,779	5,641	5,605	5,962
Plus : import duties	1,251	1,235	1,383	1,315	1,101	1,319

Source: Bank Negara Malaysia

Note: Data is subject to adjustments and revisions by Bank Negara Malaysia

### Malaysia: Exchange Rates

Period	USD	GBP	EUR	AUD	JPY100	SGD
Q1/2003	3.8000	6.0909	4.0764	2.2539	3.1969	2.1783
Q2/2003	3.8000	6.1513	4.3165	2.4275	3.2054	2.1730
Q3/2003	3.8000	6.1210	4.2778	2.5022	3.2336	2.1696
Q4/2003	3.8000	6.4815	4.5227	2.7198	3.4925	2.2042
Q1/2004	3.8000	6.9845	4.7469	2.9052	3.5415	2.2417
Q2/2004	3.8000	6.8733	4.5782	2.7157	3.4696	2.2330
Q3/2004	3.8000	6.9120	4.6467	3.4571	2.6956	2.2260

Source: Bank Negara Malaysia

Currency	2002	2003	January - July		% Change
			2003	2004	
Per Unit					
US dollar	3.8000	3.8000	3.8000	3.8000	0
Pound Sterling	5.7108	6.2106	6.1299	6.9416	-11.7
Singapore Dollar	2.1227	2.1814	2.1744	2.2350	-2.7
Euro	3.5919	4.2990	4.2179	4.6668	-9.6
Per 100 Units					
Japanese Yen	3.0384	3.2824	3.2017	3.5017	-8.6
Thai Baht	8.8399	9.1578	8.9609	9.5267	-5.9
Philippine Peso	7.3682	7.0112	7.0987	6.7912	4.5
Indonesia Rupiah	0.0409	0.0444	0.0440	0.0433	1.6
Saudi Arabian Riyal	101.3254	101.3287	101.3301	101.4701	-0.1

Source: The Malaysian Economy in Brief, August 2004, Department of Statistics, Malaysia

**Malaysia: National Indices & Employment Data**

	Unit Description	Latest Period	Latest Data	Previous Period
Industrial Production Index	1993=100	JuI04	235.2	220.0
Employment	(million persons)	Q2/2004	10.017	9.920
Employment	% of labour force	Q2/2004	96.3	96.2
Unemployment	(million persons)	Q2/2004	0.386	0.387
Unemployment	% of labour force	Q2/2004	3.7	3.8
Average salaries and wages per employee in manufacturing sector	RM per month	JuI04	1,654.5	1,658.0
Consumer Price Index	2000=100	Aug-04	105.8	105.8
Producer Price Index	1989=100	Aug-04	152.7	148.6

Source: Bank Negara Malaysia

**Malaysia: Federal Government Accounts**

Component	RM Million		
	2001	2002	2003
Public Sector Operations			
General Government			
Revenue	91,633	96,763	107,055
Operating Expenditure	72,299	75,450	84,163
Current Account	19,334	21,313	22,892
NPFE's Operating Surplus	39,484	45,324	55,651
Public Sector Current Account	58,818	66,637	78,543
Net Development Expenditure	59,724	69,125	83,515
Public Sector Overall Balance	-906	-2,488	-4,772
Domestic Financing			
Bank	-25,834	-13,139	-8,524
Non-Bank	20,129	8,440	23,671
Foreign Borrowing	6,611	7,187	-10,375

Source: Bank Negara Malaysia

**Malaysia: Producer Price Index**

Section	Weights	January-July Average				
		2003	Jul 2004	2003	2004	% Change
Food & Live Animals Chiefly for Food	14.88	131.2	135.5	130.4	135.8	4.1
Beverages and Tobacco	2.08	164.8	166.2	164.4	166.7	1.4
Crude Materials, Inedible Except Fuels	17.96	124.8	132.4	122.7	133.5	8.8
Mineral Fuel / Lubricants & Related Materials	18.82	178.0	215.2	176.7	202.3	14.5
Animal & Vegetable Oils & Fats	8.47	179.0	188.1	173.8	212.3	22.2
Chemicals & Related Products N.E.S.	4.42	119.5	125.3	119.5	123.5	3.3
Manufactured Goods Classified Chiefly by Material	10.82	122.4	125.6	122.0	124.5	2.0
Machinery & Transport Equipment	18.35	110.1	110.3	110.1	110.2	0.1
Miscellaneous Manufactured Articles	3.61	128.7	129.4	128.3	129.5	0.9
Commodities & Transactions N.E.C. in the S.I.T.C.	0.59	129.9	130.1	129.9	130.1	0.2
Total	100.00	138.2	148.6	136.9	148.3	8.3

Source: The Malaysian Economy in Brief, August 2004, Department of Statistics, Malaysia



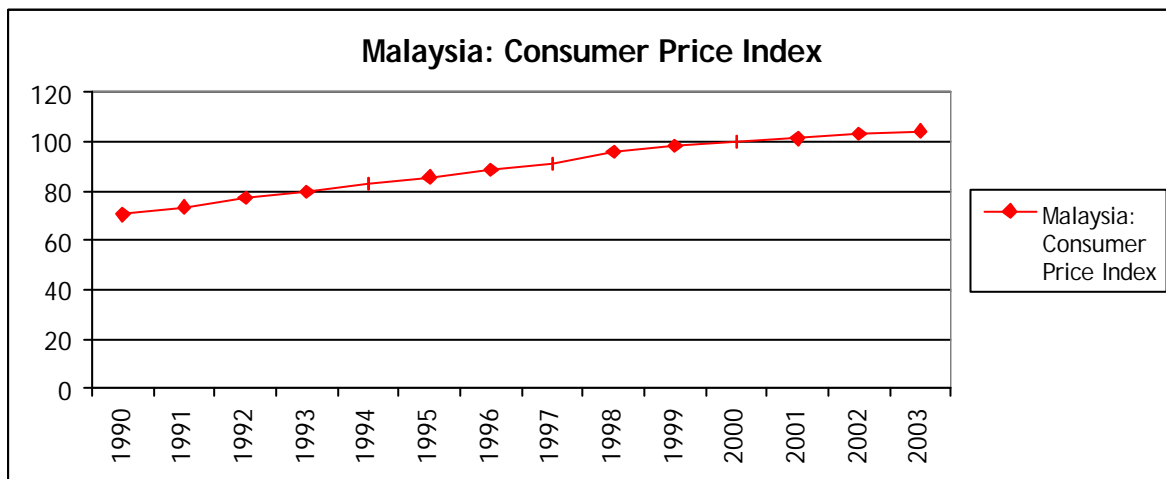
**Malaysia: Consumer Price Index**

2000 = 100

Period	All Groups	Food	Beverages & Tobacco	Clothing & Footwear	Gross Rent, Fuel & Power	Furniture, Furnishings & Household Equipment & Operation	Medical Care & Health Expenses	Transport & Communication	recreation, Entertainment, Education & Cultural Services	Miscellaneous Goods & Services
1990	70.6	62.0	73.3	96.0	74.6	82.7	68.3	78.2	82.7	73.3
1991	73.6	65.0	75.9	102.0	76.9	86.4	71.9	81.5	84.9	75.9
1992	77.1	69.2	77.6	105.0	79.7	88.7	74.4	85.1	87.4	77.6
1993	79.9	70.8	79.7	105.5	82.5	89.9	78.2	89.9	87.8	79.7
1994	82.8	74.6	81.6	104.7	84.5	91.3	80.9	94.0	88.3	81.6
1995	85.7	78.2	85.1	104.7	87.3	93.8	83.4	95.7	90.6	85.1
1996	88.7	82.7	87.2	103.9	90.1	94.9	86.4	97.0	93.6	87.2
1997	91.0	86.1	91.2	103.4	93.0	95.0	89.6	97.6	94.0	91.2
1998	95.8	93.8	97.6	103.9	97.0	98.7	95.1	97.5	97.0	97.6
1999	98.5	98.1	99.1	101.8	98.6	100.0	98.0	98.0	99.4	99.1
2000	100.0	100.0	100.0	100.0	100.0	100.0	100.0	100.0	100.0	100.0
2001	101.4	100.7	104.8	97.4	101.4	100.1	102.9	103.6	99.9	100.7
2002	103.2	101.4	109.2	95.2	102.1	99.7	105.4	110.4	100.1	101.8
2003	104.4	102.7	111.0	93.3	103.1	99.1	107.2	112.3	100.7	103.1
2004										
Jan	105.0	104.0	114.6	92.2	103.5	98.9	108.0	112.2	100.8	104.7
Feb	105.1	104.0	114.6	92.7	103.6	99.0	108.1	112.4	100.8	104.6
Mar	105.0	103.7	114.7	91.6	103.6	99.2	108.1	112.4	100.6	104.5
Apr	105.2	104.0	114.7	92.3	103.6	99.6	108.3	112.4	100.7	104.9
May	105.5	104.6	114.8	91.6	104.0	99.6	108.5	112.9	100.7	104.6
June	105.6	104.9	114.8	91.6	104.0	99.7	108.6	112.9	100.6	104.5
Jul	105.8	105.2	114.9	91.7	104.0	99.7	108.8	112.9	100.6	104.8
Aug	105.8	105.3	115.0	90.9	104.2	99.6	108.8	113.0	100.5	104.8

Note: Data from 1981 - 1990 refers to Consumer Price Index (1980=100) for Malaysia, and data from 1991 - 1997 refers to CPI (1994=100) for Malaysia. Data from 1998 refers to CPI (2000=100) for Malaysia.

Source: Department of Statistics, Malaysia



Source: Department of Statistics, Malaysia

## Malaysia: Index of Industrial Production

1993=100

Period	All Divisions	Mining	Electricity	Manufacturing	Export-Oriented Industries	Domestic-oriented Industries
Weight	100.0	22.15	7.44	70.41	73.2	26.8
1996	141.1	119.4	146.5	147.3	146.1	150.4
1997	156.1	122.3	167.3	165.6	165.2	166.8
1998	144.9	123.6	173.0	148.6	156.7	126.3
1999	158.0	119.7	179.7	167.8	177.6	141.2
2000	188.3	119.4	190.7	209.7	223.3	172.1
2001	180.4	122.7	207.1	195.8	200.1	184.1
2002	188.8	124.9	228.5	204.7	210.2	190.4
2003	206.3	131.6	241.7	226.1	235.3	202.0
2003						
Q1	192.2	130.3	230.9	207.5	213.5	191.9
Q2	201.9	130.7	244.4	219.8	226.4	203.0
Q3	211.4	128.5	246.9	233.7	243.6	207.9
Q4	219.8	136.8	244.5	243.3	257.5	205.2
2004						
Jan	217.3	145.0	250.2	236.5	249.1	201.8
Feb	216.9	129.7	231.3	242.8	256.7	204.7
Mar	224.6	142.4	265.1	246.2	258.4	212.7
Apr	229.2	135.3	264.1	255.0	268.2	218.7
May	237.1	139.0	270.0	264.4	278.9	225.7
June	220.0	129.7	266.4	243.6	255.7	210.1
Jul	235.2	135.2	268.6	263.1	275.8	228.5

Period	Export-Oriented Industries									
	Total	Electronic & Electrical	Of which		Textiles & Wearing Apparel	Wood & Wood Products	Chemicals & Chemical Products	Rubber Products	Oil-Estate Processing	Others
			Electronics	Electricals						
2003										
Q1	213.5	246.3	315.3	138.2	106.6	94.4	261.5	191.8	202.0	107.0
Q2	226.4	259.8	330.3	149.6	110.3	98.3	267.2	204.9	249.8	121.8
Q3	243.6	273.6	352.7	150.0	111.4	103.4	298.4	238.9	271.0	127.6
Q4	257.5	307.0	407.0	150.5	107.8	101.9	308.2	235.9	239.3	127.2
2004										
Jan	249.1	295.7	406.7	122.0	102.5	112.4	305.3	230.5	201.7	128.6
Feb	256.7	309.3	422.8	131.9	93.5	104.3	310.8	243.6	213.7	129.1
Mar	258.4	319.6	439.4	132.3	89.1	105.7	300.9	240.1	210.5	121.5
Apr	268.2	317.8	437.4	130.6	107.3	121.5	322.7	254.2	232.7	142.2
May	278.9	337.1	456.7	150.1	104.5	122.6	326.7	258.0	247.2	135.3
June	255.7	310.5	423.7	133.5	93.3	112.7	298.3	232.7	225.1	132.1
Jul	275.8	330.0	444.5	151.0	105.9	123.0	317.2	258.9	266.4	153.3

Period	Domestic-Oriented Industries									
	Total	Non-metallic Mineral Products	Basic Metals	Transport Equipment	Food Manufacturing	Fabricated Metal Products	Paper Products	Tobacco Products	Beverages	Petroleum Products
2003										
Q1	191.9	186.3	201.3	236.7	173.8	190.1	184.9	156.9	145.6	193.6
Q2	203.0	205.8	204.3	232.3	176.5	233.8	183.8	151.6	129.2	200.7
Q3	207.9	201.7	210.8	255.9	188.6	211.6	229.1	168.6	143.7	190.6
Q4	205.2	196.0	210.6	227.1	193.1	230.8	206.7	137.9	170.5	194.0
2004										
Jan	201.8	180.7	207.9	231.4	176.9	243.8	185.2	166.2	175.6	191.2
Feb	204.7	187.0	219.2	232.7	190.6	241.9	187.8	157.1	118.7	189.9
Mar	212.7	184.9	214.0	251.7	192.2	286.5	178.1	153.2	115.9	188.5
Apr	218.7	192.9	229.9	260.1	201.3	284.7	192.2	167.4	113.1	165.3
May	225.7	192.7	232.2	251.9	191.7	307.4	228.8	161.8	111.8	209.3
June	210.1	178.6	206.3	254.3	176.9	276.7	194.3	171.9	144.4	197.0
Jul	228.5	194.4	220.0	282.6	190.6	298.1	210.8	191.8	146.0	224.5

Source: Department of Statistics, Malaysia